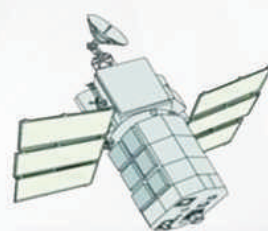


Vehicle Tracking System

Features

- ◆ Real Time Position Tracking
- ◆ Historical Path Diagram
- ◆ Annual / Monthly / Daily Report
- ◆ Remotely I/O Monitoring
- ◆ Mileage Report



GPS



GSM/GPRS

RTU Center



Management Center



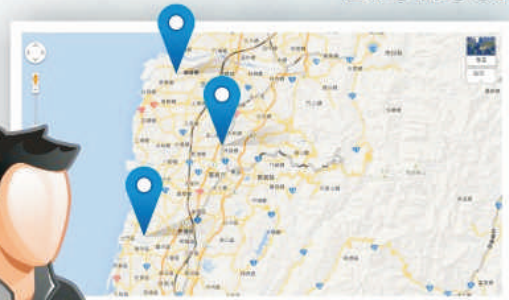
Database



GT-540P



Browser



Users



GPS Vehicle Tracking Architecture

This system uses the GPS to locate, and send vehicle information and coordinates back to control center via GPRS.

It also provides the server-side program and the management interface, and user could use the web page to manage the vehicles.



ICP DAS CO., LTD.

TEL : 07-215-7688 FAX : 07-216-2602 email : sales2@icpdas.com

<http://www.icpdas.com>