

ICP DAS

WF-2572/WF-2572 M FAQ

FAQ Version 1.20

ICP DAS Co., Ltd.

2020-11-27

Table of Contents

Q1: How can I get the MAC of device by the WF-2572/WF-2572M utility?.....	3
Q2: How to choose suitable Wi-Fi channel?	3
Q3: How to restore factory settings?	4
Q4: Does the SSID support languages other than English?.....	4

Q1: How can I get the MAC of device by the WF-2572/WF-2572M utility?

A1: If user didn't know device's MAC address, the utility can use for searching device MAC. The user can use the "Get MAC" button for searching device mac. The following step show that how to get device MAC from utility.

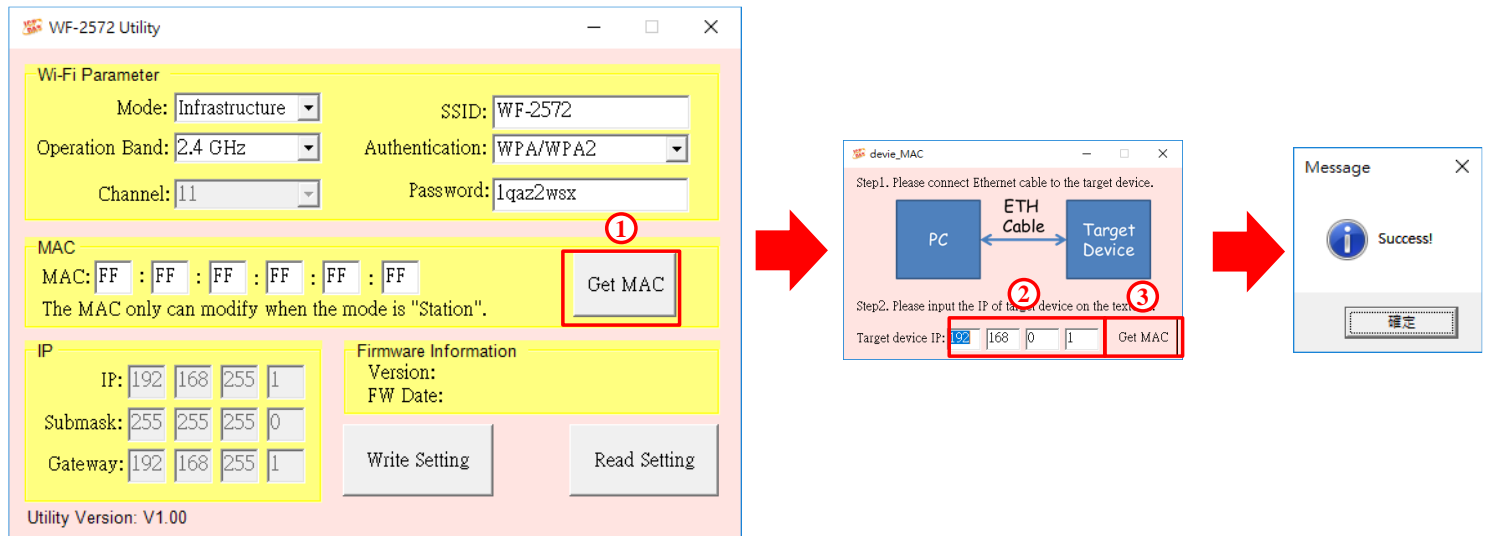
Step1. Please connect the Ethernet cable between PC and device.

Step2. Please fill in the IP address of the device.

Step3. The utility will display the device MAC address after clicking "Get MAC" button.

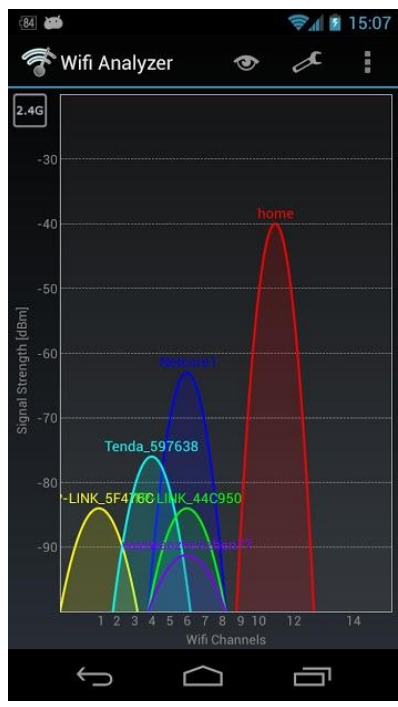
Step4. The utility will appear a successful message when the utility get the MAC from the device.

Note: The PC and device must be in the same IP segment.



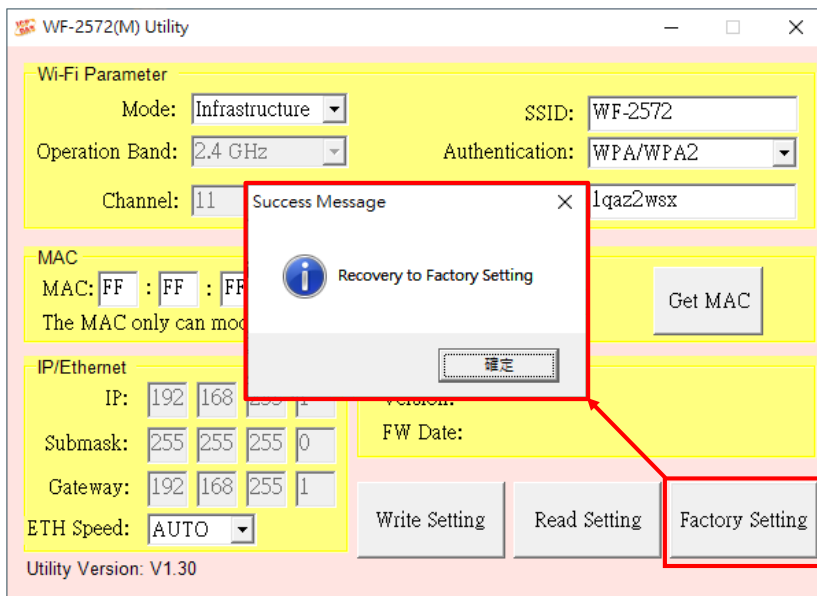
Q2: How to choose suitable Wi-Fi channel?

A2: The APP of Smart phone can scan nearby Wi-Fi AP. The APP store has many Wi-Fi Analyzer. The following figure is one of the Wi-Fi Analyzer. The Wi-Fi channel 4 and 6 has many APs. The channel 4 and 6 has many interferences from other Wi-Fi APs so that it needs to avoid the channel 4 and 6. The 5 GHz is another choice. There has less interferences in 5 GHz.



Q3: How to restore factory settings?

A3: The utility V130 version and above support the function of restoring factory settings. Restoring factory settings is supported for all firmware versions. By pressing the "Factory Setting" button, you can restore the WF-2572(M) to its factory settings.



Q4: Does the SSID support languages other than English?

A4: The SSID supports languages other than English, and the language encoding is UTF-8. The total length of the SSID cannot exceed 31 bytes.

