

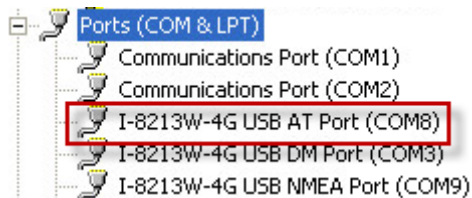
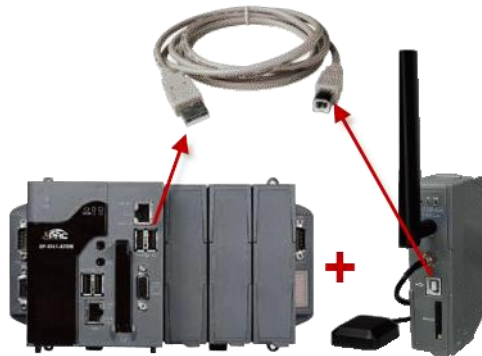
I-8213W-4G FAQ

目錄

Q01 : The Com port opening method seems to be different from the I-8213W-4G. How do I use it?	3
Q02 : Why can't I get GPS related information through NMEA Port?	3

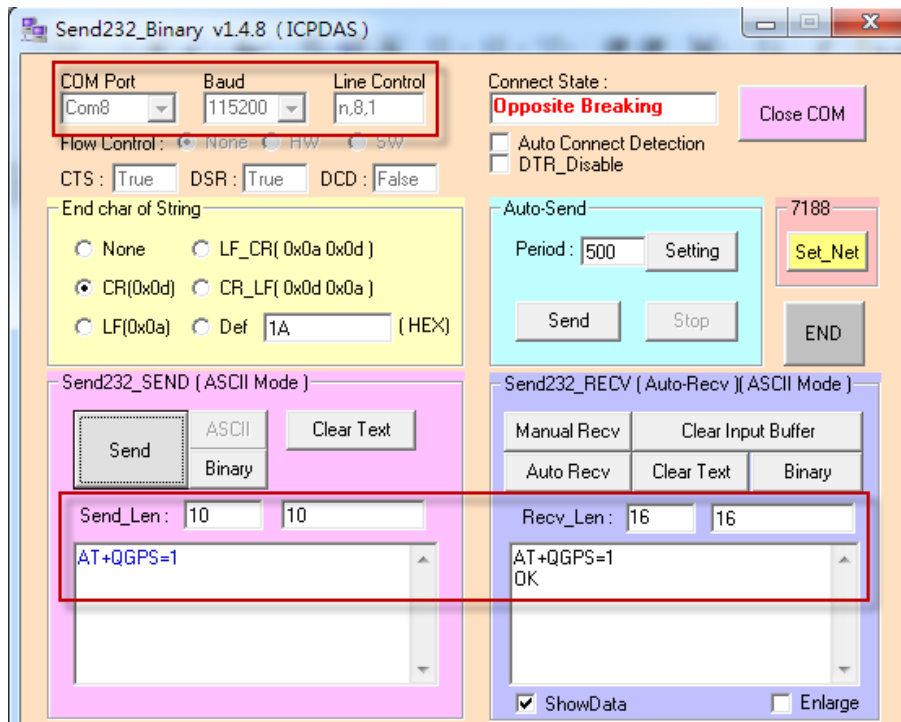
Q01 : The Com port opening method seems to be different from the I-8213W-4G. How do I use it?

A01 : The I-8213W-4G series uses USB as the communication interface, which can greatly increase the communication speed. It is close to the transmission capacity of 4G. Please confirm that the I-8213W-4G USB is connected to the XP-8000, and then from the device administrator. Find the Com port number of the I-8213W-4G USB AT Port in the port and communicate through this Com port.

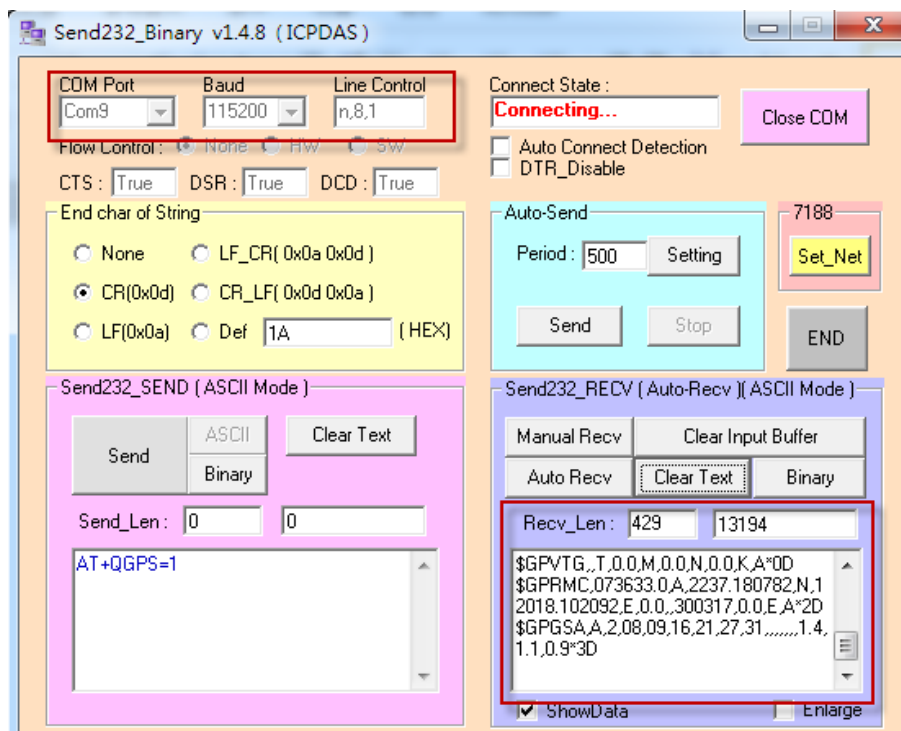


Q02 : Why can't I get GPS related information through NMEA Port?

A02 : The NMEA Port preset does not automatically output the NMEA data. We must first use the AT Port command: AT+QGPS=1, turn on the Query GPS function, read back the OK message sent back from the module in the communication, and then confirm that the GPS antenna has been installed, and then turn on I- 8213W-4G USB NMEA Port, you will receive GPS related information.



NMEA Port will automatically output GPS related information:



Communication via NMEA Port:

