

Classification	General Setting FAQ on EZ Data Logger				No.	1-004-04	
Author	Amber	Version	1.0.0	Date	2012/06/05	Page	1/6

How to set alarm notifies by sending SMS?

Applied to:

<i>Platform</i>	<i>OS Version</i>
<i>PC</i>	<i>Windows 98/NT/2000/XP/Vista</i>

EZ Data Logger support alarm notifies by sending SMS. You can set multi engineers' cell phone number. When the channel value over the alarm value or back to normal, the contact messenger will send a message by SMS(using GSM Modem).

I. Steps to set alarm notifies by sending SMS

Step1 : Connect a **GSM modem** to your COM port.

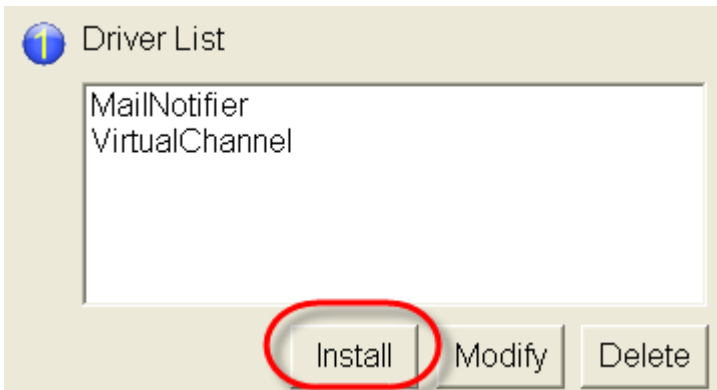
Note: Your GSM modem must support PDU mode.

Step2 : Install the "GSM Modem" driver.

2.1. Open **EZ Data Logger**→ From the button list click **Group Setup** button to open the "Workgroup Setting" form.

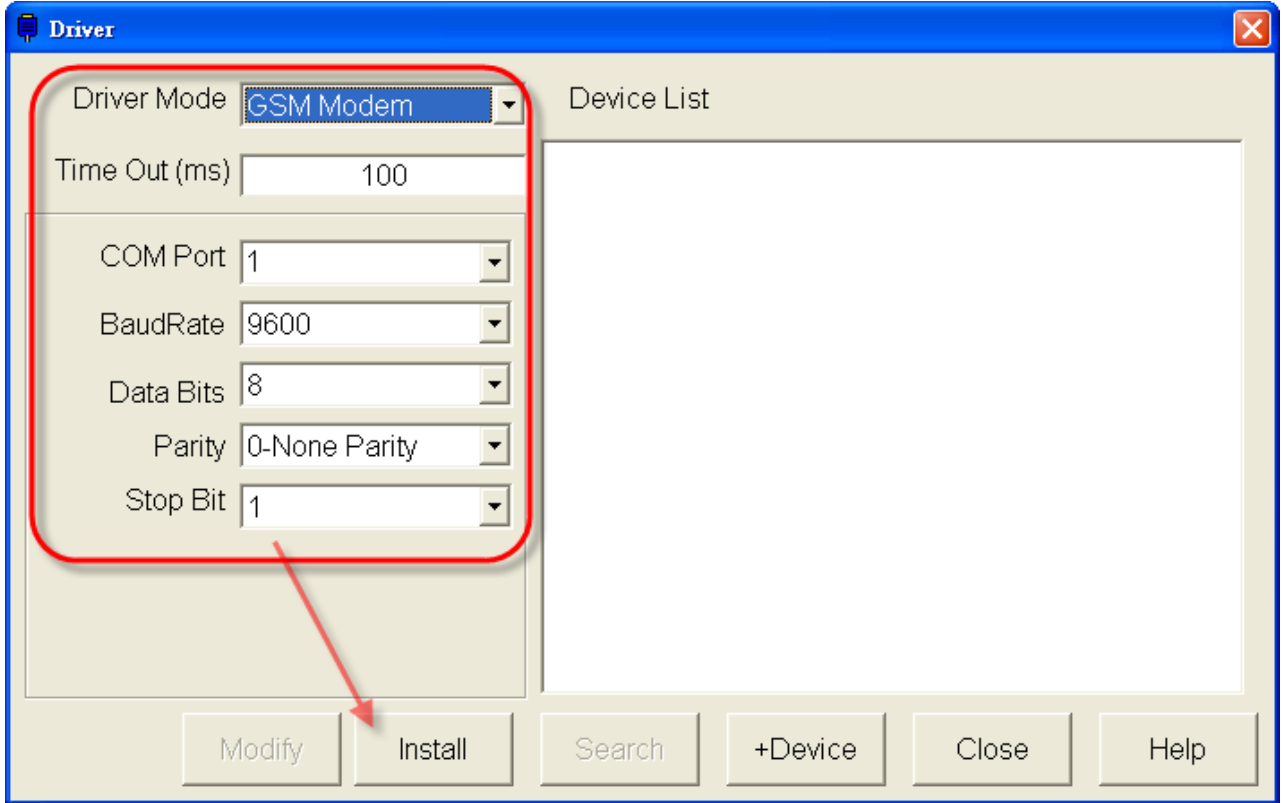


2.2. Click the **Install** button to open Driver setting form.



Classification	General Setting FAQ on EZ Data Logger				No.	1-004-04	
Author	Amber	Version	1.0.0	Date	2012/06/05	Page	2/6

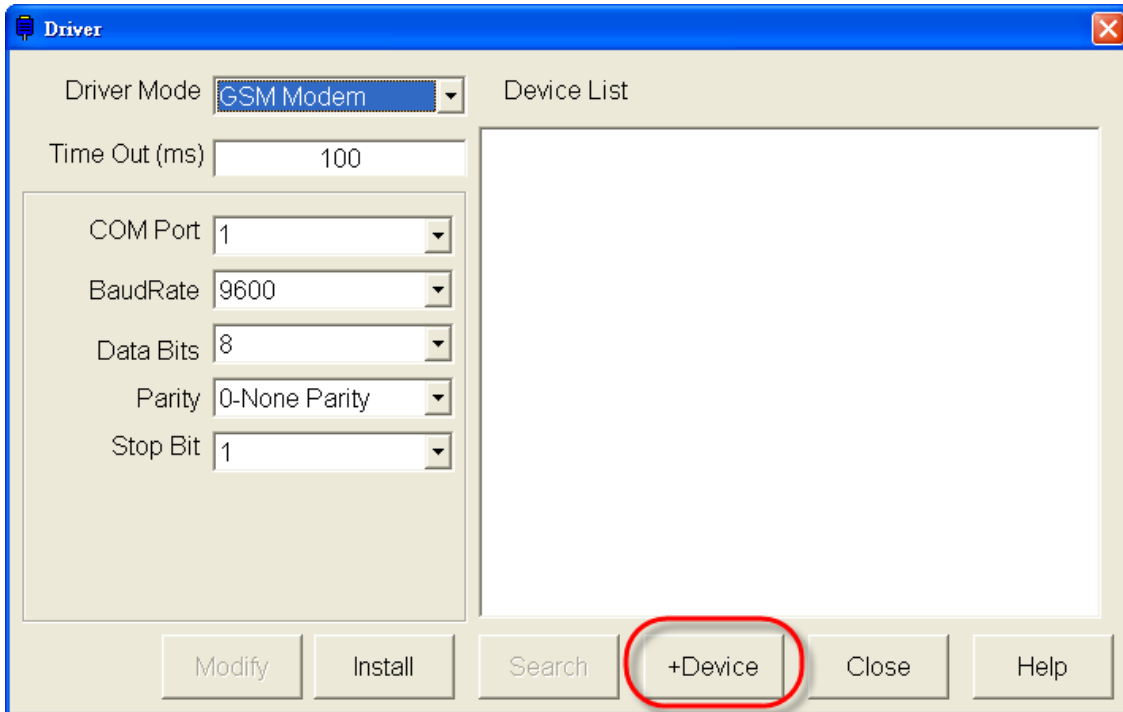
2.3. Select **GSM Modem** driver→ Edit the **COM Port** property→ Click **Install** button.



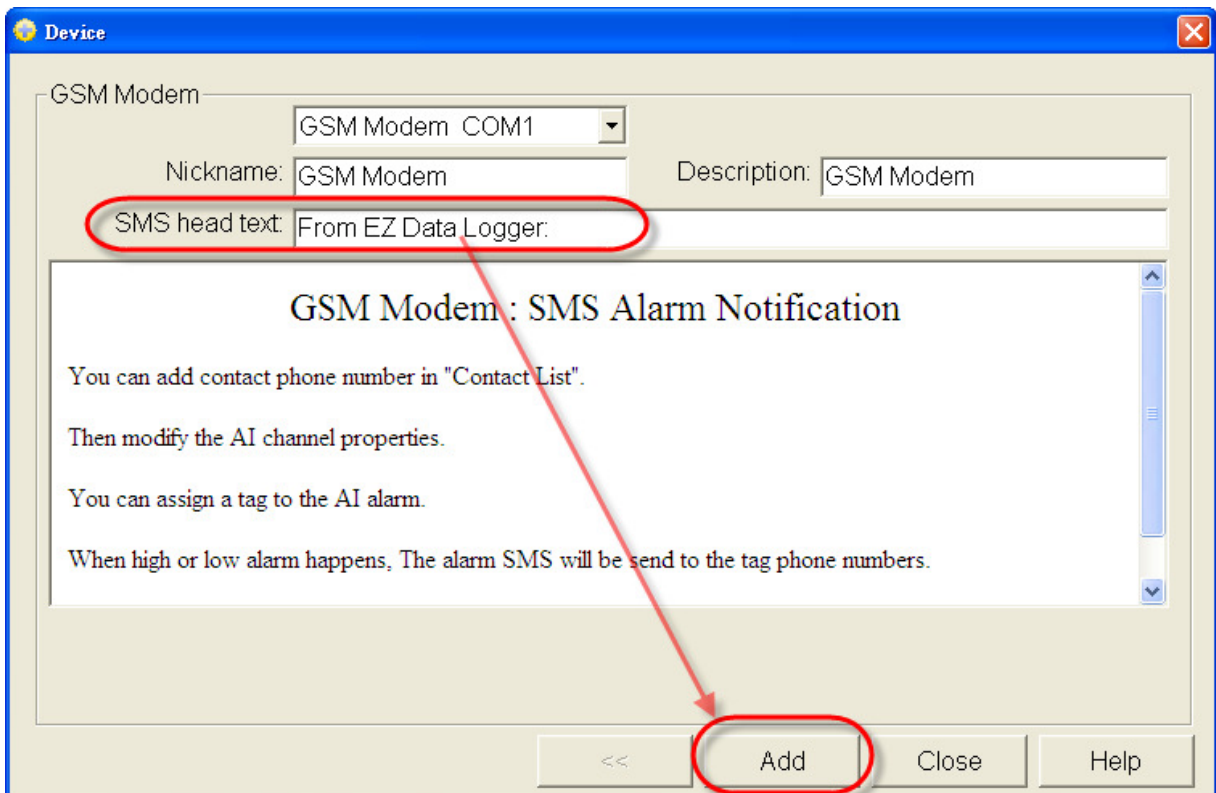
Classification	General Setting FAQ on EZ Data Logger				No.	1-004-04	
Author	Amber	Version	1.0.0	Date	2012/06/05	Page	3/6

Step3 : Add a “GSM Modem” device.

3.1. In the Driver setting form click **+Device** button to open Device setting form.



3.2. Edit the SMS head text, and then click **Add** button.



Classification	General Setting FAQ on EZ Data Logger				No.	1-004-04	
Author	Amber	Version	1.0.0	Date	2012/06/05	Page	4/6

Step4 : Edit the contact list.

Click **Contact List**→ Enter the name 、 title or other identifiable name 、 cell phone number of the receiver→ Click **Add** button.

Channel List

AI List	AO List	DI List	DO List
Counter List	Freq List	Virtual Channel	Control Logic
Contact List	Web Camera		

Name	Tag	Phone Number	E-Mail
Wang	Engineer	1234567890	Wang@hotmail.com

David Engineer 88888888

Modify Delete Add

The new contact list is as below picture ↓

Channel List

AI List	AO List	DI List	DO List
Counter List	Freq List	Virtual Channel	Control Logic
Contact List	Web Camera		

Name	Tag	Phone Number	E-Mail
Wang	Engineer	1234567890	Wang@hotmail.com
David	Engineer	88888888	

You can use the same name with different contacts. When alarm happens, all contacts with the same tag will be notified.

Classification	General Setting FAQ on EZ Data Logger				No.	1-004-04	
Author	Amber	Version	1.0.0	Date	2012/06/05	Page	5/6

Step5 : Set AI channel alarm to notify.

5.1. Select the AI channel, and click **Modify** button.

Channel List

AI List	AO List	DI List	DO List
Counter List	Freq List	Virtual Channel	Control Logic
Contact List	Web Camera		

Nickname	Tag	Location	Gain	Offset	Hight Alarm	Low Alarm	Description
I87019R_AI_0	I87019R_AI_0	I87019R Ch0	1	0	100	-10	I87019R_AI_0
I87019R_AI_1	I87019R_AI_1	I87019R Ch1	1	0	100	-10	I87019R_AI_1
I87019R_AI_2	I87019R_AI_2	I87019R Ch2	1	0	100	-10	I87019R_AI_2
I87019R_AI_3	I87019R_AI_3	I87019R Ch3	1	0	100	-10	I87019R_AI_3
I87019R_AI_4	I87019R_AI_4	I87019R Ch4	1	0	100	-10	I87019R_AI_4
I87019R_AI_5	I87019R_AI_5	I87019R Ch5	1	0	100	-10	I87019R_AI_5
I87019R_AI_6	I87019R_AI_6	I87019R Ch6	1	0	100	-10	I87019R_AI_6
I87019R_AI_7	I87019R_AI_7	I87019R Ch7	1	0	100	-10	I87019R_AI_7

Modify Add>>

5.2. Specify the Tag name to High Alarm and Low Alarm→ Click **Modify** button.

When High Alarm or Low Alarm happens, the warning SMS will be sent to the cell phone number specified by tag name.

Modify Channel

Nickname: I87019R_AI_0
 Tag: I87019R_AI_0
 Description: I87019R_AI_0

Scaling
 Gain: 1
 Offset: 0
 Point1: 0
 Point2: 32767
 AI Value: 0
 Display Value: 10
 Calculate

Alarm
 High Alarm: 100
 Low Alarm: -10
 Contact to: Engineer
 Contact to: None
 None
 Engineer

Component Style
 TextBox
 Angular_Basic.ini
 Angular_Circle_Golden.ini
 Angular_Circle_Green.ini
 Angular_Square_Blue.ini
 Angular_Square_Gray.ini

123.456

Modify Cancel

Classification	General Setting FAQ on EZ Data Logger					No.	1-004-04
Author	Amber	Version	1.0.0	Date	2012/06/05	Page	6/6

II. Mail&SMS Sender

“Mail&SMS Sender” software is used for sending the e-mail and SMS. If the EZ Data Logger project is added “MailNotifier” or “GSM Modem” driver, the software will be automatically executed and minimized to the system icon tray. It’s like the below picture ↓



You can right-click on the icon and select **Main** to show the main form. In the main form you can enable/disable the e-mail/SMS sending.

