

Packing List

Apart from this guide, this package includes following items:



XP-8038-CE6
XP-8138-CE6
XP-8338-CE6
XP-8738-CE6



CF slot with
a CF card



Screwdriver

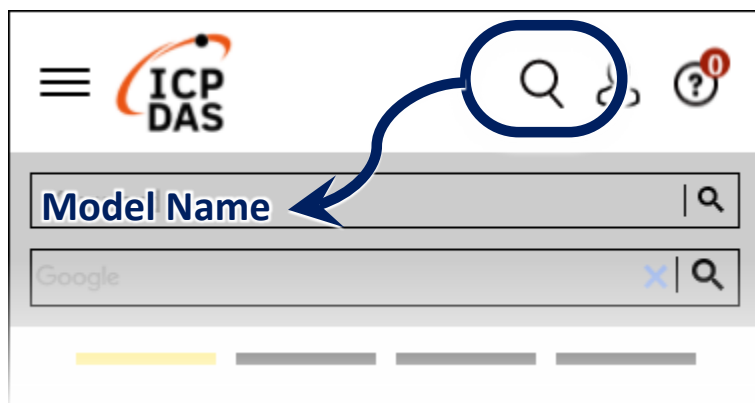
Resources

How to search for drivers, manuals and spec information from ICP DAS website.

- For Desktop Browser



- For Mobile Web



Technical Support

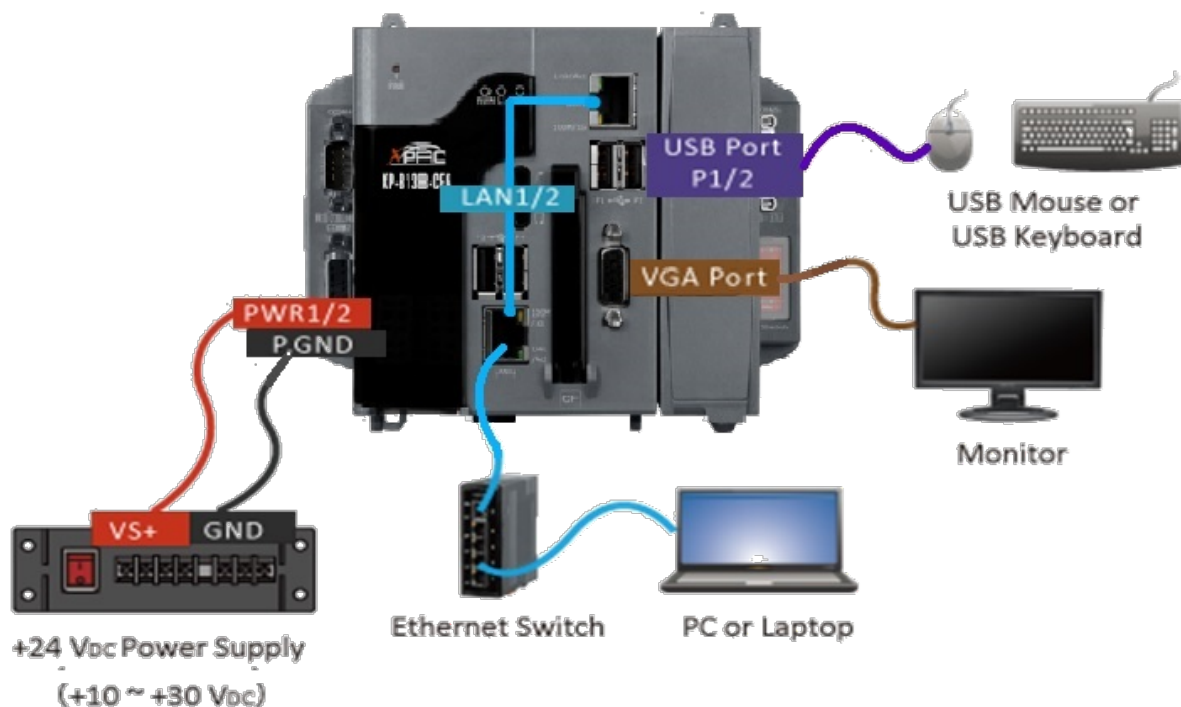
service@icpdas.com
www.icpdas.com

1 Configure the Boot Mode

Before starting the installation, ensure that the rotary switch is set into the “0” position.



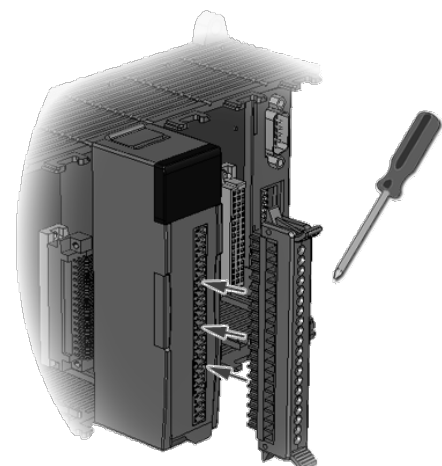
2 Connecting to PC, Monitor and Power Supply



3 Insert the I/O Module and Wiring

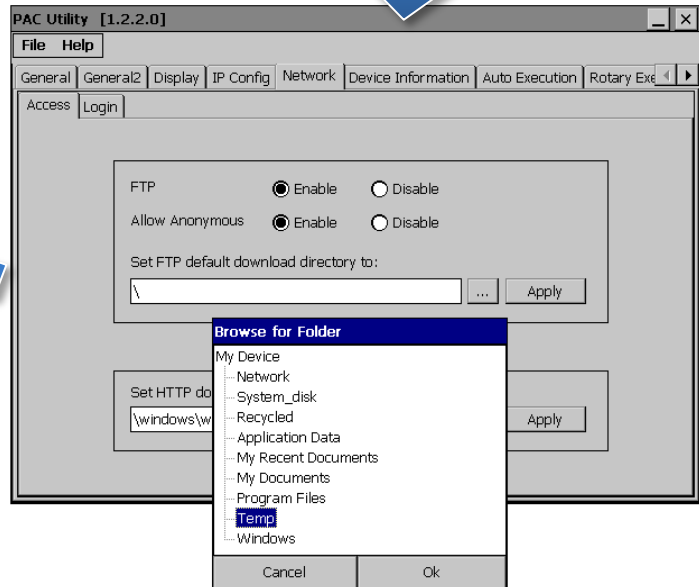
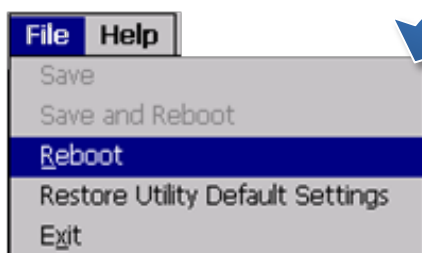
XP-8x38-CE6 with 1/3/7 expand slots support high profile I-8K and I-87K series I/O modules.

For more information about expansion I/O modules, please refer to our website.




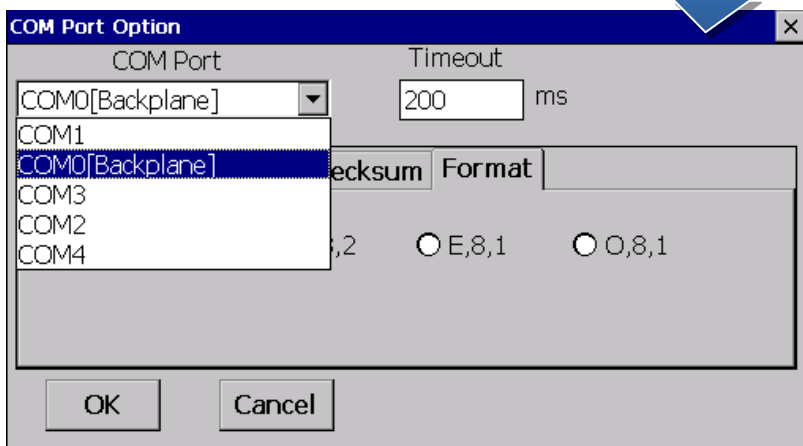
4 Use PAC Utility to Manage the XP-8x38-CE6

- 1) Double-click the shortcut of “PAC Utility” on the desktop.
- 2) Configure IP address (DHCP), FTP Server, auto execution files..., etc.
- 3) Reboot the PAC to save all changes.



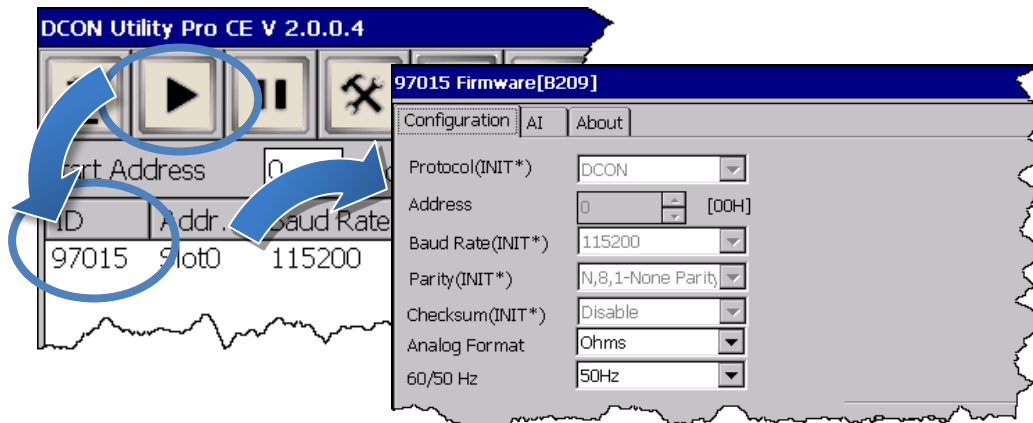
5 Use DCON Utility Pro to Configure I/O Modules

- 1) Double-click the shortcut of “DCON Utility Pro” on the desktop.
- 2) Click the  button.
- 3) Configure the communication settings.



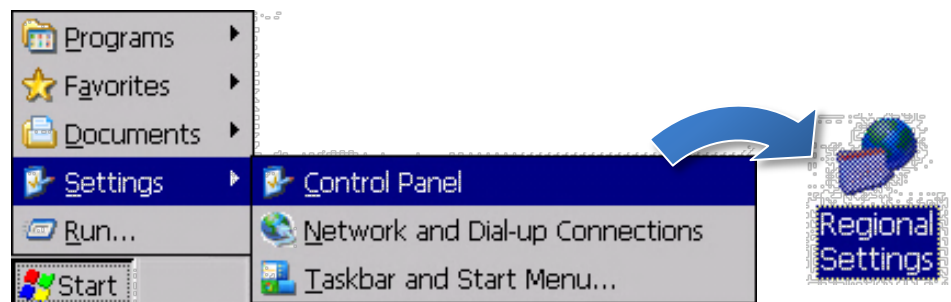
4) Click the  button.

5) Click the module name to configure the I/O module.

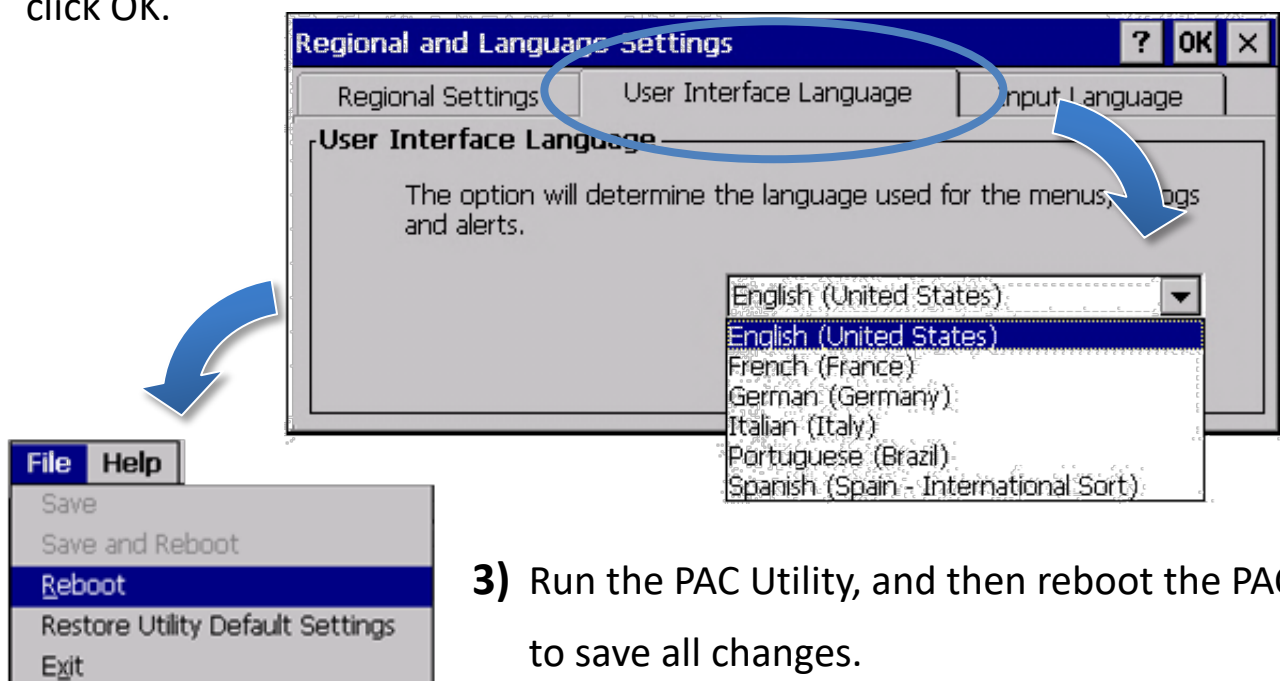


6 Change the Language

1) Select “Start”, choose “Settings”, click “Control Panel”, and then click Regional Settings.



2) Click “User Interface Language” tab, drop down to select the language, and click OK.



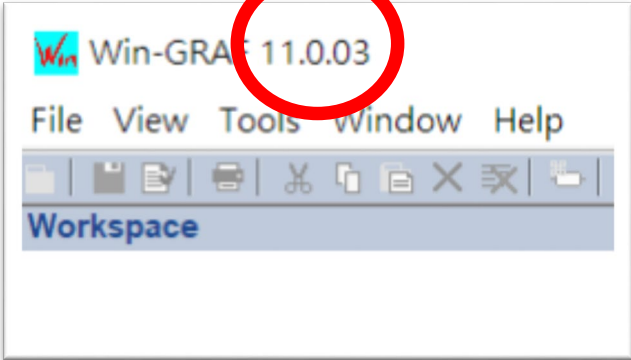
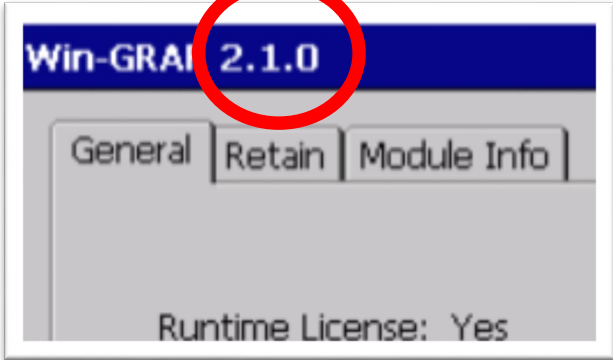
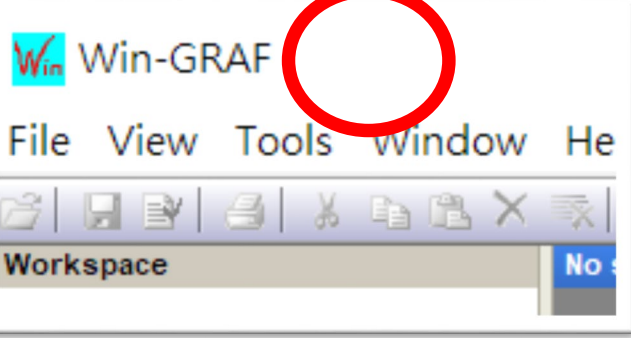
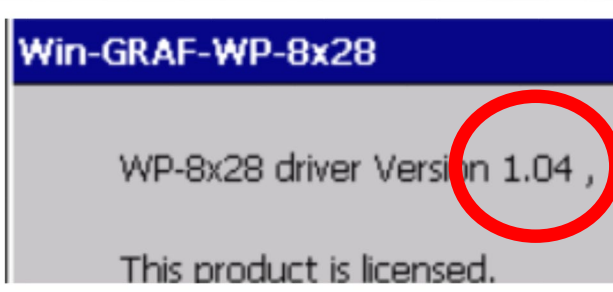
3) Run the PAC Utility, and then reboot the PAC to save all changes.

7 Version Identification

The match version rules for Workbench and Runtime:

- **Workbench 11.0** with **Runtime Ver. 2.xx** (factory default)
- *Workbench 1.08* with *Runtime Ver. 1.xx*


Figure for Version confirmation

| | |
|---|--|
| Workbench 11.0 | Runtime Ver. 2.xx |
|  |  |
| Workbench 1.08 | Runtime Ver. 1.xx |
| ※There's no version number on the top-left window.  |  |

Note: Win-GRAF runtime must be matched with Win-GRAF Workbench V11 (or later)

8 Download the Latest Win-GRAF Workbench V11 Along with the Runtime

Key in “**win-graf**” into Search Box at ICP DAS home page. Find and download Win-GRAF Workbench V11 from the “Software download” Tab.



The screenshot shows the ICP DAS website search results for 'win-graf'. The search bar contains 'win-gr' and the results list 'Module: Win-GRAF' and 'Info: Win-GRAF home page, includes all informa'. A blue arrow points from the search results to the 'Software Download' tab in the navigation menu.

Navigation Menu:

- Win-GRAF Software Introduction
- PAC Features
- Selection Guide
- Comparison of Win-GRAF PACs
- Authorization Instructions
- Software Download**
- Function & Application
- Win-GRAF FAQ

Download Win-GRAF Workbench:

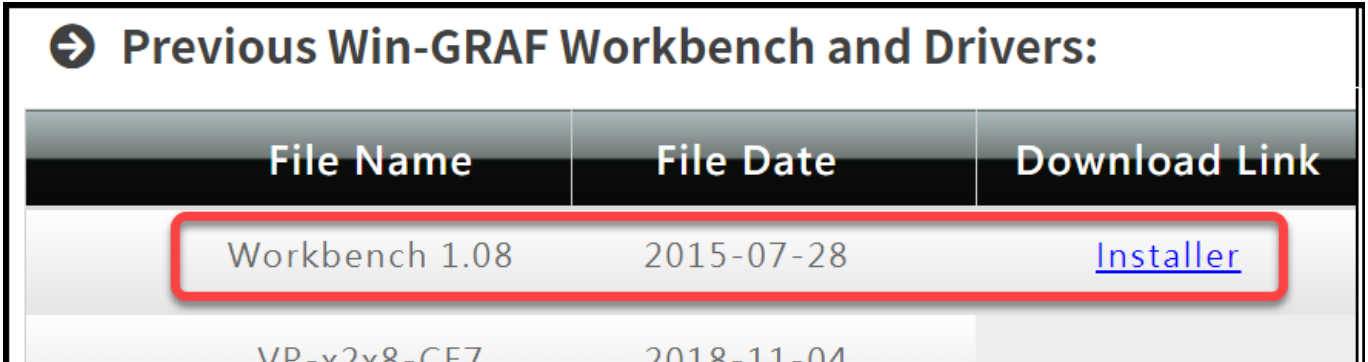
| File Name | Version | File Date | Download Link | Remark |
|-----------------------------|---------|------------|---------------------------|---------------|
| Win-GRAF Workbench Software | 11.0.03 | 2023-01-12 | Installer | Full software |

9 Restore Old Version Win-GRAF Runtime (1.xx)

Win-GRAF runtime (2.xx) does not fully support files compiled by Win-GRAF Workbench version 1.08. If you'd like to restore the old version runtime, please download and restore the runtime of PAC by yourself to **restore it back to the 1.xx version** of Win-GRAF runtime.

The method to restore is as follows:

- 1) Drop down to the end of this Tab and download old version runtime.



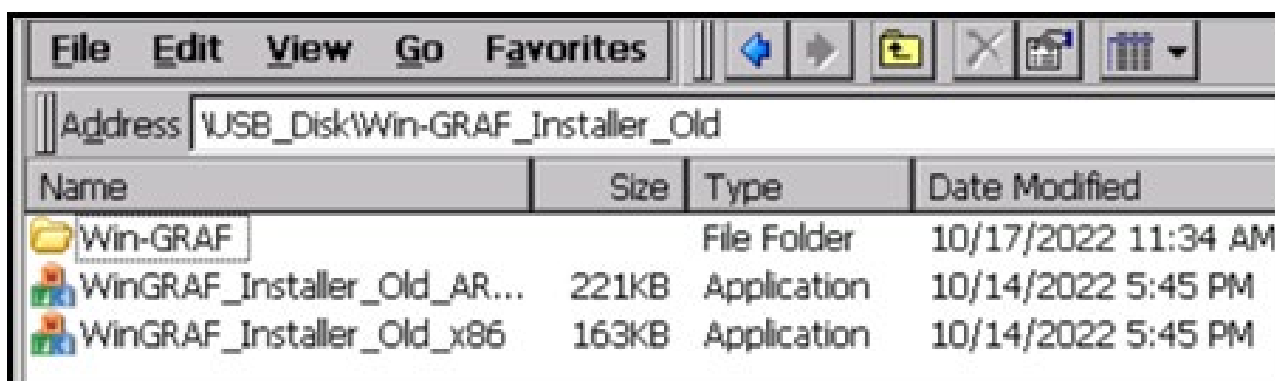
The screenshot shows the 'Previous Win-GRAF Workbench and Drivers' section. It contains a table with columns 'File Name', 'File Date', and 'Download Link'. The first row, 'Workbench 1.08', is highlighted with a red box, and its 'Download Link' is '[Installer](#)'.

| File Name | File Date | Download Link |
|----------------|------------|---------------------------|
| Workbench 1.08 | 2015-07-28 | Installer |
| VP-x2x8-CE7 | 2018-11-04 | |

2) Copy “**Win-GRAF_Installer_Old.Zip**” file into a pen drive or micro SD card, and unzip it.

3) Install the runtime

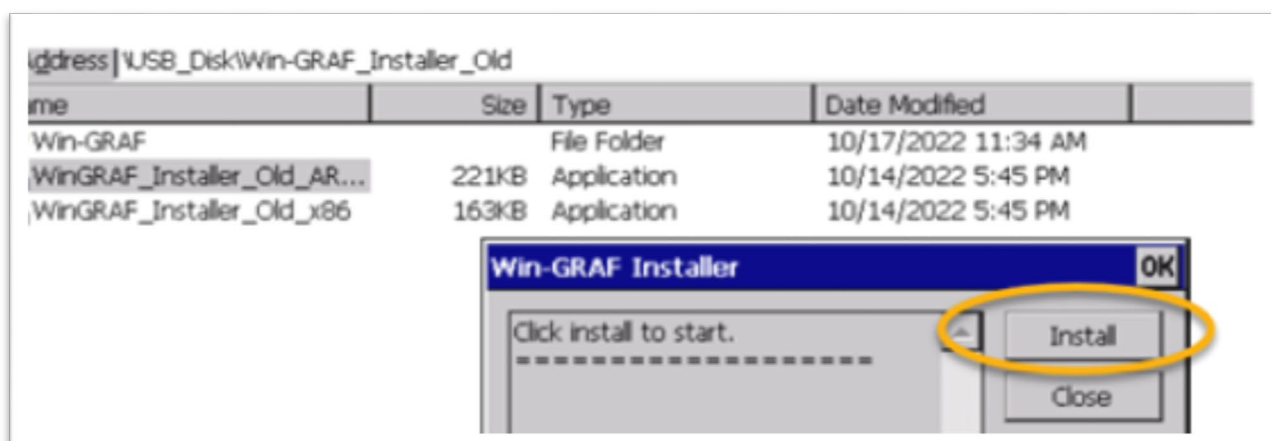
Open the file folder “Win-GRAF_Installer_Old” from pen drive or micro SD card. Capture as below:

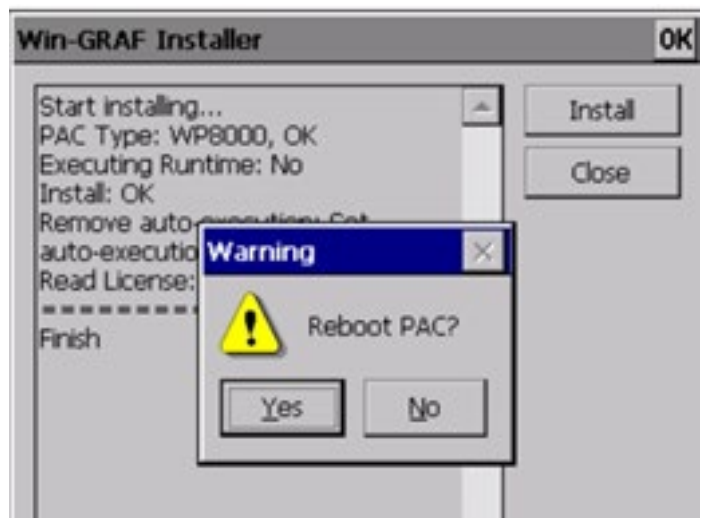
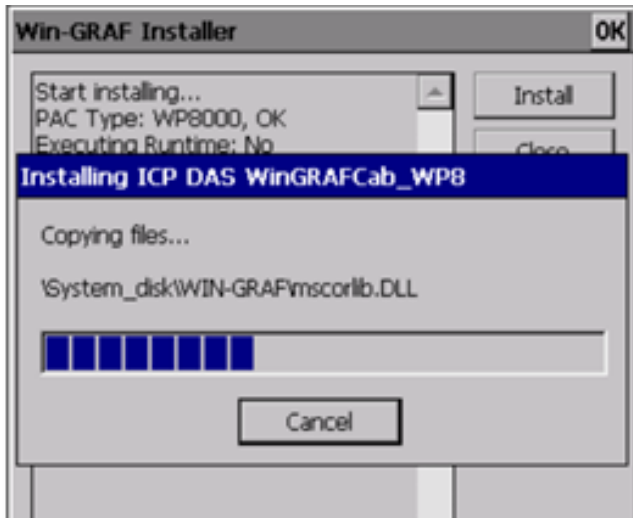


According to different CPUs, different execution files have to be selected:

- **XP-8x38-CE6** PACs: please install “WinGRAF_Installer_Old_**x86**.exe”
- **WP-9xx8-CE7, WP-8x28-CE7, WP-5238-CE7, VP-x2x8-CE7** PACs: please install “WinGRAF_Installer_Old_**ARM**v4l.exe”

After the PAC is successfully updated, reboot the PAC.





10 Ethernet Port (Workbench Port) Settings

Win-GRAF runtime (2.xx) or above version can set the Ethernet port.

Keep it as default **1100**. After setting, click “Set” button and reboot Win-GRAF Runtime to save the changes.

