

Packing List

Apart from this guide, this package includes following items:



WP-9x28-CE7

WP-9228-CE7

WP-9428-CE7

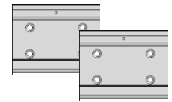
WP-9828-CE7



Screwdriver



microSD card and
microSD/SD adapter



60mm
DIN-Rail Clip*2



M3 x 6L Screw*8



RJ-45
Waterproof Set

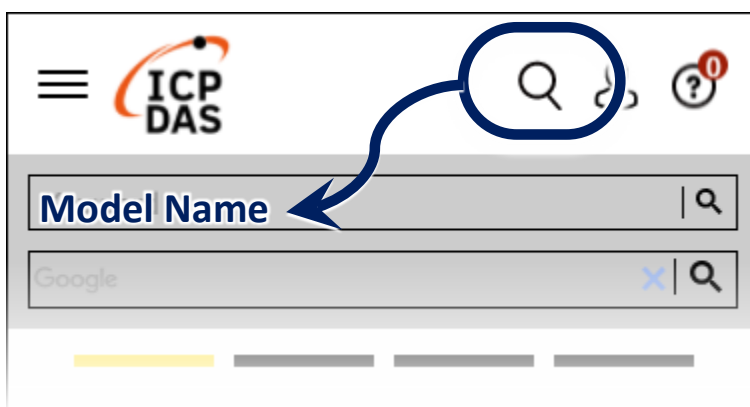
Resources

How to search for drivers, manuals and spec information from ICP DAS website.

• For Desktop Browser



• For Mobile Web



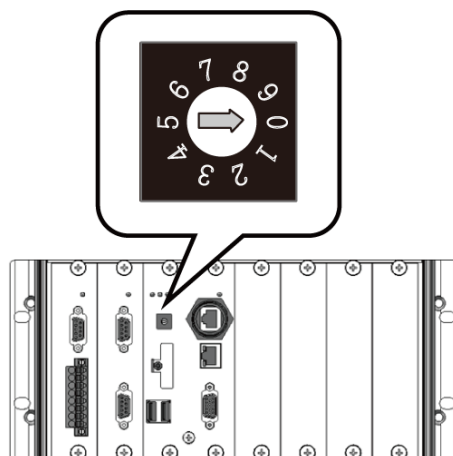
Technical Support

service@icpdas.com

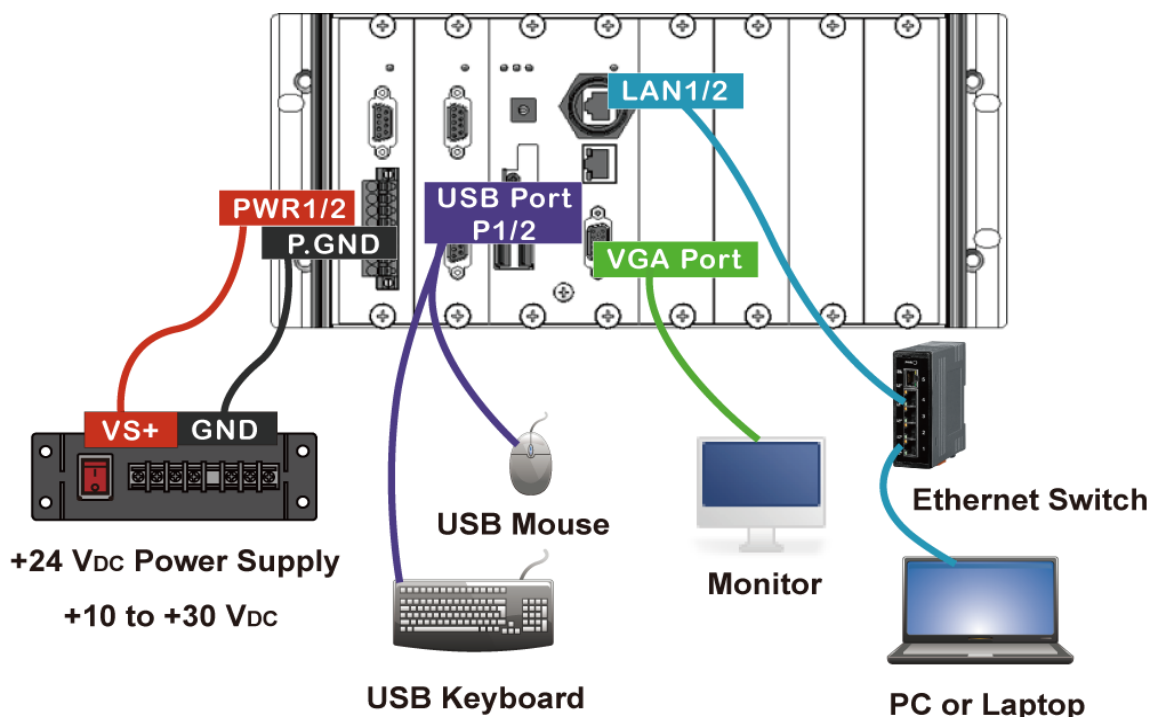
www.icpdas.com

1 Configure the Boot Mode

Before starting the installation, ensure that the rotary switch is set into the “0” position.

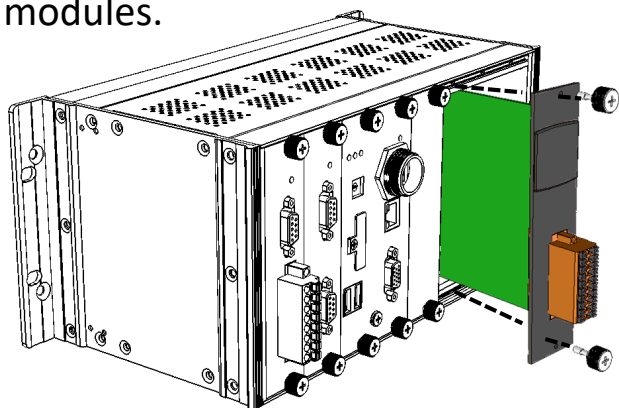


2 Connecting to PC, Monitor and Power Supply



3 Insert the I/O Module and Wiring

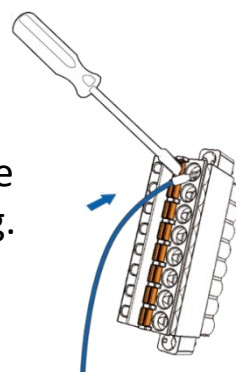
WP-9x28-CE7 with 2/4/8 expand slots support I-9K and I-97K series I/O modules.



Connect/Remove the wiring

1. Use a screwdriver to screw down the orange wire crossbar clip.

2. Insert/remove the I/O wiring.

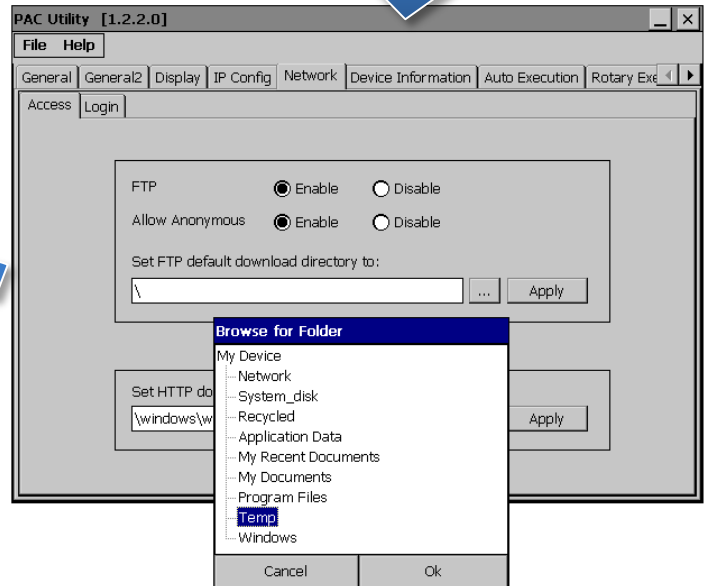
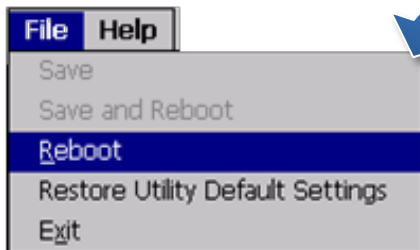


4 Use PAC Utility to Manage the WP-9x28-CE7

1) Double-click the shortcut of “PAC Utility” on the desktop.

2) Configure IP address (DHCP), FTP server, auto execution files..., etc.

3) Reboot the PAC to save all changes.

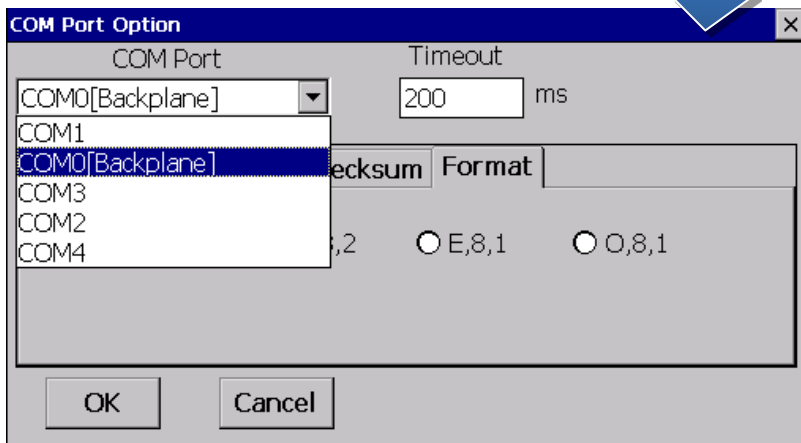


5 Use DCON Utility Pro to Configure I/O Modules

1) Double-click the shortcut of “DCON Utility Pro” on the desktop.

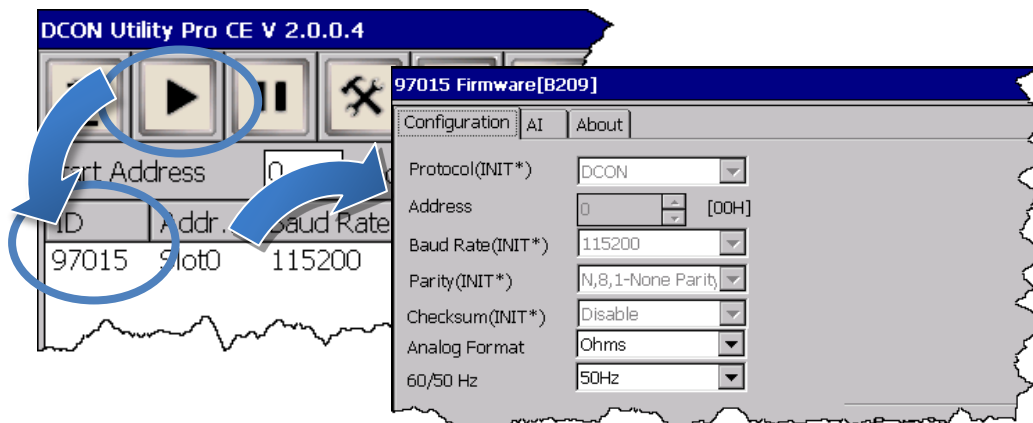
2) Click the  button.

3) Configure the communication settings.



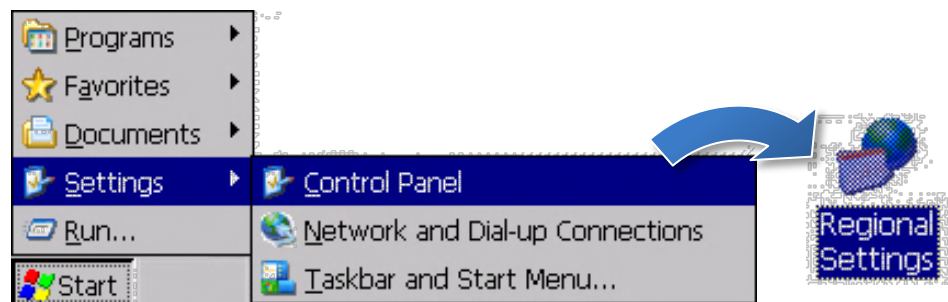
4) Click the  button.

5) Click the module name to configure the I/O module settings.

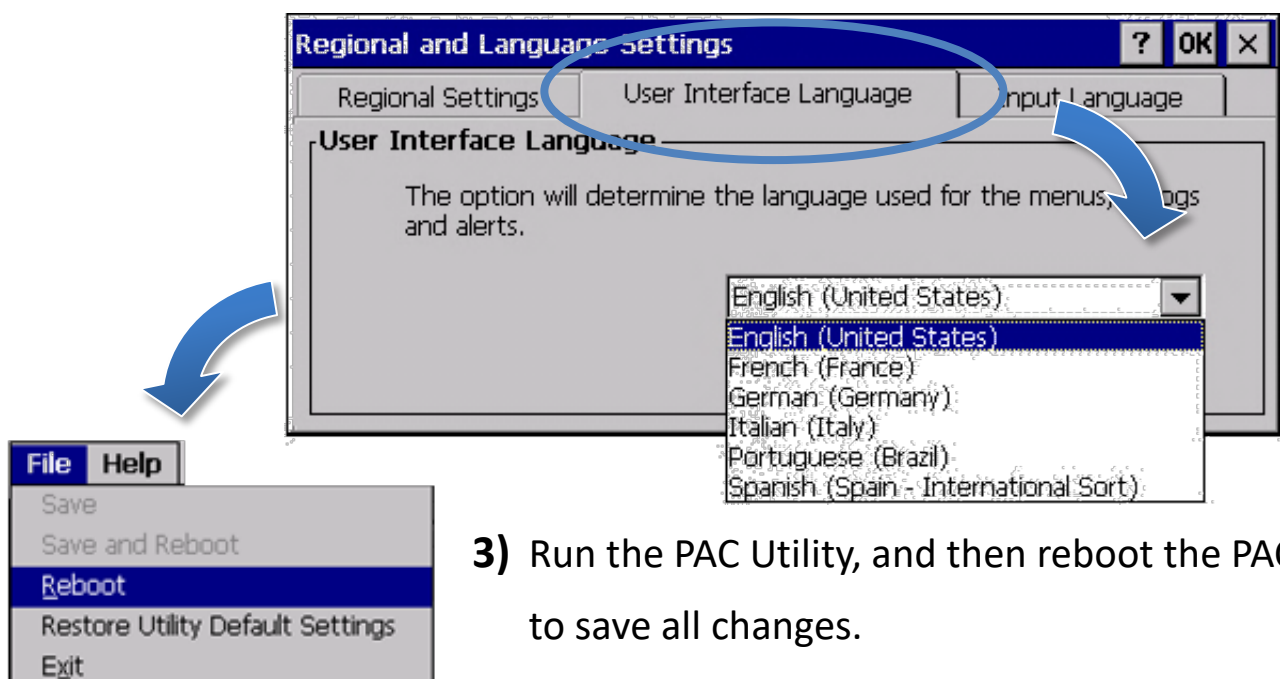


6 Change the Language

1) Select “Start”, choose “Settings”, click “Control Panel”, and then click Regional Settings.



2) Click “User Interface Language” tab, drop down to select the language, and click OK.



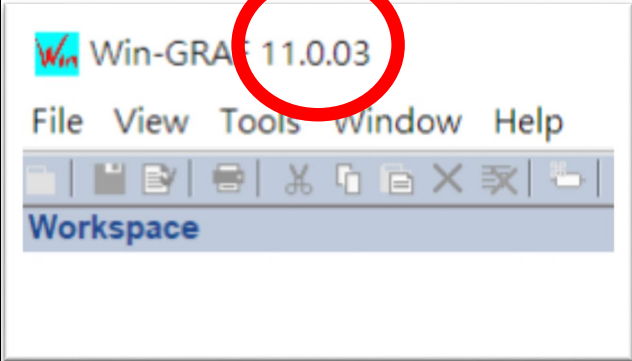
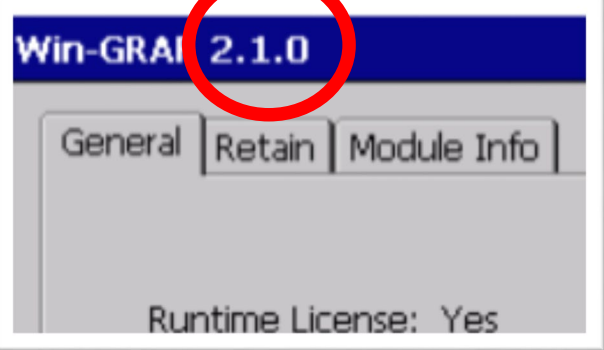
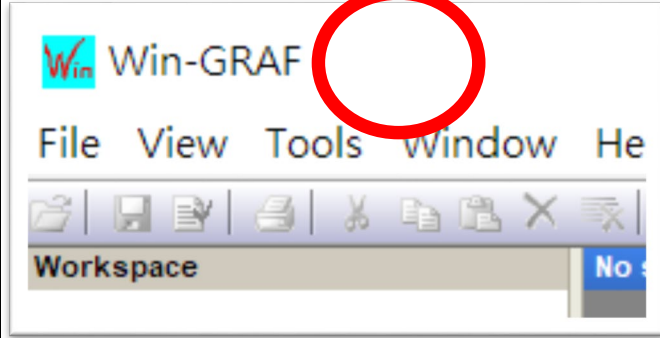
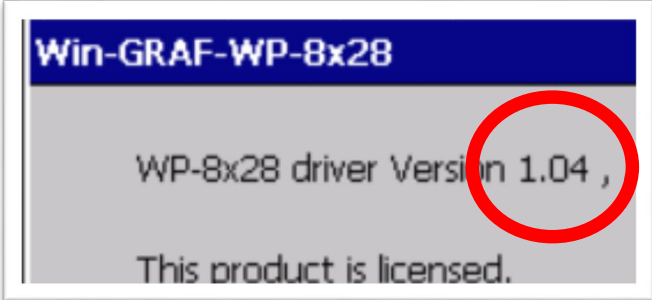
3) Run the PAC Utility, and then reboot the PAC to save all changes.

7 Version Identification

The match version rules for Workbench and Runtime:

- **Workbench 11.0** with **Runtime Ver. 2.xx (factory default)**
- Workbench **1.08** with Runtime Ver. **1.xx**

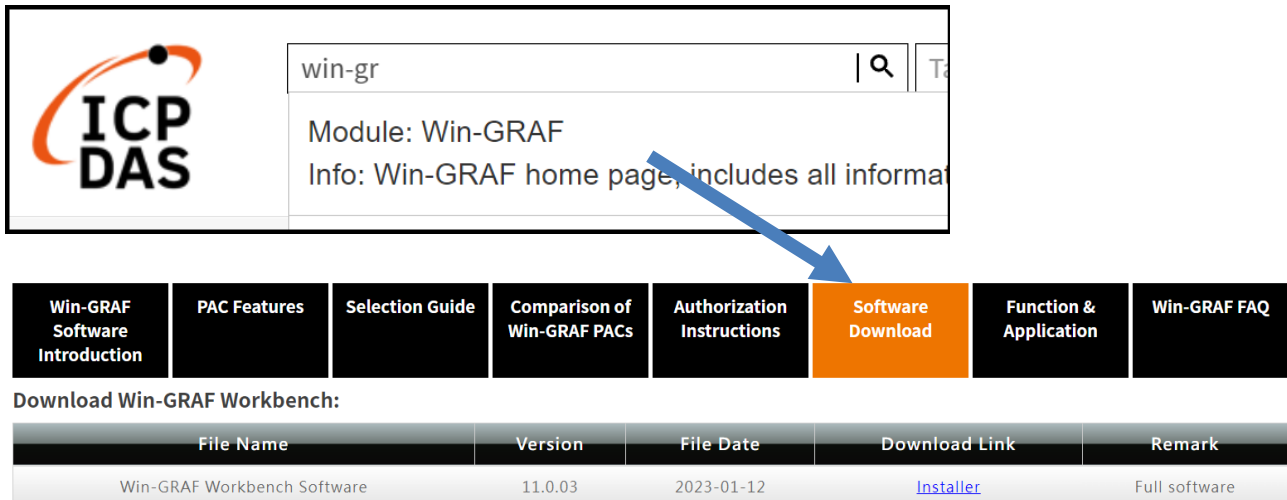
Figure for Version confirmation

Workbench 11.0	Runtime Ver. 2.xx
	
Workbench 1.08	Runtime Ver. 1.xx
※There's no version number on the top-left window. 	

Note: Win-GRAF runtime must be matched with Win-GRAF Workbench V11 (or later)

8 Download the Latest Win-GRAF Workbench V11 Along with the Runtime

Key in “**win-graf**” into Search Box at ICP DAS home page. Find and download Win-GRAF Workbench V11 from the “Software download” Tab.



ICP DAS

win-gr

Module: Win-GRAF
Info: Win-GRAF home page, includes all informa

Win-GRAF Software Introduction | PAC Features | Selection Guide | Comparison of Win-GRAF PACs | Authorization Instructions | **Software Download** | Function & Application | Win-GRAF FAQ

Download Win-GRAF Workbench:

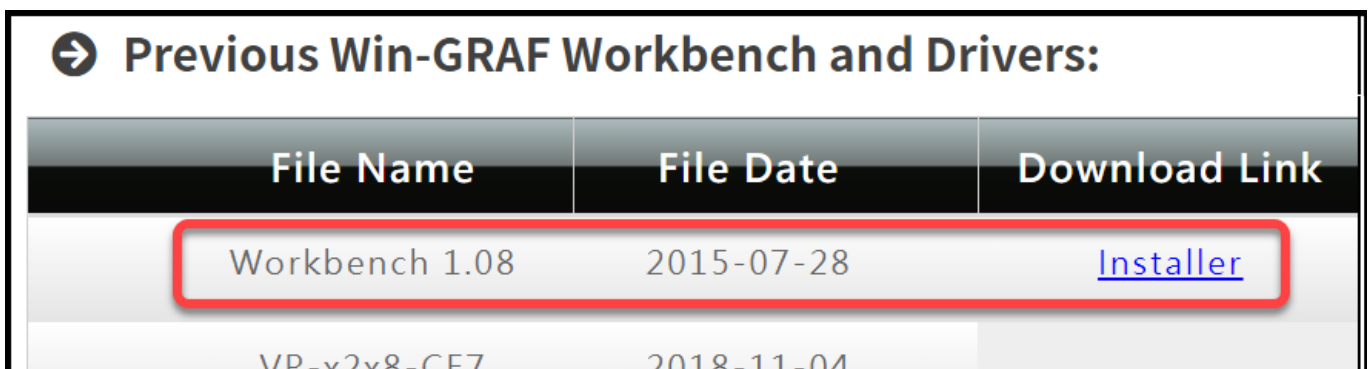
File Name	Version	File Date	Download Link	Remark
Win-GRAF Workbench Software	11.0.03	2023-01-12	Installer	Full software

9 Restore Old Version Win-GRAF Runtime (1.xx)

Win-GRAF runtime (2.xx) does not fully support files compiled by Win-GRAF Workbench version 1.08. If you'd like to restore the old version runtime, please download and restore the runtime of PAC by yourself to **restore it back to the 1.xx version** of Win-GRAF runtime.

The method to restore is as follows:

- 1) Drop down to the end of this Tab and download old version runtime.



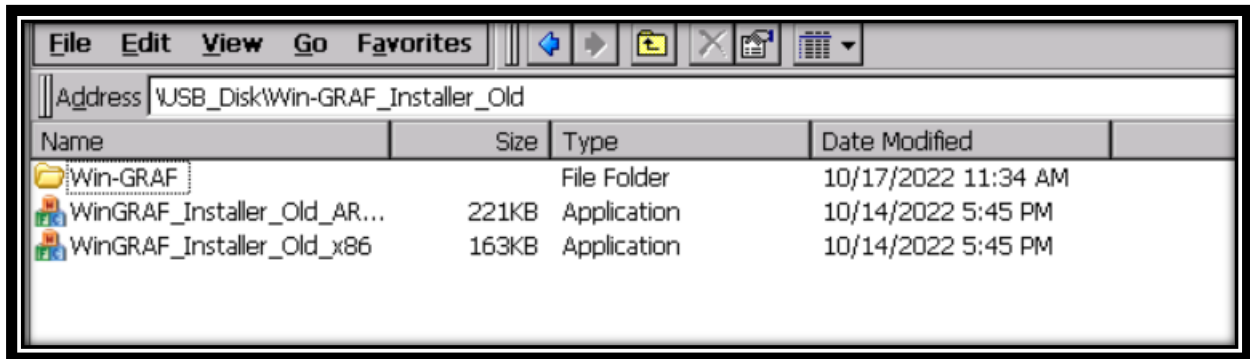
➔ Previous Win-GRAF Workbench and Drivers:

File Name	File Date	Download Link
Workbench 1.08	2015-07-28	Installer
VP-x2x8-CE7	2018-11-04	

2) Copy “**Win-GRAF_Installer_Old.Zip**” file into pen drive or micro SD card, and unzip it.

3) Install the runtime

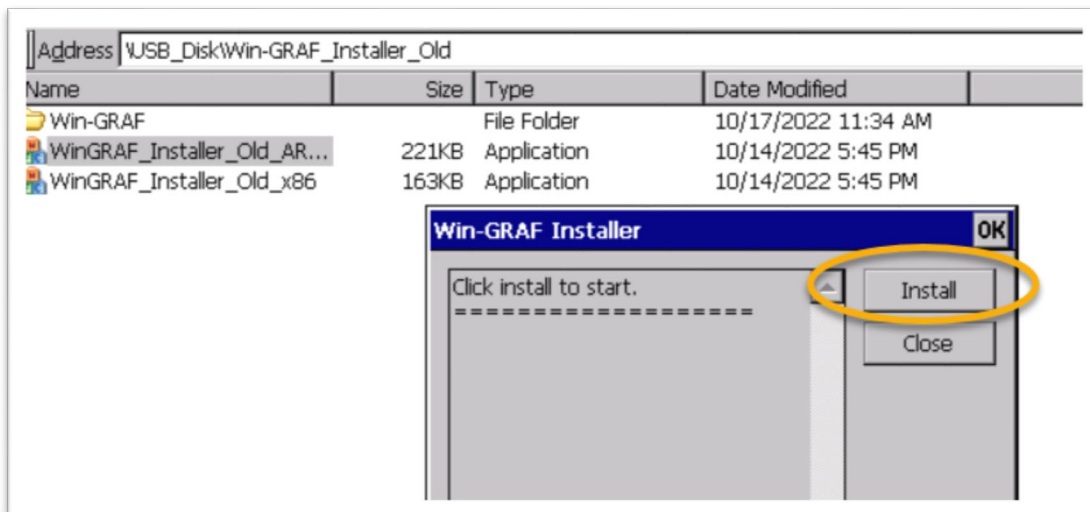
Open the file folder “Win-GRAF_Installer_Old” from pen drive or micro SD card. Capture as below:

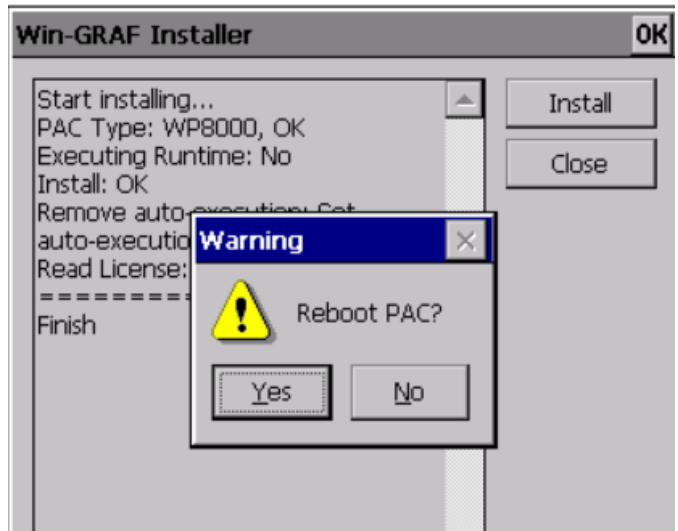
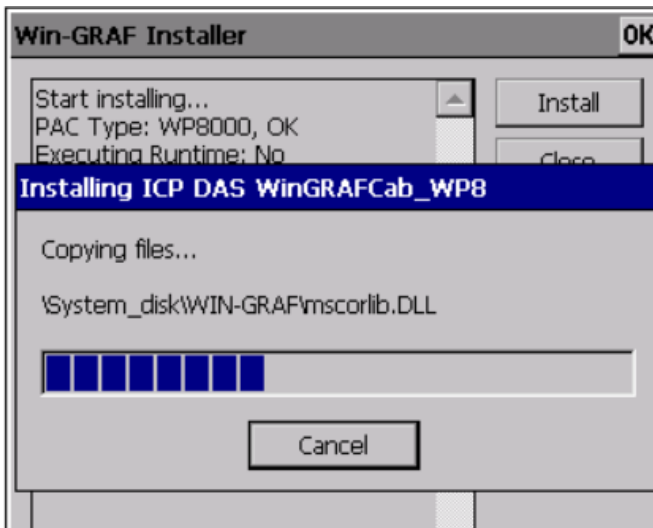


According to different CPUs, different execution files have to be selected:

- **XP-8x28-CE6** PACs: please install “WinGRAF_Installer_Old_x86.exe”
- **WP-9xx8-CE7, WP-8x28-CE7, WP-5238-CE7, VP-x2x8-CE7** PACs: please install “WinGRAF_Installer_Old_ARMv4l.exe”

After the PAC is successfully updated, reboot the PAC.





10 Ethernet Port (Workbench Port) Settings

Win-GRAF runtime (2.xx) or above version can set the Ethernet port.

Keep it as default **1100**. After setting, click “Set” button and reboot Win-GRAF Runtime to save the changes.

