

## Packing List

Apart from this guide, this package includes the following items:



WP-8128-CE7  
WP-8428-CE7  
WP-8828-CE7



microSD card and  
SD/microSD adapter



Screwdriver

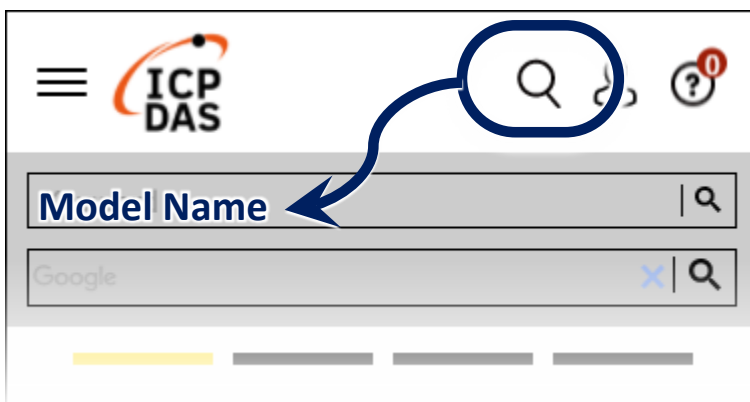
## Resources

How to search for drivers, manuals and spec information from ICP DAS website.

### • For Desktop Browser



### • For Mobile Web



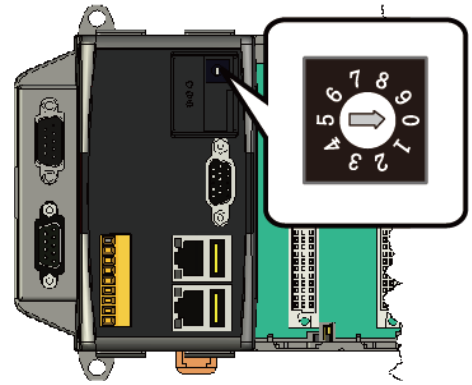
## Technical Support

[service@icpdas.com](mailto:service@icpdas.com)

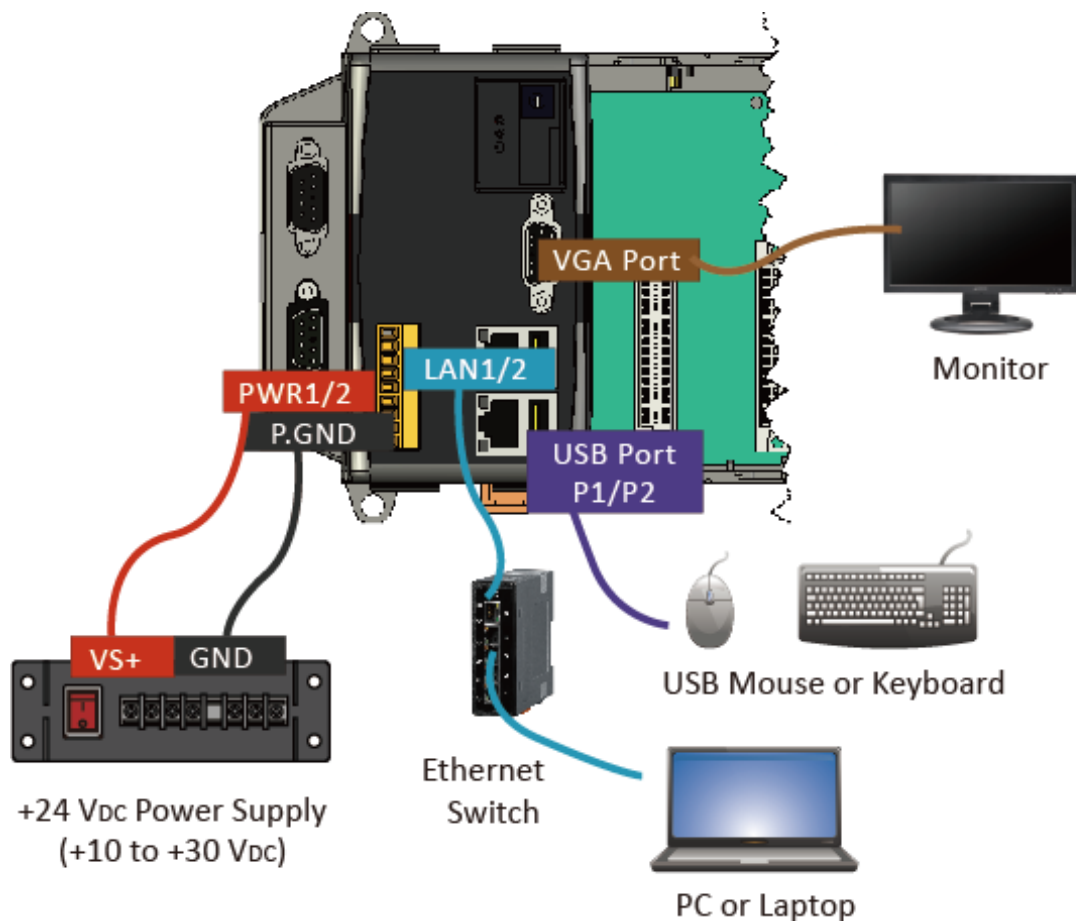
[www.icpdas.com](http://www.icpdas.com)

# 1 Configure the Boot Mode

Before starting the installation, ensure that the rotary switch is set into the “0” position.



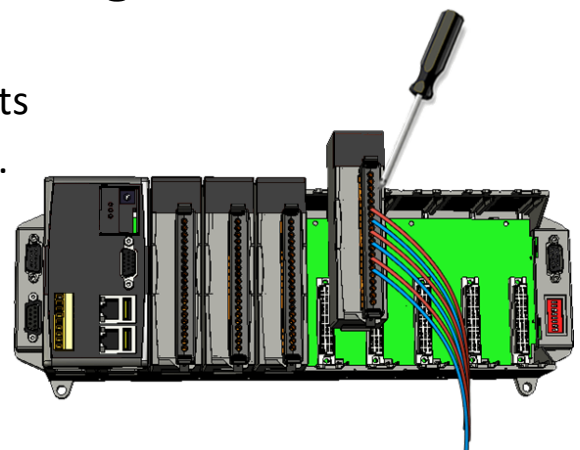
# 2 Connecting to PC, Monitor and Power Supply



# 3 Insert the I/O Module and Wiring

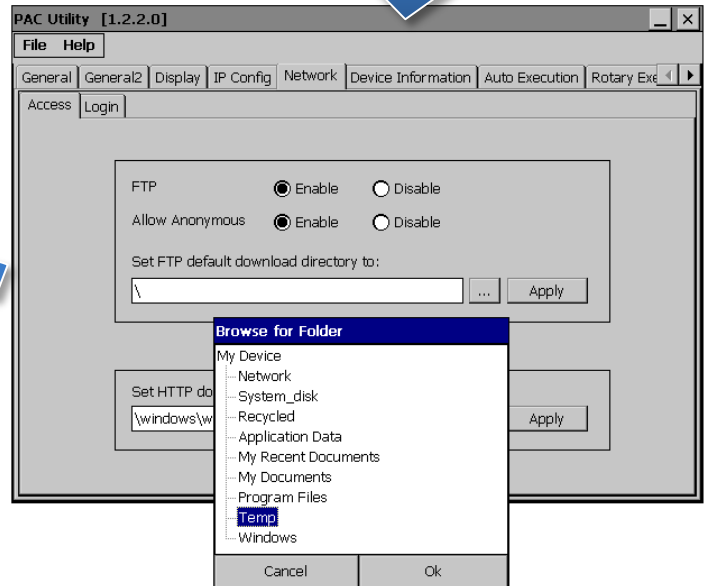
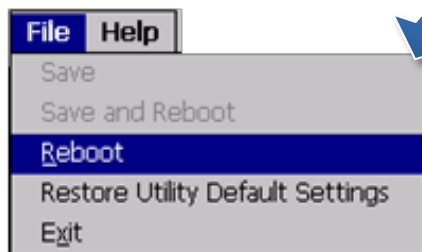
WP-8xx8-CE7 with 1/4/8 expand slots supports high profile I-8K and I-87K series I/O modules.

For more information about this expansion I/O modules, please refer to our website.




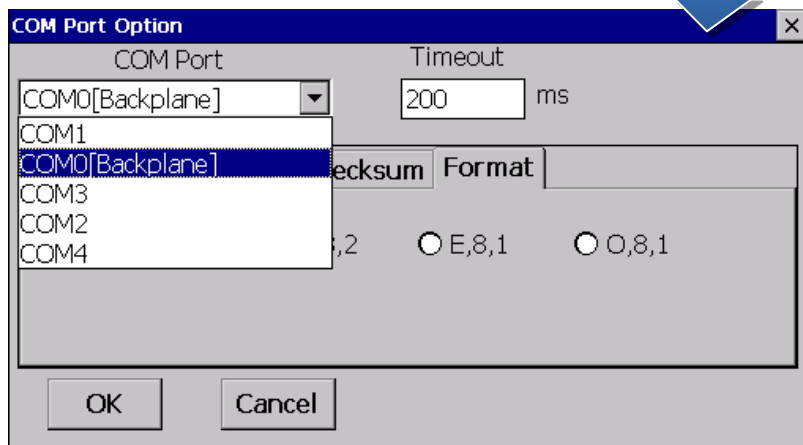
## 4 Use PAC Utility to Manage the WP-8xx8-CE7

- 1) Double-click the shortcut of “PAC Utility” on the desktop.
- 2) Configure IP address (DHCP), FTP Server, Auto Execution files..., etc.
- 3) Reboot the PAC to save all changes.



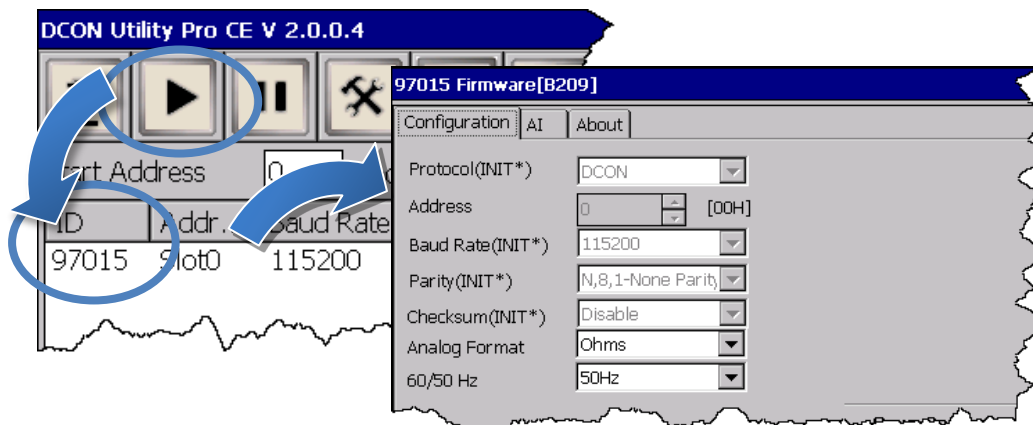
## 5 Use DCON Utility Pro to Configure I/O Modules

- 1) Double-click the shortcut of “DCON Utility Pro” on the desktop.
- 2) Click the  button.
- 3) Configure the communication settings.



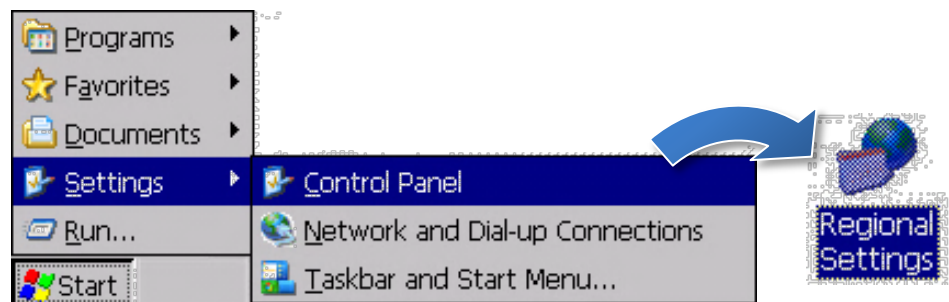
4) Click the  button.

5) Click the module name to configure the I/O module.

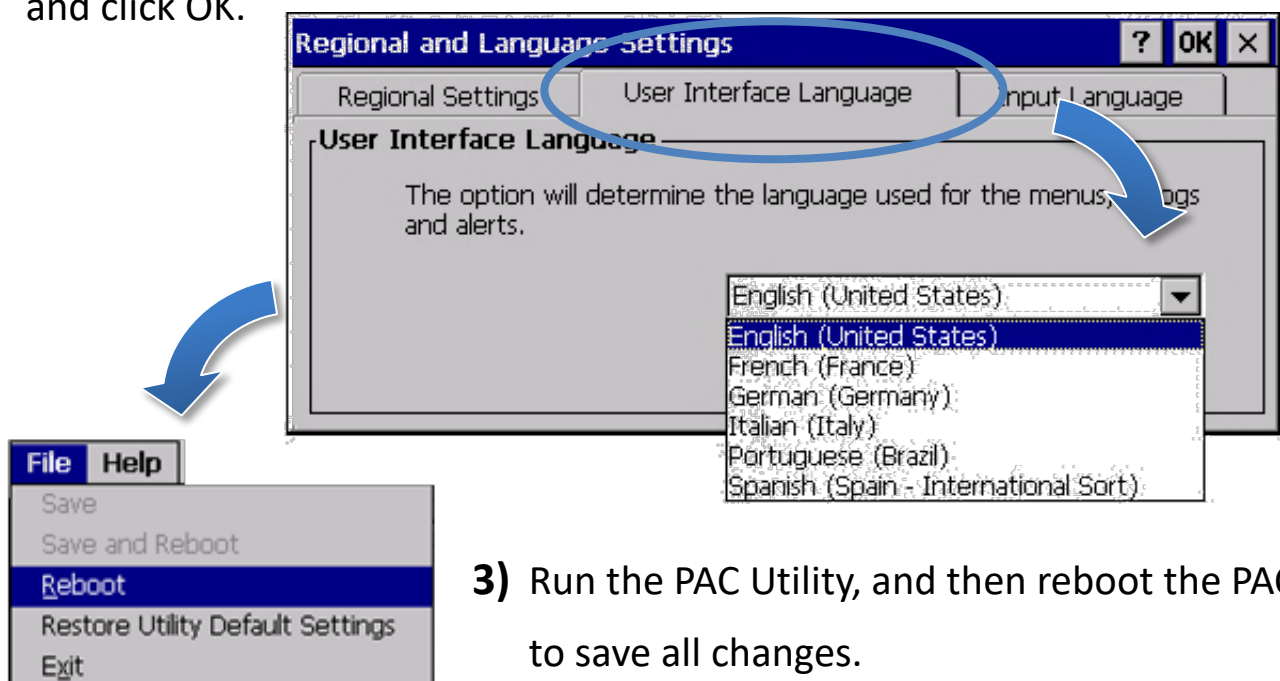


## 6 Change the Language

1) Select “Start”, choose “Settings”, click “Control Panel”, and then click Regional Settings.



2) Click “User Interface Language” tab, drop down to select the language, and click OK.



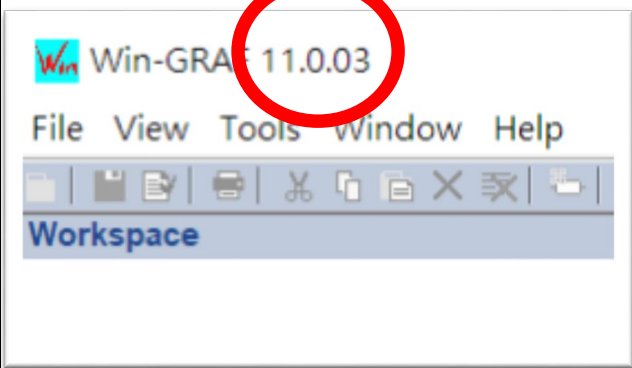
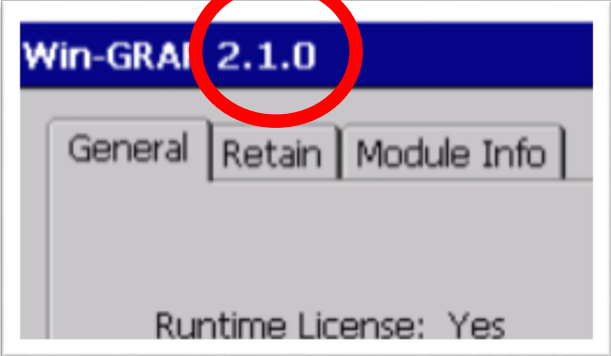
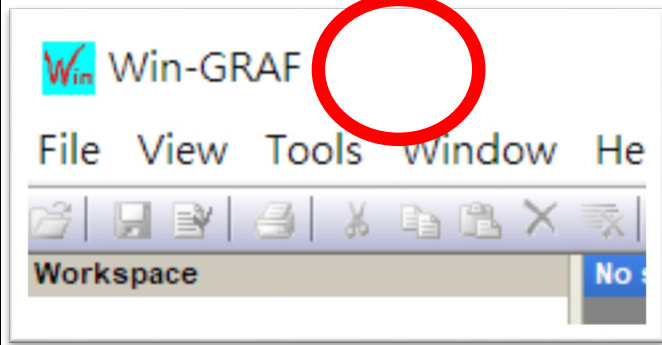
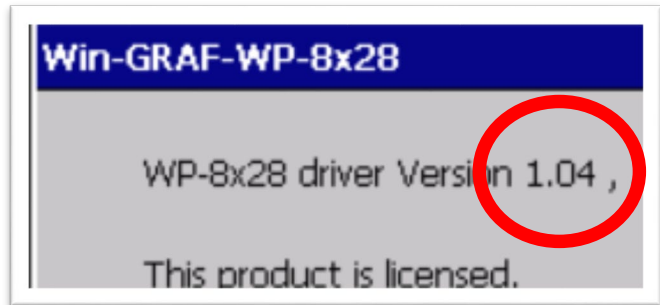
3) Run the PAC Utility, and then reboot the PAC to save all changes.

# 7 Version Identification

The match version rules for Workbench and Runtime:

- **Workbench 11.0** with **Runtime Ver. 2.xx (factory default)**
- Workbench **1.08** with Runtime Ver. **1.xx**

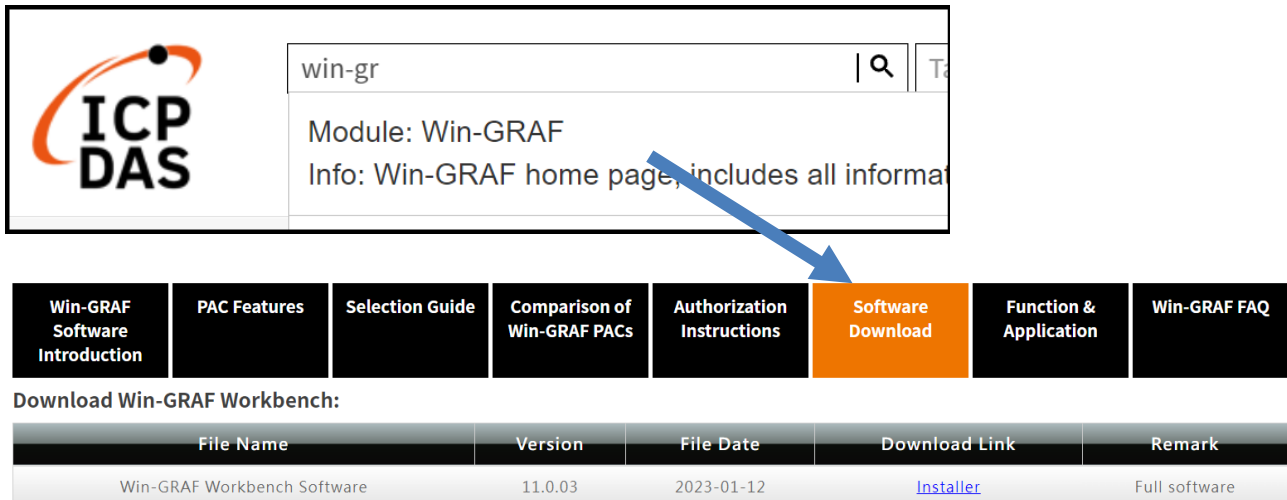
Figure for Version confirmation

Workbench <b>11.0</b>	Runtime Ver. <b>2.xx</b>
	
Workbench <b>1.08</b>	Runtime Ver. <b>1.xx</b>
※There's no version number on the top-left window. 	

*Note: Win-GRAF runtime must be matched with Win-GRAF Workbench V11 (or later)*

## 8 Download the Latest Win-GRAF Workbench V11 Along with the Runtime

Key in “**win-graf**” into Search Box at ICP DAS home page. Find and download Win-GRAF Workbench V11 from the “Software download” Tab.



The screenshot shows the ICP DAS website interface. At the top left is the ICP DAS logo. To its right is a search bar containing the text 'win-gr'. Below the search bar, a dropdown menu displays 'Module: Win-GRAF' and 'Info: Win-GRAF home page, includes all informa'. A blue arrow points from this dropdown to the 'Software Download' tab in the navigation menu. The navigation menu includes tabs for 'Win-GRAF Software Introduction', 'PAC Features', 'Selection Guide', 'Comparison of Win-GRAF PACs', 'Authorization Instructions', 'Software Download' (highlighted in orange), 'Function & Application', and 'Win-GRAF FAQ'. Below the navigation menu, the text 'Download Win-GRAF Workbench:' is followed by a table.

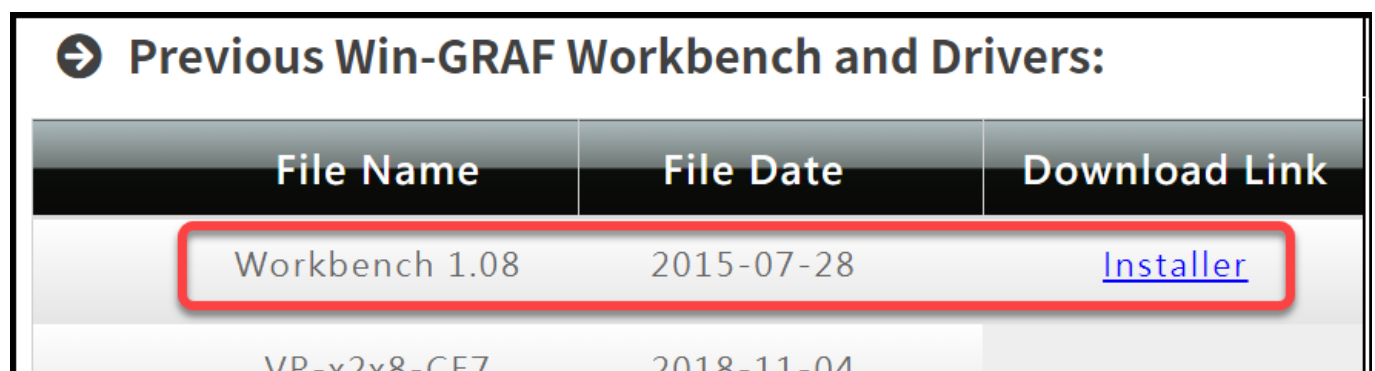
File Name	Version	File Date	Download Link	Remark
Win-GRAF Workbench Software	11.0.03	2023-01-12	<a href="#">Installer</a>	Full software

## 9 Restore Old Version Win-GRAF Runtime (1.xx)

Win-GRAF runtime (2.xx) does not fully support files compiled by Win-GRAF Workbench version 1.08. If you'd like to restore the old version runtime, please download and restore the runtime of PAC by yourself to **restore it back to the 1.xx version** of Win-GRAF runtime.

The method to restore is as follows:

- 1) Drop down to the end of this Tab and download old version runtime.



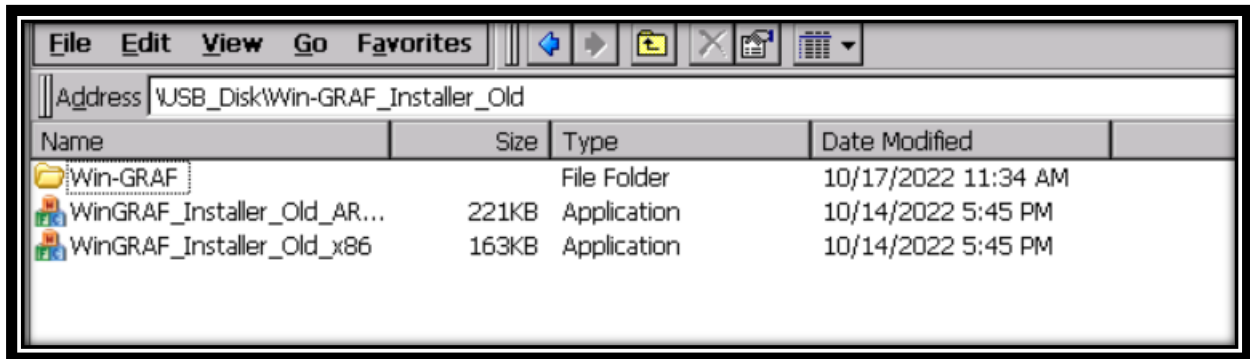
The screenshot shows a section titled 'Previous Win-GRAF Workbench and Drivers:'. Below the title is a table with three columns: 'File Name', 'File Date', and 'Download Link'. The first row of the table is highlighted with a red rectangle and contains the text 'Workbench 1.08', '2015-07-28', and '[Installer](#)'. The second row contains 'VP-x2x8-CE7' and '2018-11-04'.

File Name	File Date	Download Link
Workbench 1.08	2015-07-28	<a href="#">Installer</a>
VP-x2x8-CE7	2018-11-04	

2) Copy “**Win-GRAF\_Installer\_Old.Zip**” file into pen drive or micro SD card, and unzip it.

3) Install the runtime

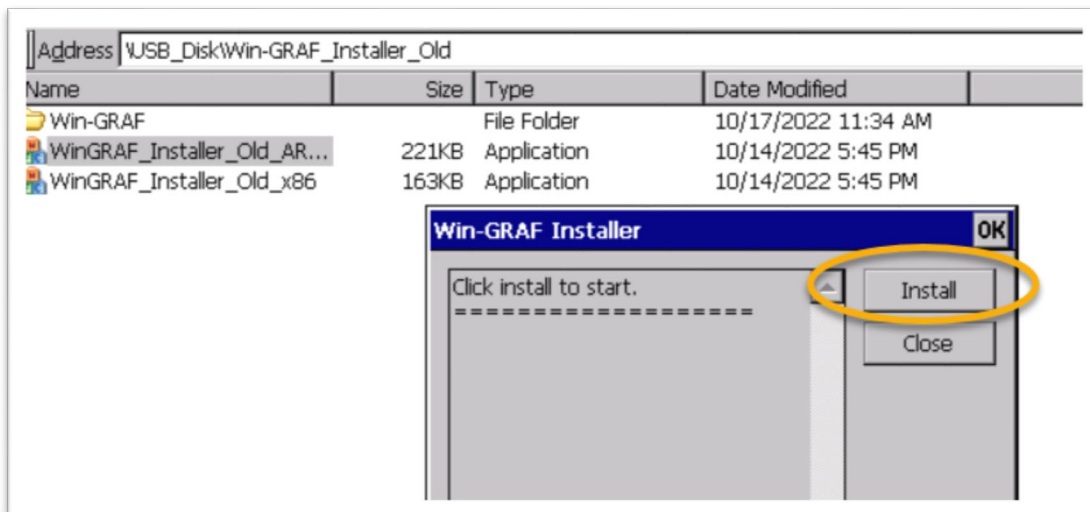
Open the file folder “Win-GRAF\_Installer\_Old” from pen drive or micro SD card. Capture as below:

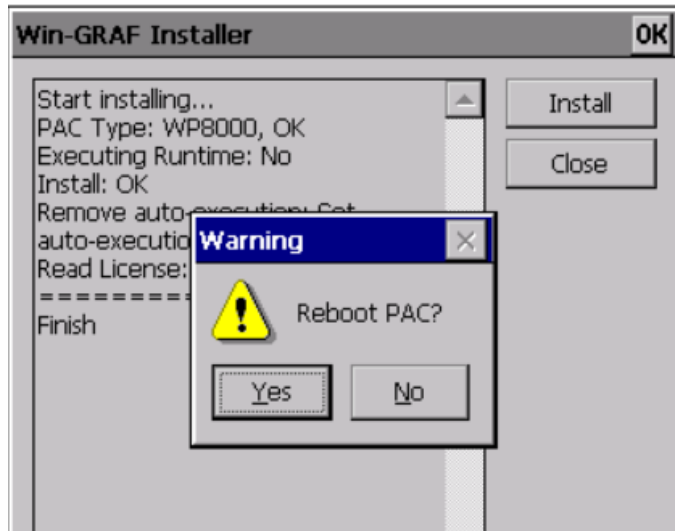
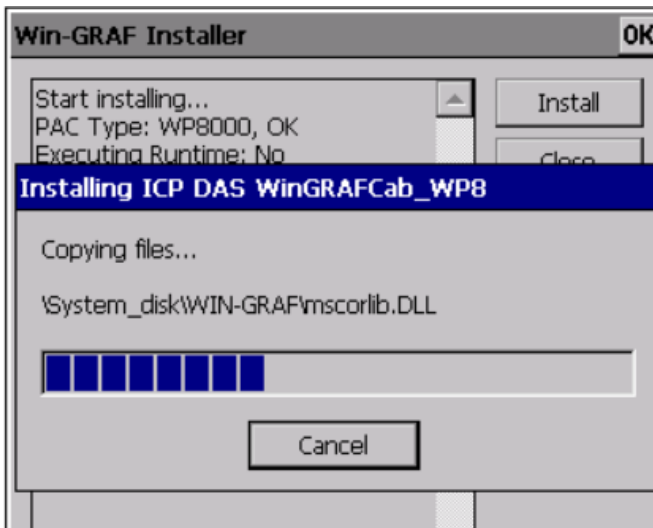


According to different CPUs, different execution files have to be selected:

- **XP-8x28-CE6** PACs: please install “WinGRAF\_Installer\_Old\_x86.exe”
- **WP-9xx8-CE7, WP-8x28-CE7, WP-5238-CE7, VP-x2x8-CE7** PACs: please install “WinGRAF\_Installer\_Old\_ARMv4I.exe”

After the PAC is successfully updated, reboot the PAC.





## 10 Ethernet Port (Workbench Port) Settings

Win-GRAF runtime (2.xx) or above version can set the Ethernet port.

Keep it as default **1100**. After setting, click “Set” button and reboot Win-GRAF Runtime to save the changes.

