

Classification	Win-GRAF Chinese FAQ							
Author	Adam Chen	Version	1.0.0	Date	2016,6	Page	1 / 8	

How to build Your Own Function, Function Block and Library Project in the Win-GRAF PAC?

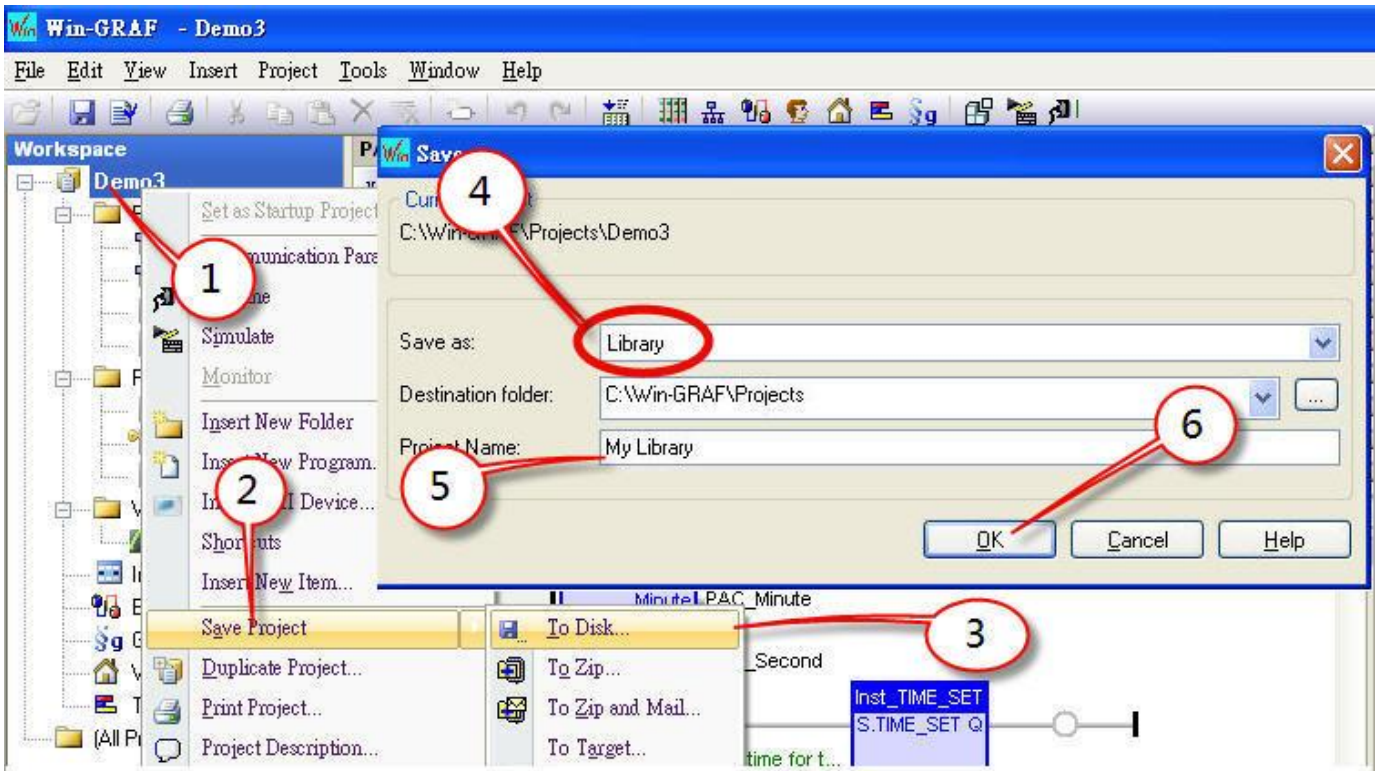
This FAQ describes how to save the existing Function or Function Block of a Win-GRAF project as a Library Project, or start a new Library Project.

1.1. To build a new Library Project

There are two ways to establish. Please see the following description.

- **To Save the existing Project as the Library Project**

First run the Win-GRAF, open an existing Project file (in this case: Demo3), mouse right click on **Project name > Save Project > To Disk**, choose save as **Library** type, enter your Project name (for example: My Library), and then press **OK** to save the Library Project.

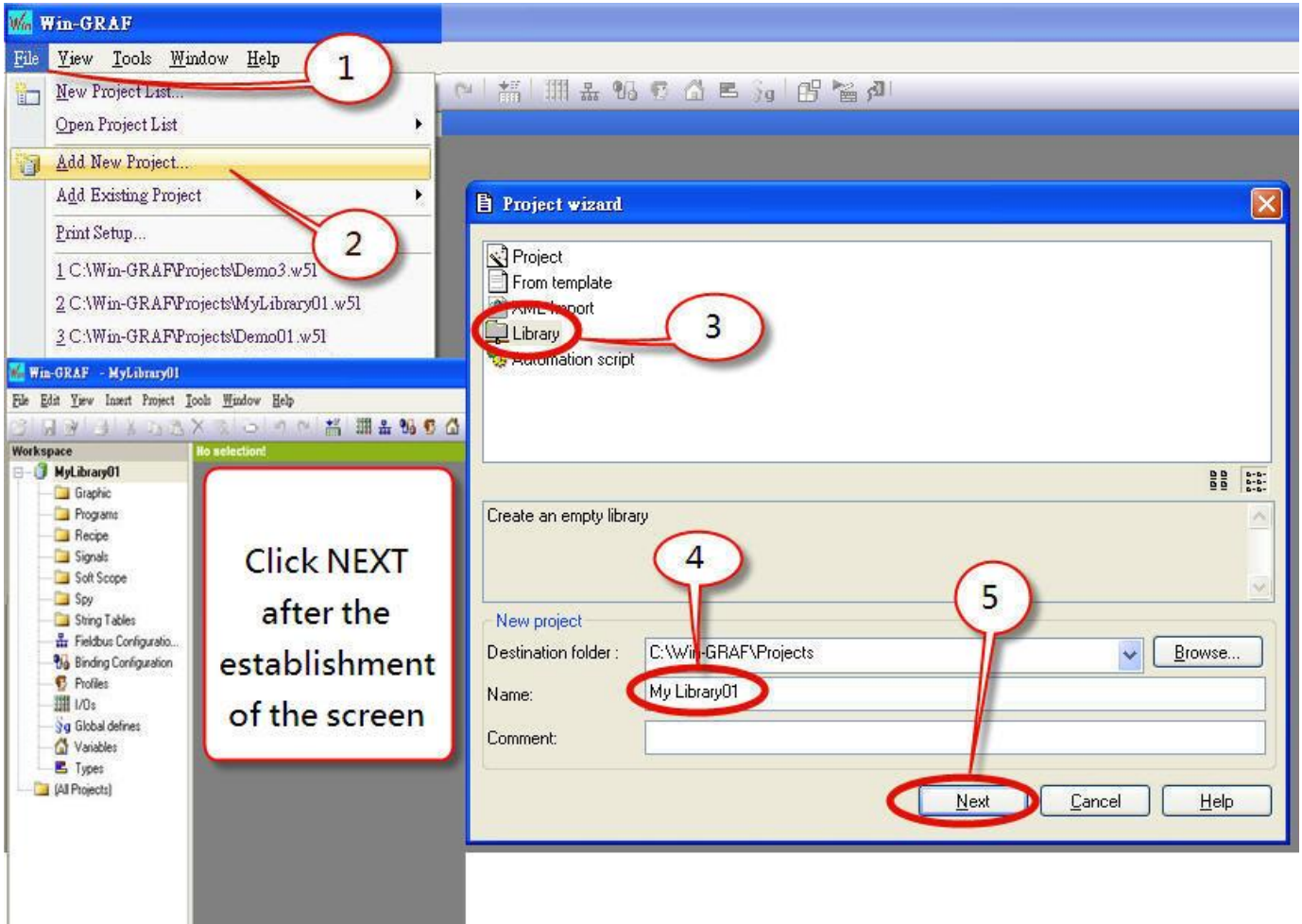


The method to transfer a function from an existing project to the type of Library Project.

Classification	Win-GRAF Chinese FAQ							
Author	Adam Chen	Version	1.0.0	Date	2016,6	Page	2 / 8	

● Establish a new Library Project

The other method is to add a new Project. First, run the Win-GRAF, click the menu **File > Add New Project**, select the project type of “Library”, enter your new project Name (for example: My Library01), and then click **NEXT** to build your Library Project.

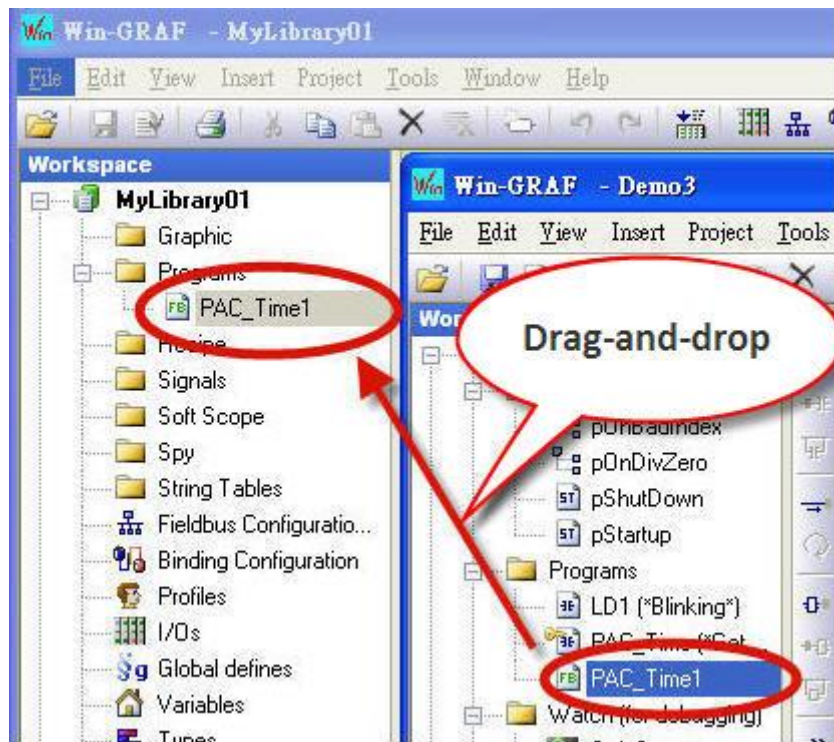


Classification	Win-GRAF Chinese FAQ						
Author	Adam Chen	Version	1.0.0	Date	2016,6	Page	3 / 8

1.2. Add a Function or Function Block

- **Copy the Function or Function Block from the existing Project to the Library Project**

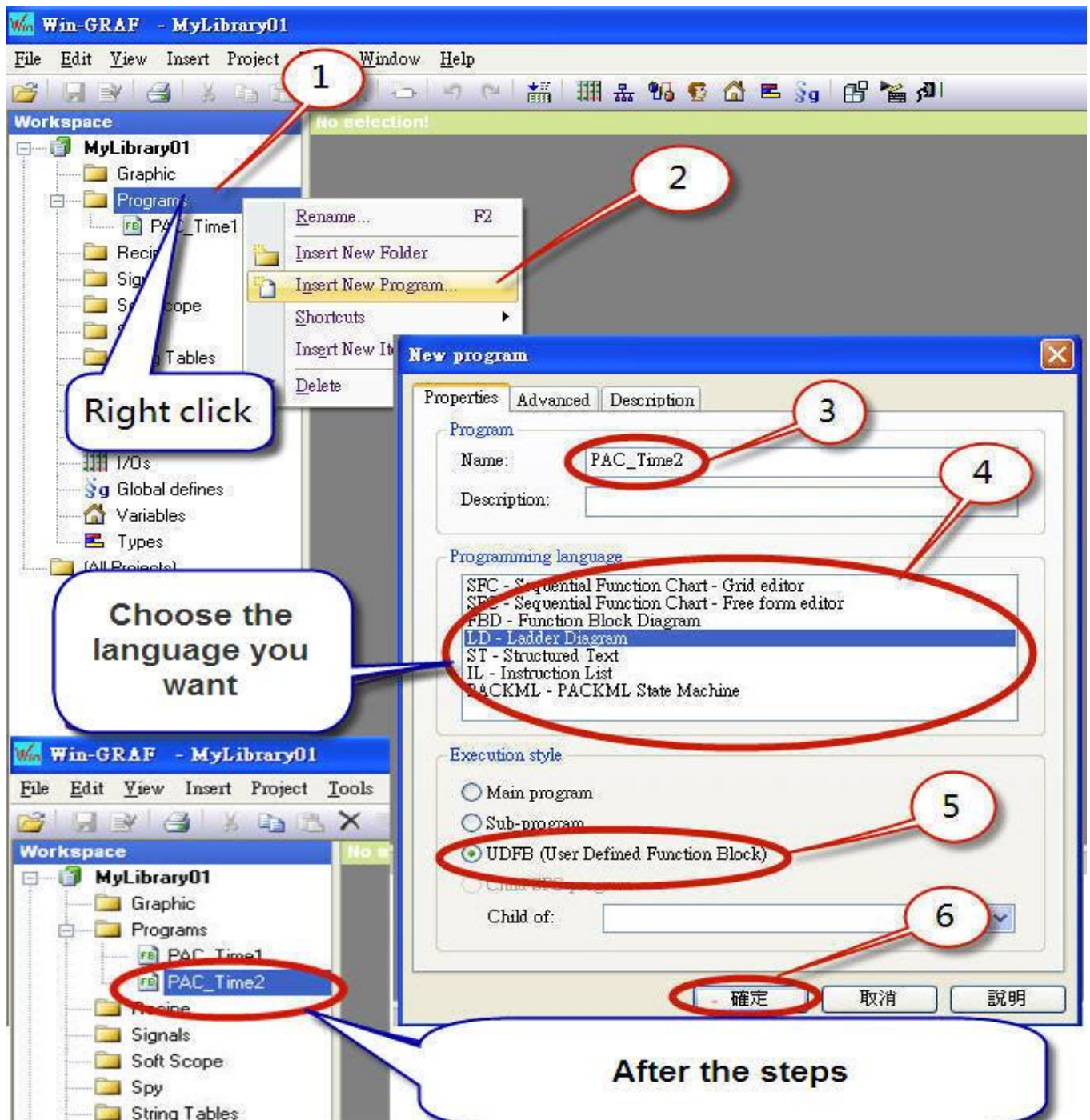
First, run two Win-GRAF, one opens your existing project, one opens the Library Project (The Library Project will have a green LOGO on the left side of the project name.), and then you can copy the program by drag-and-drop from the existing project to the Library Project.



Classification	Win-GRAF Chinese FAQ						
Author	Adam Chen	Version	1.0.0	Date	2016,6	Page	4 / 8

● Create a New Function or Function Block in the Library Project

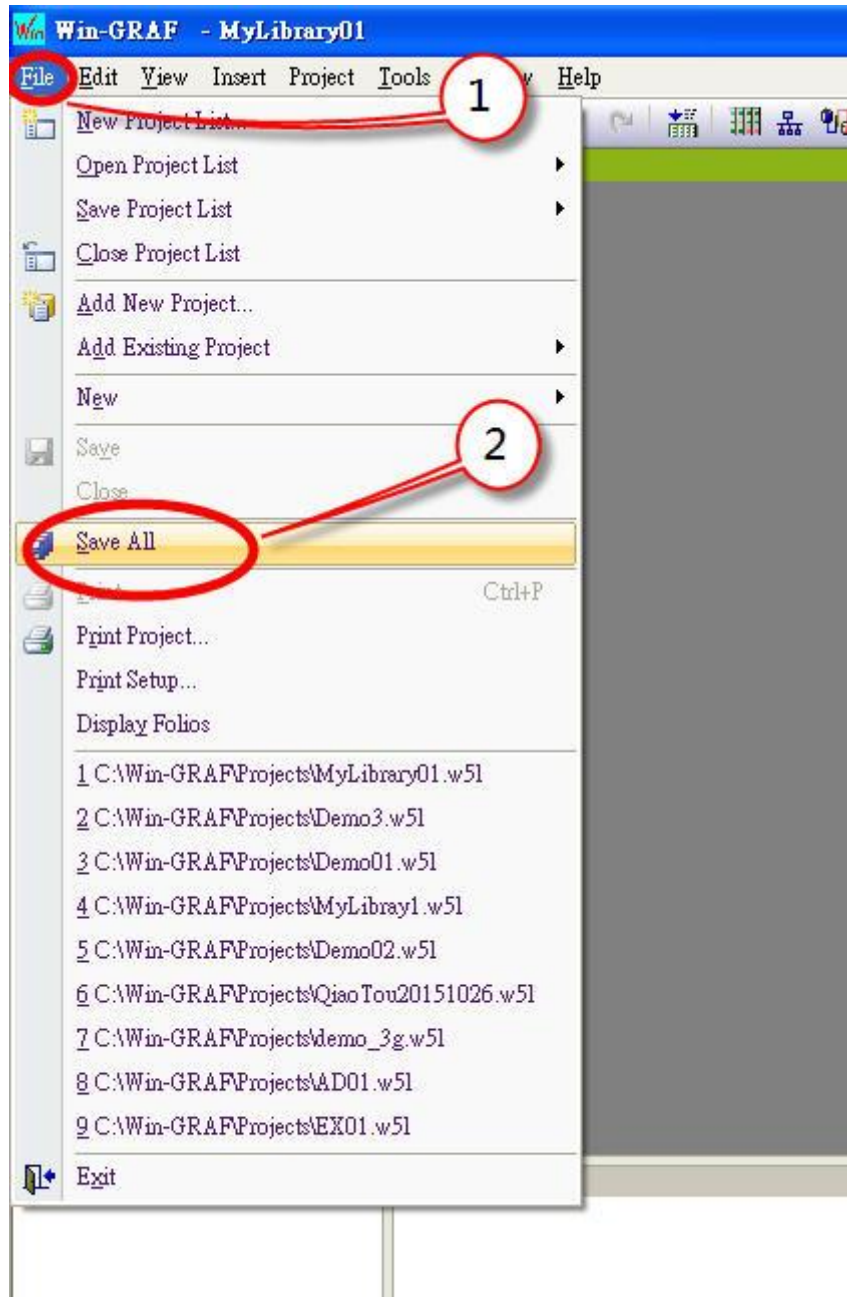
First, run the Win-GRAF, open the Library Project, right click on **Programs**, select **Insert New Program**, enter your new Function name (For instance: PAC_Time2), choose the **Programming language** you want, check the box of **UDFB (User Defined Function Block)**, press **OK**, and then a Function or Function Block will be added as below.



Classification	Win-GRAF Chinese FAQ						
Author	Adam Chen	Version	1.0.0	Date	2016,6	Page	5 / 8

● Save Library Project

Click **File > Save All** to save your Library Project.

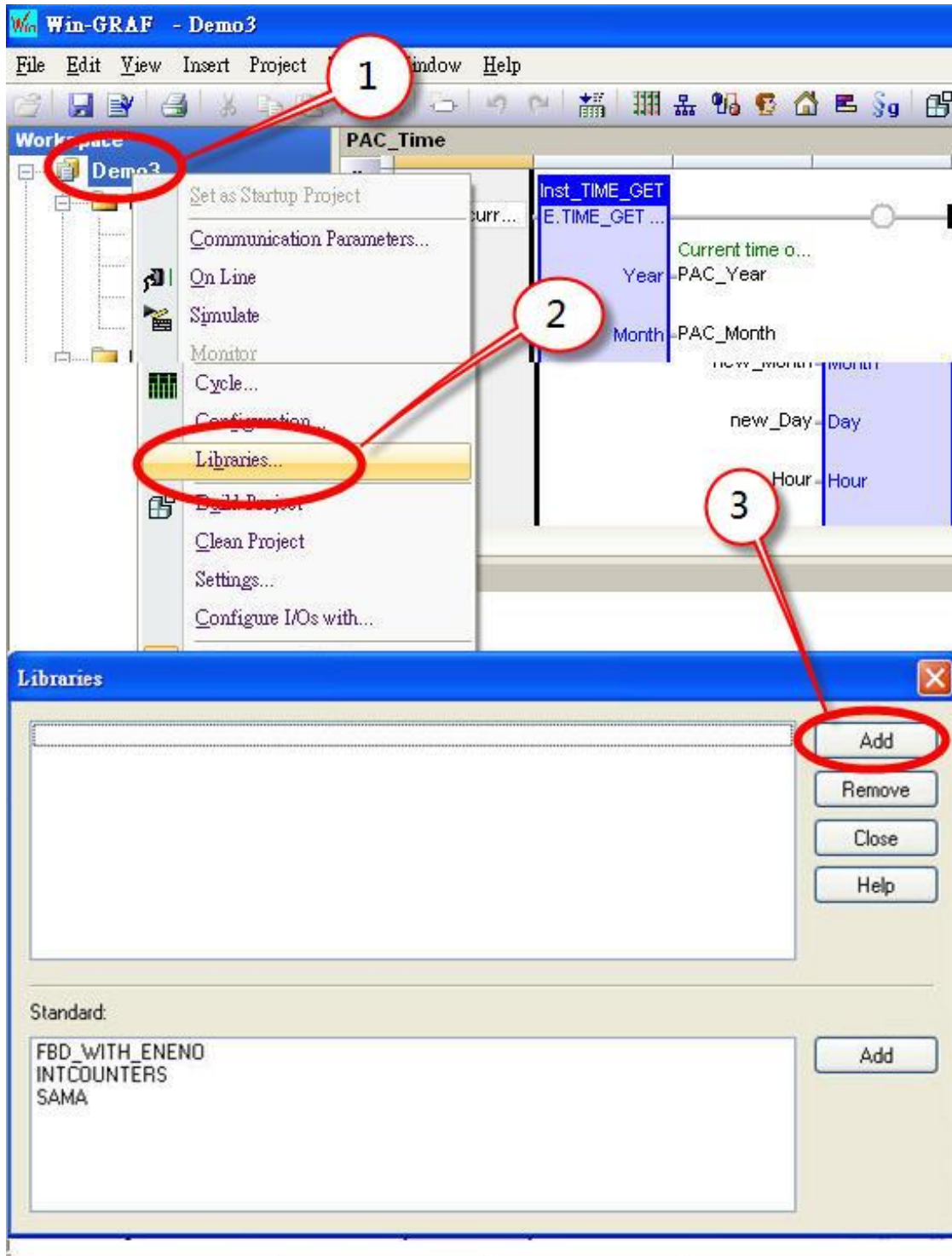


Classification	Win-GRAF Chinese FAQ							
Author	Adam Chen	Version	1.0.0	Date	2016,6	Page	6 / 8	

1.3. Add a Library in an Existing Project

- **Add a Library**

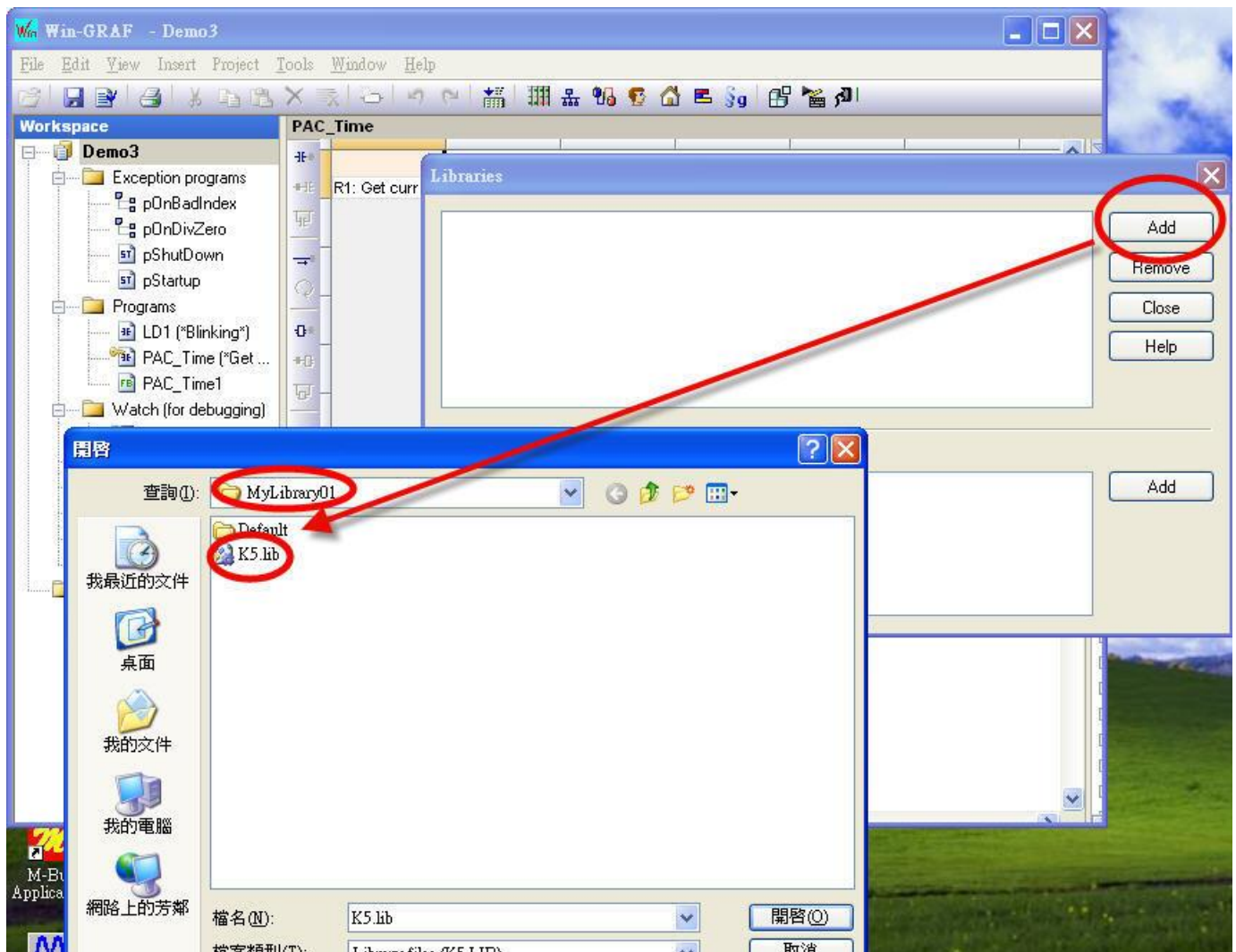
First, run the Win-GRAF, open your project, right mouse clicks on the project name, select **Libraries**, and click **Add** button of the "libraries" window.



Classification	Win-GRAF Chinese FAQ							
Author	Adam Chen	Version	1.0.0	Date	2016,6	Page	7 / 8	

● Open Library Project way

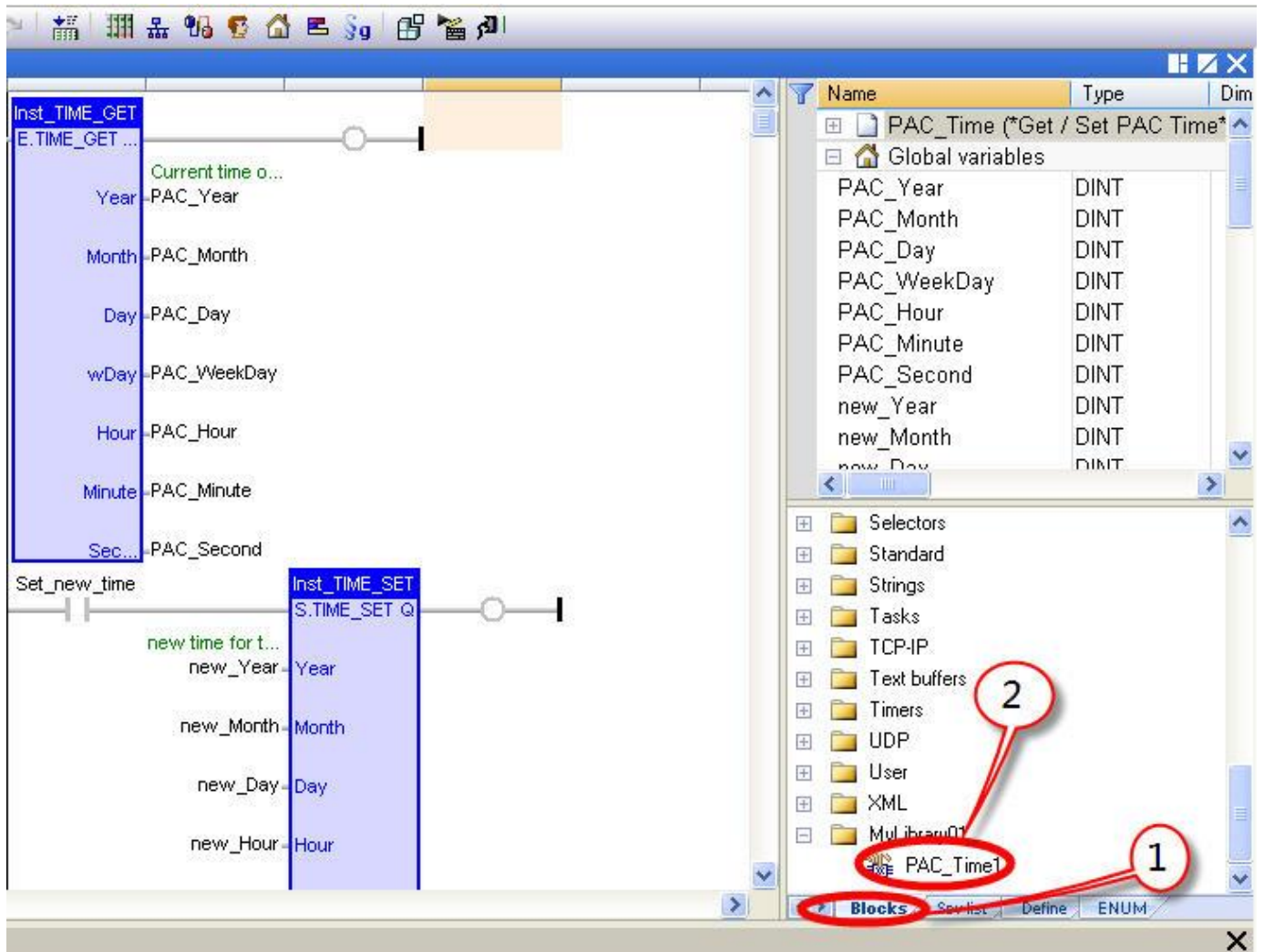
In the “open” window, browse for your Win-GRAF folder and your project folder to select your Library project (in this case: **MyLibrary01**), and then choose "**K5.lib**".



Classification	Win-GRAF Chinese FAQ							
Author	Adam Chen	Version	1.0.0	Date	2016,6	Page	8 / 8	

● **To Confirm the New Library Project**

After the adding steps, your new Library Project will appear in the **Blocks**, click the project name will show the new Function or Function Block.



Click the link for more Win-GRAF FAQ:

<https://www.icpdas.com/en/faq/index.php?kind=273#840>