

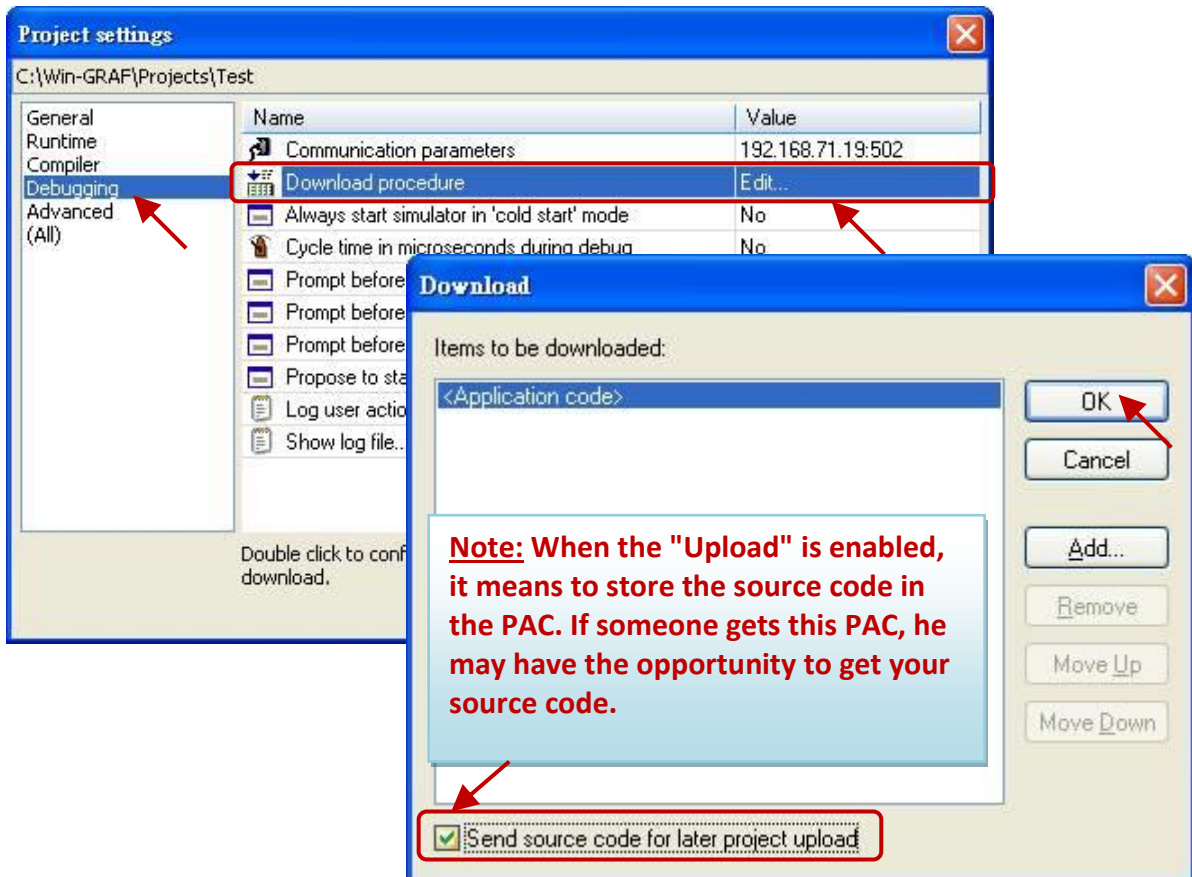
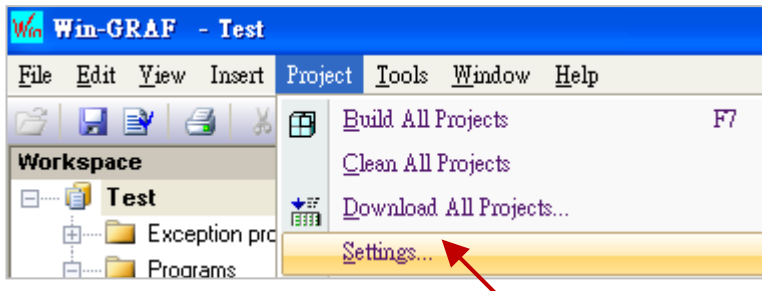
Classification	Win-GRAF English FAQ-004							
Author	Eva Li	Version	1.0.0	Date	Nov. 2015	Page	1 / 3	

How to Download the Win-GRAF Project Source Code to the PAC? How to Upload the Project from the PAC to the PC?


1.1. How to Enable "Send Source Code for Later Project Upload"

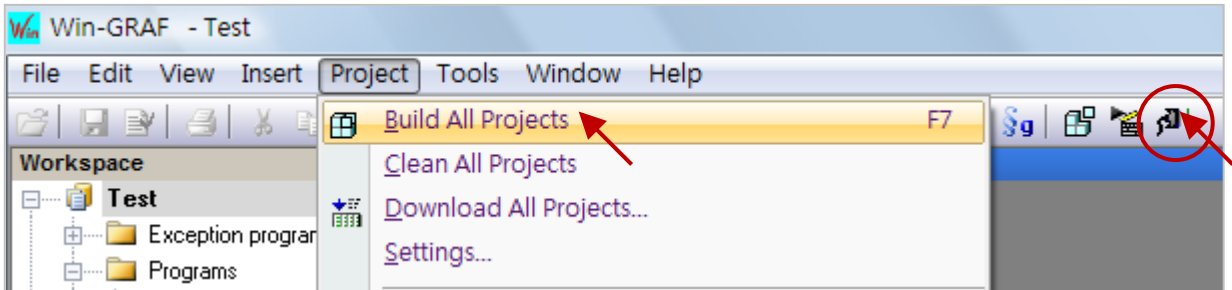
This **Download Project Source Code** function is to download the Win-GRAF project with its source code to the PAC for later project source code upload. It can prevent the project source code from missing or incomplete handover from the previous worker, you can still get the project source code inside the PAC.

1. Click on the menu bar "Project" > "Settings" to open the setting window.
2. Double click on the "Download procedure" of the "Debugging" and select "Send source code for later project upload", and then click "OK".



Classification	Win-GRAF English FAQ-004						
Author	Eva Li	Version	1.0.0	Date	Nov. 2015	Page	2 / 3

- Click on the menu bar "Project" > "Build All Projects" to compile the program, and then click on the tool icon  to connect the PAC, and next, download the compiled project to the PAC. (Refer the [Win-GRAF Getting Started Manual](#) - Section 2.3.5 for the detail steps). After downloading, the source code will be stored in the file of the directory "\\System_Disk\Win-GRAF\t5.upl" of the PAC. This file will be larger when the project increases. If the project becomes very large and complex, the file size may reach several hundreds K Bytes or even more than 1 MB.

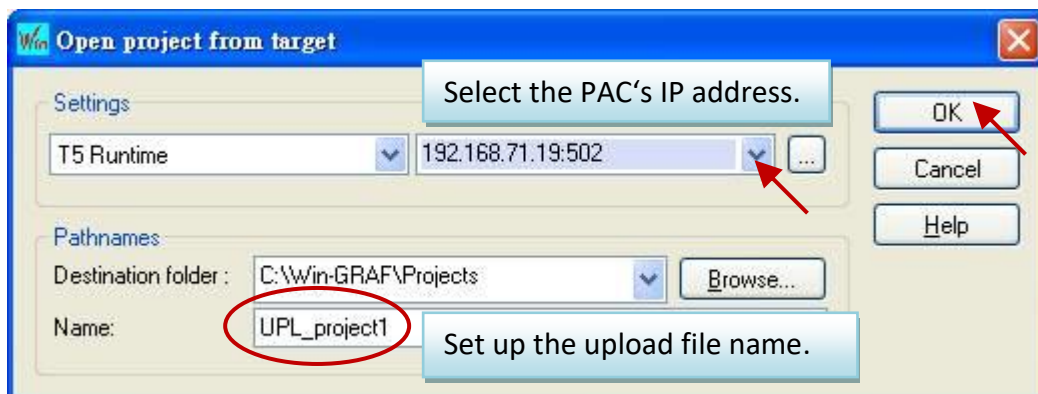
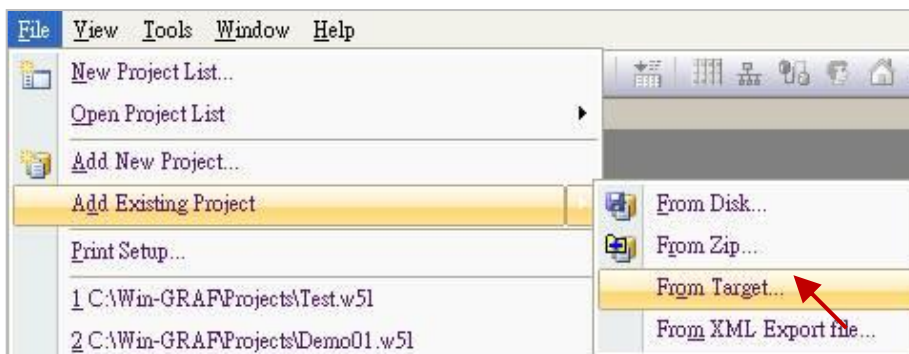


1.2. How to Upload the Project Source Code

This **Upload Project Source Code** function can be done only when the Win-GRAF project and its source code had been downloaded to the controller/PAC (see Sec. 1.1).

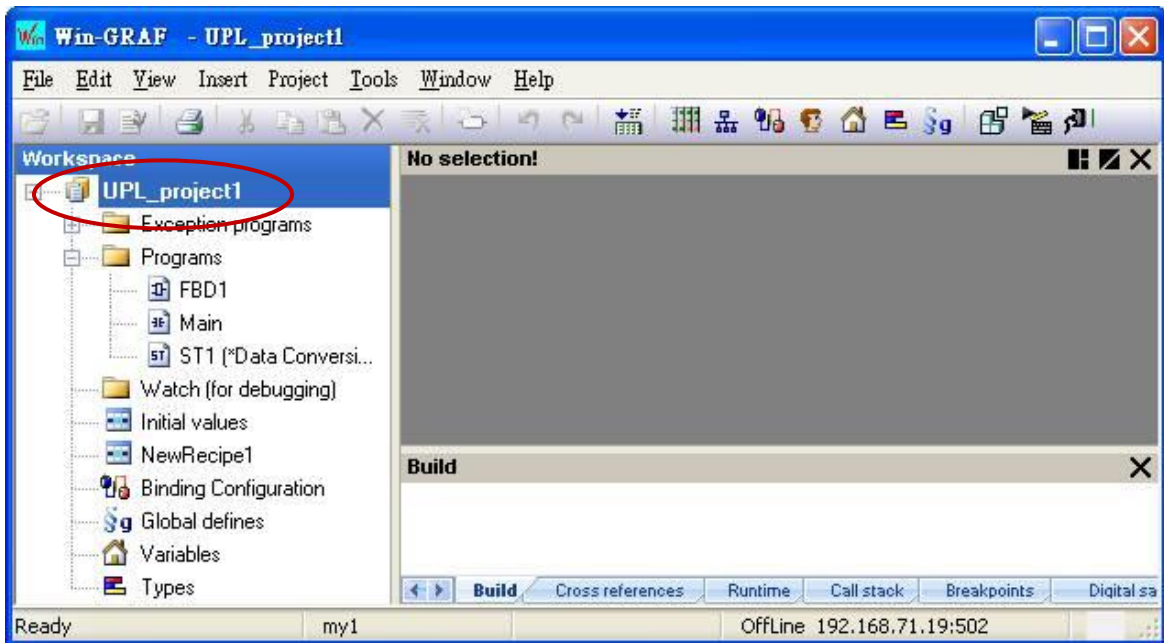
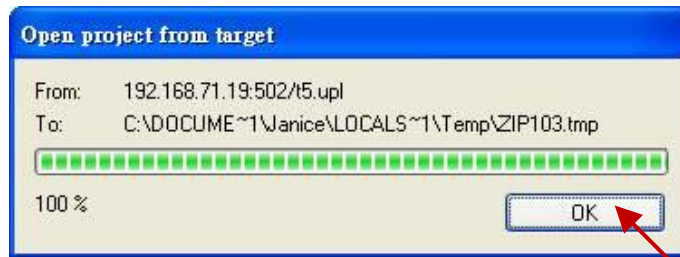
Please close all opened Win-GRAF windows (Click on the menu bar "File" > "Close Project List").

- Click on the menu bar "File" > "Add Existing Project" > "From Target", then select the PAC's IP address and set up the upload file name (e.g., "UPL_project1"), and then click "OK" to upload the file.



Classification	Win-GRAF English FAQ-004						
Author	Eva Li	Version	1.0.0	Date	Nov. 2015	Page	3 / 3

2. After uploading, click on "OK" button, and then the Win-GRAF will open the project automatically.



Click the link for more Win-GRAF FAQ:

<https://www.icpdas.com/en/faq/index.php?kind=273#840>