

|                |                          |         |       |      |           |      |       |
|----------------|--------------------------|---------|-------|------|-----------|------|-------|
| Classification | Win-GRAF English FAQ-001 |         |       |      |           |      |       |
| Author         | Janice Hong              | Version | 1.0.0 | Date | Oct. 2015 | Page | 1 / 7 |

## How to Install and Run the Win-GRAF Workbench?

### 1.1. Install the Win-GRAF Workbench

Before installing the Win-GRAF Workbench, check the installation environment on your PC.

#### System requirements:

- **O.S.:** Windows XP, Windows Vista, Windows 7, Windows 8 (32-bit or 64-bit)
- **Microsoft .Net Framework 3.5** (Download it on the Microsoft web site:  
<http://www.microsoft.com/zh-tw/download/details.aspx?id=22>)
- **RAM:** 1 GB minimum (Recommended: 2 GB or more)
- **Available hard-disk space:** 200 MB minimum

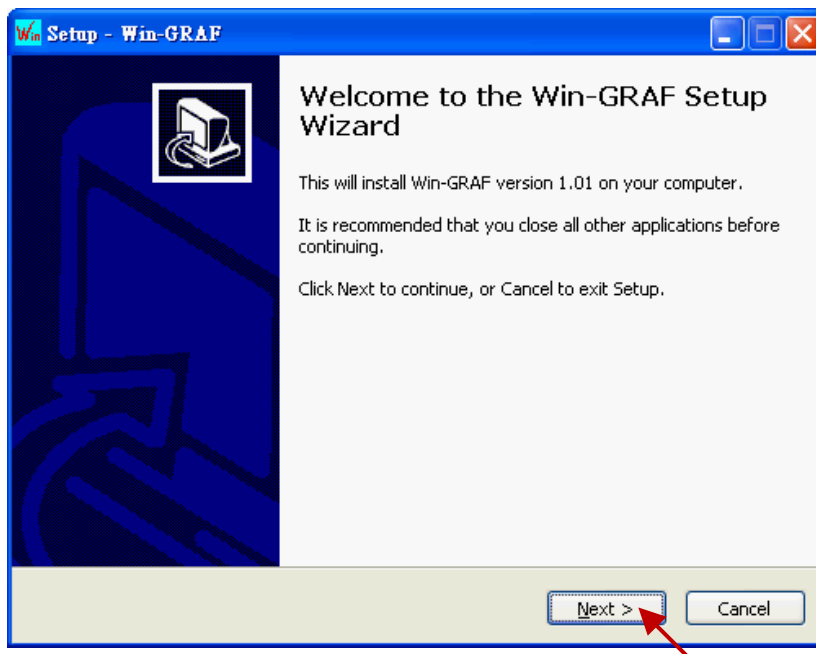
#### Installation Steps:

1. Double-click the “Win-GRAF-setup-ver-x.xx.exe” file in the Win-GRAF installation CD.  
(or download the Win-GRAF Workbench on the website.)

<https://www.icpdas.com/en/download/show.php?num=711&nation=US&kind1=&model=&kw=win-graf>

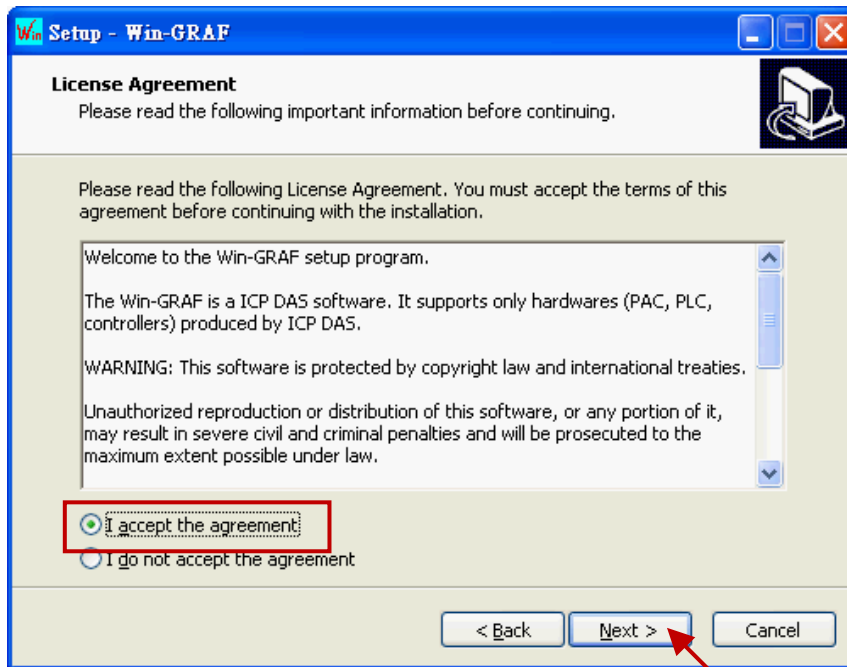


2. Click “Next” to continue.

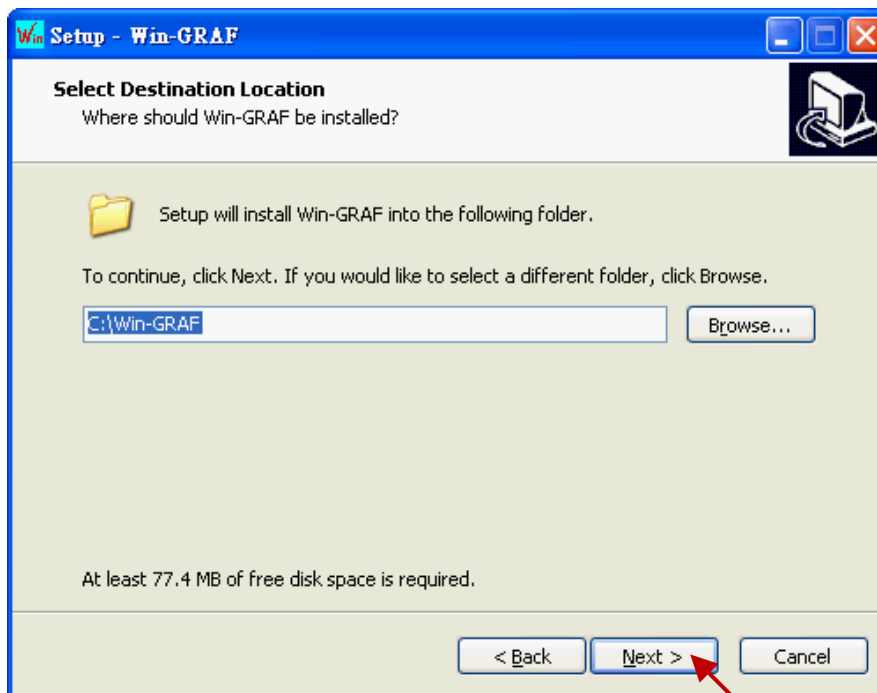


|                |                          |         |       |      |           |      |       |
|----------------|--------------------------|---------|-------|------|-----------|------|-------|
| Classification | Win-GRAF English FAQ-001 |         |       |      |           |      |       |
| Author         | Janice Hong              | Version | 1.0.0 | Date | Oct. 2015 | Page | 2 / 7 |

3. Select “I accept the agreement”, and then click “Next” to continue.

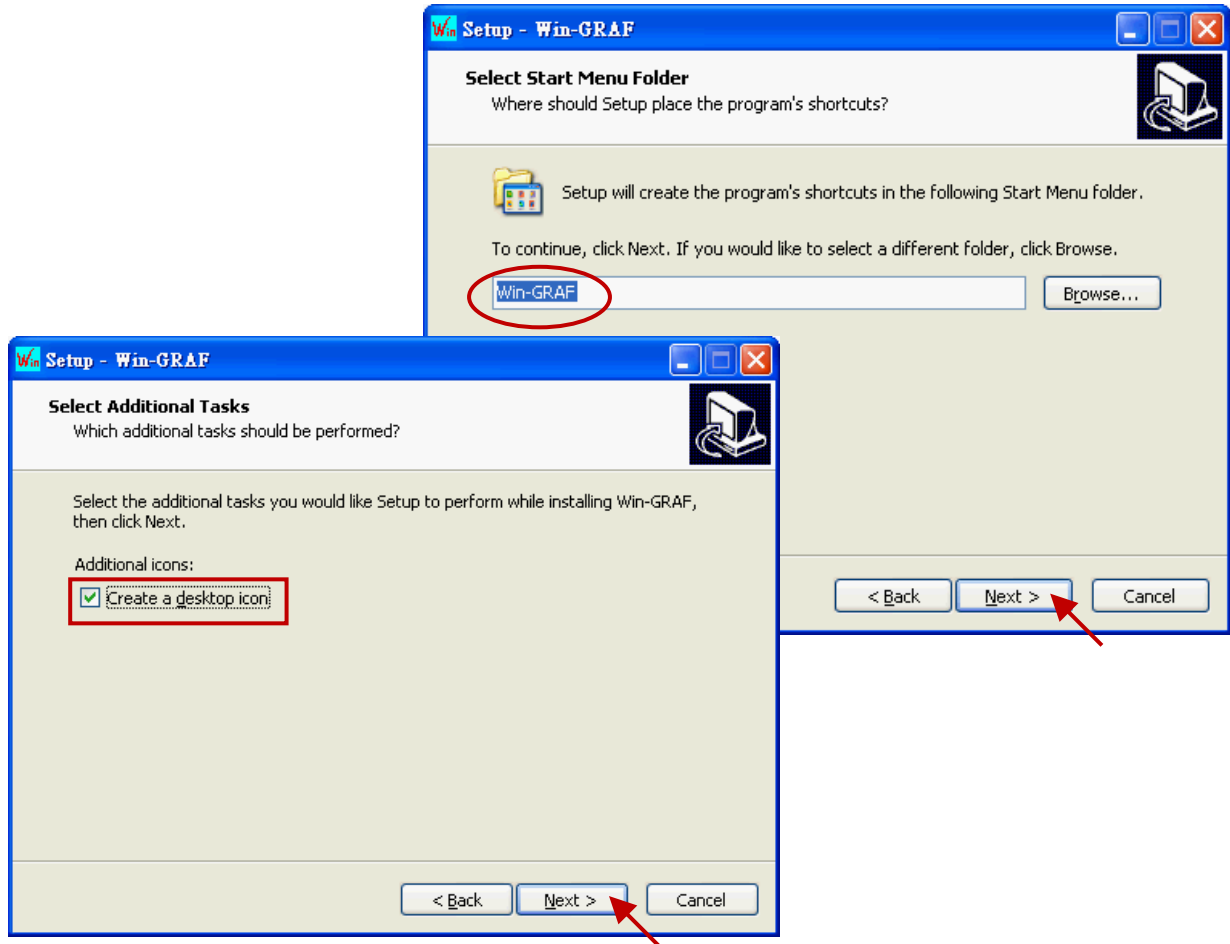


4. Recommend to use the default installation path (i.e., “C:\Win-GRAF”) and then click “Next” to continue.

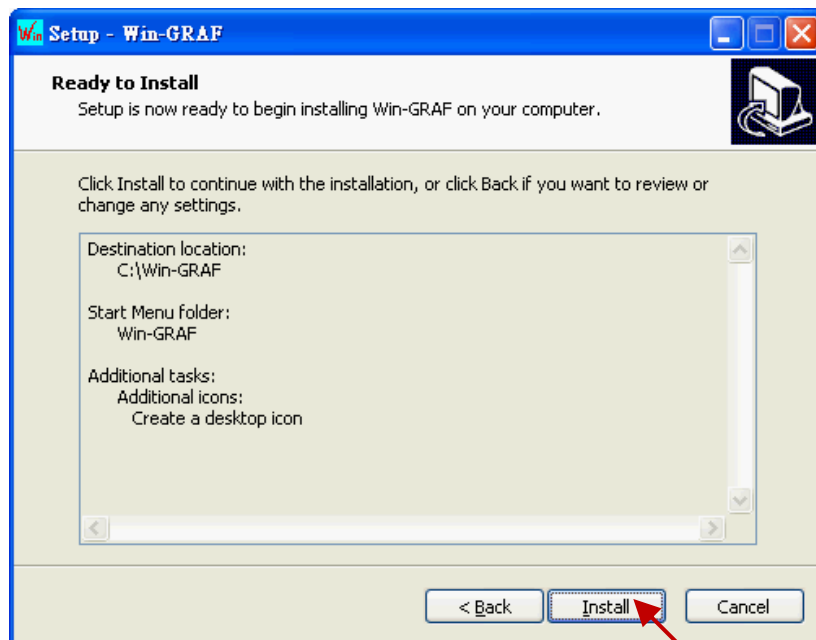


|                |                          |         |       |      |           |      |       |  |
|----------------|--------------------------|---------|-------|------|-----------|------|-------|--|
| Classification | Win-GRAF English FAQ-001 |         |       |      |           |      |       |  |
| Author         | Janice Hong              | Version | 1.0.0 | Date | Oct. 2015 | Page | 3 / 7 |  |

- Click "Next" to add a "Win-GRAF" folder shortcut in the "Start" menu. Select "Create a desktop icon" to add a desktop shortcut, and click "Next" to continue.

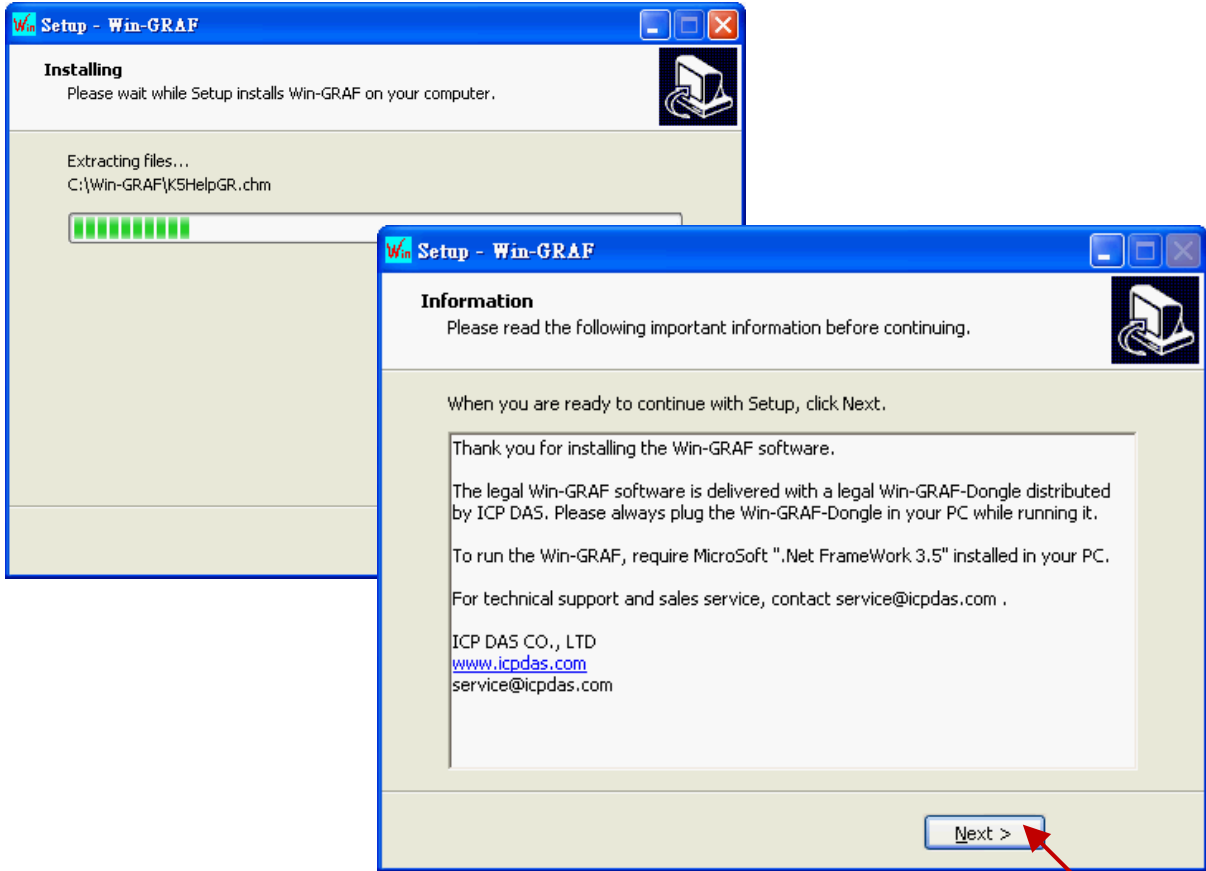


- Click "Install" to start the Win-GRAF Workbench installation.

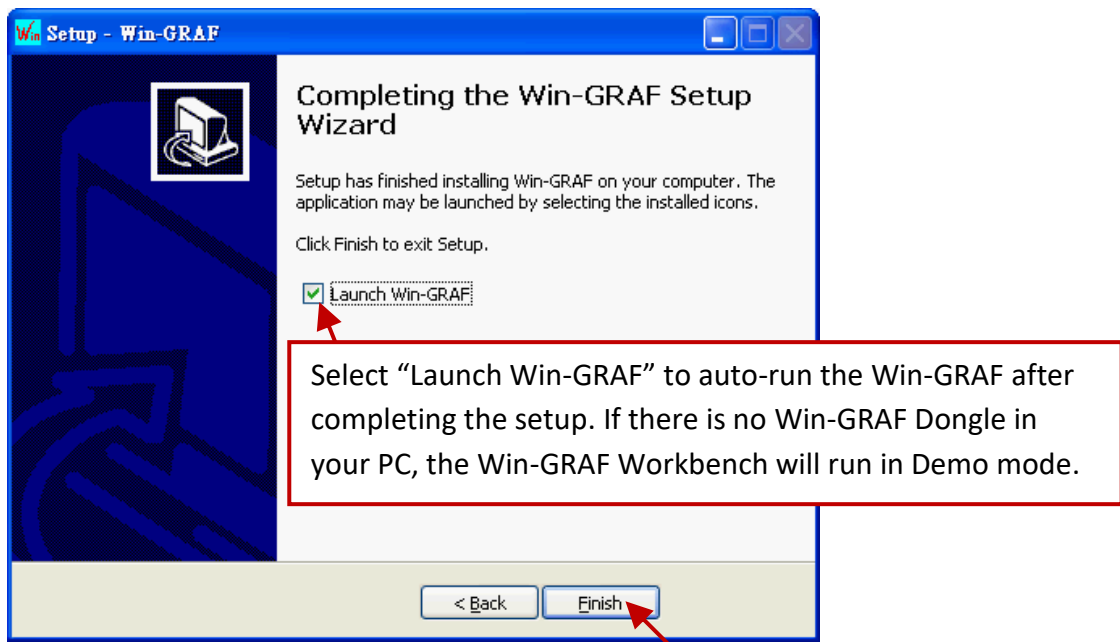


|                |                          |         |       |      |           |      |       |
|----------------|--------------------------|---------|-------|------|-----------|------|-------|
| Classification | Win-GRAF English FAQ-001 |         |       |      |           |      |       |
| Author         | Janice Hong              | Version | 1.0.0 | Date | Oct. 2015 | Page | 4 / 7 |

7. Before the end of the installation, you will see a pop up window and it displays:
  - a. The legal Win-GRAF Workbench is delivered with a legal Win-GRAF Dongle distributed by ICP DAS. Please always plug the Win-GRAF Dongle in your PC while running it.
  - b. To run the Win-GRAF, require Microsoft “.Net FrameWork 3.5” installed in your PC.



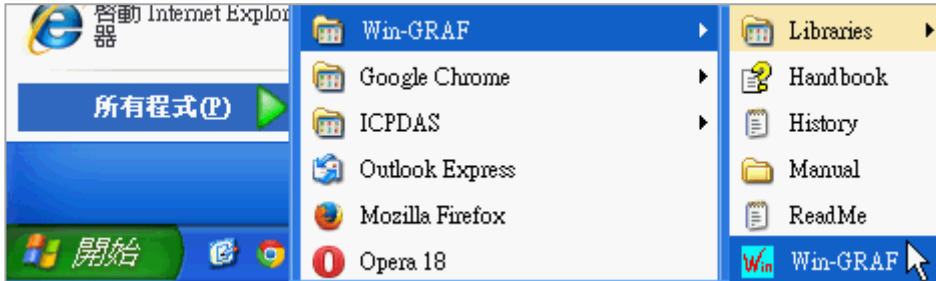
8. By now, you have completed the Win-GRAF installation, then click “Finish” to exit this window.



|                |                          |         |       |      |           |      |       |
|----------------|--------------------------|---------|-------|------|-----------|------|-------|
| Classification | Win-GRAF English FAQ-001 |         |       |      |           |      |       |
| Author         | Janice Hong              | Version | 1.0.0 | Date | Oct. 2015 | Page | 5 / 7 |

## 1.2. Run the Win-GRAF Workbench

Before running the Win-GRAF Workbench, make sure the Win-GRAF Dongle is plugged into your PC. Without using a Win-GRAF Dongle, the Win-GRAF Workbench will run in Demo Mode. Open the Windows Start menu, click on “Win-GRAF” folder and then “Win-GRAF” to open this software.



### Description of the “Win-GRAF” folder:

#### Libraries:

For users to create their own function or modify an exist function.

#### Handbook:

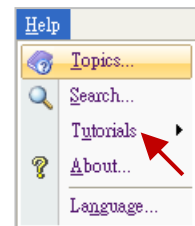
The manual details the software interface, programming environment, programming languages, and so on, provided by COPALP. (Or click the [Help] > [Topics] from the Win-GRAF menu bar)

#### History:

The modification history and features added of the Win-GRAF Workbench.

#### Manual:

The ICP DAS Win-GRAF user’s manual. (Or click the [Help] > [Tutorials] from the Win-GRAF menu bar, the manual is located in the path “C:\Win-GRAF\Tutorials”)



#### ReadMe:

The notice about the Win-GRAF Workbench.

### 1.2.1. Win-GRAF Operating Mode

The Win-GRAF Workbench provides two operating modes:

#### “Demo Mode”:

Without using a Win-GRAF Dongle. The compiled Win-GRAF project can run for 15 minutes in the PAC. Once the time limit has expired, users must Stop/Start this project again and it only supports up to 40 I/O tags.

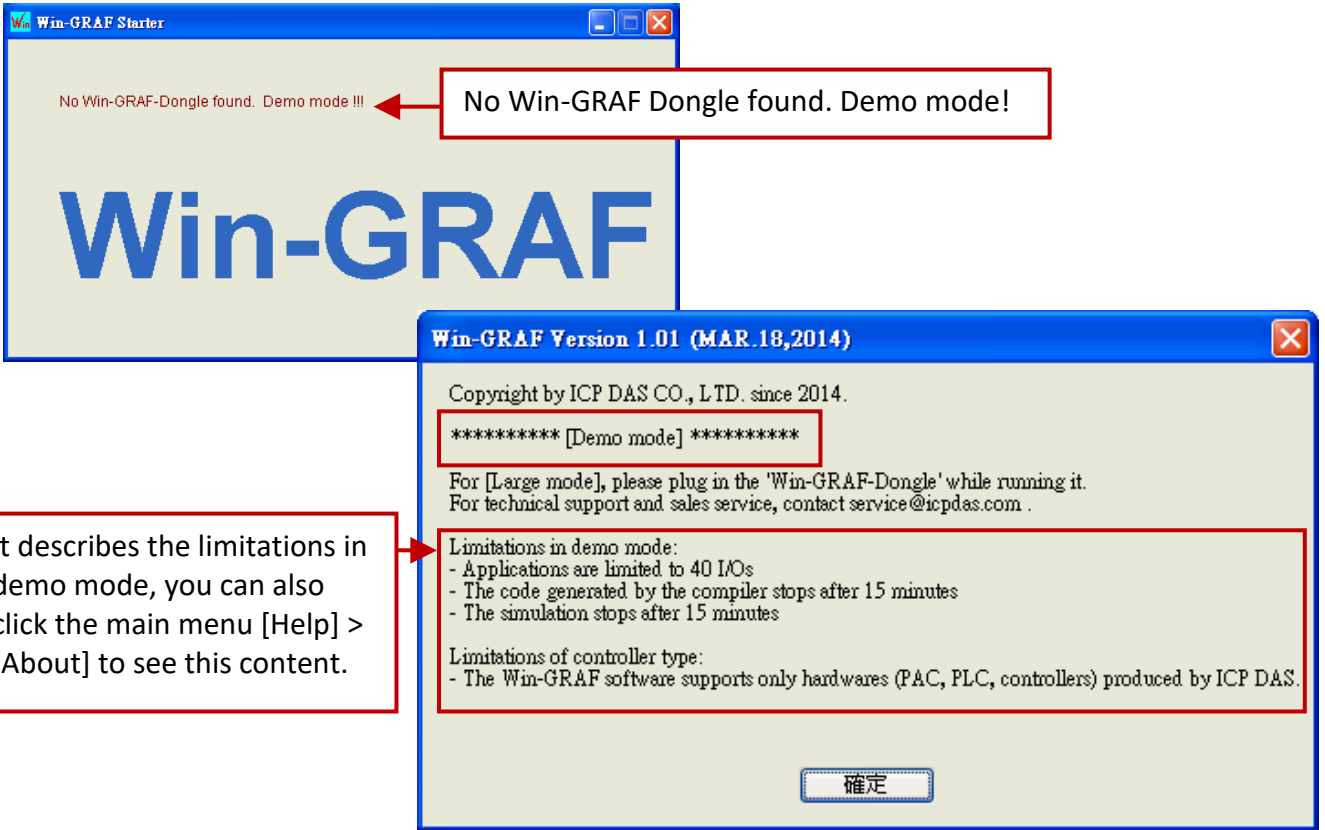
#### “Large Mode”:

Using a Win-GRAF Dongle. The project can run in the PAC without the time limit.

|                |                          |         |       |      |           |      |       |
|----------------|--------------------------|---------|-------|------|-----------|------|-------|
| Classification | Win-GRAF English FAQ-001 |         |       |      |           |      |       |
| Author         | Janice Hong              | Version | 1.0.0 | Date | Oct. 2015 | Page | 6 / 7 |

**Demo Mode** - Without using a Win-GRAF Dongle.

The start screen will show as below after running the Win-GRAF Workbench.



**Note:** If you install the Win-GRAF Dongle in the Demo Mode, you must close Win-GRAF Workbench and then start it again to make it become Large Mode.

**Large Mode** - Using a Win-GRAF Dongle.

The start screen will show as below after running the Win-GRAF Workbench.

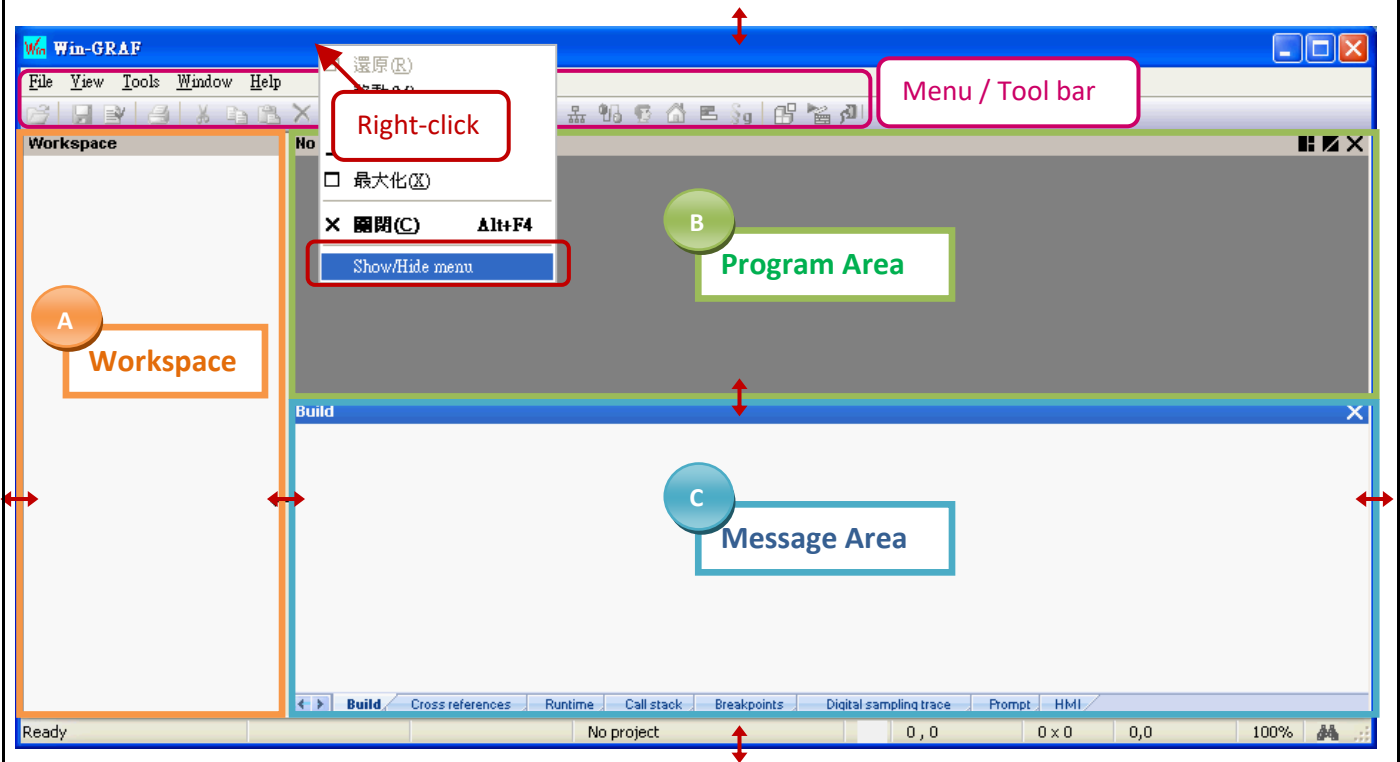


|                |                          |         |       |      |           |      |       |
|----------------|--------------------------|---------|-------|------|-----------|------|-------|
| Classification | Win-GRAF English FAQ-001 |         |       |      |           |      |       |
| Author         | Janice Hong              | Version | 1.0.0 | Date | Oct. 2015 | Page | 7 / 7 |

### 1.2.2. Win-GRAF Operating Environment

Run the Win-GRAF Workbench, and then its main screen will be shown as below:

(Note: Mouse right-click on the top of the Window to Show/Hide the menu bar.)



#### A. The Workspace:

It allows users to create project lists, and add/open the Win-GRAF program as well as the related settings. Moreover, the new project can be created with a project template.

#### B. The Program Area:

It used to show/edit the program and can be divided into more function area.

(Refer the [Win-GRAF Getting Started Manual](#))

#### C. The Message Area:

It used to show compiler messages and provides more diagnostic tools.

#### Tips:

1. To resize a window, click and drag the side or corner of the window to change its size.
2. Press the "F1" key to open the user manual (i.e., HTML Help).

Click the link for more Win-GRAF FAQ:

<https://www.icpdas.com/en/faq/index.php?kind=273#840>