

Classification	ISaGRAF English FAQ-168					
Author	Chun Tsai	Version	1.2	Date	Jul.2014	Page 1 / 4

## How to write an ISaGRAF program to copy/delete all files in one directory ?

This paper lists the way to use “F\_cp\_dir” to copy all files in one directory (excludes files in sub-directories) to one another directory. The following ISaGRAF PAC driver support the “F\_cp\_dir”.

WP-8xx7 : since driver ver. 1.63	WP-5147: since driver ver. 1.09
VP-25W7 / 4137: since driver ver. 1.55	
XP-8xx7-CE6: since driver ver. 1.43	XP-8xx7-ATIM-CE6 : since driver ver. 1.03

The “F\_de\_dir” can delete all files in one directory (excludes files in sub-directories). The following ISaGRAF PAC driver support the “F\_de\_dir” .

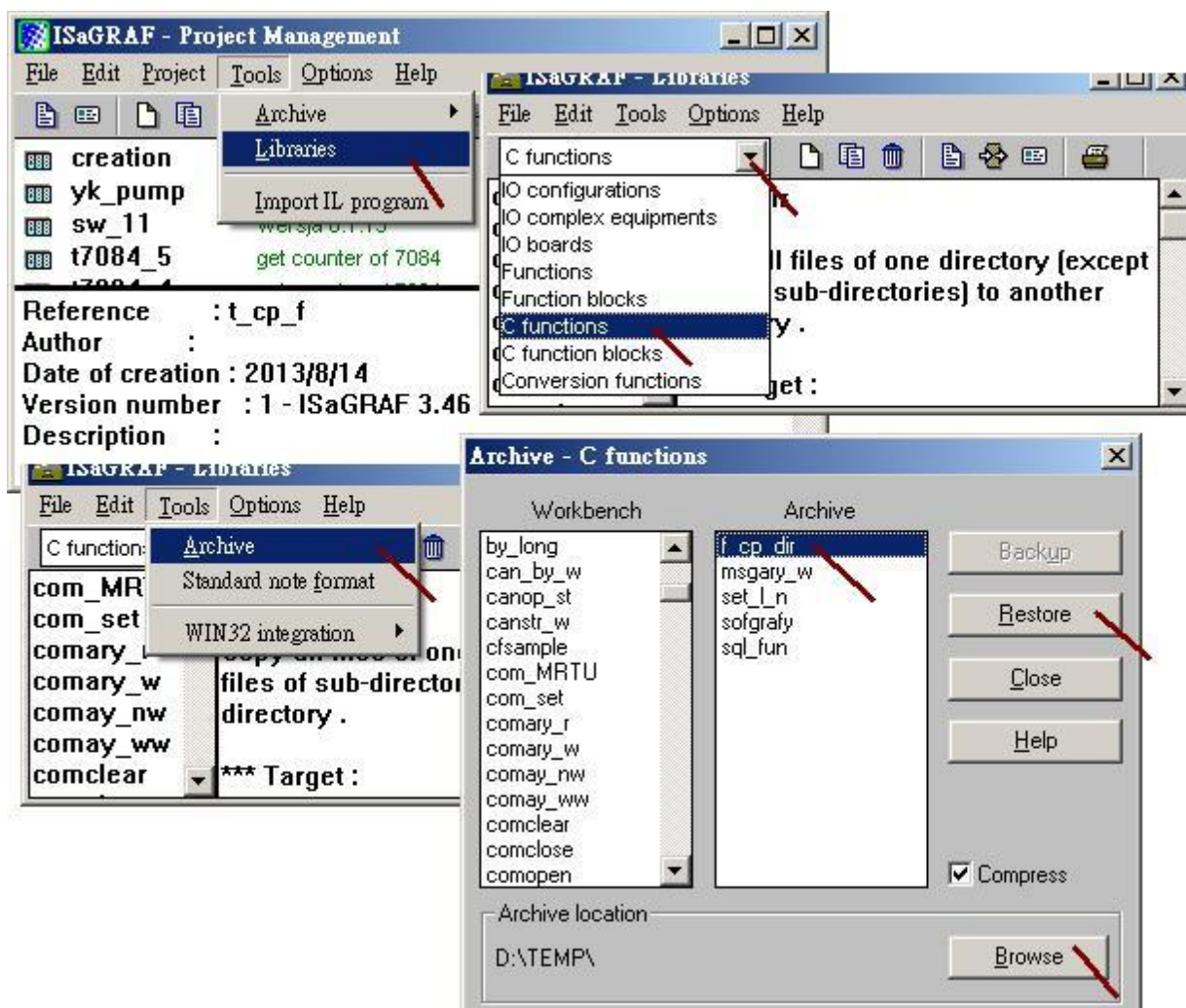
WP-8xx7 : since driver ver. 1.71	WP-5147: since driver ver. 1.16
VP-25W7 / 4137: since driver ver. 1.63	
XP-8xx7-CE6: since driver ver. 1.51	XP-8xx7-ATIM-CE6 : since driver ver. 1.04

If your ISaGRAF driver version of the WinCE PAC is older than above version, please visit <http://www.icpdas.com/en/download/show.php?num=368&nation=US&kind1=&model=&kw=isagraf> to download the newest version and then update it to your PAC.

Please visit <https://www.icpdas.com/en/faq/index.php?kind=280#751> > FAQ-168 to download this paper and its demo program and lib - “faq168\_demo.zip” . It includes three files - “faq168.pdf” , “f\_cp\_dir.uia” , “f\_de\_dir.uia” and “cp\_dir.pia” .

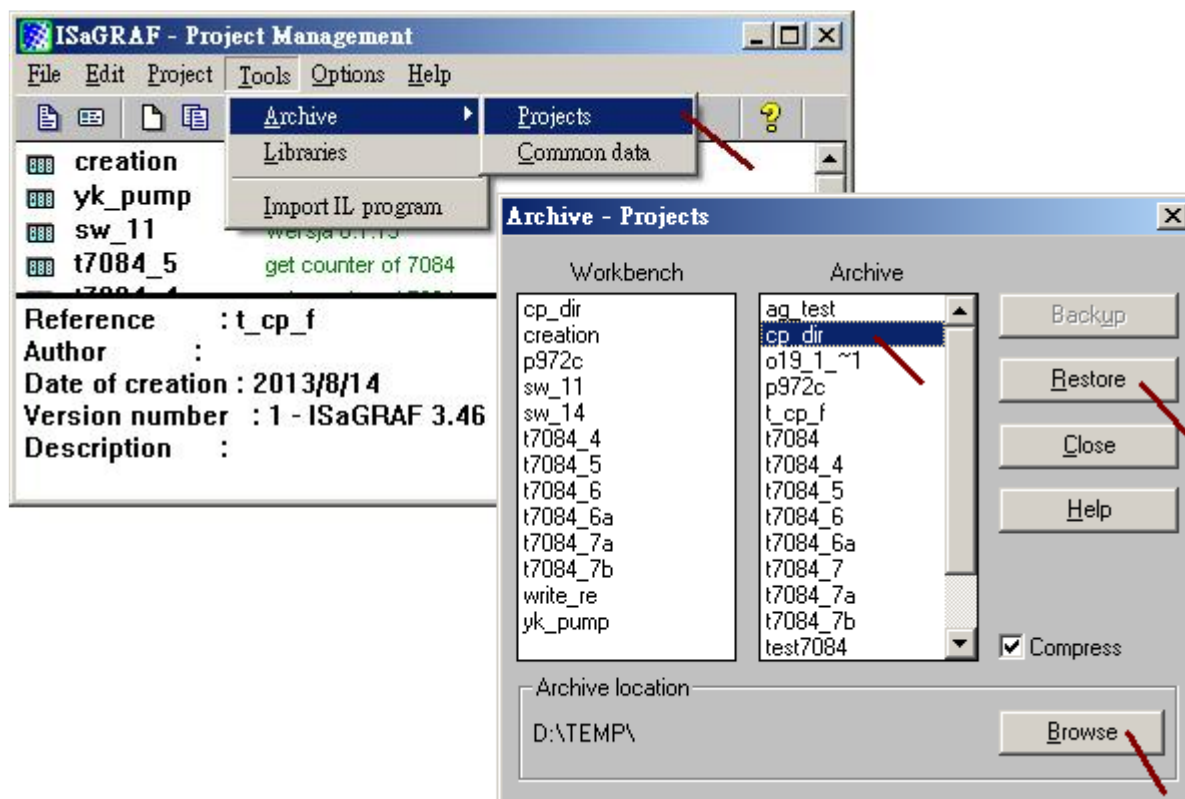
Classification	ISaGRAF English FAQ-168						
Author	Chun Tsai	Version	1.2	Date	Jul.2014	Page	2 / 4

First restore c-function “F\_cp\_dir.uis” and “F\_de\_dir” to the PC / ISaGRAF before you can use it.



Classification	ISaGRAF English FAQ-168						
Author	Chun Tsai	Version	1.2	Date	Jul.2014	Page	3 / 4

Then restore the example project “cp\_dir.pia” to the PC / ISaGRAF .



The way to use the “F\_cp\_dir” is similar as the following code.

```
(* Copy_it and TMP are declared as Boolean / Internal variable .
   Set “Copy_it” to TRUE will copy the directory*)
if Copy_it then
  Copy_it := FALSE ;
  (* Copy all files in“\Temp\Dir2”(except files in sub-directories) to“\Temp\dir3” *)
  TMP := F_cp_dir( '\Temp\Dir2' , '\Temp\dir3' ) ;
end_if ;
```

Note:

1. Correct directory name : for example, '\Temp\Dir2' , '\Temp\Dir3'  
Wrong directory name : for example, '\Temp\Dir2\' , '/Temp/Dir3'
2. files in sub-directories are not copied.
3. Using the "F\_cp\_dir" may cause the PAC cycle time increase a lot if the file amount is big or file size is large in the source directory. So don't call “F\_cp\_dir” frequently..
4. Please visit the following web for more information about file Read / Write operations.  
<https://www.icpdas.com/en/faq/index.php?kind=280#751> > FAQ-060 .

Classification	ISaGRAF English FAQ-168						
Author	Chun Tsai	Version	1.2	Date	Jul.2014	Page	4 / 4

The way to use the "F\_de\_dir" is similar as the following code

```
(* Del_it and TMP are declared as Boolean / Internal variable .
Set "Del_it" to TRUE will copy the directory*)
if Del_it then
  Del := FALSE ;
  (* Delete all files in"\Temp\dir3"(excludes files in sub-directories)  *)
  TMP := F_de_dir( '\Temp\dir3' ) ;
end_if ;
```

Note:

1. Correct directory name : for example, '\Temp\dir3'  
Wrong directory name : for example, '\Temp\dir3\' , '/Temp/dir3'
2. files in sub-directories are not deleted.
3. Using the "F\_de\_dir" may cause the PAC cycle time increase a lot if the file amount is big or file size is large in the source directory. So don't call "F\_de\_dir" frequently..
4. Please visit the following web for more information about file Read / Write operations. The way to use the "F\_de\_dir" is similar as the following code  
<https://www.icpdas.com/en/faq/index.php?kind=280#751> > FAQ-060 .