

Classification	ISaGRAF FAQ-121						
Author	Grady Dun	Version	1.0.0	Date	Apr. 2010	Page	1 / 9

How to install or remove the ISaGRAF development platform properly

For ICP DAS ISaGRAF PACs and the ISaGRAF Workbench software to operate properly, it is imperative that everything is setup correctly. This document shows the details of how to setup the controller system and the ISaGRAF Workbench software promptly.

Hardware Requirements

- A PC with a Pentium, 133 MHz or Faster Processor
- 32MBytes Memory (Preferably 64MBytes RAM)
- A Hard Drive with 128Mbytes (or more) of Storage
- One RS-232 Serial Port

Software Requirements

One of the following computer operating systems must be installed in the target computer before you install the ISaGRAF Workbench software program.

- Windows 95
- Windows 98
- Windows NT Version 3.51 or Windows NT Version 4.0
- Windows 2000 or Windows XP
- Windows Vista

The steps as follows:

- I. Set up the ISaGRAF develop platform
 1. Install the ISaGRAF Workbench program
 2. Install the ICP DAS Utilities For ISaGRAF program
- II. Remove the ISaGRAF develop platform

I. Set up the ISaGRAF develop platform

1. Install the ISaGRAF Workbench program

Download the Workbench Program from website:

<https://www.icpdas.com/en/download/show.php?num=1240&nation=US&kind1=&model=&kw=ISaGRAF>

[※Since 2015, ICP DAS do not provide CD-ROM in the delivery package anymore]

Insert the ISaGRAF Workbench CD into your CD-ROM drive. Normally the auto-start program will activate the "install.bat" file automatically.

If your computer does not have the auto-start feature active, use the Browser and go to the CD-ROM drive where the Workbench CD is installed, then double-click on the "install.bat" file listed on the ISaGRAF CD. If the "install.bat" file is not found on your ISaGRAF CD, then double-click on the "ISaGRAF.exe" file to start the installation process. Once you have started the "install.bat" file, a dialog box will appear as shown as the Figure 1. Select the language version of the ISaGRAF software program you would like to use. English is used in all subjects and examples throughout this manual.

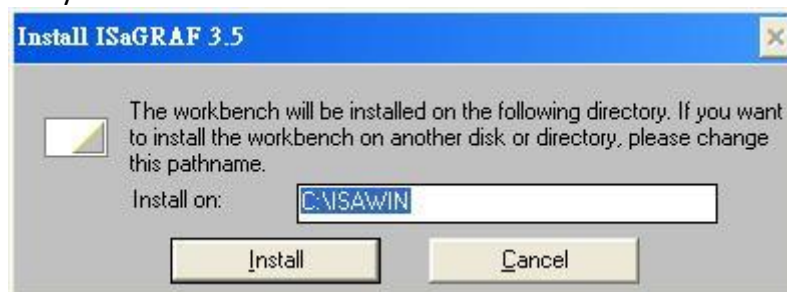
Classification	ISaGRAF FAQ-121						
Author	Grady Dun	Version	1.0.0	Date	Apr. 2010	Page	2 / 9

Figure1:

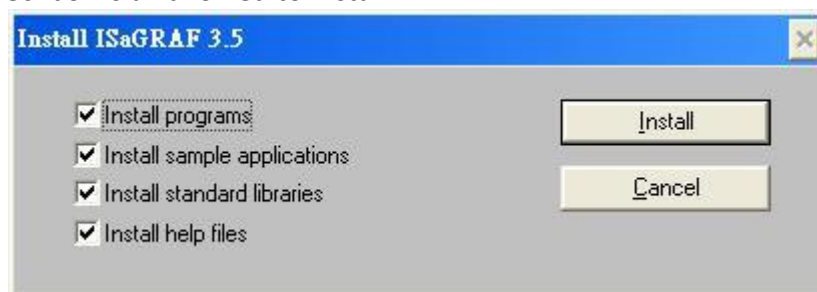


Once you have selected to install the ISaGRAF Workbench program and selected the desired language, just press the "Install" button, and follow the step-by-step directions of each dialog box as they appear to complete the installation process. The first dialog box to appear allows users to define what drive and subdirectory the ISaGRAF program will install into.

- Type the path that you want to install ISaGRAF workbench.

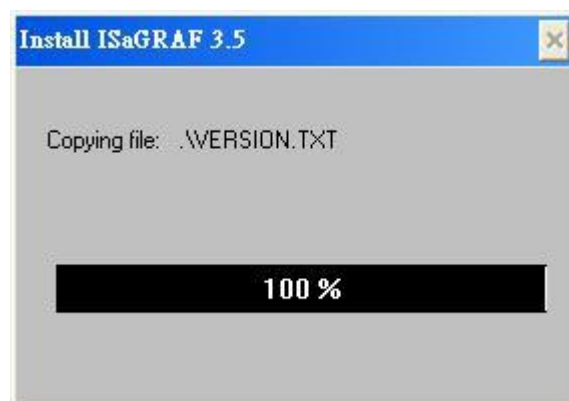


- The next dialog box asks the user how many ISaGRAF program you'd like to install. By default, checkbox is all allowed to install.

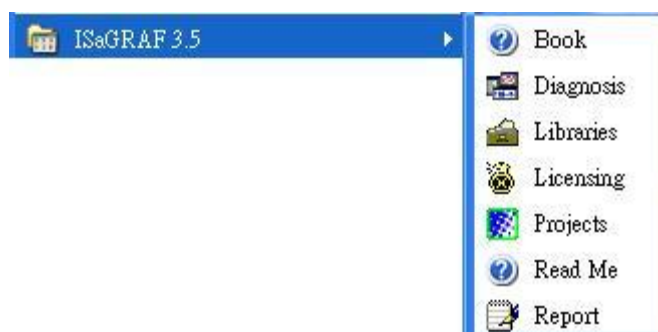


- Once you have selected programs and applications to be installed, the installation begins, and a dialog box will show the installation progress.

Classification	ISaGRAF FAQ-121						
Author	Grady Dun	Version	1.0.0	Date	Apr. 2010	Page	3 / 9



- Once the ISaGRAF Workbench software installation is completed, a Browser window will appear and to show the program.



- If your ISaGRAF Key-Pro is USB type, please follow below steps to install the proper USB driver.
 - a) To make your PC recognize the ISaGRAF USB protection-key, please **unplug** the USB protection-key from your USB port first, then run "**\Sentinel\SSD5411-32bit.exe**" in the ISaGRAF 3.55 after you have installed. Then please restart your PC.
 - b) To run ISaGRAF Ver. 3.5x, please always insert the USB protection-key in the PC USB port.

NOTE: You must install the hardware protection device (dongle) provided with the ISaGRAF software on your computers parallel port to allow the ISaGRAF program to achieve fully authorized functions. (Not for the ISaGRAF-32 which doesn't have the dongle.)

While using ISaGRAF and the dongle is inserted, if the "Help" – "About" says "Maximum number of IO variables: 32", it means ISaGRAF workbench cannot find the dongle. Please restart your PC and then check the "Help" – "About" again. If it still displays "Maximum number of IO variables: 32", the dongle driver may not be installed well. Please execute the following ISaGRAF programs

\Sentinel5382\setup.exe for ISaGRAF-80

or \Sentinel\setup.exe for other ISaGRAF version (except ISaGRAF-32)

or follow the former section if your protection-key is USB type.

and then restart the PC again.

Important Notice for Window Vista Users

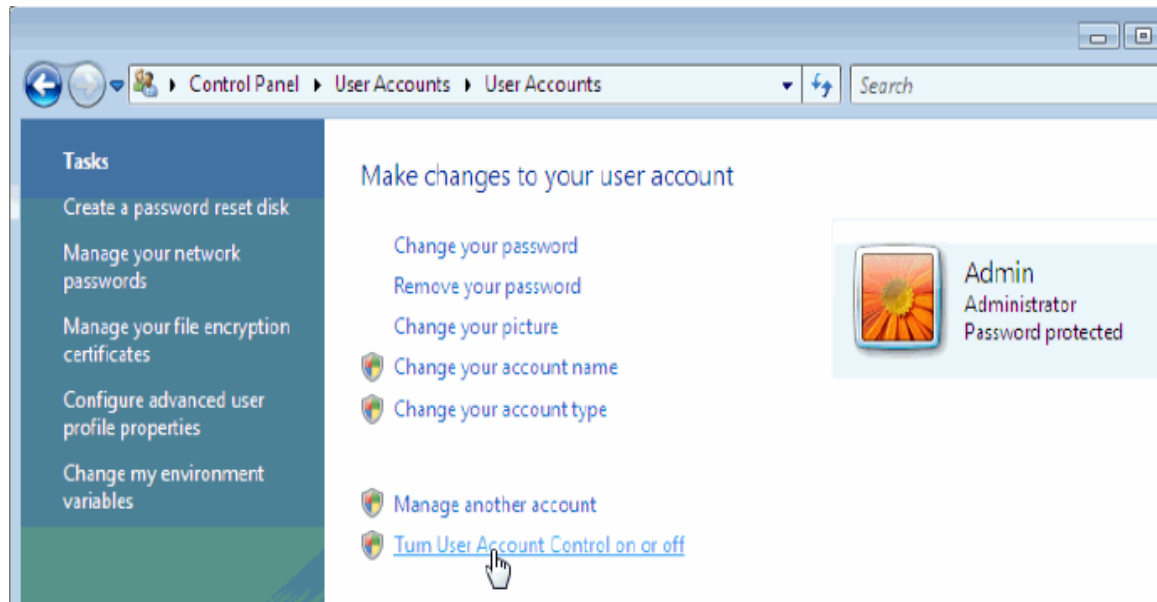
Because of windows Vista's User Account Control, will lead to ISaGRAF 3.x implementation of the exception. So **DISABLE** the User Account Control before installing the ISaGRAF Workbench.

Classification	ISaGRAF FAQ-121						
Author	Grady Dun	Version	1.0.0	Date	Apr. 2010	Page	4 / 9

How to disable the User Account Control

NOTE: the following operation **Only** the administrator can do that

1. From the **"Start"** menu, choose **"Control Panel"**, then **"User Accounts"**, then **"User Accounts"**, then click **"Turn User Account Control on or off"**.



2. Click **"Continue"** on the pop-up **"UAC"** dialog.
3. Don't check the **"Use User Account Control(UAC) to help you protect your computer"** option, then click the **"OK"** button



4. Restart your computer once.
5. Install the ISaGRAF Workbench with above the method.

Important Notice for Window NT Users

If your computer is using the Windows NT operating system, you will need to add one line to the "isa.ini" file in the ISaGRAF Workbench "EXE" subdirectory. The default path of installing ISaGRAF program is

Classification	ISaGRAF FAQ-121						
Author	Grady Dun	Version	1.0.0	Date	Apr. 2010	Page	5 / 9

C:\isawin\exe\isa.ini.

You can use any ASCII based text editor (such as Notepad or UltraEdit32) to open the "isa.ini" file. Locate the [WS001] header in the "isa.ini" initialization file (it should be at the top of the file). Anywhere within the [WS001] header portion of the "isa.ini" initialization file, add the entry shown below within the [WS001] header:

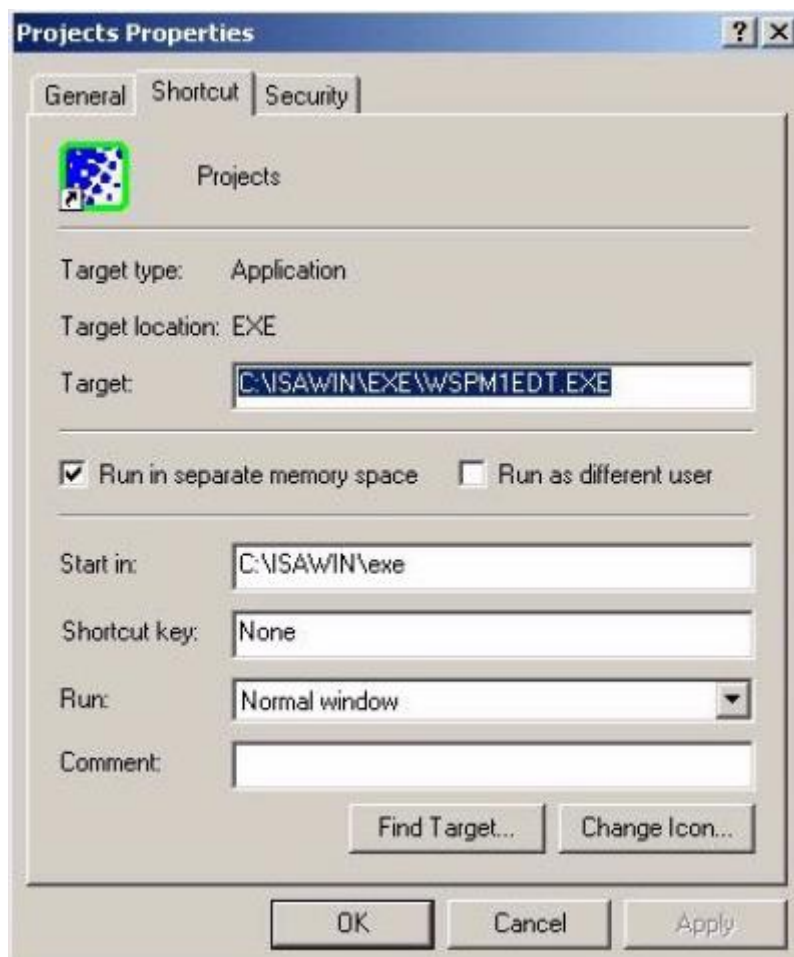
[WS001]

NT=1

Isa=C:\ISAWIN

The [WS001] header should now look like the above example. The **NT=1** entry addition is absolutely required for the RS-232 communications to operate properly in the Windows NT operating environment.

When closing the ISaGRAF window on windows 2000, it sometimes holds (No response). You may create a short cut for the "ISaGRAF project manager. And then check on "run in separate memory space" option in the shortcut property.



Classification	ISaGRAF FAQ-121						
Author	Grady Dun	Version	1.0.0	Date	Apr. 2010	Page	6 / 9

2. Install the ICP DAS Utilities for ISaGRAF program

The “ICP DAS Utilities for ISaGRAF” consists of 4 major items.

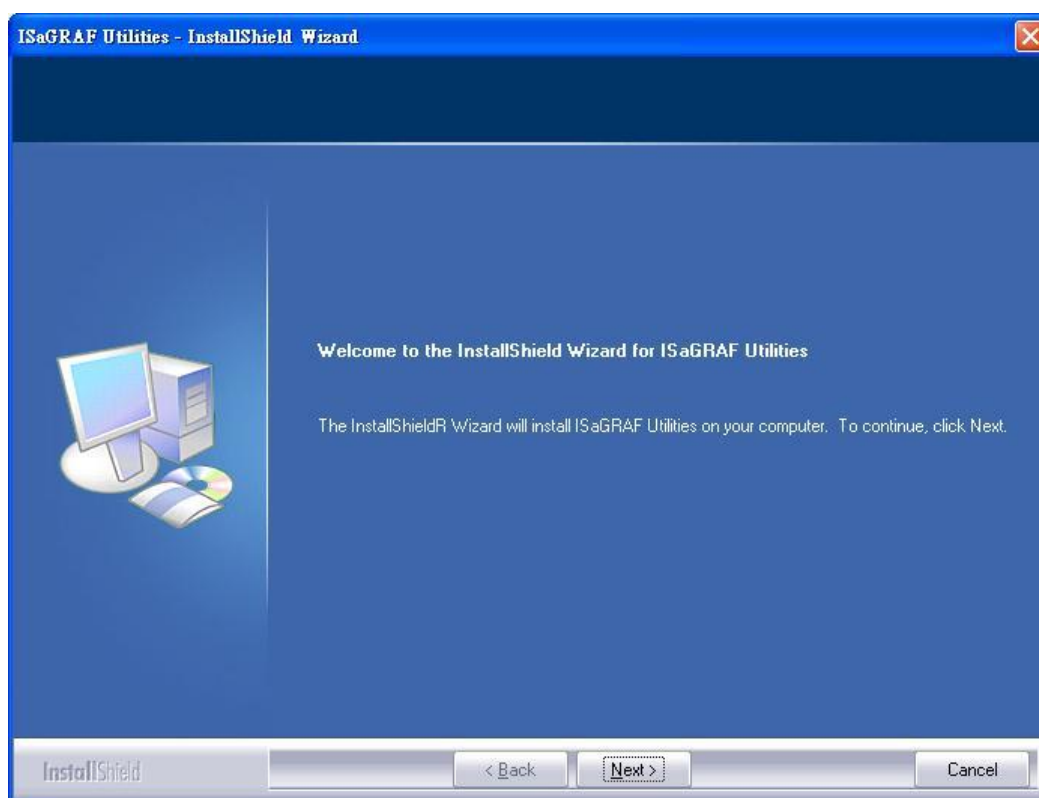
- I/O library definition
- Modem_Link utility
- Auto-scan I/O utility
- ICPDAS Uloader

Please download the Utility from website:

<http://www.icpdas.com/en/download/show.php?num=368&nation=US&kind1=&model=&kw=isagraf>

Then run “setup.exe” in the folder. Follow Setup Wizard's guide to install it as the Figure 2.

Figure 2:



Note:

If “setup.exe” is not in your CD-ROM, please download “ICP DAS Utilities for ISaGRAF” from website:

<https://www.icpdas.com/en/download/file.php?num=962>

If you change the path of installing the ISaGRAF Workbench, redirect the path of installing the ICP DAS Utilities for ISaGRAF to the path that contains the ISaGRAF Workbench.

Classification	ISaGRAF FAQ-121						
Author	Grady Dun	Version	1.0.0	Date	Apr. 2010	Page	7 / 9

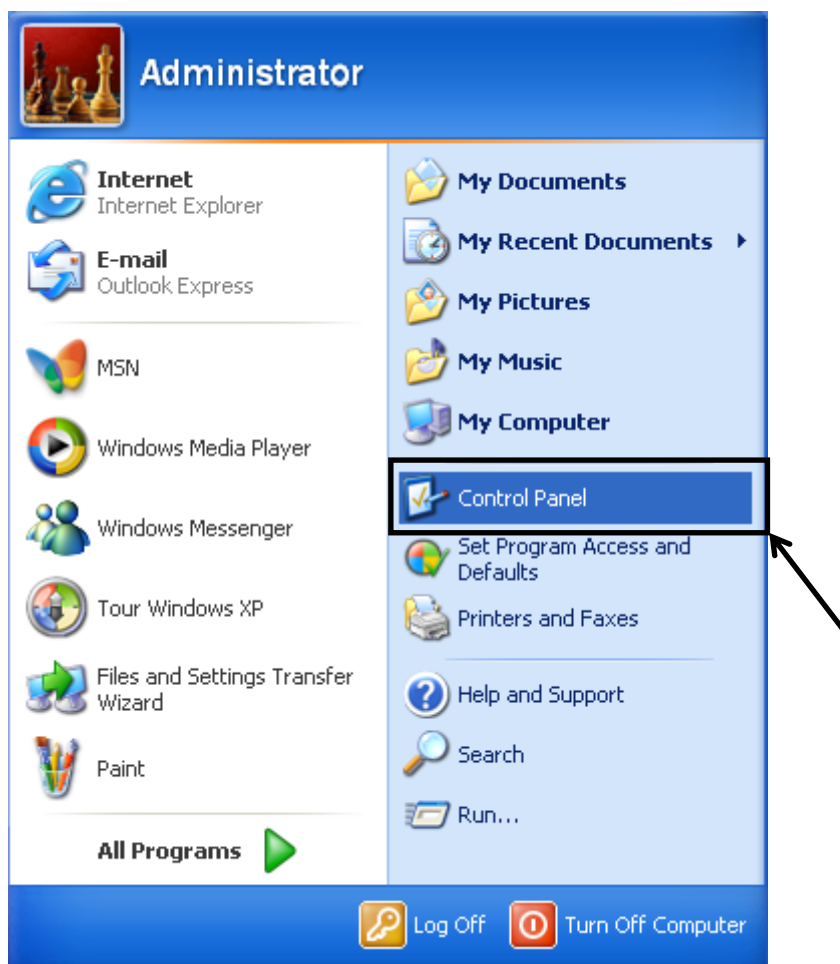
I. Remove the ISaGRAF development platform

The main steps as follows

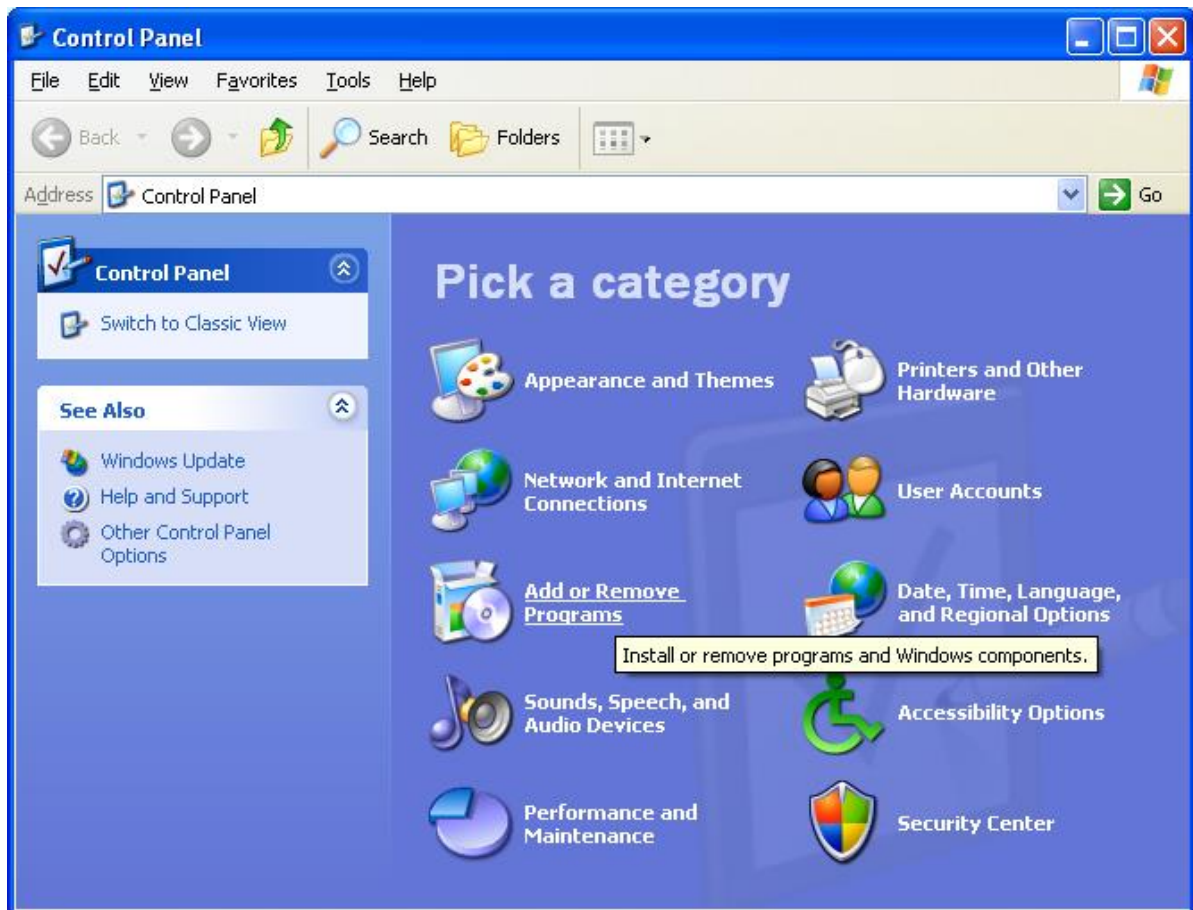
1. Remove the ICP DAS Utilities For ISaGRAF
2. Delete the folder that contains ISaGRAF Workbench

3. Remove the ICP DAS Utilities For ISaGRAF

From the “Start” menu, select “Control Panel”

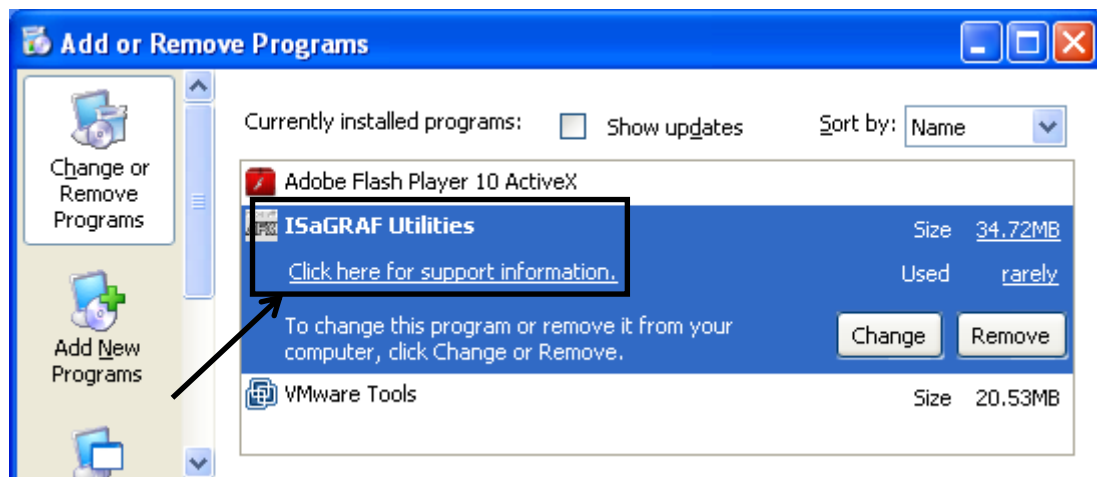


Classification	ISaGRAF FAQ-121						
Author	Grady Dun	Version	1.0.0	Date	Apr. 2010	Page	8 / 9



Click the “Add or Remove Program” icon

Select the program “ISaGRAF Utilities” to remove and click Remove



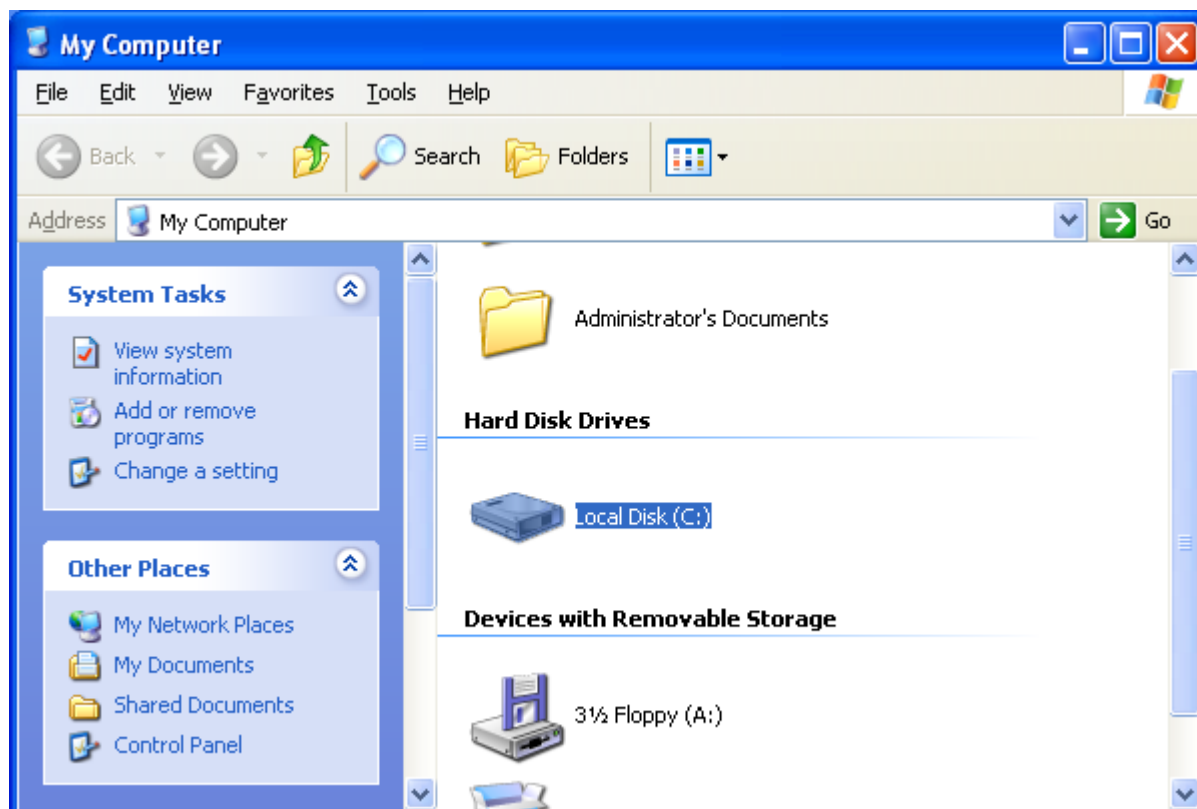
4. Delete the folder that contains the ISaGRAF Workbench

Important note:

Classification	ISaGRAF FAQ-121						
Author	Grady Dun	Version	1.0.0	Date	Apr. 2010	Page	9 / 9

Please backup your project files before remove if you want to keep them.

Click “My computer” on the desktop and click “Local Disk (C:)”



Delete the folder “ISAWIN” (the default path of installing ISaGRAF Workbench is C:\ISAWIN\)

