

Classification	ISaGRAF FAQ-101						
Author	Chun Tsai	Version	1.0.0	Date	Mar. 2007	Page	1 / 5

## **How to read max. 120 Words or max. 60 Long-Integers or max. 60 Real value from Modbus RTU/ ASCII devices by using MBUS\_XR or MBUS\_XR1 function block (for WP-8xx7/ 8xx6 and VP-25W7/23W7/25W6/23W6 and Wincon-8xx7/ 8xx6 and XP-8xx7-CE6)?**

[Download FAQ-101 Demo](#)

Please refer to more information about connecting Modbus RTU Slave (or Modbus ASCII Slave) in the chapter 8 of “ ISaGRAF User's Manual “ or “ User\_Manual\_I\_8xx7.pdf “ at

<http://www.icpdas.com/en/download/show.php?num=333&nation=US&kind1=&model=&kw=isagraf>

The Wincon-8xx7/ 8xx6 ISaGRAF driver since 4.07 version and the WP-8xx7/ 8xx6 and XP-8xx7-CE6 and VP-25W7/23W7/25W6/23W6 since released support “MBUS\_XR” and “MBUS\_XR1”. These two function blocks can read max. 120 Words (-32768 ~ +32767) or max. 60 Long-integers (-2,147,483,648 ~ +2,147,483,647) or max. 60 floating point values (32-bit IEEE format) at once from Modbus RTU slave devices. While only max. 60 Word or 30 Long-integers or 30 floating point values for Modbus ASCII devices.

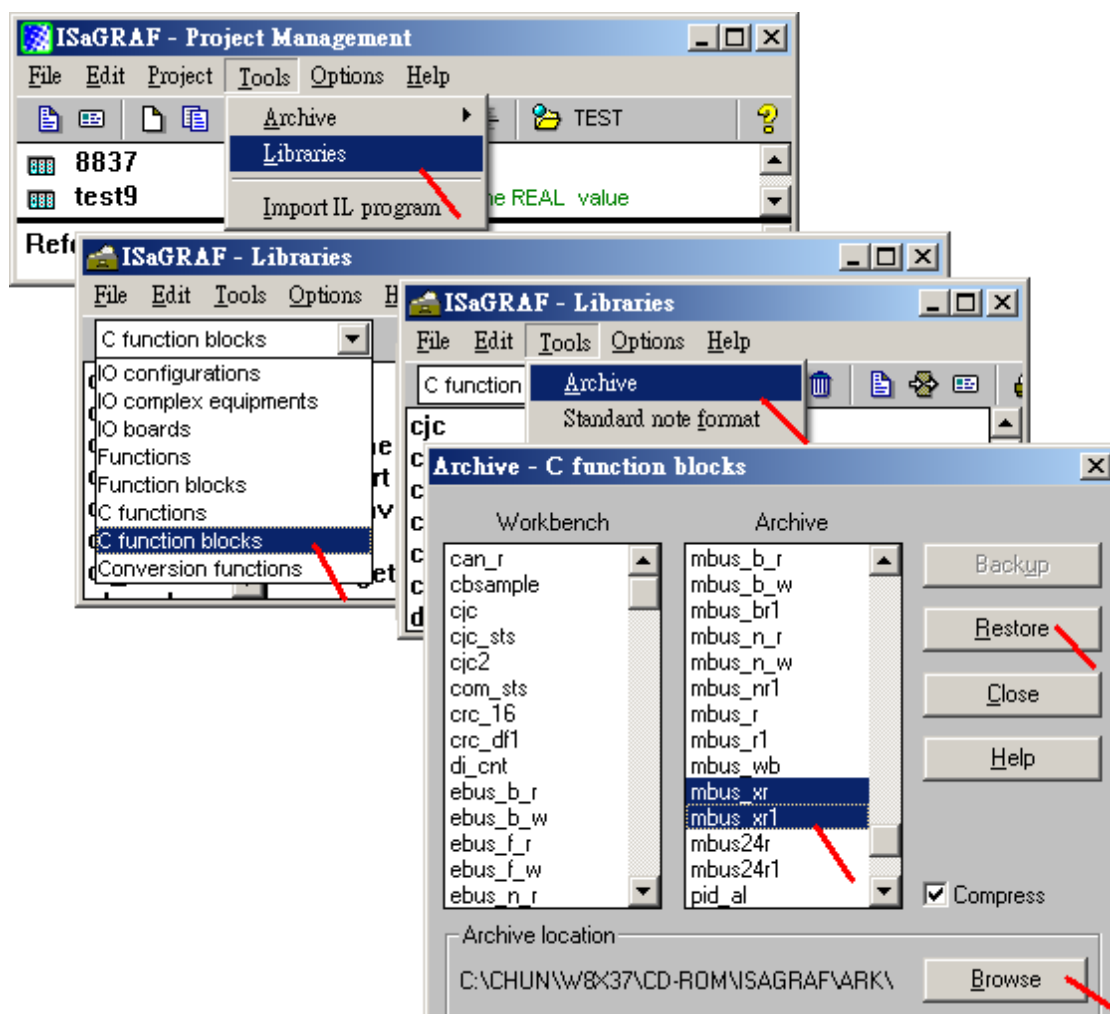
Recent ISaGRAF driver is at

<http://www.icpdas.com/en/download/show.php?num=368&nation=US&kind1=&model=&kw=isagraf>

If your PC/ ISaGRAF find no “MBUS\_XR” and “MBUS\_XR1”, please download them at

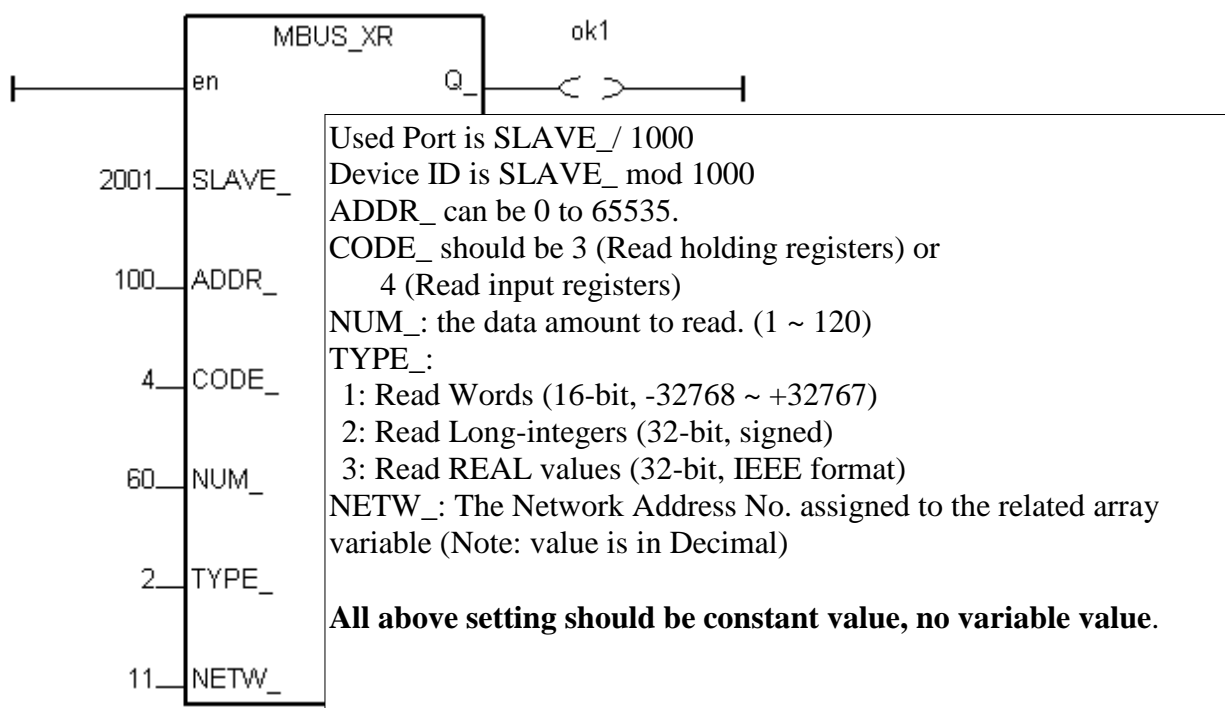
<http://www.icpdas.com/en/faq/index.php?kind=280#751> >FAQ-101 > to get “faq101\_demo.zip” or to get “mbus\_xr.fia” and “mbus\_xr1.fia”. Then restore them to your PC/ ISaGRAF as below.

Classification	ISaGRAF FAQ-101						
Author	Chun Tsai	Version	1.0.0	Date	Mar. 2007	Page	2 / 5



Classification	ISaGRAF FAQ-101						
Author	Chun Tsai	Version	1.0.0	Date	Mar. 2007	Page	3 / 5

The following sample is for reading 60 Long-integers (TYPE\_ = 2) from the device ID 1 via COM2. It reads device Modbus address starting from 100 by using Modbus function call 4 (Read input register). The data will be stored in an ISaGRAF Integer type array variable which assigned with a Network Address "B" (that is 11 in Decimal format).



**Note:**

1. For connecting **Modbus RTU** slave devices, the "MBUS\_XR" and "MBUS\_XR1" can read max. 120 Words or 60 Long-integer or 60 Reals (32-bit IEEE format). While for connecting **Modbus ASCII** slave devices, can only read max. 60 Words or 30 Long-integer or 30 Reals.
2. Please declare the exact correct type for the array variable. The **TYPE\_ = 1 and 2 is for ISaGRAF integer variable**, while **TYPE\_ = 3 is for REAL variable**. And please also specify the correct Network Address number for this array variable (The number specified in the "NETW\_" parameter). And the "Dim" setting should be equal to or larger than the value set in "NUM\_".
3. Please refer to the FAQ-039 or section 2.6.2 of the ISaGRAF user's manual for more information about array variables.
4. One controller can use max. 128 such function blocks. (MBUS\_XR + MBUS\_XR1 <= 128)

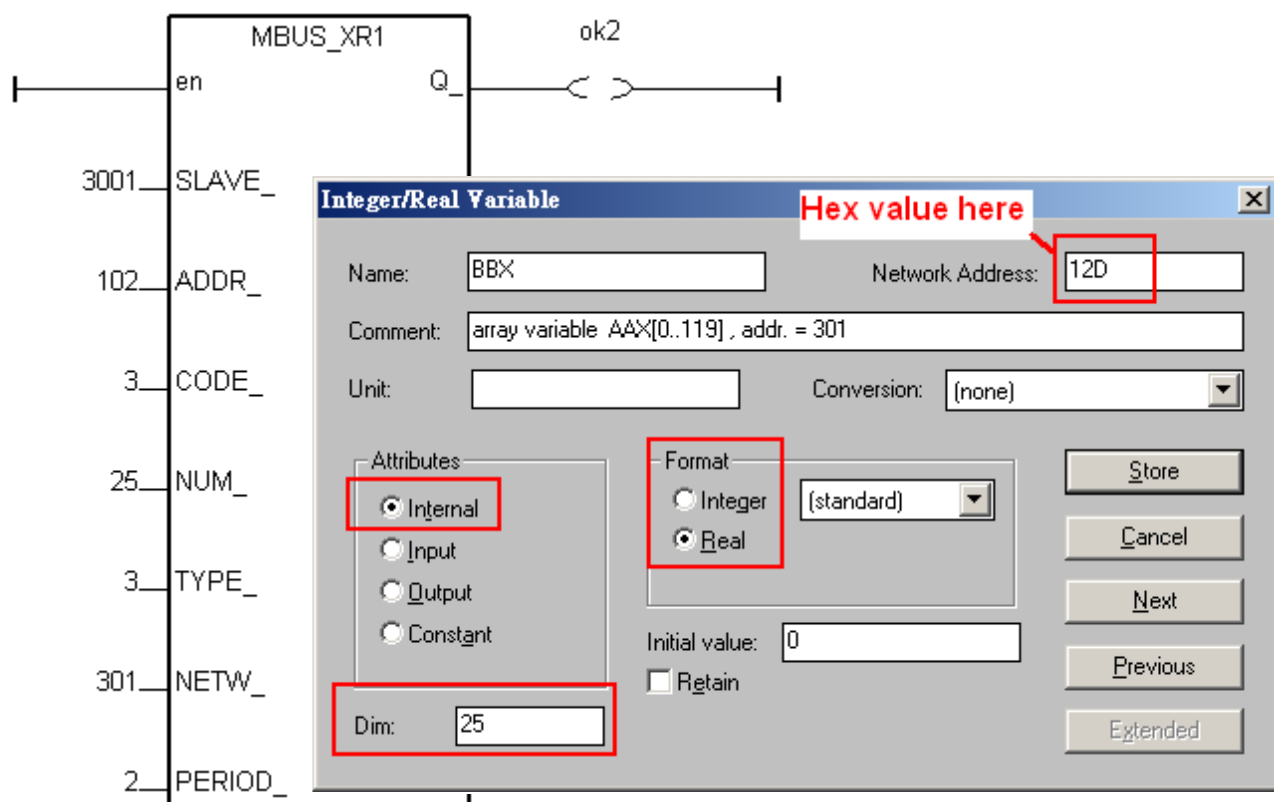
Classification	ISaGRAF FAQ-101						
Author	Chun Tsai	Version	1.0.0	Date	Mar. 2007	Page	4 / 5

Please connect the “mbus” in the ISaGRAF I/O connection window for connecting Modbus RTU slave devices. Then set proper setting for it. (For Modbus ASCII Slave devices, please use “mbus\_asc”). (Please refer to Chapter 8 of the ISaGRAF user's manual for more about “mbus” and “mbus\_asc”)

The following sample is for reading 25 REALs (TYPE\_ = 3) from the device ID 1 via COM3. It reads device Modbus address starting from 102 by using Modbus function call 3 (Read holding registers). The data will be stored in an ISaGRAF REAL type array variable which assigned with a Network Address “12D” (that is 301 in Decimal format)

MBUS\_XR1's “PERIOD\_” defines the interval to read. Unit is second, can be 1 to 600.

Classification	ISaGRAF FAQ-101						
Author	Chun Tsai	Version	1.0.0	Date	Mar. 2007	Page	5 / 5



(Please refer to the FAQ-039 or section 2.6.2 of the ISaGRAF user's manual for more information about array variables)