

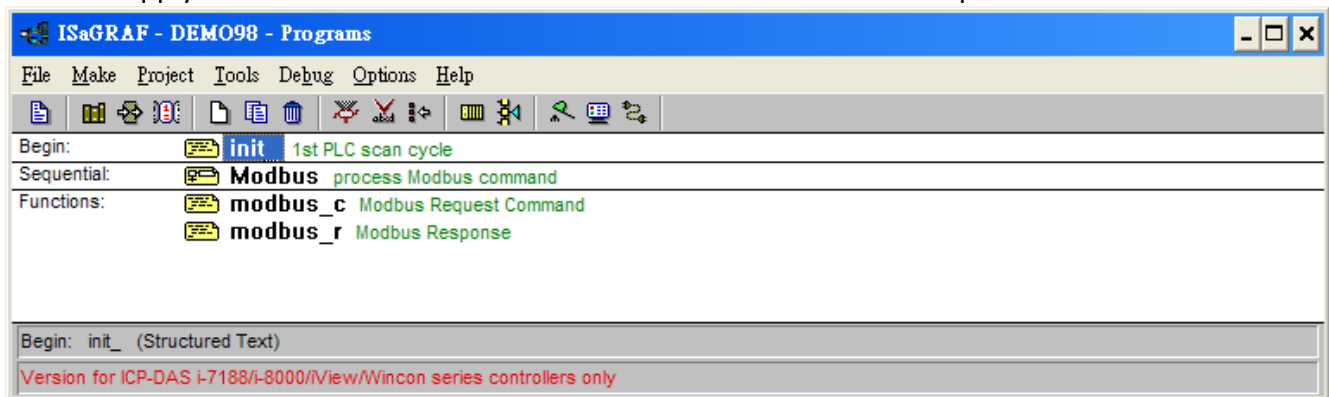
Classification	ISaGRAF FAQ-098						
Author	Spike Huang	Version	1.0.0	Date	Oct. 2008	Page	1 / 3

Application: Link Serial COM Port to the Modbus RTU device by COM functions

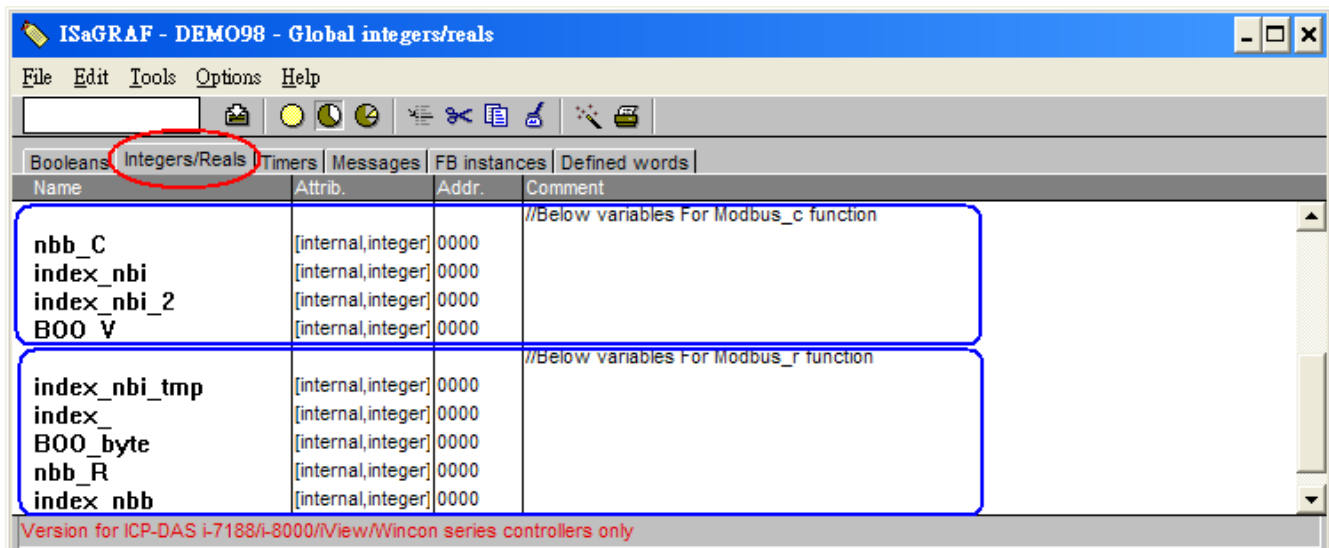
[Download FAQ-098 Demo](#)

When the Modbus function blocks provided by ICP DAS are unable to read / write some special Modbus devices, please refer to the FAQ-098 demo. User can define the Modbus command depend on the device to link the Modbus RTU device.

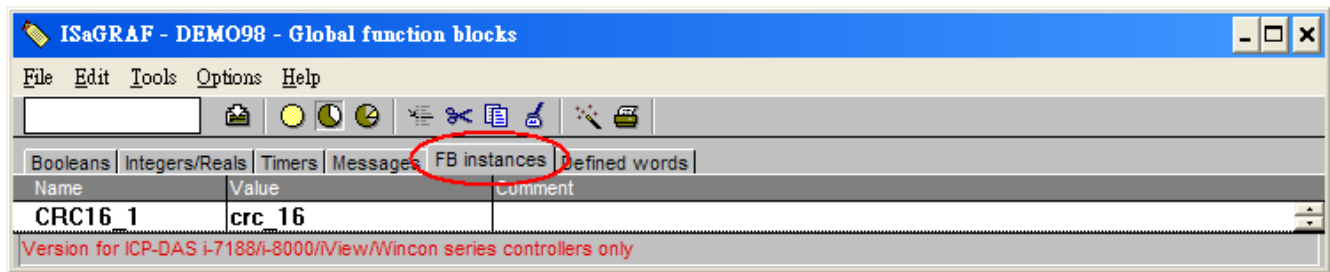
User can apply the code listed below or rewrite the similar code to accomplish it.



“modbus_c” and “modbus_r” in this demo are used for processing the Modbus request command and the Modbus response. If user has no special demand, do not need to revise them. User must define the variables for these two function blocks as the figure.



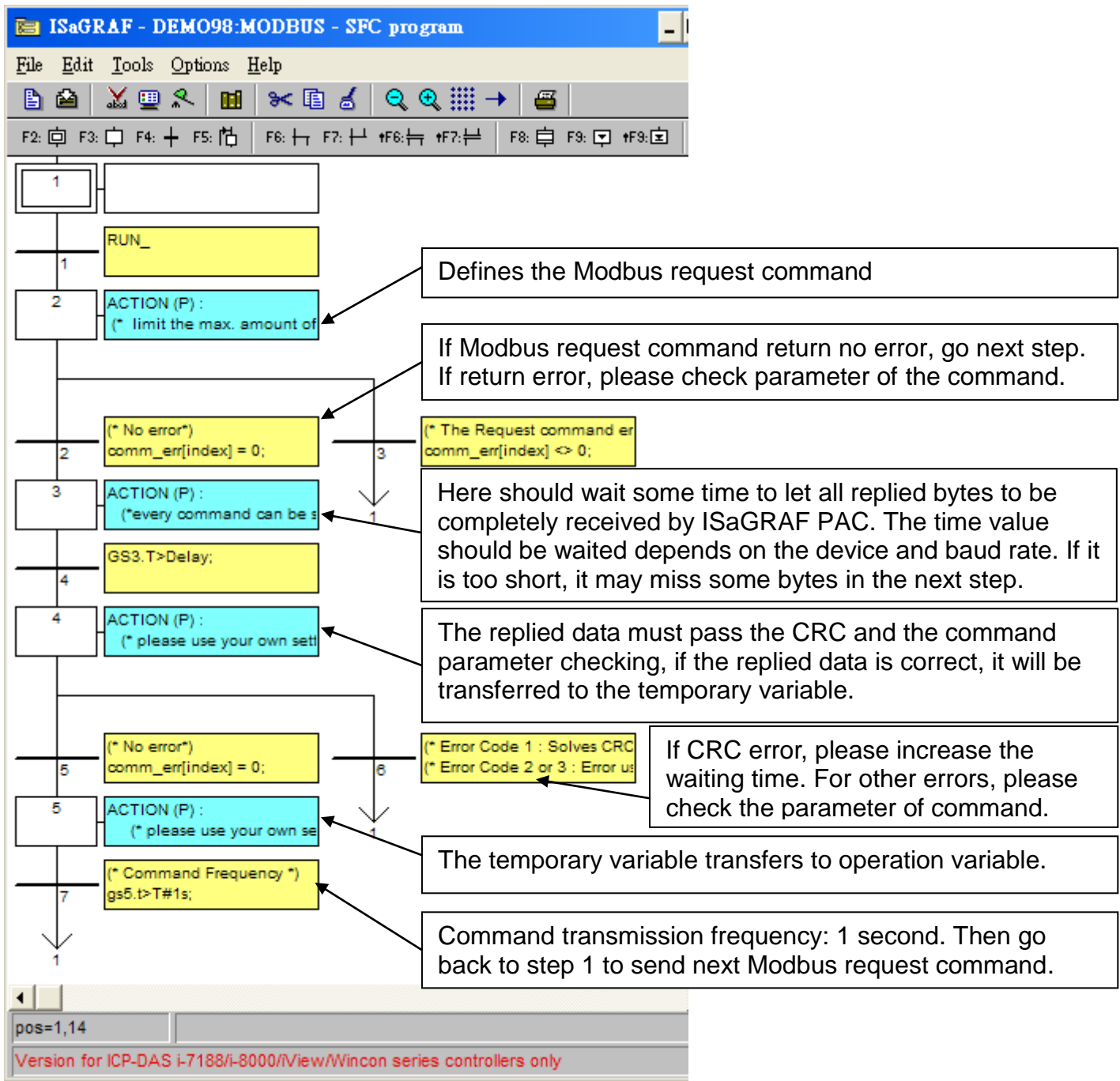
Classification	ISaGRAF FAQ-098					
Author	Spike Huang	Version	1.0.0	Date	Oct. 2008	Page 2 / 3



The main procedure of this example:

- A. Define the Modbus request command according to the Modbus device in Modbus program.
- B. Send a Modbus Command to device via COM2.
- C. Waiting for Modbus device to reply the related answer
- D. Delay 1 second, then send next Modbus Command to devices ...

Classification	ISaGRAF FAQ-098					
Author	Spike Huang	Version	1.0.0	Date	Oct. 2008	Page 3 / 3



Please refer to the “Modbus” program for more detail descriptions.