

Classification	ISaGRAF FAQ-096						
Author	Chun Tsai	Version	1.0.0	Date	Apr. 2007	Page	1 / 2

Release Two C-Function-Blocks to Read Max. 24 Words or 384 Bits from Modbus RTU / ASCII Devices

[Download FAQ-096 Demo](#)

The uPAC-7186EG, iPAC-8xx7, WP-8xx7, VP-25W7/23W7, XP-8xx7-CE6 and W-8xx7 support “Mbus24r” and “Mbus24r1” to read max. 24 words or 384 bits from Modbus RTU / ASCII devices since the following PAC driver version. (The WP-8xx7, VP-2xW7, XP-8xx7-CE6 and W-8xx7 also support “Mbus_XR” and “Mbus_XR1” to read max. 120 words. Refer to <http://www.icpdas.com/en/faq/index.php?kind=280#751> > FAQ-101)

uPAC-7186EG: Ver.1.03

W-8xx7: Ver. 4.03

VP-25W7/23W7: Ver. 1.02

WP-8xx7: since released.

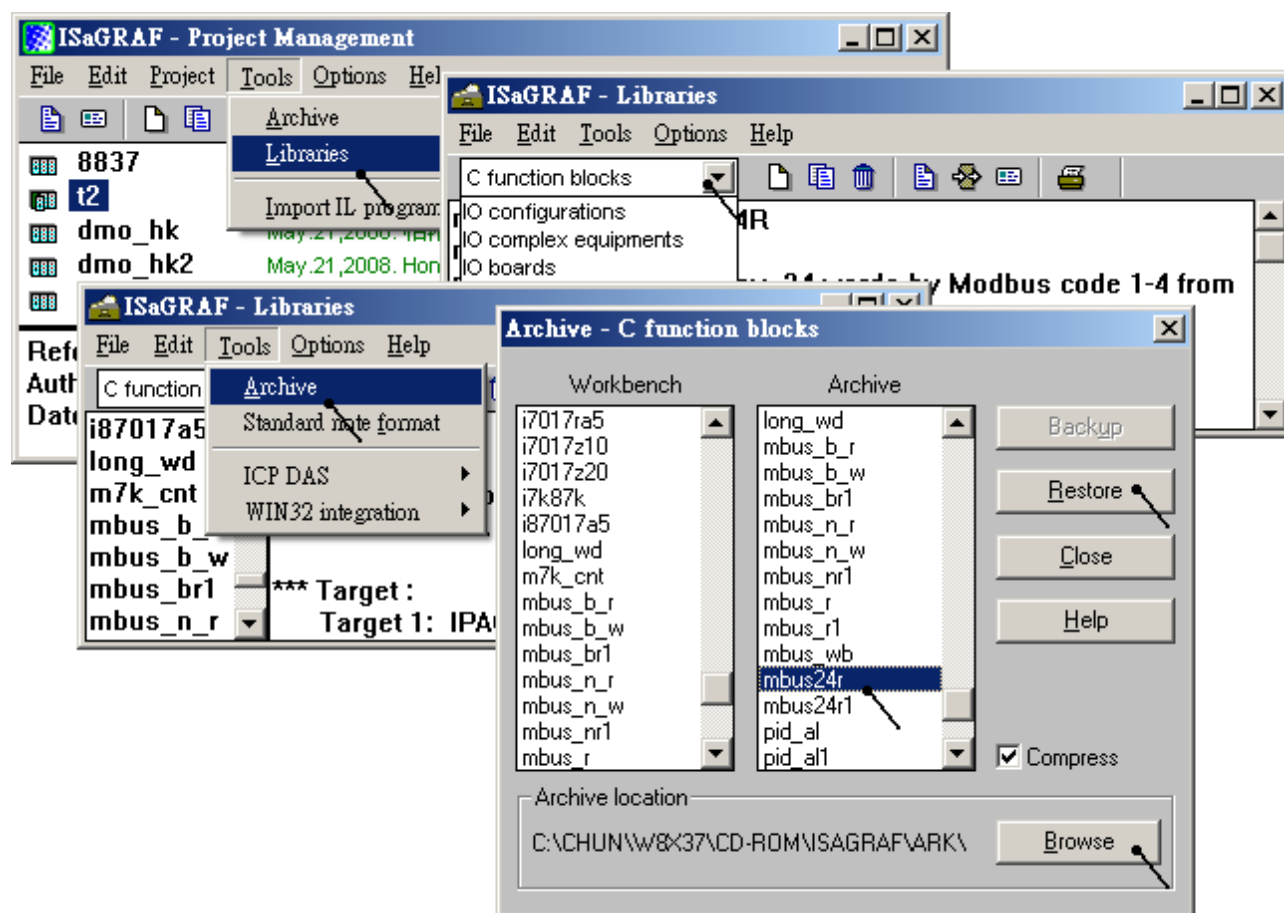
iPAC-8x47: since released.

XP-8xx7-CE6: since released

User can download the new released driver at

<http://www.icpdas.com/en/download/show.php?num=368&nation=US&kind1=&model=&kw=isagraf> .

Then please make sure if the PC / ISaGRAF has installed the “Mbus24r” and “Mbus24r1” C-function-block library. The library file “mbus24r.fia” and “mbus24r1.fia” can be download at [Download FAQ-096 Demo](#) (Inside the “faq096_demo.zip”). Then install them as the below figure.



Classification	ISaGRAF FAQ-096						
Author	Chun Tsai	Version	1.0.0	Date	Apr. 2007	Page	2 / 2

Then program the “Mbus24r” and “Mbus24r1” in the Ladder or Function Block program. Its usage is similar as the “mbus_r” and “Mbus_r1”. Please refer to the Chapter 8 of “ISaGRAF User's Manual” or the “user_manual_i_8xx7.pdf” and “user_manual_i_8xx7_appendix.pdf” at the following location.

<http://www.icpdas.com/en/download/show.php?num=333&nation=US&kind1=&model=&kw=isagraf>