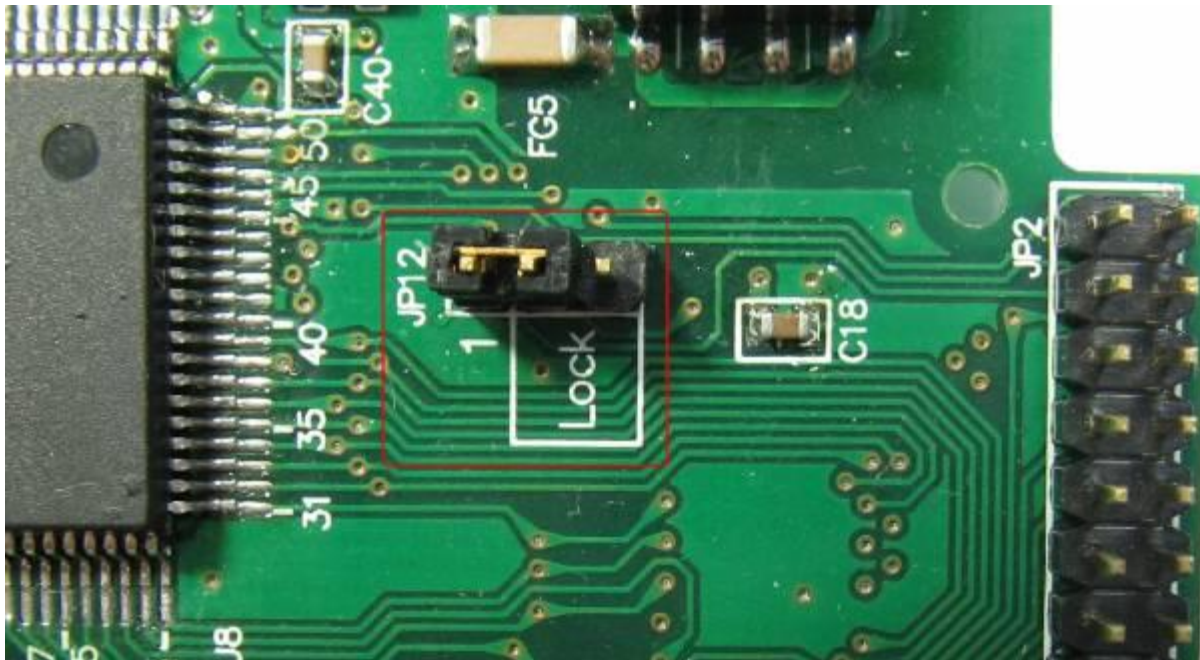


Classification	ISaGRAF FAQ-089						
Author	Spike Huang	Version	1.0.0	Date	Mar. 2008	Page	1 / 2

## Why my uPAC-7186EG unable to renew the driver and ISaGRAF application?

The uPAC-7186EG has a hardware write-protect function to protect the data in the Flash memory. When the function is active, user can not renew the driver and ISaGRAF application to the uPAC-7186EG.

Fig. The JP12 jumper is uPAC-7186EG Flash memory write-protect position



The write-protect default is inactivate. The JP12 is in "1" position when writing the data into Flash Memory. If want to prevent the Flash Memory been wrote data by accident, please shut down the power after download your data into Flash memory. Then put the JP12 in "Lock" position to protect the Flash memory.

When JP12 is located in "Lock" position, the following conditions will come up:

1. **Unable to renew the driver-**

Run "7188xw.exe", type "isa7186e \*p=" will show Flash Memory status

Classification	ISaGRAF FAQ-089						
Author	Spike Huang	Version	1.0.0	Date	Mar. 2008	Page	2 / 2

```

7188XW 1.34 [COM1:115200,N,8,1],FC=0,CTS=0, DIR=D:\napdos\ISaGRAF\7186eg\driver\latest_86eg\1.01
i7186EX_UDP>isa7186e *p=

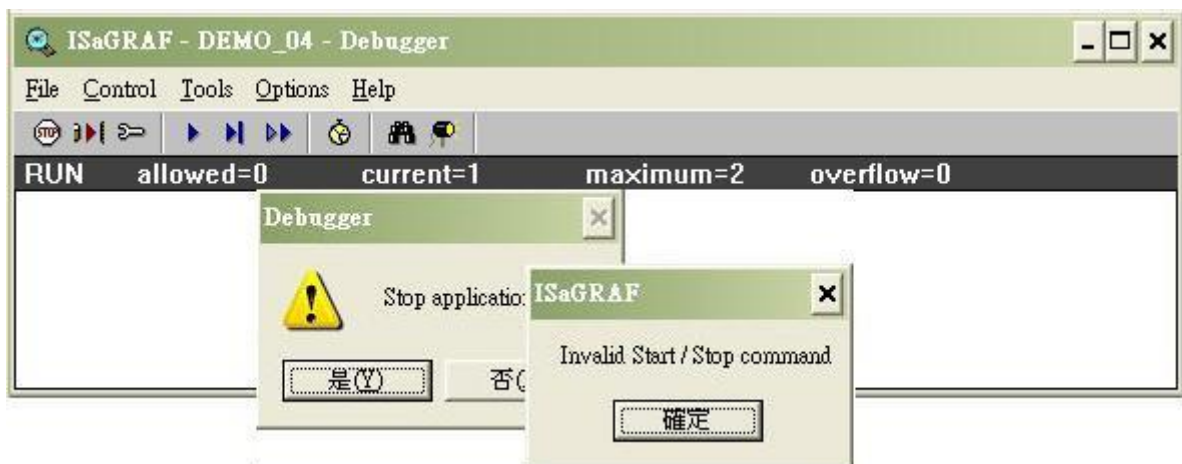
Driver: uPAC-7186EG : isa7186e.exe -1.01, Mar.21,2008
MiniOS7: Must use 86-071031.img
Licence is OK
NET-ID : 1
COM1 is Modbus RTU slave port,19200,8,N,1
COM3 is Free
Use 'isa7186e *f=1' to free COM1, 'isa7186e *f=0' to set COM1 as Modbus RTU
Use 'isa7186e *s=1 to 255' to set NET-ID to 1 to 255
Use 'isa7186e *d=' to delete ISaGRAF program
Use 'isa7186e *b=0 to 9' to set baudrate of COM1 as 1200,2400...
Use 'isa7186e *x=0 ~ 9' to set COM3 as Modbus RTU,'isa7186e *x=f' to free COM3
Baudrate are as follows : 1=2400,2=4800,3=9600,4=19200, 5=38400,6=57600,7=115200,8=300,5
=600,0=1200
Flash Memory is protected; refer to www.icpdas.com > FAQ > Software > ISaGRAF > 089 for
more detail info.

(C)Copyright:ICP DAS CO. . LTD. Taiwan Id:84517297

```

## 2. Unable to stop ISaGRAF application-

Appear the warning diagram after the stop application as shown below.



## 3. Unable to download the ISaGRAF application-

Appear the warning message after the download application as shown below.

