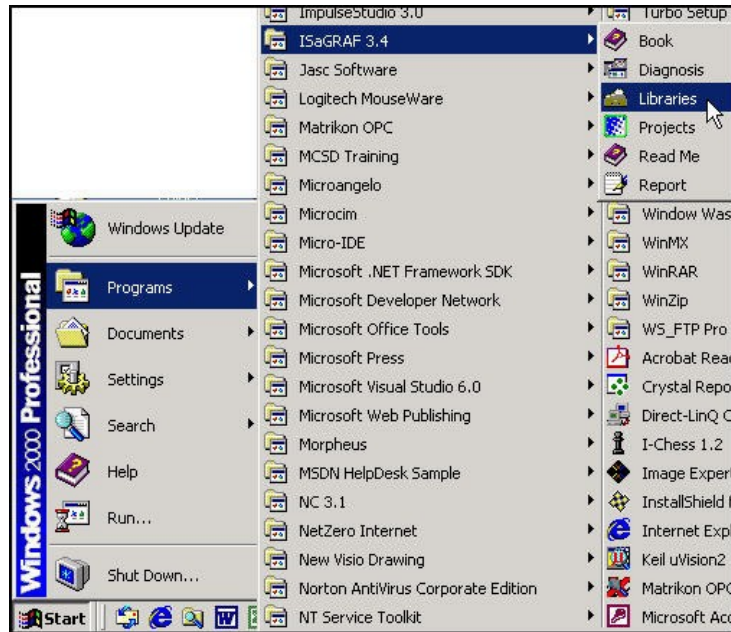
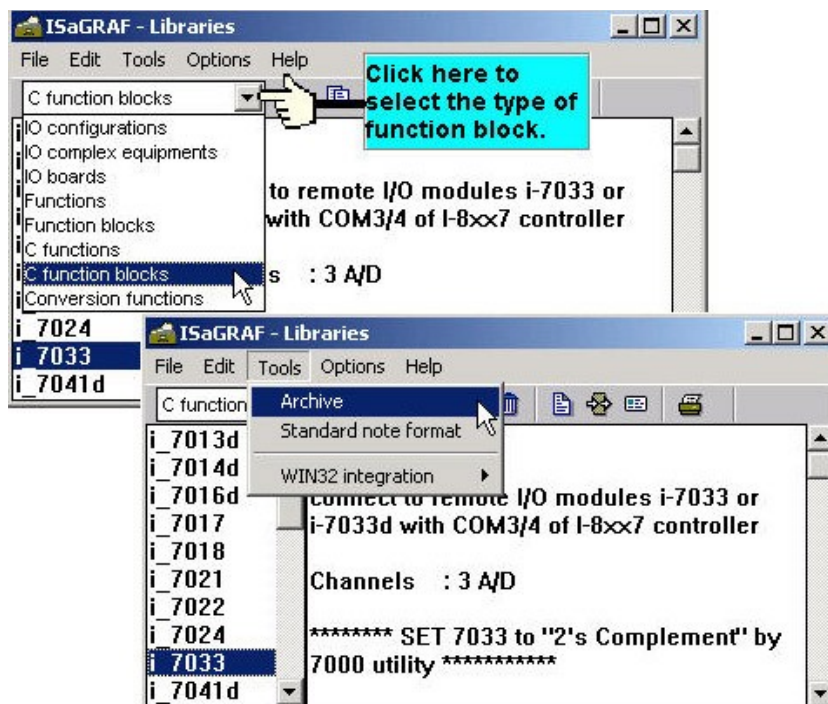


Appendix A.2: Adding New Function Blocks To ISaGRAF

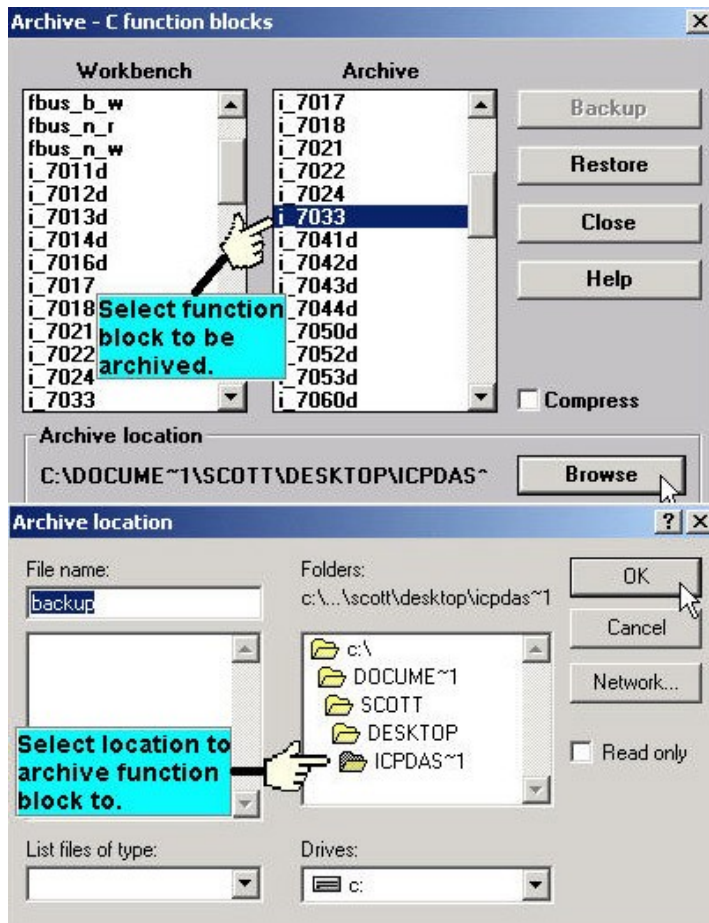
To add or update functions or function blocks one by one for the ISaGRAF Workbench program, click on the Windows "Start" menu, select "Programs", select "ISaGRAF 3.4", then click on "Libraries" to begin installing or updating ISaGRAF functions or function blocks.



When you click on "Libraries" the "ISaGRAF Libraries" window will open. To add a new "c function block" or "c function" or "IO complex equipment" or "IO board" select "Tools" from the menu bar and then click on "Archive".



Click on the file name you want to "Archive" and then click "Browse" button to select the sub-directory to where (CD_ROM\Napdos\ISaGRAF\ARK\) you want to archive the function block library to.



Select the new function block in the "Archive" window that you want to add, and then click on the "Restore" button. When you click on the "Restore" button the function block will be added to the ISaGRAF Workbench window.

