

Classification	ISaGRAF English FAQ-072						
Author	Chun Tsai	Version	1.0.0	Date	Aug. 2007	Page	1 / 8

## Application: Record Voltage/Current input by ISaGRAF PAC every 20 ms for 1 to 10 minutes. Then send this record file by email.

[Download FAQ-072 Demo.](#)

Note that WinCon-8xx7 has been phased out, visit to the ISaGRAF website for more information about new products [https://www.icpdas.com/en/product/guide+Software+Development\\_\\_Tools+ISaGRAF](https://www.icpdas.com/en/product/guide+Software+Development__Tools+ISaGRAF)

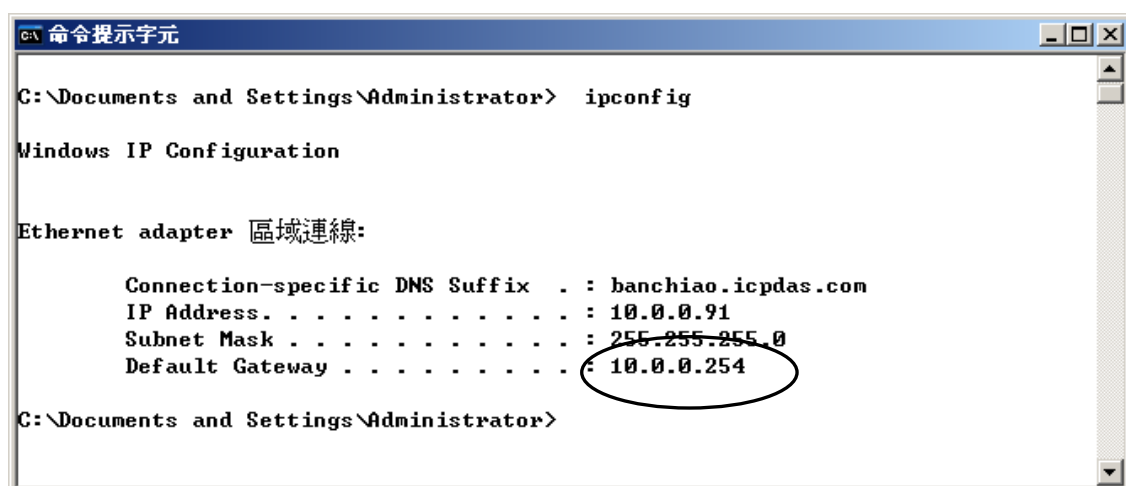
This sample applies in one 3-slot or 7-slot WinCon-8xx7 with one I-8024 in its slot No.2 and one I-8017H in its slot No. 3. Then connect I-8024 's Ch.1 to Ch.4 voltage output to I-8017H 's Ch.1 to Ch.4 voltage input.

The I-8024 in this sample will generate 4 voltage output curves to I-8017H. This sample will record I-8017H 's Ch.1 to Ch.4 voltage inputs to a "User-allocated RAM memory" . It can record totally 1 to 10 minutes. When it is finished, these records are saved to a file, then WinCon-8xx7 will send it by Email. The ISaGRAF demo program name is "Wdemo\_66.pia ", please visit <http://www.icpdas.com/en/faq/index.php?kind=280#751> FAQ- 072 to download it.

For more information about sending email by using ISaGRAF PAC, please visit [FAQ-067](#).

For more information about "User-allocated RAM memory" and "File operation functions" , please visit [FAQ-057](#) and [FAQ-060](#).

To send email correctly, please set proper Gateway IP in the PAC's Ethernet port setting. Please type command "**ipconfig**" on a PC 's command prompt window at the same local network to get the Gateway IP setting as below. (Here is 10.0.0.254)



```

C:\Documents and Settings\Administrator> ipconfig

Windows IP Configuration

Ethernet adapter 區域連線:

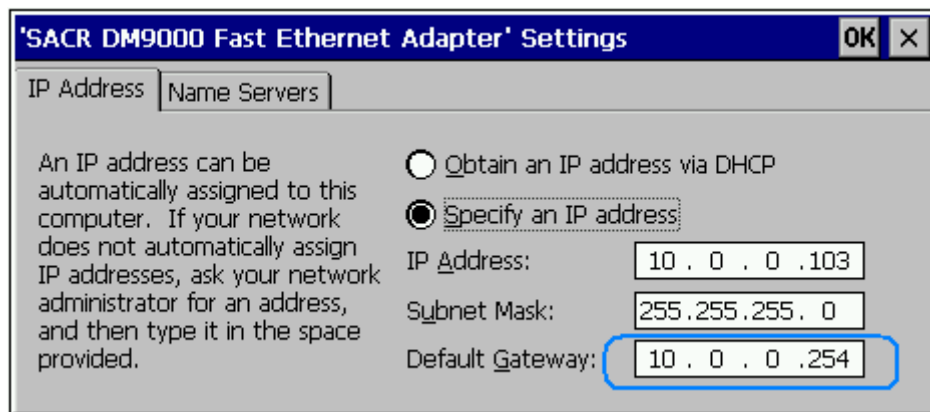
    Connection-specific DNS Suffix  . : banchiao.icpdas.com
    IP Address. . . . .               : 10.0.0.91
    Subnet Mask . . . . .             : 255.255.255.0
    Default Gateway . . . . .         : 10.0.0.254

C:\Documents and Settings\Administrator>

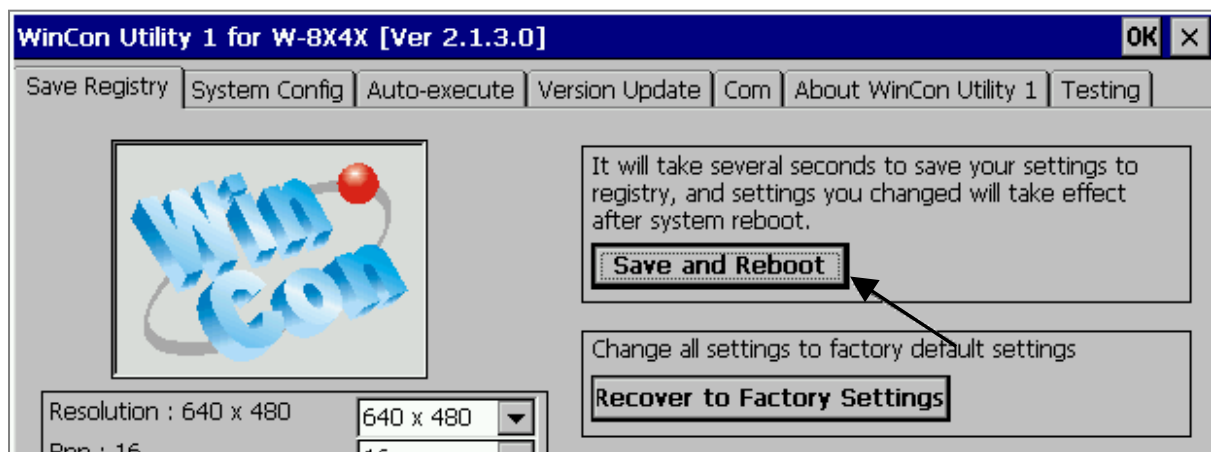
```

Classification	ISaGRAF English FAQ-072						
Author	Chun Tsai	Version	1.0.0	Date	Aug. 2007	Page	2 / 8

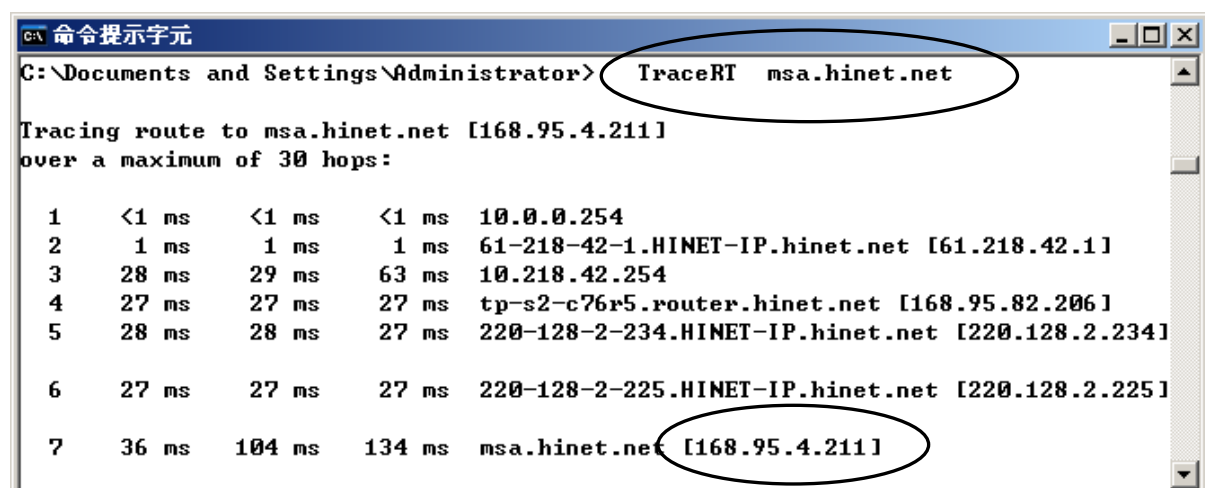
Then, fill-in this Gateway IP address to your WinCon's Ethernet port setting (If PAC model is W-8347/8747, you can enable two Ethernet ports, then you need to fill-in both with the same Gateway IP)



Then run PAC Utility – Save and Reboot to store the IP setting. It will automatically re-boot once.



The PC's command prompt windows can also request the Mail Server's IP address (We need it in the ISaGRAF program). For example, to request IP of msa.hinet.net, please type command **TraceRT msa.hinet.net** as below (Here is 168.95.4.211)



Classification	ISaGRAF English FAQ-072						
Author	Chun Tsai	Version	1.0.0	Date	Aug. 2007	Page	3 / 8

Email demo download from FAQ -072 is "Wdemo\_66.pia".

Please modify at least the below setting in the demo program to your own setting.

```

TMP := MAIL_SET( 1, 'chun@icpdas.com' );      (* Receiver 1. please modify it *)
TMP := MAIL_SET( 100, 'go_mao@hotmail.com' ); (* Sender. please modify it *)
TMP := MAIL_SET( 101, '168.95.4.211' );      (* Mail Server 1's IP, please modify it *)

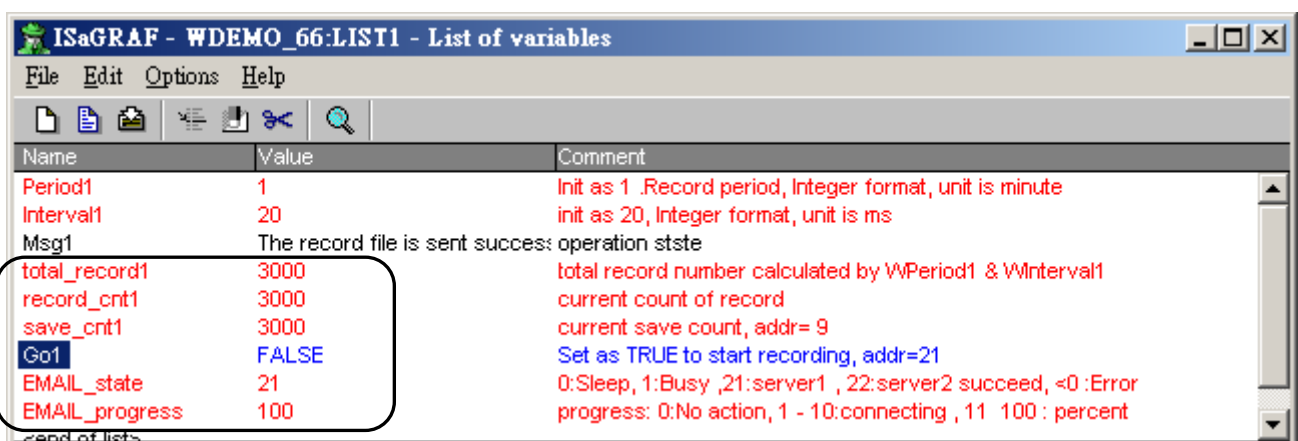
```

Then re-compile it and then download it to the PAC to run. The below windows will show up.

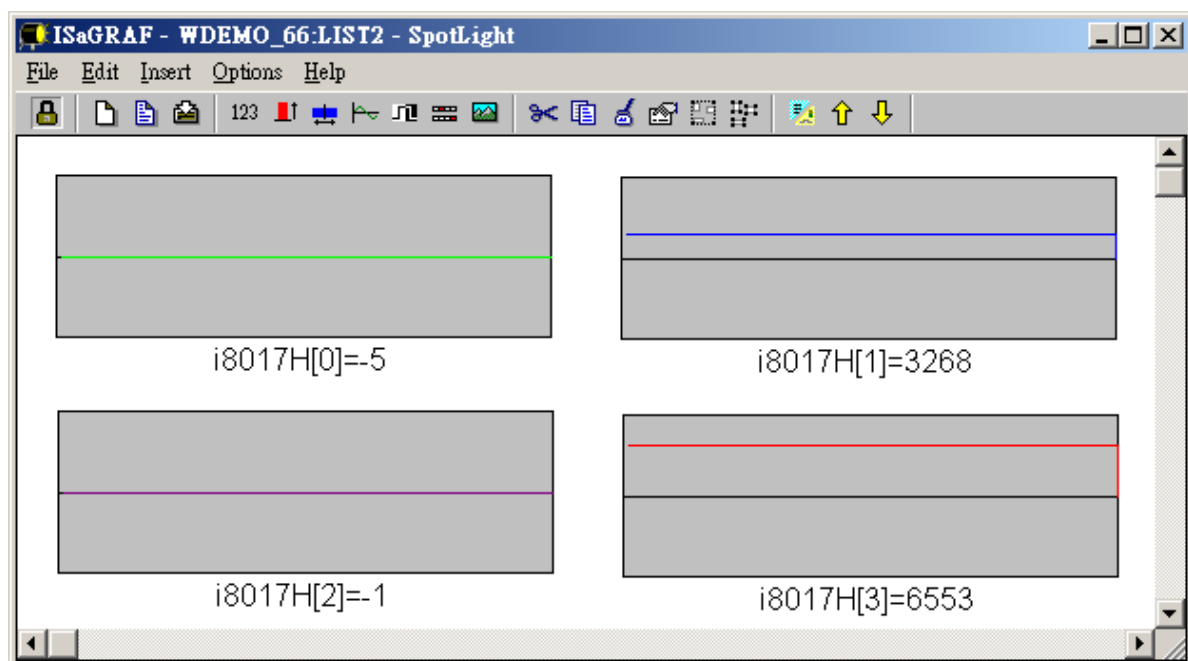
- "Period1"** is the recording period, unit is minute, value can be 1 to 10.
- "Interval1"** is the recording interval, unit is ms (0.001 second), value can be 10 to 10000.
- "Total\_record1"** is the total record amount. It is calculated automatically by program.
- "Record\_cnt1"** is the current finished record amount.
- "Save\_cnt1"** is the current saved record amount in the file after all records are finished.

Please set **"Go1"** as **TRUE** to start recording. If all records are finished, value of **"record\_cnt1"** should reach value of **"total\_record1"**. Then it will start to save all records into a file. If saving file is finished, value of **"save\_cnt1"** should reach value of **"total\_record1"**. Then W-8xx7 will send an email with this attached file.

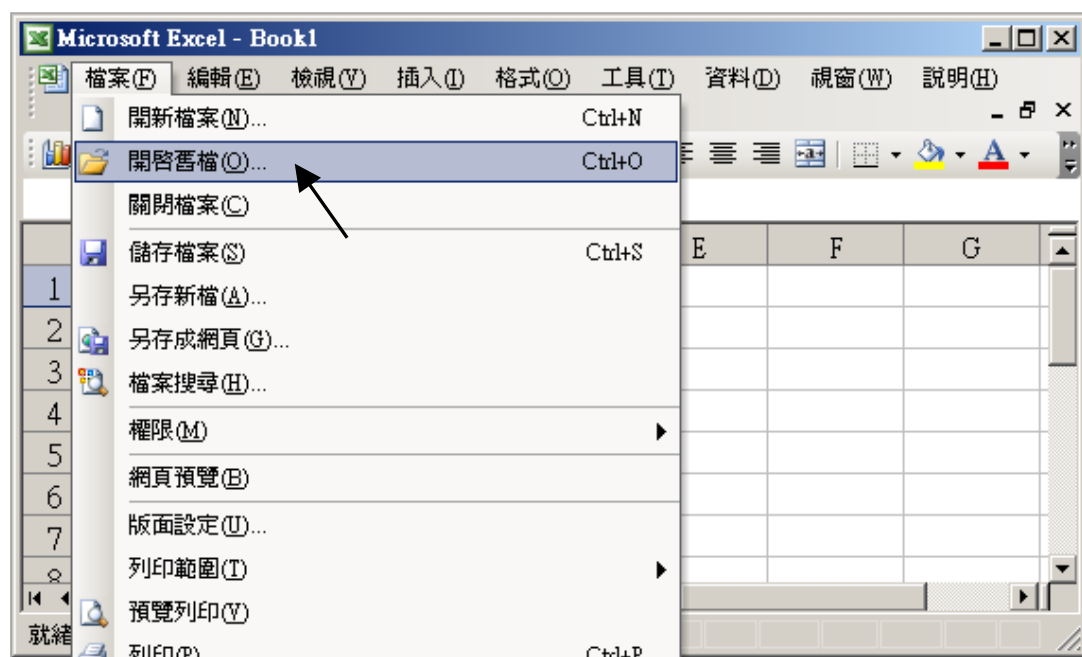
Few seconds later, value of **"Email\_state"** will be 21 or 22 if succeed. However value of **"Email\_state"** will be less than 0 if failed. When **"Email\_progress"** reach value of 100, it means the email data is 100% sent.



Classification	ISaGRAF English FAQ-072						
Author	Chun Tsai	Version	1.0.0	Date	Aug. 2007	Page	4 / 8

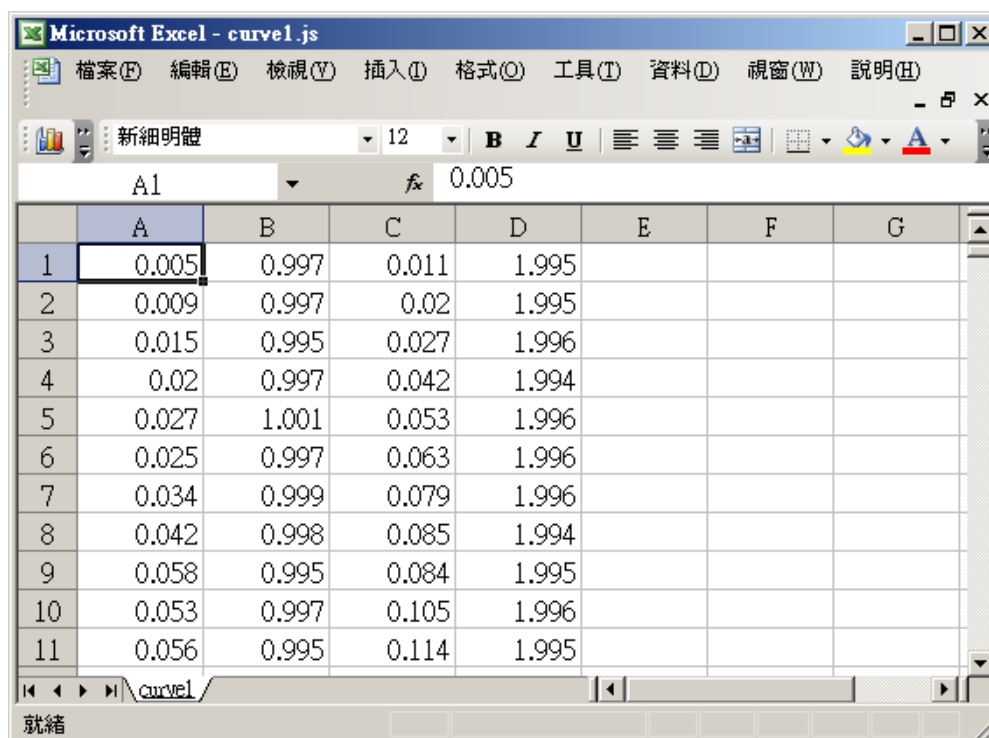


Then please receive this email by your PC. Then open this record file by M.S. Excel.

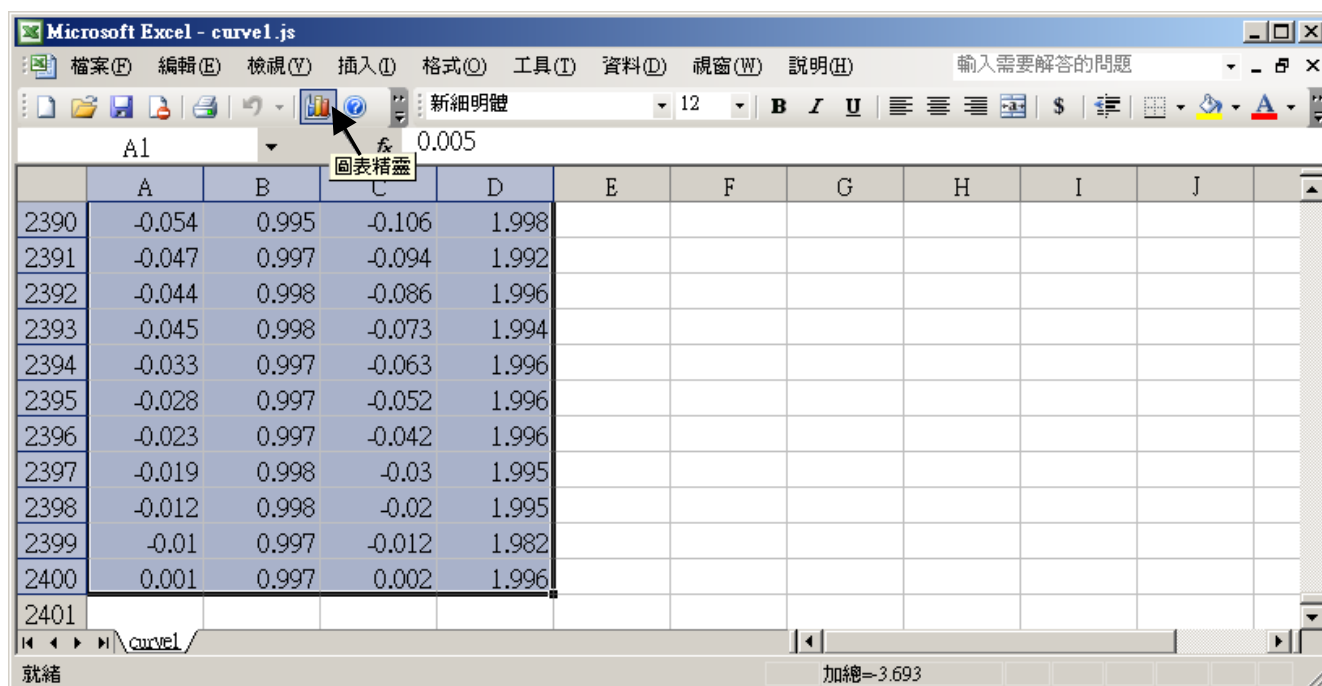


Classification	ISaGRAF English FAQ-072						
Author	Chun Tsai	Version	1.0.0	Date	Aug. 2007	Page	5 / 8

Please click on the first data at the left-top position. Then press and hold in **“Shift”** , and at the same time press **“Ctrl” – “End”** . You will see all data been selected.

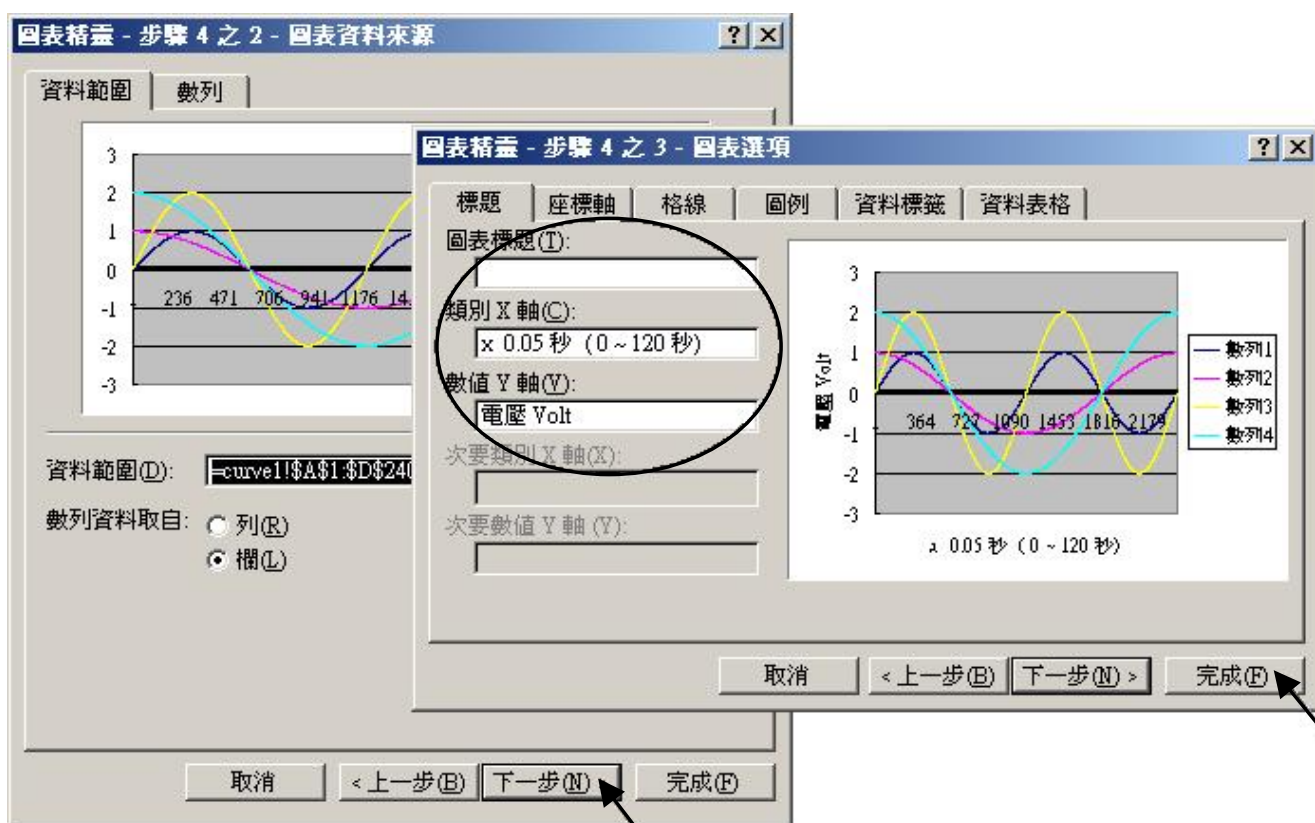
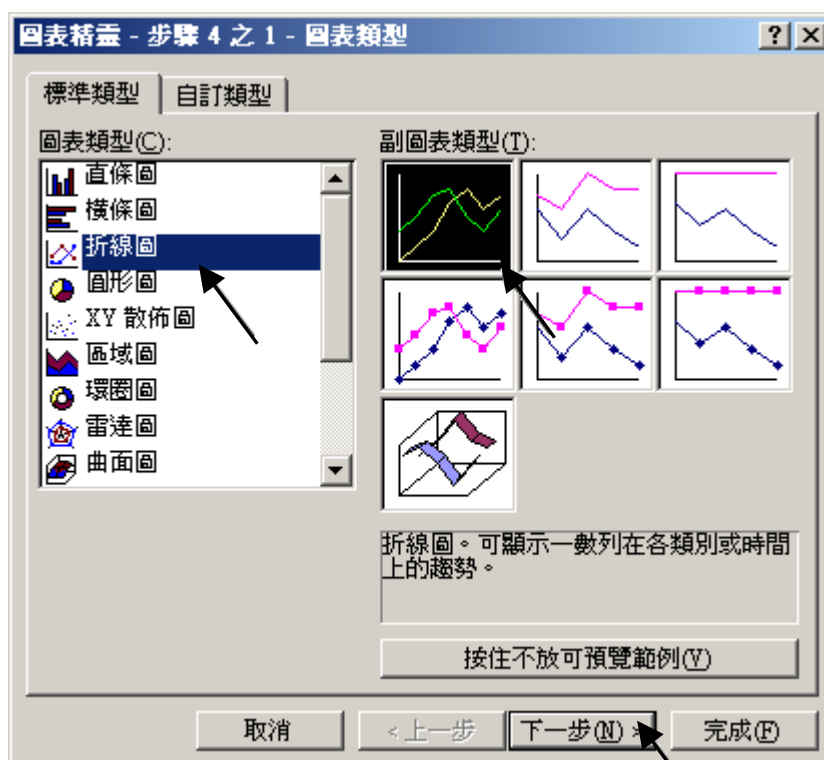


Then click on



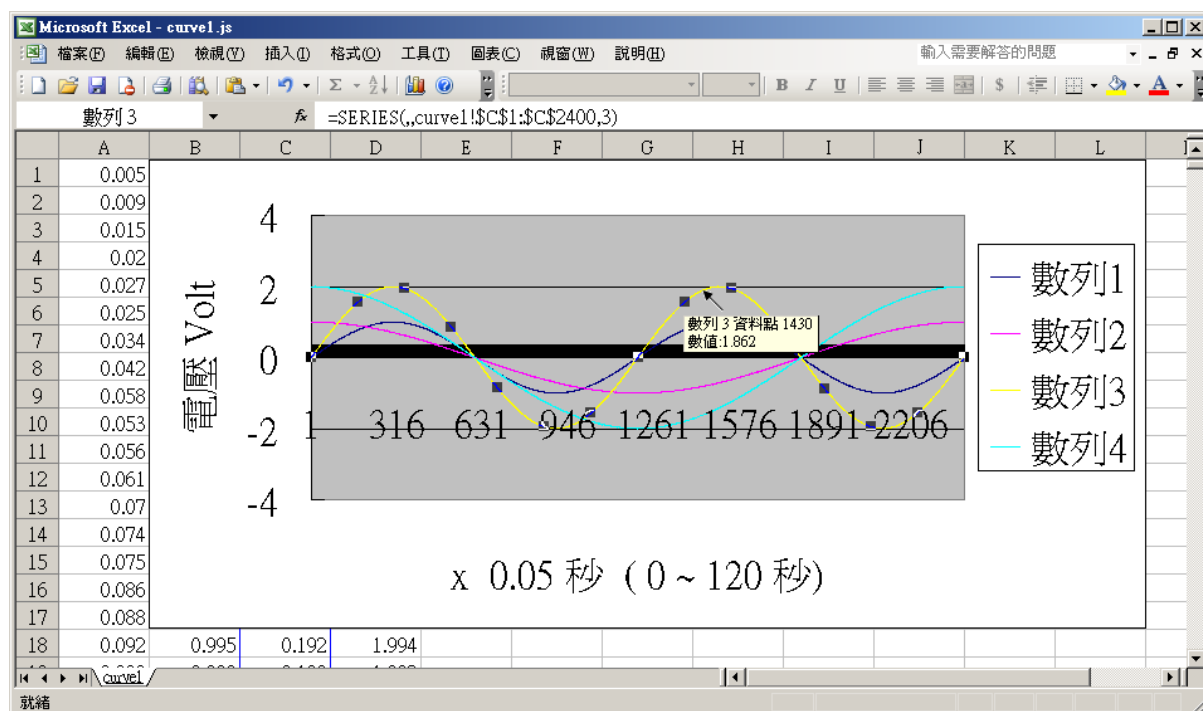
Classification	ISaGRAF English FAQ-072						
Author	Chun Tsai	Version	1.0.0	Date	Aug. 2007	Page	6 / 8

Please select the correct diagram on the left-hand side. And check the left-top type on the right-hand side. Then go **Next** .

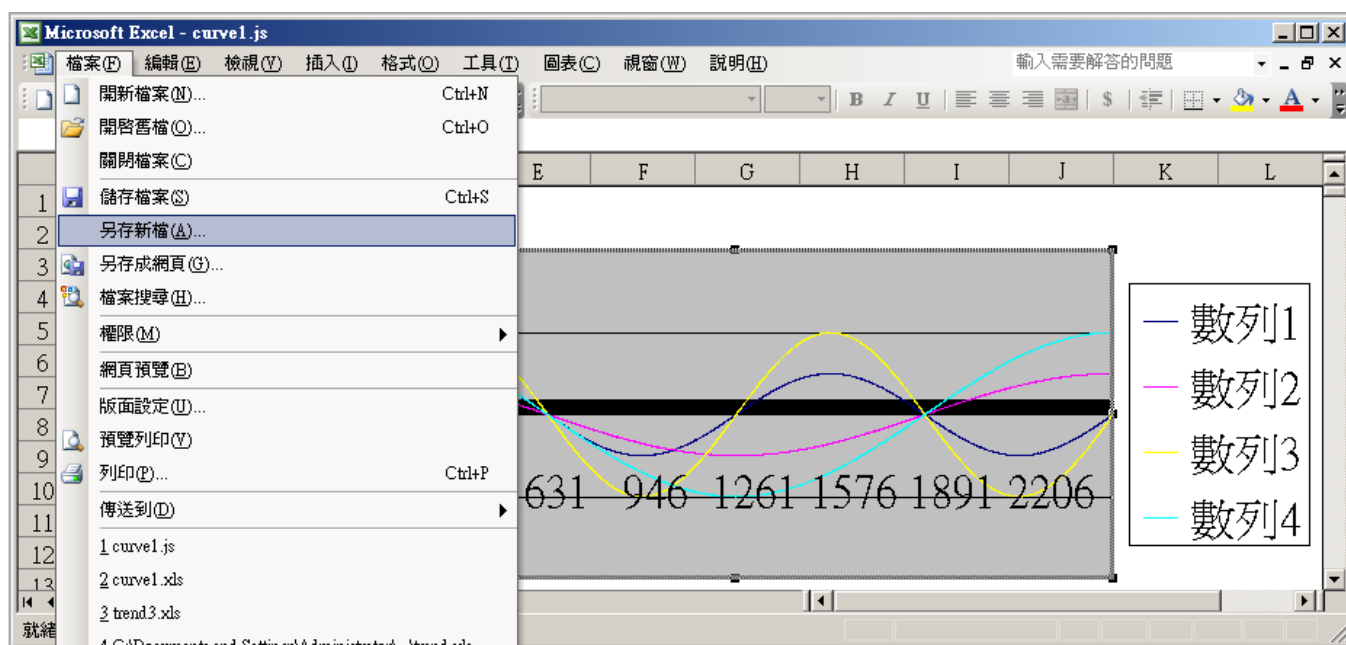


Classification	ISaGRAF English FAQ-072						
Author	Chun Tsai	Version	1.0.0	Date	Aug. 2007	Page	7 / 8

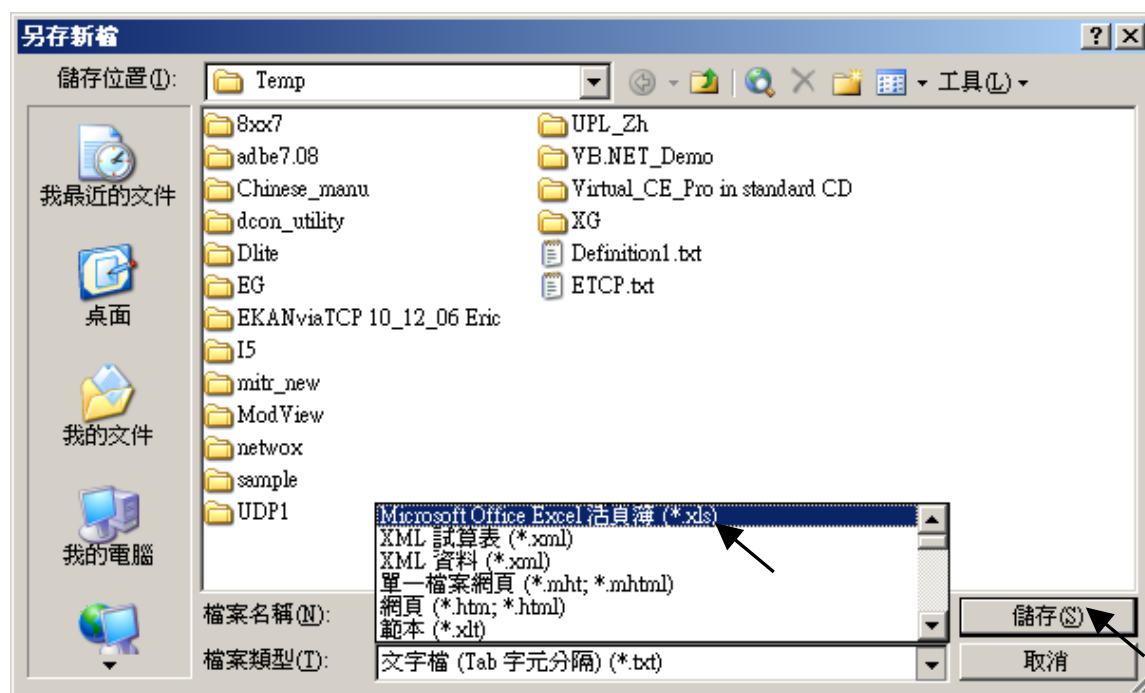
By the procedure, you will get the trend curve as the below window. You can modify its size, or check at any trend line. If you move your mouse to point at some position at the trend line, the related data is shown.



Please save this trend curve diagram as a “**Microsoft Office Excel (\*.xls)**” format. Then at any later time, you can open it to display the trend curve directly.



Classification	ISaGRAF English FAQ-072						
Author	Chun Tsai	Version	1.0.0	Date	Aug. 2007	Page	8 / 8



Click the link for more ISaGRAF FAQ:

<http://www.icpdas.com/en/faq/index.php?kind=280#751>