

Classification	ISaGRAF English FAQ-071						
Author	Chun Tsai	Version	1.0.0	Date	May 2008	Page	1 / 13

## Application: Record 10-Ch. temperature value into a file on ISaGRAF PAC every minute. When 24-hour recording is finished, send this record file by email every day.

[Download FAQ-071 Demo.](#)

Note that WinCon-8xx7 has been phased out, visit to the ISaGRAF website for more information about new products [https://www.icpdas.com/en/product/guide+Software+Development\\_\\_Tools+ISaGRAF](https://www.icpdas.com/en/product/guide+Software+Development__Tools+ISaGRAF)

### 1. Introduction

This application sample uses one WinCon-8xx7 + slot 2: I-87018Z to record 10-Ch. Temperature value every minute. Then send an email with the attached record file after the 24-hour recording is finished. The email is sent around 00:00 to 00:01 every day.

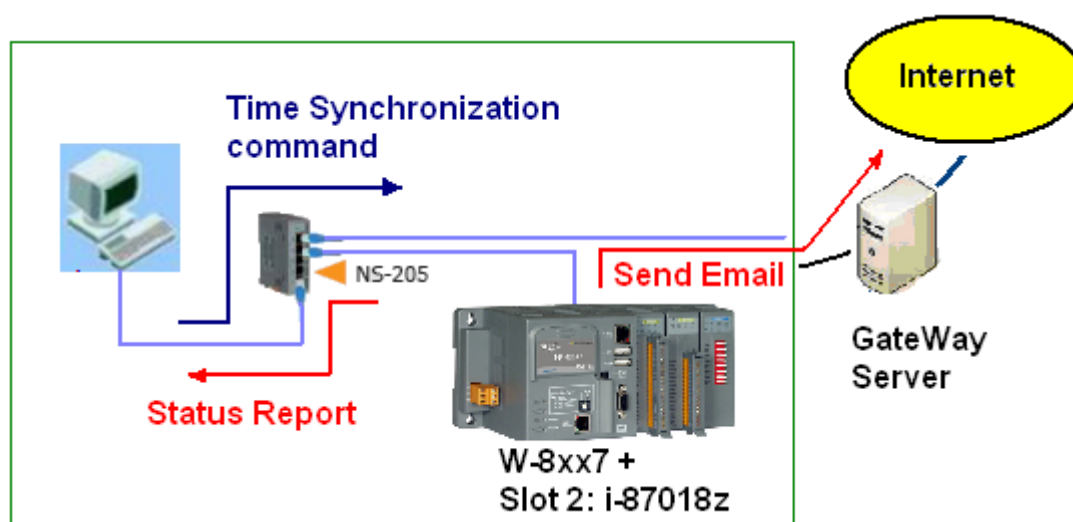
These two ISaGRAF demo programs are “wdmo\_65a” and “wdmo\_65b”.

Please visit <http://www.icpdas.com/en/faq/index.php?kind=280#751> FAQ-071 to download them.

**Wdmo\_65a** just records data and then send it by email.

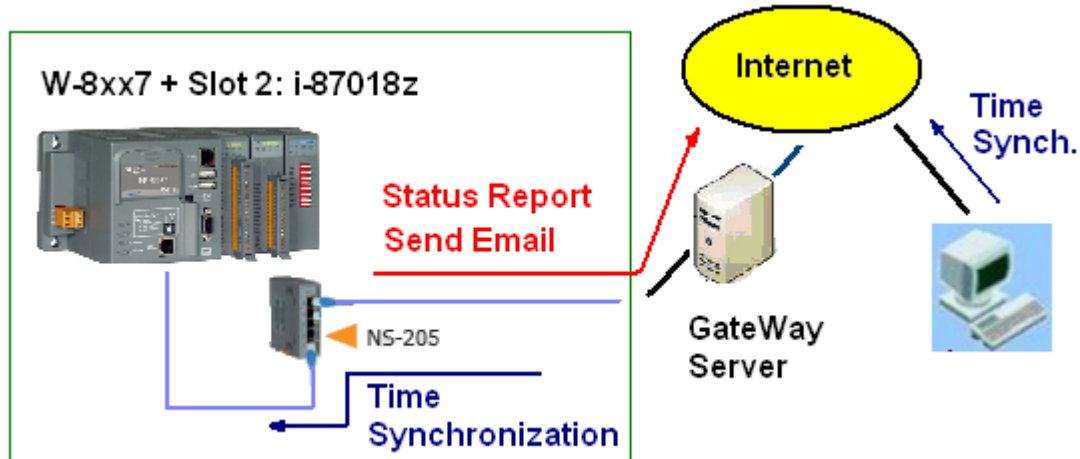
**Wdmo\_65b** records data and then send it by email and also do time synchronization and state report.

If you are running “**wdmo\_65b**”, it apply one PC, IP = 10.0.0.91, Mask = 255.255.255.0 to link to one W-8xx7 in the local Ethernet area (or two W-8xx7 is Ok. The “Station\_No” variable must set to different value, one is 1001, other is 1002. And also set to two different IP address). Please set this W-8xx7's IP = 10.0.0.105 , Mask = 255.255.255.0



Classification	ISaGRAF English FAQ-071						
Author	Chun Tsai	Version	1.0.0	Date	May 2008	Page	2 / 13

If the PC resides at the Internet, it must use a fixed Internet IP. And also please modify the initial value of the “IP\_correct\_PC” variable and modify the IO connection – udp\_ip – “to\_ip1” value in the ISaGRAF project “wdmo\_65b” to be the same as that Internet IP. Then re-compile it.



## 2. Install software and hardware for demo testing

When using WinCon-8xx7, the version of ISaGRAF driver must be 4.02 or later. If the “mail\_snd” and “mail\_set” functions haven’t been installed in ISaGRAF on your PC, visit the website to download the I/O library and then run “setup.exe” inside the zip file.

<https://www.icpdas.com/en/download/show.php?num=368&nation=US&kind1=&model=&kw=isagraf>

Visit the [FAQ-071](#) to download the demo program. If you want to know more about the UDP protocol used in this sample, refer to the section 4. Also, visit the [FAQ-067](#) for more about email functions.

The ISaGRAF demo program is **wdmo\_65b.pia**.

(Please set the PAC’s IP as 10.0.0.105, Mask as 255.255.255.0)

### **Note:**

**Set the gateway IP of the PAC.** “Gateway IP” can be found on a PC that is on the same network segment with the local PAC. To do this, set the PC’s IP as DHCP (i.e., obtain an IP address automatically), then open a Command Prompt , key-in “ipconfig” as below, then we got the Gateway IP setting.

Classification	ISaGRAF English FAQ-071						
Author	Chun Tsai	Version	1.0.0	Date	May 2008	Page	3 / 13

```

C:\Documents and Settings\Administrator> ipconfig

Windows IP Configuration

Ethernet adapter 區域連線:

    Connection-specific DNS Suffix  . : banchiao.icpdas.com
    IP Address. . . . .               : 10.0.0.91
    Subnet Mask . . . . .             : 255.255.255.0
    Default Gateway . . . . .         : 10.0.0.254

C:\Documents and Settings\Administrator>

```

Because the original “wdmo\_65b” program will send an email only at around 00:00 ~ 00:01 every day, for demo purpose, we may not want to wait so long to see the result. Then please modify the below code of the “RECORD1” program in this “wdmo\_65b” project. Then it will send an email about every 3 minute.

**Modify:**

```
if Abs_time >= 0 and Abs_time <= 59 then
```

**To become:**

```

TMP_v := Abs_time / 60 ;
if Mod( TMP_v , 3 ) = 0 then

```

To make this demo program to send an email correctly, please modify the below email setting code to your own. Visit to the [FAQ-067](#) for more details.

```

TMP := MAIL_SET( 1 , 'chun@icpdas.com' ) ;      (* please modify Receiver 1 *)
TMP := MAIL_SET( 100 , 'go_mao@hotmail.com' ) ; (* please modify the sender *)
TMP := MAIL_SET( 101 , '168.95.4.211' ) ;      (* modify the Mail server 1 's IP *)

```

Then re-compile this “wdmo\_65b” project and then download it to the W-8xx7.  
Then please run VB 6.0 demo\_9 program in your testing PC (refer to Section 3).

Classification	ISaGRAF English FAQ-071						
Author	Chun Tsai	Version	1.0.0	Date	May 2008	Page	4 / 13

### 3. VB 6.0 demo program

Please finish the steps listed in section 2 first before doing the following steps in this section.

Please set your PC 's IP address to a fixed IP = **10.0.0.91**, Mask = **255.255.255.0** for testing this demo.  
(Because the ISaGRAF demo program "wdmo\_65b" running in the W-8xx7 will report message to the PC with IP = 10.0.0.91 and with UDP port No. = 12001)

The VB 6.0 demo program "demo\_9.exe" resides at "..\vb6\_demo\demo\_9\"," visit the ISAGRAF FAQ webpage <http://www.icpdas.com/en/faq/index.php?kind=280#751> FAQ-071 to download it. Then, run MS. VB 6.0 development studio to open the source code of this "demo\_9", the file is  
"..\vb6\_demo\demo\_9\demo\_9.vbp"

After running this "demo\_9.exe", a "VB 6.0 Demo\_9" window will show up as below. Please enter the proper value of the following items and then click on "Start" to test it.

"**UDP\_port\_No**" is the UDP port No. which this PC is going to bind it to receive message coming from local PACs (value can be 1001 to 65535). This demo uses value of 12001.

"**Security\_passwd**" is the protocol security password . Value can be 0, or 1 to 2147483647, or - 2147483647 to -1. This demo uses value of 1234567.

"**Output\_File\_name**" is an option. You may specify it or leave it empty. If specifying a name to it, then demo\_9.exe will create a new empty file to record all valid message from the local PACs.

**VB 6.0 Demo\_9 Time synchronization demo and email sending**

Please refer to [www.icpdas.com](http://www.icpdas.com) - FAQ - Software - ISaGRAF - 071 for more. Please set PC IP=10.0.0.91 , Controller 2 IP =10.0.0.105 Mask=255.255.255.0 . If you have the second or more controller , please modify its ISaGRAF program 's variable - "Station\_No" to other different value = 1002, 1003, ...  
Local controller - W-8xx7 will auto-report data to this PC / Server via UDP IP protocol.  
1. This program is only for demo purpose. ICP DAS and Chun has no responsibility for it.  
2. This program is to receive udp frame from a W-8xx7. Then PC reply time synchronization command to the controller.  
if the controller is Wincon-8xx7, please make sure its ISaGRAF driver is 3.38 or later version  
The ISaGRAF program in this demo is "wdmo\_65b" (station No.=1002), please download it to the W-8xx7 + slot 2: i-87018z (IP=10.0.0.105 , Mask = 255.255.255.0, remember to set its proper Gateway address for sending email or sending UDP protocol to the Internet)

**Parameters**  
UDP\_port\_No:     Security\_passwd:     Output\_File\_name:        

Winsock state: **Socket open!**    **2007/7/19 19:50:5**

Local controller is on Line or not  
Controller 1001: **No response > 1 Minutes**    Controller 1002: **On Line**

VB 6.0 Time synchronization demo for PC / Server. Starting at 2007/7/19 下午 07:48:08  
PC / Server IP = 10.0.0.91    UDP Port No = 12001

1: Receive 52 bytes ...

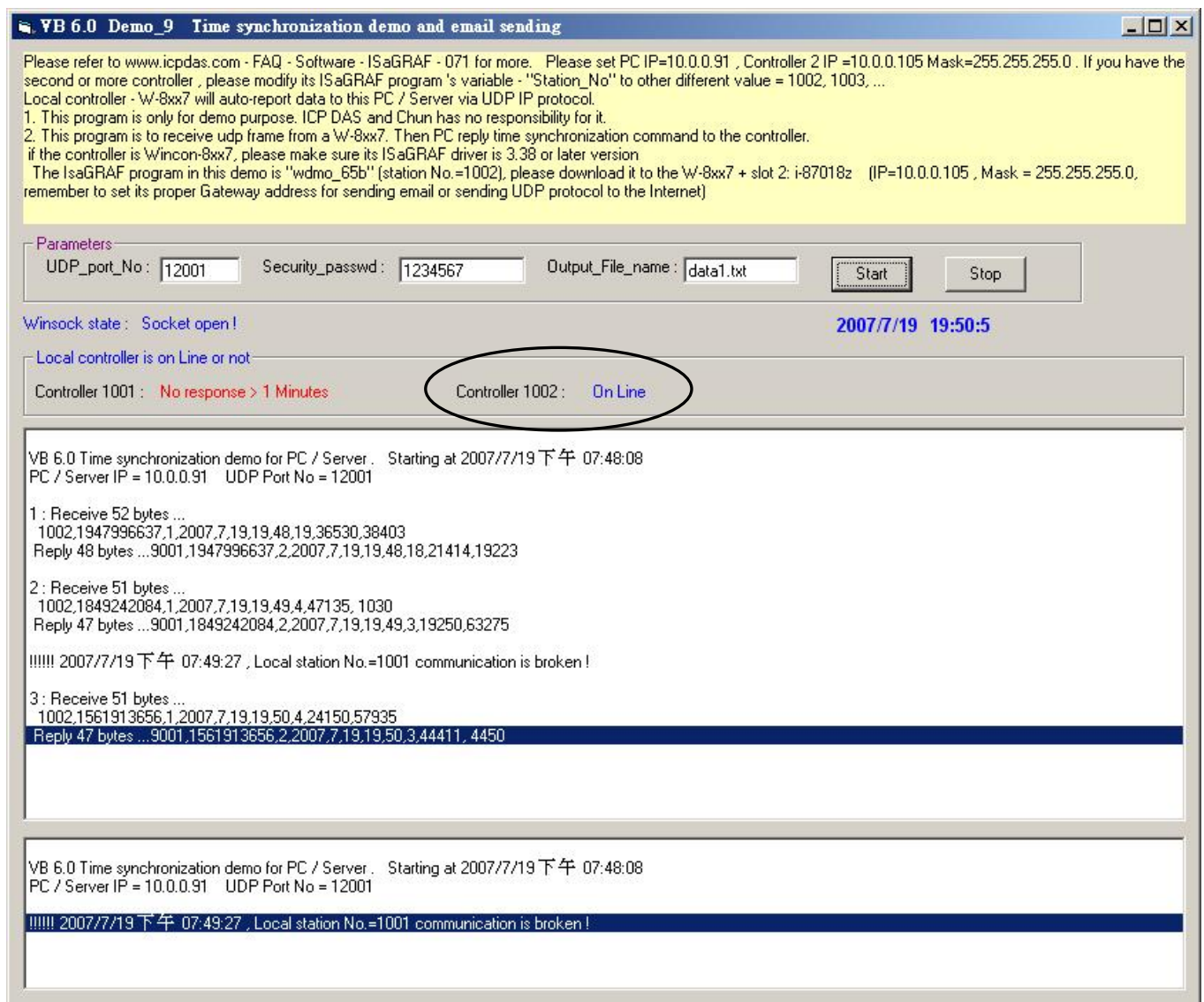
Classification	ISaGRAF English FAQ-071						
Author	Chun Tsai	Version	1.0.0	Date	May 2008	Page	5 / 13

## How to test?

If the code of the testing “wdmo\_65b” is not modified, it will send an email at around 00:00 ~ 00:01. It may be received by, for example, the outlook express. If it is modified to send an email every 3 minute, then you just need to wait about 3 minutes to receive such an email. (Please remember to modify the receiver , sender and mail server setting in this “wdmo\_65b”. Please refer to the description of the former section)

The W-8xx7 PAC will send message to the PC/Server when below events happen in this demo.

1. 15 seconds later after the Local PAC is power up. (This only deliver once)
  2. Send once at every minute past. (Continuously and periodically)
- A. Please wait about 2 minutes after running “demo\_9.exe”. If this W-8xx7 connection is Ok, it will display “On Line”. If the W-8xx7 doesn’t report any message to the PC/Server over one minute, it will display “No response ...”.



Classification	ISaGRAF English FAQ-071						
Author	Chun Tsai	Version	1.0.0	Date	May 2008	Page	6 / 13

- B. Please modify the time of this PC/Server. For example, two hours moving ahead, then wait about one minute, you will see the connected W-8xx7 's time will be modified to become the same time as the PC/Server. The principle is every time W-8xx7 sends message to the PC, the PC will calculate the time difference.

If it is larger than 20 seconds, the PC will send a time synchronization command to the PAC. If the application is applied in a local Ethernet area, you may modify this allowed "time difference" to a smaller value, for example modifying from 20 to become 5 seconds. Please modify the below statement in the VB 6.0 demo\_9 source code and re-compile it.

Modify:

If Temp > 20 Or Temp < -20 Then

To become:

If Temp > 5 Or Temp < -5 Then

- C. Please observe if receiving a message every minute.

Classification	ISaGRAF English FAQ-071						
Author	Chun Tsai	Version	1.0.0	Date	May 2008	Page	7 / 13

#### 4. UDP protocol definition in the demo listed in this document

This protocol definition is valid for the ISaGRAF demo program “wdmo\_65b” and VB 6.0 demo program “demo\_9” .

1. Local PAC is as UDP Client, while PC/Server is as UDP Server. Only Local PAC can auto-send data (message/string) to the PC/Server (The message variable - “IP\_correct\_PC ” and integer variable - “Port\_correct\_PC” in the ISaGRAF demo program “wdmo\_65b” specify the IP address and UDP port No. of the target PC/Server. And also there is similar definition of the target PC/Server in the ISaGRAF IO connection window - “udp\_ip” ).

2. PC/Server must reply a message with <Command> = 2 or 4 to the local PAC in 15 seconds after it receives a valid message from the local PAC. The replied message must contain the exact same <ID No.> as the <ID No.> it received from the local PAC. The local PAC will drop the replied message with incorrect <ID No.>.

If the local PAC doesn't receive a valid replied message from the PC/Server in 15 seconds, it will send message once to the PC/Server with a different <ID No.>. Then if PC/Server still not replied it in 15 seconds, local PAC will continuously send message again until it receives a valid replied message. (The timer variable - “Timeout\_interval” in the ISaGRAF demo program “wdmo\_65b” defines this Timeout value)

3. The local PAC will send message to the PC/Server when below events happen in this demo.
  - (1) 15 seconds later after the Local PAC is power up. (This only deliver once)
  - (2) Send once at every minute past. (Continuously and periodically)

4. UDP message format of Local PAC sending to the PC/Server

**Security\_passwd:** Must be specified as the same value in the ISaGRAF IO connection window – “udp\_ip” and in the VB demo program to communicate well. **Value can be 0:** means “No encoding” (it is not safe) , or 1 to 2147483647, or -2147483647 to -1 (**none-zero value** means “with encoding”, it is much safe).

If setting as a **none-zero value**, please refer to the “convert\_to\_udp\_deliver\_buf( )”, “convert\_back\_udp\_deliver\_buf( )” and “udp\_ip\_crc( )” function in the VB 6.0 “demo\_9” for its encoding algorithm.

**When setting “Security\_passwd” as 0,** every delivered message can not exceed 255 bytes.

**When setting “Security\_passwd” as none-zero value,** every delivered message can not exceed 259 bytes. The last added 4-bytes is the <4-byte-Checksum > calculated by the “udp\_ip\_crc( )” function.

Classification	ISaGRAF English FAQ-071					
Author	Chun Tsai	Version	1.0.0	Date	May 2008	Page 8 / 13

**Local PAC will send the below format to the PC/Server.**

**Security\_passwd is 0 :** (No 4-byte-Checksum at the end)

<Station\_No of local PAC>,<ID No.>,<Command>,  
<Year>,<Month>,<Day>,<Hour>,<Minute>,<second>,  
<User-defined CRC>

For example:

1001,850334470,1,2007,5,30,17,31,51,46677,18632

It means,

**<Station\_No of local PAC>** is 1001

**<ID No.>** is 850334470

**<Command>** is 1

**PAC's date and time** is 2007/5/30 , 17:31:51

**< User-defined CRC >** is 46677,18632

**Security\_passwd is not 0 :** (With 4-byte-Checksum at the end)

<Station\_No of local PAC>,<ID No.>,<Command>,  
<Year>,<Month>,<Day>,<Hour>,<Minute>,<second>,  
<User-defined CRC><4-byte-Checksum>

**<Command> definition:**

1 : Local PAC report data to the PC/Server

**<User-defined CRC> definition:**

Can be defined as a different algorithm by the User. This demo apply the following algorithm  
(Please apply a different algorithm in real application for safety)

Value is fixed as 11 bytes (Character). It contains two value of 0 to 65535 separated by a “,”

For example,



Classification	ISaGRAF English FAQ-071						
Author	Chun Tsai	Version	1.0.0	Date	May 2008	Page	9 / 13

value_1	value_2	fixed length of 11 bytes (Character)					
0	0	:	'	0,	0'	(with 4 Space Char. before '0')	
1	1	:	'	1,	1'	(with 4 Space Char. before '1')	
21	21	:	'	21,	21'	(with 3 Space Char. before '2')	
321	321	:	'	321,	321'	(with 2 Space Char. before '3')	
4321	4321	:	'	4321,	4321'	(with 1 Space Char. before '4')	
54321	65535	:	'	54321,65535'		(No Space Char.)	

Below steps - **(a) to (d)** is to get **value 1**, while - **(e)** is to get **value 2**

(Please apply a different algorithm in real application for safety)

- (a) extract the string not including the <User-defined CRC> and <4-byte-Checksum> into byte array - user\_buf[ ] (for convient, we call this byte array as "user\_buf[ ]" )
- (b) eplace user\_buf[3] as **user\_buf[3] xor 100**  
That is user\_buf[3] = user\_buf[3] ^ (unsigned char)100 ;  
(user may use [2], [4], ... , and may be not using 100, ... whatever,  
this depends on your own decision. Please use your own algorithm for safety.)
- (c) replace user\_buf[7] as **user\_buf[7] xor 200**  
That is user\_buf[7] = user\_buf[7] ^ (unsigned char)200;  
(user may use [5], [6], ... , and may not use 200, ... whatever,  
this depends on your own decision. Please use your own algorithm for safety.)
- (d) Calculate <User-defined CRC> as **two byte => <CRC\_Hi><CRC\_Lo>**  
Then <User-defined CRC> = 256\*<CRC\_Hi> + <CRC\_Lo>.  
It is a value between 0 and 65535.
- (e) using a different algorithm to get value 2  
proceed (a) , then proceed (b) by using user\_buf[4]=**user\_buf[4]^(unsigned char)48**  
then proceed (c) by using user\_buf[6]=**user\_buf[6]^(unsigned char)197**  
then proceed (d). Then we get value 2. It is a value between 0 and 65535.  
(Please use your own algorithm for safety.)

Classification	ISaGRAF English FAQ-071						
Author	Chun Tsai	Version	1.0.0	Date	May 2008	Page	10 / 13

## 5. UDP message format of the PC/Server replying to local PAC

**Security\_passwd:** Using the same definition as item 4.

PC/Server will reply below format to the local PAC

**Security\_passwd is 0 :** (No 4-byte-Checksum at the end)

<Station\_No of PC/Server>,<Same ID No. from the local PAC>,<Command>,  
<Year>,<Month>,<Day>,<Hour>,<Minute>,<second>,  
<User-defined CRC>

For example,  
9001,519805546,2,2007,5,30,18,59,53,6830,42679

It means,

< Station\_No of PC/Server > is 9001

<ID No.> is 519805546

<Command> is 2

**Date and Time on PC/Server** is 2007/5/30, 18:59:53

< User-defined CRC > is 6830,42679 (there is one Space Char. Before the first "6")

**Security\_passwd is not 0 :** (With 4-byte-Checksum at the end)

<Station\_No of PC/Server>,<Same ID No. from the local PAC>,<Command>,  
<Year>,<Month>,<Day>,<Hour>,<Minute>,<second>,  
<User-defined CRC><4-byte-Checksum>

**<Command> definition:**

2: to inform the local PAC that PC/Server receive its correct data.

4: to inform the local PAC that its date and time differ more than 20 seconds than the PC/Server, please adjust PAC's date and time and then send data to PC/Server once again.

**<User-defined CRC> definition:**

Using the same definition as item 4.

Classification	ISaGRAF English FAQ-071						
Author	Chun Tsai	Version	1.0.0	Date	May 2008	Page	11 / 13

## 5. PAC Ethernet security

**Note:** WinCon-8xx7 has been phased out, the user can use ISaGRAF XPAC. Visit the ISaGRAF website for new information.

[https://www.icpdas.com/en/product/guide+Software+Development\\_\\_Tools+ISaGRAF](https://www.icpdas.com/en/product/guide+Software+Development__Tools+ISaGRAF)

### 5.1 : Modbus TCP/IP security

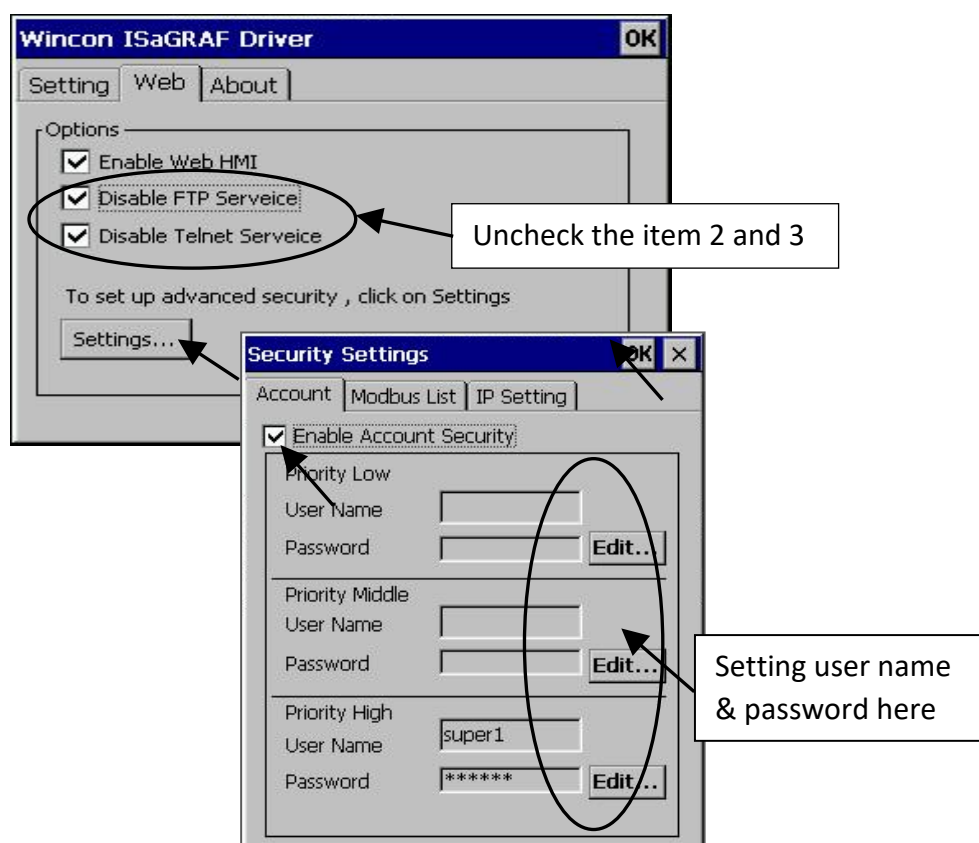
There are some ways user can get access to the Wincon-8xx7 via its ethernet port.

1. Using Modbus TCP protocol at port No.= 502. (ISaGRAF and other HMI can do this)
2. Using FTP (for example, keyin "ftp://10.0.0.103" on the Internet Explorer)
3. Using Telnet (for example, keyin "telnet 10.0.0.103" in the "command" window)
4. Using the Web server (The Web HMI does)

**Note:**

1. While for I-8437-80/8837-80, I-8437/8837 and I-7188EG, only item 1 is possible.
2. If the PAC is W-8x47/8x46, when using "ftp", "telnet", "Web HMI" & "Modbus TCP/IP", please connect your PC/HMI to W-8x47/8x46's "LAN1" port, and please use "NS-205" or "NS-208" Ethernet switch.

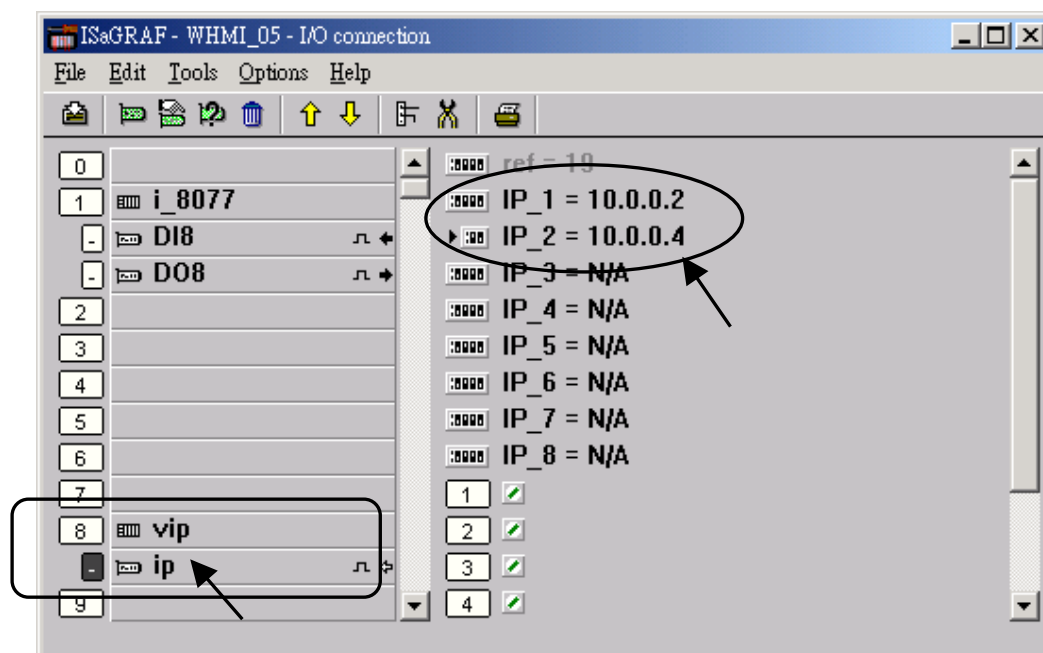
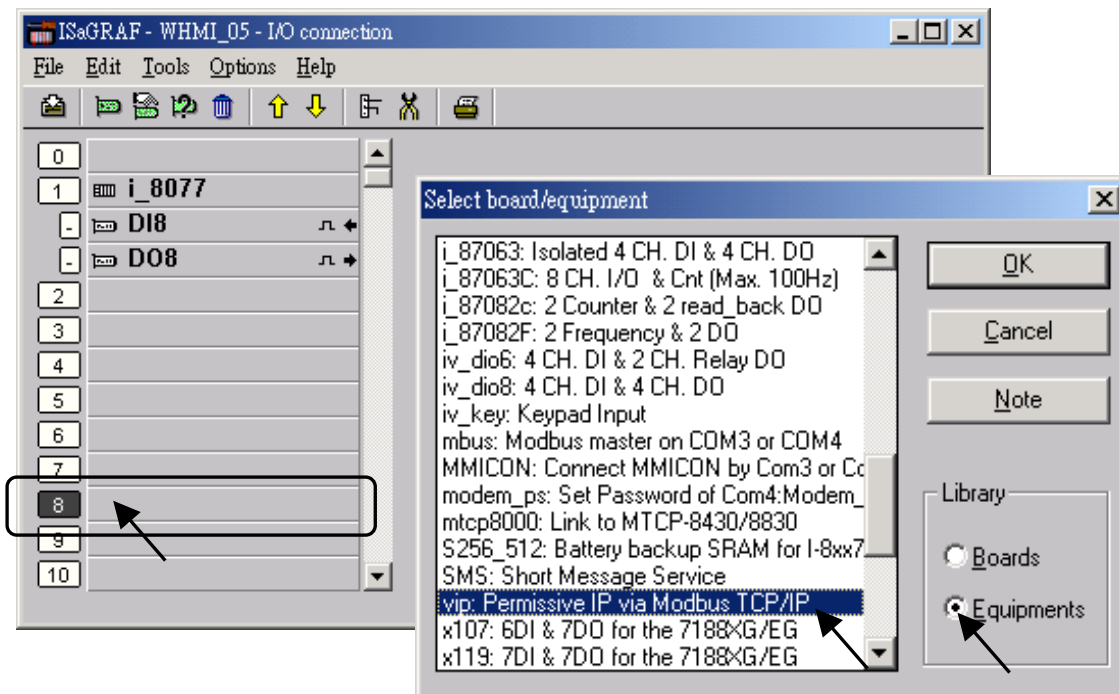
For safety, recommend to disable item 2 and 3 at run time for ISaGRAF PAC. For using the Web HMI (item 4 above), checking "Enable Web HMI", clicking the **Settings** button and set the proper username & password.



Classification	ISaGRAF English FAQ-071						
Author	Chun Tsai	Version	1.0.0	Date	May 2008	Page	12 / 13

About item 1, user may set up to 8 IP address for ISaGRAF or other HMI to get access to the I-8x37 or I-7188EG via the Modbus TCP/IP protocol as below.

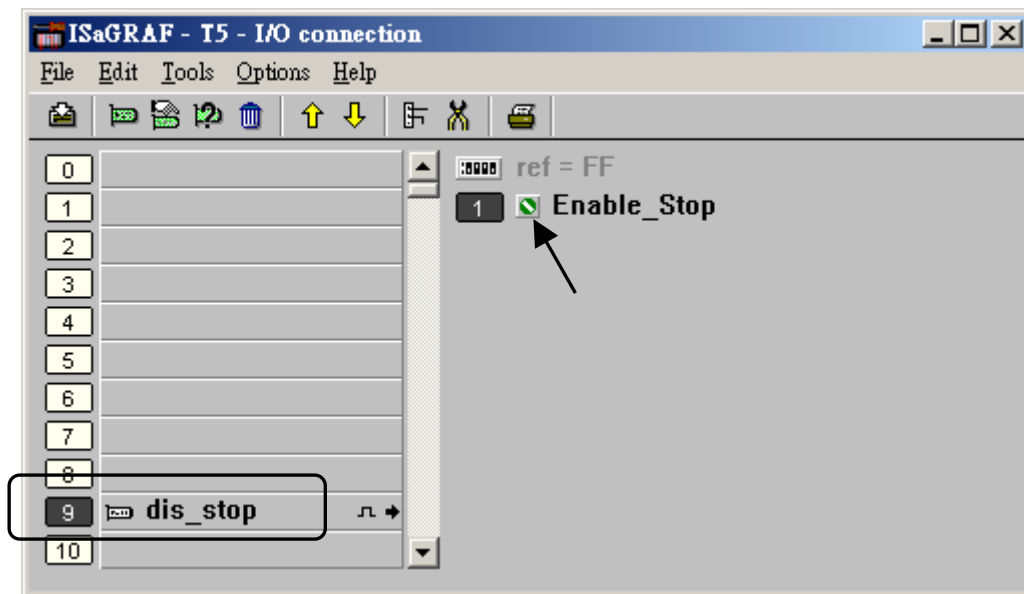
On the **IO connection** window of ISaGRAF, please connect "**vip**" and entering the IP which can get access to the PAC via Modbus TCP/IP protocol. If "**vip**" is not connected, any remote IP can get access to your PAC via Modbus TCP/IP protocol. If "**vip**" is connected and No IP is entered (all assigned as "N/A"), No HMI and ISaGRAF can get access to it by Modbus TCP/IP anymore.



Classification	ISaGRAF English FAQ-071						
Author	Chun Tsai	Version	1.0.0	Date	May 2008	Page	13 / 13

## 5.2 : Using “dis\_stop” to disable/enable the ISaGRAF Download function

For some reason, to prevent someone to use ISaGRAF software to stop or to download a different PAC project already running on the I-7188EG or I-8437/8837, the “Dis\_stop” can be applied . Please connect “dis\_stop” at a slot No. larger than 8 and init the channel value to become **TRUE**. Then stop/download command is not allowed in this PAC.



**To disable “Dis\_stop”** to accept stop/download command, please run the original ISaGRAF project to link to this PAC and set the channel value to become **False**.

Click the link for more ISaGRAF FAQ:

<http://www.icpdas.com/en/faq/index.php?kind=280#751>