

Classification	ISaGRAF FAQ-070						
Author	Chun Tsai	Version	1.0.0	Date	Jul. 2007	Page	1/ 12

How to do Time Synchronization and record state of many ISaGRAF PAC?

[Download FAQ-070 Demo](#)

1. Introduction

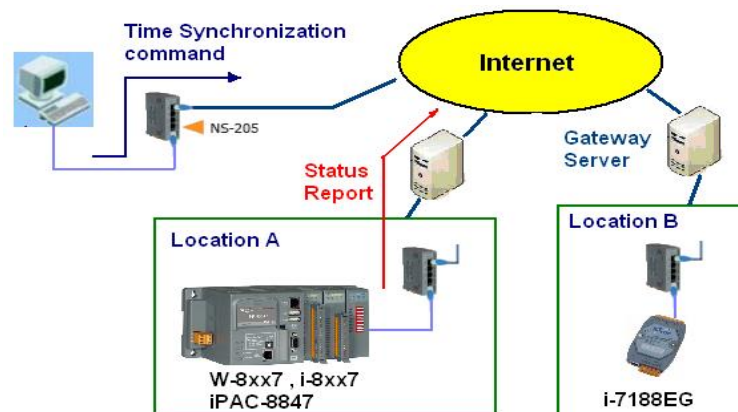
The method listed in this document is similar to FAQ-065

(http://www.icpdas.com/web/product/download/software/development_tool/isagraf/document/faq/faq065.pdf). Here use one PC/ Server to receive UDP report data from one or many ISaGRAF PAC (I-7188EG, I-8xx7, iPAC-8x47, W-8xx7). Then the PC/Server can send time synchronization command to the ISaGRAF PAC if necessary.

This demo sample apply one PC, IP = 10.0.0.91, Mask = 255.255.255.0 to link to two ISaGRAF PACs (could be any of W-8xx7, I-8x37, iPAC-8447/ 8847 or I-7188EG) in a local Ethernet area. The PAC 1: IP = 10.0.0.103, Mask = 255.255.255.0, PAC 2: IP = 10.0.0.105, Mask = 255.255.255.0



If this sample is applied in the Internet, then the PC/ Server must set to a fixed Internet IP address. And also each ISaGRAF PAC in the different local area should be possible to connect to the Internet (Normally is through the Gateway Server of the ISP company). Each ISaGRAF PAC (also named as Local controller) must set their proper Gateway IP address.



Classification	ISaGRAF FAQ-070						
Author	Chun Tsai	Version	1.0.0	Date	Jul. 2007	Page	2/ 12

2. Install software and hardware for demo testing

To run this demo sample correctly, please update your Controller's ISaGRAF driver to below version.

<https://www.icpdas.com/en/download/show.php?num=368&nation=US&kind1=&model=&kw=ISaGRAF>

I-7188EG:	Ver. 2.19 or later version
I-8437/ 8837:	Ver. 3.21 or later version
W-8xx7:	Ver. 3.38 or later version

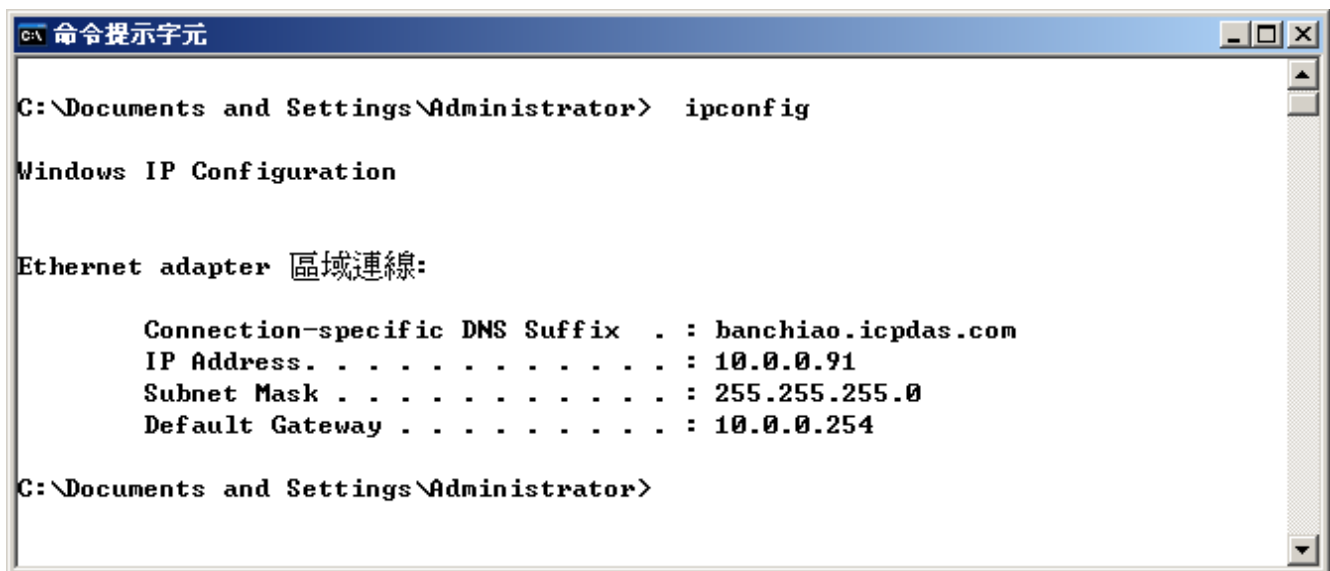
If you want to know more about the UDP protocol used in this sample, please refer to [Section 4](#).

The ISaGRAF demo programs used in this sample are as below.

PAC 1: wdm0_64a.pia (Please set PAC's IP as 10.0.0.103, Mask as 255.255.255.0)

PAC 2: wdm0_64b.pia (Please set PAC's IP as 10.0.0.105, Mask as 255.255.255.0)

Note: Sometimes PC/ Server reside at the Internet with a fixed Internet IP address. Then all the local controllers in the same application must assign its proper Gateway IP. The value of this "Gateway IP" can be found in a PC which is in the same local area with the local controller. First please set IP of that PC as DHCP (Obtain an IP address automatically), then open a Command Prompt, key-in "ipconfig" as below, then we got the Gateway IP setting.



```

C:\Documents and Settings\Administrator> ipconfig

Windows IP Configuration

Ethernet adapter 區域連線:

    Connection-specific DNS Suffix  . : banchiao.icpdas.com
    IP Address. . . . .               : 10.0.0.91
    Subnet Mask . . . . .             : 255.255.255.0
    Default Gateway . . . . .         : 10.0.0.254

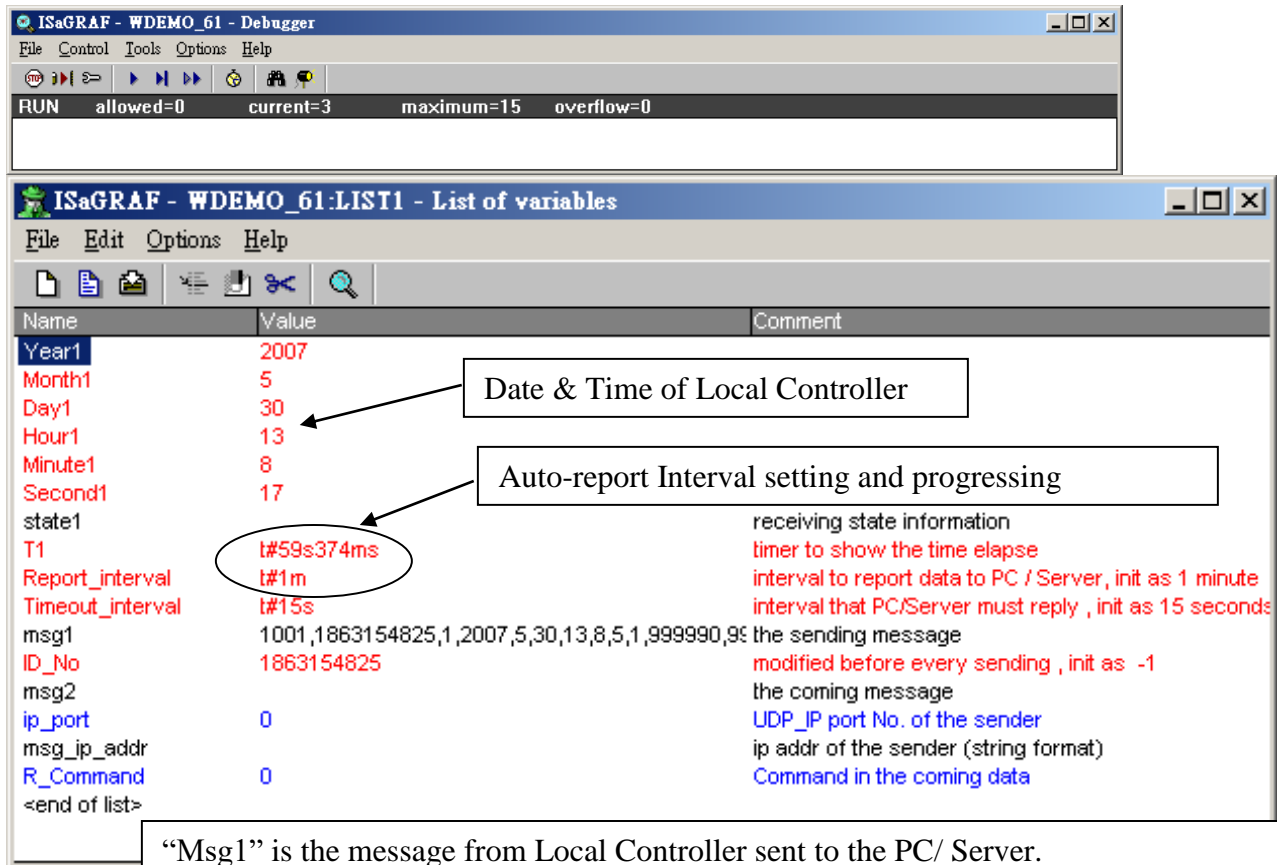
C:\Documents and Settings\Administrator>

```

If the PC resides at the Internet, it must use a fixed Internet IP. And also please modify the initial value of the "IP_correct_PC" variable and modify the IO connection – udp_ip – "to_ip1" value in the ISaGRAF project "wdm0_64a" and "wdm0_64b" to be the same as that Internet IP. Then re-compile them before downloading to the controller.

Classification	ISaGRAF FAQ-070						
Author	Chun Tsai	Version	1.0.0	Date	Jul. 2007	Page	3/ 12

If successfully download ISaGRAF program, the below similar window will show up.



“Msg1” is the message from Local Controller sent to the PC/ Server.
 “Msg2” is the reply message from the PC/ Server to Local Controller.
 “Msg_ip_addr” and “ip_port” are the source IP address and UDP port No. which sent message to the local controller. Normally, it is the IP and port No. of the central PC/ Server. If it is not, that means some other un-friendly station or PC sending UDP data to the Local Controller.
 “R_Command” is the <command> field in the message from the PC/ Server (Here in this demo is 2 or 4)

Then please run VB 6.0 demo_8 program in your testing PC (refer to [Section 3](#)).

Classification	ISaGRAF FAQ-070						
Author	Chun Tsai	Version	1.0.0	Date	Jul. 2007	Page	4/ 12

3. VB 6.0 demo program

Please finish the steps listed in [Section 2](#) first before doing the steps in this section.

Please set your PC's IP address to a fixed IP = 10.0.0.91, Mask = 255.255.255.0 for testing this demo.
(Because the ISaGRAF demo program "wdmo_64a" and "wdmo_64b" running in the Local Controller will report message to the PC with IP = 10.0.0.91 and with UDP port No. = 12001)

The VB 6.0 demo program "demo_8.exe" resides at ".\vb6_demo\demo_8\"
([Download FAQ-070 Demo](#))

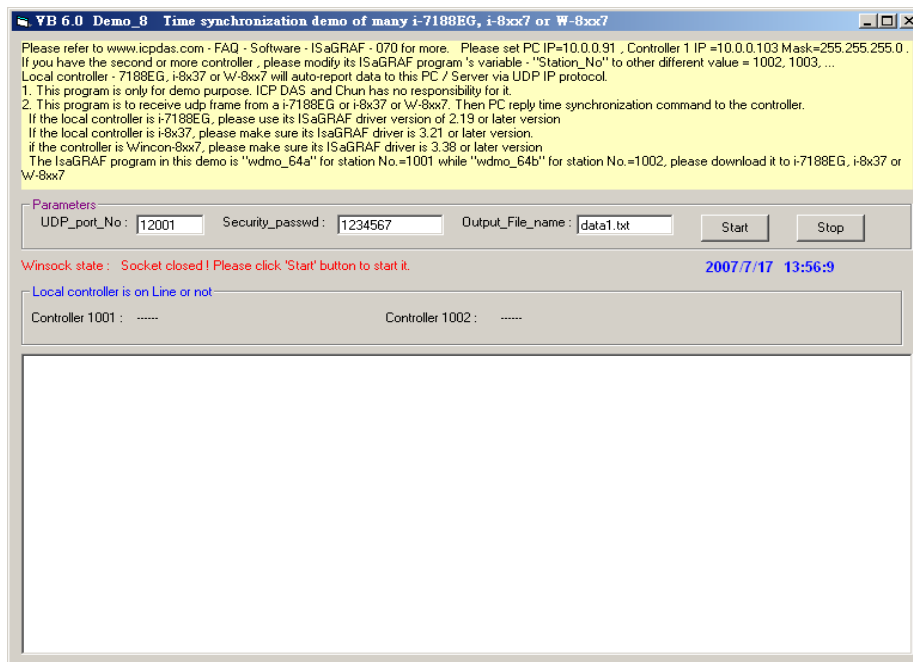
Please run MS. VB 6.0 development studio to open the source code of this "demo_8", the file is
".\vb6_demo\demo_8\demo_8.vbp"

After running this "demo_8.exe", a "VB 6.0 Demo_8" window will show up as below. Please enter the proper value of the following items and then click on "Start" to test it.

"UDP_port_No" is the UDP port No. which this PC is going to bind it to receive message coming from local controllers (value can be 1001 to 65535). This demo uses value of 12001.

"Security_passwd" is the protocol security password. Value can be 0, or 1 to 2147483647, or -2147483647 to -1. This demo uses value of 1234567.

"Output_File_name" is an option. You may specify it or leave it empty. If specifying a name to it, then demo_8.exe will create a new empty file to record all valid message from the local controllers.

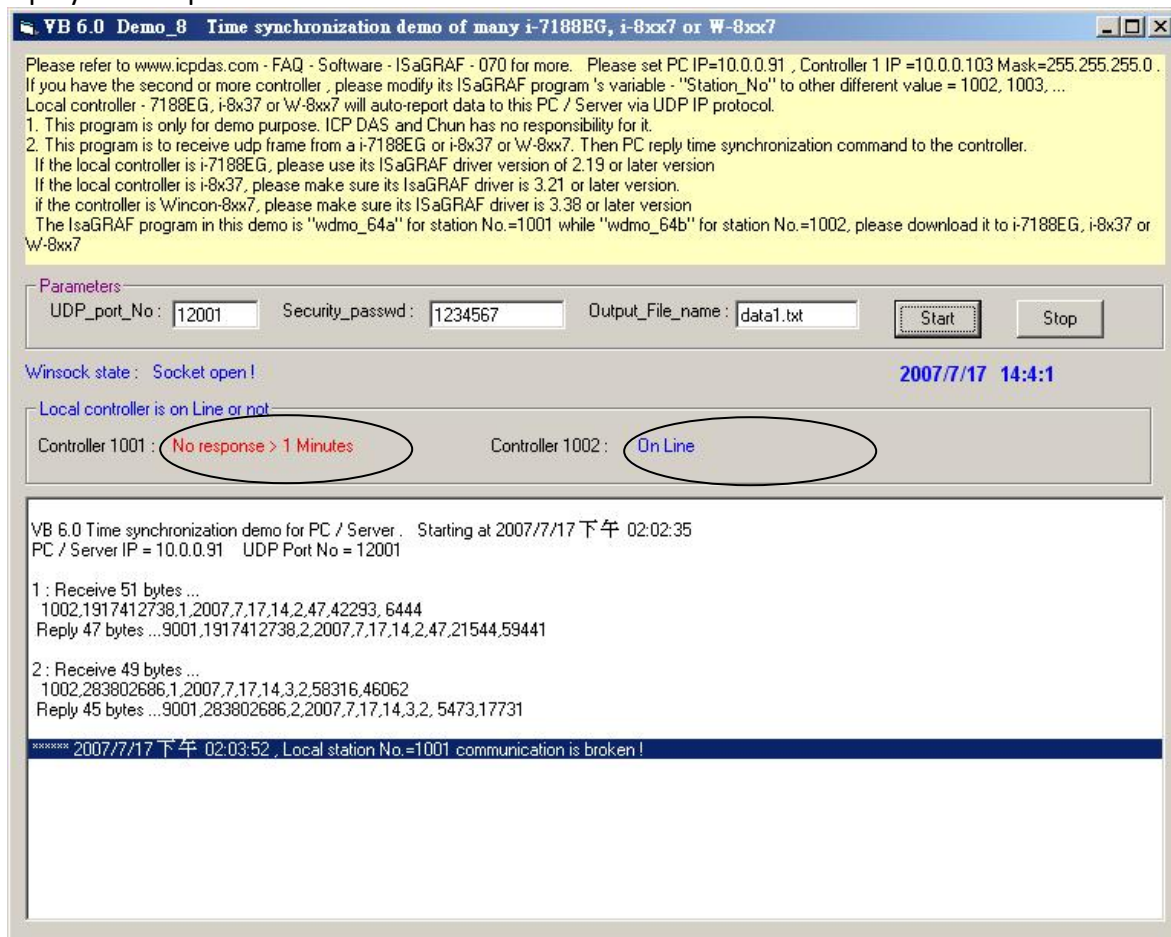


Classification	ISaGRAF FAQ-070						
Author	Chun Tsai	Version	1.0.0	Date	Jul. 2007	Page	5/ 12

How to test?

The local controller will send message to the PC/ Server when below events happen in this demo.

1. 15 seconds later after the Local controller is powered up. (This only deliver once)
 2. Send once at every minute past. (Continuously and periodically)
- A. Please wait about 2 minutes after running “demo_8.exe”. If the PAC 1 or PAC 2 connection is Ok, it will display “On Line”. If the PAC doesn’t report any message to the PC/ Server over one minute, it will display “No response”



- B. Please modify the time of this PC/ Server. For example, two hours moving ahead, then wait about one minute, you will see the connected PAC’s time will be modified to become the same time as the PC/ Server. The principle is every time the PAC sends message to the PC/ Server, the PC/ Server will calculate the time difference. If it is larger than 20 seconds, the PC/ Server will send a time synchronization command to the PAC. If the application is applied in a local Ethernet area, you may modify this allowed “time difference” to a

Classification	ISaGRAF FAQ-070						
Author	Chun Tsai	Version	1.0.0	Date	Jul. 2007	Page	6/ 12

smaller value, for example modifying from 20 to become 5 seconds. Please modify the below statement in the VB 6.0 demo_8 source code and re-compile it.

Modify	If Temp > 20 or Temp < -20 Then
To become	If Temp > 5 or Temp < -5 Then

C. Please observe if receiving a message every minute.

4. UDP protocol definition in the demo listed in this document

This protocol definition is valid for the ISaGRAF demo program “wdmo_64a” and “wdmo_64b” and VB 6.0 demo program “demo_8”.

- 1) Local Controller is as UDP Client, while PC/ Server is as UDP Server. Only Local Controller can auto-send data (message/string) to the PC/ Server (The message variable - “IP_correct_PC” and integer variable - “Port_correct_PC” in the ISaGRAF demo program “wdmo_64a” and “wdmo_64b” specify the IP address and UDP port No. of the target PC/ Server. And also there is similar definition of the target PC/ Server in the ISaGRAF IO connection window - “udp_ip”).
- 2) PC/ Server must reply a message with <Command> = 2 or 4 to the local controller in 15 seconds after it receives a valid message from the local controller. The replied message must contain the exact same <ID No.> as the <ID No.> it received from the local controller. The local controller will drop the replied message with incorrect <ID No.>. If the local controller doesn’t receive a valid replied message from the PC/ Server in 15 seconds, it will send message once to the PC/ Server with a different <ID No.>. Then if PC/ Server still not replied it in 15 seconds, local controller will continuously send message again until it receives a valid replied message. (The timer variable - “Timeout_interval” in the ISaGRAF demo program “wdmo_64a” and “wdmo_64b” defines this Timeout value)
- 3) The local controller will send message to the PC/ Server when below events happen in this demo.
 - a. 15 seconds later after the Local controller is power up. (This only deliver once)
 - b. Send once at every minute past. (Continuously and periodically)
- 4) UDP message format of Local Controller sending to the PC/ Server

Security_passwd: Must be specified as the same value in the ISaGRAF IO connection window – “udp_ip” and in the VB demo program to communicate well. Value can be 0: means “No encoding” (it is not safe), or 1 to 2147483647, or -2147483647 to -1 (none-zero value means “with encoding”, it is much safe).

If setting as a none-zero value, please refer to the “convert_to_udp_deliver_buf()”, “convert_back_udp_deliver_buf()” and “udp_ip_crc()” function in the VB 6.0 “demo_8” for its encoding algorithm.

Classification	ISaGRAF FAQ-070						
Author	Chun Tsai	Version	1.0.0	Date	Jul. 2007	Page	7/ 12

If setting "Security_passwd" as 0, every delivered message cannot exceed 255 bytes.

If setting "Security_passwd" as none-zero value, every delivered message cannot exceed 259 bytes. The last added 4-bytes is the <4-byte-Checksum > calculated by the "udp_ip_crc()" function.

Local Controller will send the below format to the PC/ Server.

Security_passwd is 0: (No 4-byte-Checksum at the end)

<Station_No of local controller>,<ID No.>,<Command>,
<Year>,<Month>,<Day>,<Hour>,<Minute>,<second>,
<User-defined CRC>

For example:

1001,850334470,1,2007,5,30,17,31,51,46677,18632

It means,

<Station_No of local controller> is 1001

<ID No.> is 850334470

<Command> is 1

Controller's date and time is 2007/5/30, 17:31:51

< User-defined CRC > is 46677, 18632

Security_passwd is not 0: (With 4-byte-Checksum at the end)

<Station_No of local controller>,<ID No.>,<Command>,
<Year>,<Month>,<Day>,<Hour>,<Minute>,<second>,
<User-defined CRC><4-byte-Checksum>

<Command> definition:

1: Local Controller report data to the PC/ Server

<User-defined CRC> definition:

Can be defined as a different algorithm by the User. This demo apply the following algorithm
(Please apply a different algorithm in real application for safety)

Value is fixed as 11 bytes (Character). It contains two value of 0 to 65535 separated by a ","

For example,

value_1 value_2 fixed length of 11 bytes (Character)

Classification	ISaGRAF FAQ-070						
Author	Chun Tsai	Version	1.0.0	Date	Jul. 2007	Page	8/ 12

0	0	:	'	0,	0' (with 4 Space Char. before'0')
1	1	:	'	1,	1' (with 4 Space Char. before'1')
21	21	:	'	21,	21' (with 3 Space Char. before'2')
321	321	:	'	321, 321'	(with 2 Space Char. before'3')
4321	4321	:	'	4321, 4321'	(with 1 Space Char. before'4')
54321	65535	:	'	54321,65535'	(No Space Char.)

Below steps - (a) to (d) is to get value 1, while - (e) is to get value 2

(Please apply a different algorithm in real application for safety)

(a) extract the string not including the <User-defined CRC> and <4-byte-Checksum> into byte array - user_buf[] (for convient, we call this byte array as "user_buf[]")

(b) replace user_buf[3] as user_buf[3] xor 100

That is user_buf[3] = user_buf[3] ^ (unsigned char)100 ;
(User may use [2], [4],..., and may be not using 100,... whatever,
this depends on your own decision. Please use your own algorithm for safety.)

(c) replace user_buf[7] as user_buf[7] xor 200

That is user_buf[7] = user_buf[7] ^ (unsigned char)200;
(user may use [5], [6],..., and may not use 200,... whatever,
this depends on your own decision. Please use your own algorithm for safety.)

(d) Calculate <User-defined CRC> as two byte => <CRC_Hi><CRC_Lo>

Then <User-defined CRC> = 256*<CRC_Hi> + <CRC_Lo>.

It is a value between 0 and 65535.

(e) using a different algorithm to get value 2

proceed (a), then proceed (b) by using user_buf[4]=user_buf[4]^(unsigned char)48

then proceed (c) by using user_buf[6]=user_buf[6]^(unsigned char)197

then proceed (d). Then we get value 2. It is a value between 0 and 65535.

(Please use your own algorithm for safety.)

5) UDP message format of the PC/ Server replying to local controller

Security_passwd: Using the same definition as item 4.

PC/ Server will reply below format to the local controller.

Security_passwd is 0: (No 4-byte-Checksum at the end)

Classification	ISaGRAF FAQ-070						
Author	Chun Tsai	Version	1.0.0	Date	Jul. 2007	Page	9/ 12

<Station_No of PC/Server>,<Same ID No. from the local controller>,<Command>,
 <Year>,<Month>,<Day>,<Hour>,<Minute>,<second>,
 <User-defined CRC>

For example,

9001,519805546,2,2007,5,30,18,59,53, 6830,42679

It means,

< Station_No of PC/Server > is 9001

<ID No.> is 519805546

<Command> is 2

Date and Time in PC/Server is 2007/5/30, 18:59:53

< User-defined CRC > is 6830,42679 (there is one Space Char. Before the first "6")

Security_passwd is not 0: (With 4-byte-Checksum at the end)

<Station_No of PC/Server>,<Same ID No. from the local controller>,<Command>,
 <Year>,<Month>,<Day>,<Hour>,<Minute>,<second>,
 <User-defined CRC><4-byte-Checksum>

<Command> definition:

2: to inform the local controller that PC/ Server receive its correct data.

4: to inform the local controller that its date and time differ more than 20 seconds than the PC/ Server, please adjust controller's date and time and then send data to PC/ Server once again

<User-defined CRC> definition: Using the same definition as item 4.

Classification	ISaGRAF FAQ-070						
Author	Chun Tsai	Version	1.0.0	Date	Jul. 2007	Page	10/ 12

5. Controller Ethernet security

5.1: Modbus TCP/IP security

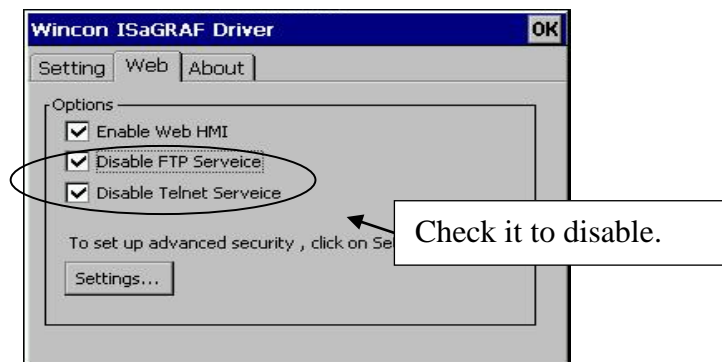
There are some ways user can get access to the Wincon-8xx7 via its Ethernet port.

1. Using Modbus TCP protocol at port No. = 502. (ISaGRAF and other HMI can do this)
2. Using ftp (for example, keying "ftp://10.0.0.103" on the Internet Explorer)
3. Using telnet (for example, key in "telnet 10.0.0.103 in the "command" window)
4. Using the Web server (The Web HMI does)

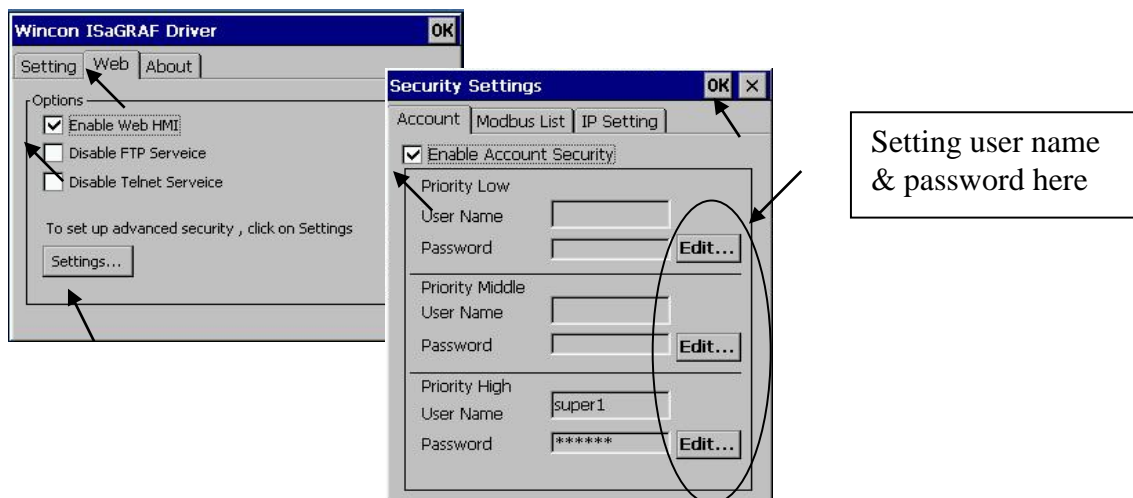
Note:

1. While for I-8437-80/ 8837-80, I-8437/8837 and I-7188EG, only item 1 is possible.
2. If the controller is W-8x47/8x46, when using "ftp", "telnet", "Web HMI" & "Modbus TCP/IP", please connect your PC/HMI to W-8x47/8x46's "LAN1" port, and please use "NS-205" or "NS-208" Ethernet switch.

For safety, recommend to disable item 2 and 3 at run time for Wincon.



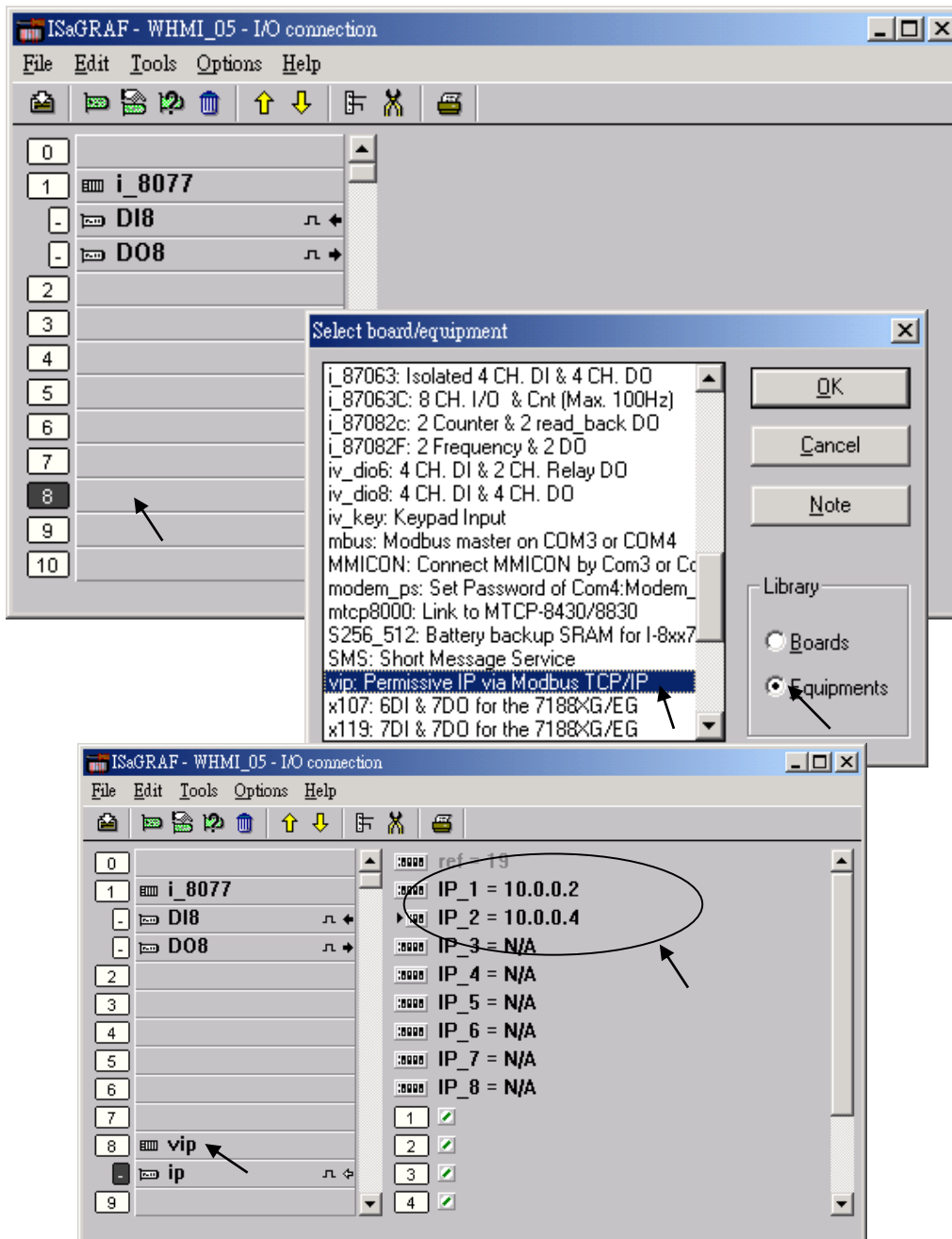
And about item 4, please set proper username & password for the Wincon Web HMI.



Classification	ISaGRAF FAQ-070						
Author	Chun Tsai	Version	1.0.0	Date	Jul. 2007	Page	11/ 12

About item 1, user may set up to 8 IP address for ISaGRAF or other HMI to get access to the I-8x37, I-7188EG & W-8xx7 via the Modbus TCP/IP protocol as below.

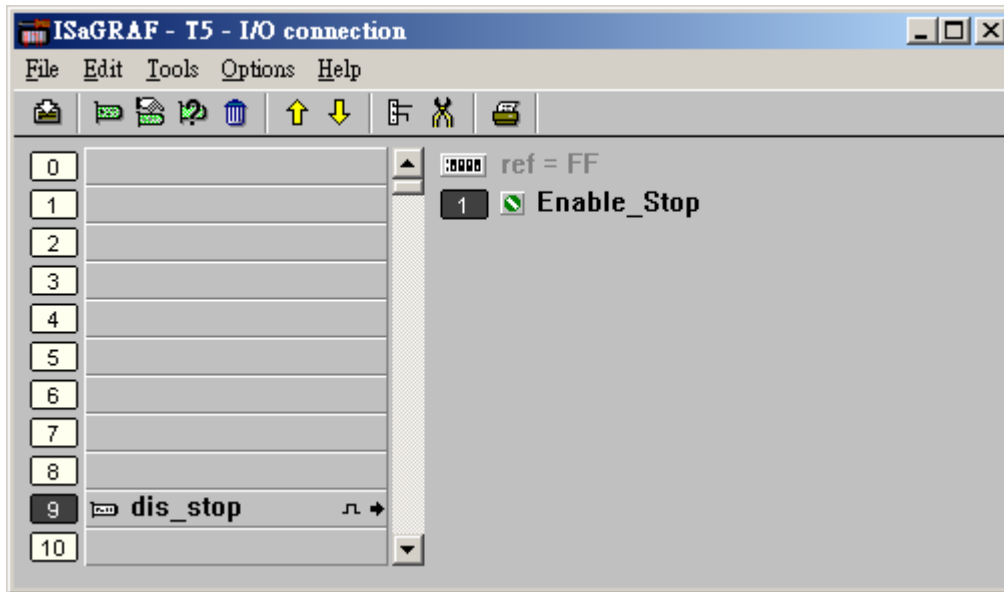
On the IO connection window of ISaGRAF, please connect “vip” and entering the IP which can get access to the controller via Modbus TCP/IP protocol. If “vip” is not connected, any remote IP can get access to your controller via Modbus TCP/IP protocol. If “vip” is connected and No IP is entered (all assigned as “N/A”), No HMI and ISaGRAF can get access to it by Modbus TCP/IP anymore.



Classification	ISaGRAF FAQ-070						
Author	Chun Tsai	Version	1.0.0	Date	Jul. 2007	Page	12/ 12

5.2: Using “dis_stop” to disable/ enable the ISaGRAF Download function

For some reason, to prevent someone to use ISaGRAF software to stop or to download a different controller project already running in the I-7188EG, I-8437/8837 and W-8xx7, the “Dis_stop” can be applied. Please connect “dis_stop” at a slot No. larger than 8 and init the channel value to become TRUE. Then stop/ download command is not allowed in this controller.



To disable “Dis_stop” to accept stop/ download command, please run the original ISaGRAF project to link to this controller and set the channel value to become False.