

Classification	ISaGRAF English FAQ-057						
Author	Chun Tsai	Version	1.0.0	Date	Oct. 2010	Page	1 / 16

How to record I-8017H 's Ch.1 to Ch.4 voltage input in a user allocated RAM memory in the ISaGRAF PAC? The sampling rate is one record every 0.01 second. The record period is 1 to 10 minutes. Then PC can download this record and display it as a trend curve diagram by M.S. Excel.?

[Download FAQ-057 Demo.](#)

Note: The WinCon-8xx7 has been phased out, it's recommended to use XP-8x37-CE6.

Visit to the following webpage to download files.

Demo:

<http://www.icpdas.com/en/download/show.php?num=1005&nation=US&kind1=&model=&kw=isagraf>

ISaGRAF FAQ:

<http://www.icpdas.com/en/faq/index.php?kind=280#751> (FAQ-057)

Driver:

<http://www.icpdas.com/en/download/show.php?num=368&nation=US&kind1=&model=&kw=isagraf>

The "Whmi_13.pia" and VB6 - "Demo_5" reside at the 'demo' or 'vb6_demo_pc' folder. If using Web HMI in this demo, the Web HMI codes resides at the 'webhmi_demo' folder. Please refer to Chapter 3, 4 and 5 of the ISaGRAF user manual.

<http://www.icpdas.com/en/download/index.php?nation=US&kind1=6&kind2=8&model=&kw=isagraf>

If new c-function of Msg_F, Msg_N, ARY_F_R, and AFY_F_W doesn't exist in ISaGRAF on your PC, please visit to the Driver page to download I/O libraries. Then run "setup.exe" inside it to re-install all new ISaGRAF c-function & I/O boards definition to your ISaGRAF workbench.

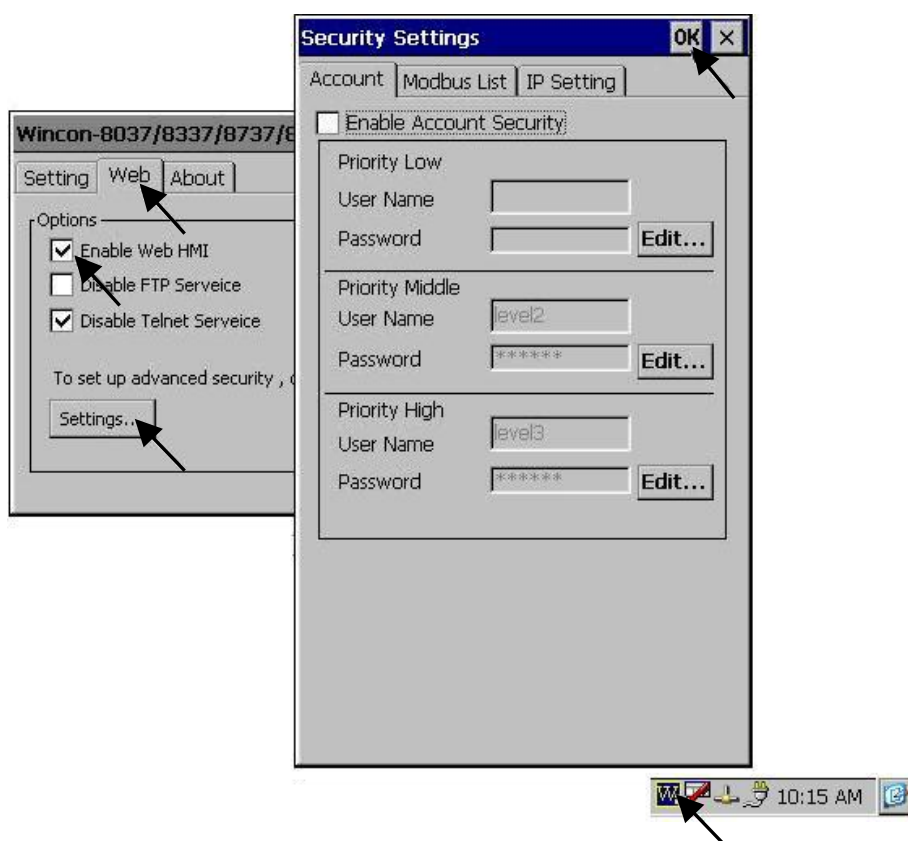
We use "Variable array" in this demo program, please refer to section 2.6 of the ISaGRAF user manual or [FAQ-039](#) for more information about "Variable array" .

Classification	ISaGRAF English FAQ-057						
Author	Chun Tsai	Version	1.0.0	Date	Oct. 2010	Page	2 / 16

How to test this demo ?

The following steps is only for using Web HMI as Human-Machine-Interface. If you are using VB 6.0 – “Demo_5” as HMI , please run it (Demo_5.exe) in your PC and only do procedure listed in step 1 , step 3 and step 6 .

1. Please plug one I-8024 in W-8xx7 's Slot 2, one I-8017H in Slot 3. Then connect Ch1. to Ch.4 voltage output of I-8024 to Ch1. to Ch.4 of I-8017H. Then power up Wincon, Check “**Enable Web HMI**” option as below. For demo purpose, **please Do Not check “Enable Account Security”**.



2. Copy all files of Web HMI's Demo_13 to WinCon's \CompactFlash\Temp\HTTP\WebHMI\ folder by ftp utility (For example, run <ftp://10.0.0.103> in Internet Explorer)

Web HMI codes “whim_13” resides at the ‘webhmi_demo’ folder in the zip file.

<http://www.icpdas.com/en/download/show.php?num=1005&nation=US&kind1=&model=&kw=isagraf>

There are 7 files plus 2 folder should be copied to WinCon's \CompactFlash\Temp\HTTP\WebHMI\

Main.htm, menu.htm, index.htm, login.htm, main.dll, login.dll, whim_filter.dll
“img” & “msg” folder

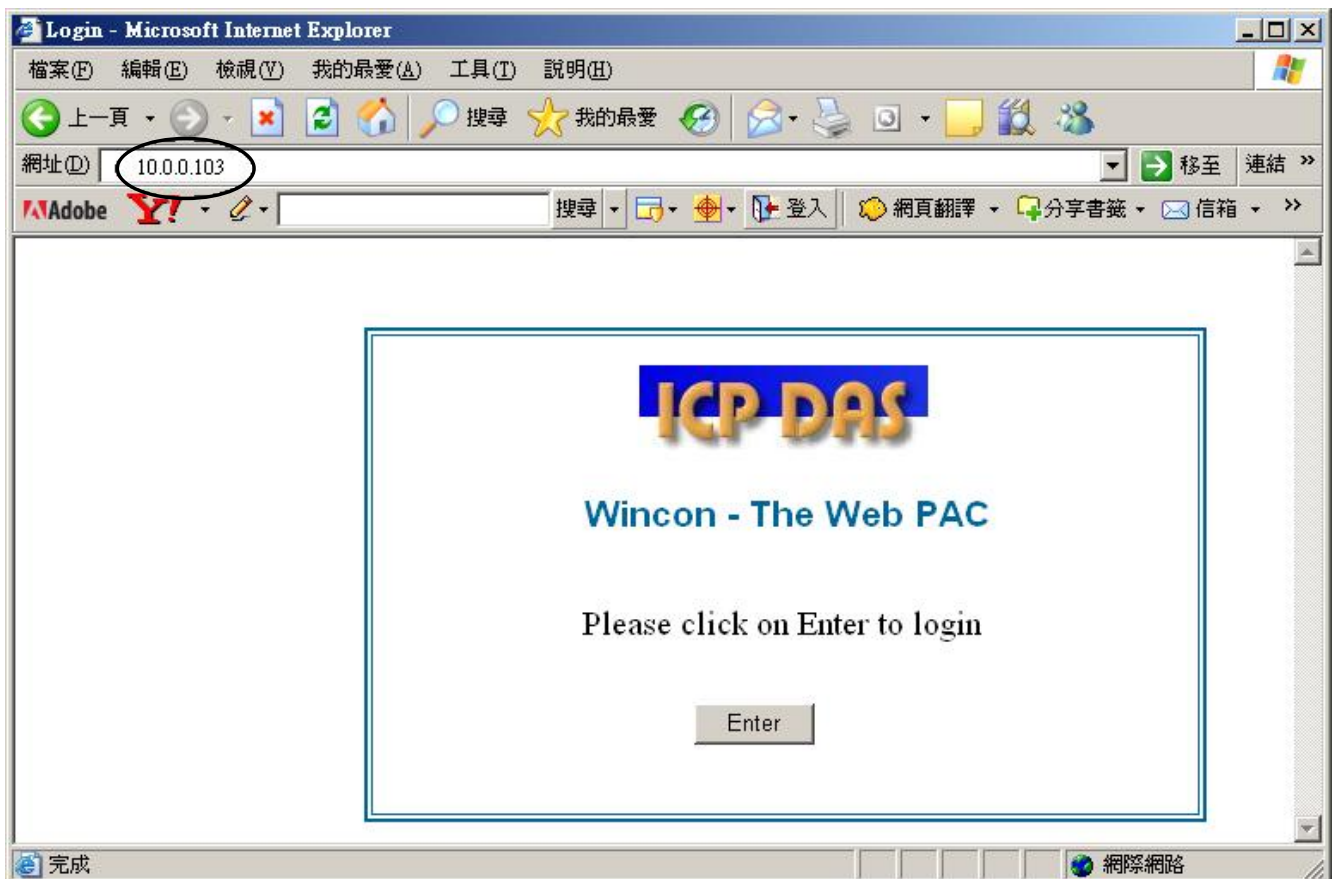
Classification	ISaGRAF English FAQ-057						
Author	Chun Tsai	Version	1.0.0	Date	Oct. 2010	Page	3 / 16

- Download ISaGRAF project “whim_13” to W-8xx7.
(If using Web HMI as HMI, please finish procedure listed in step 2 first, then do step 3)

The “Whmi_13.pia” resides at the ‘webhmi_demo’ folder in the zip file.

<http://www.icpdas.com/en/download/show.php?num=1005&nation=US&kind1=&model=&kw=isagraf>

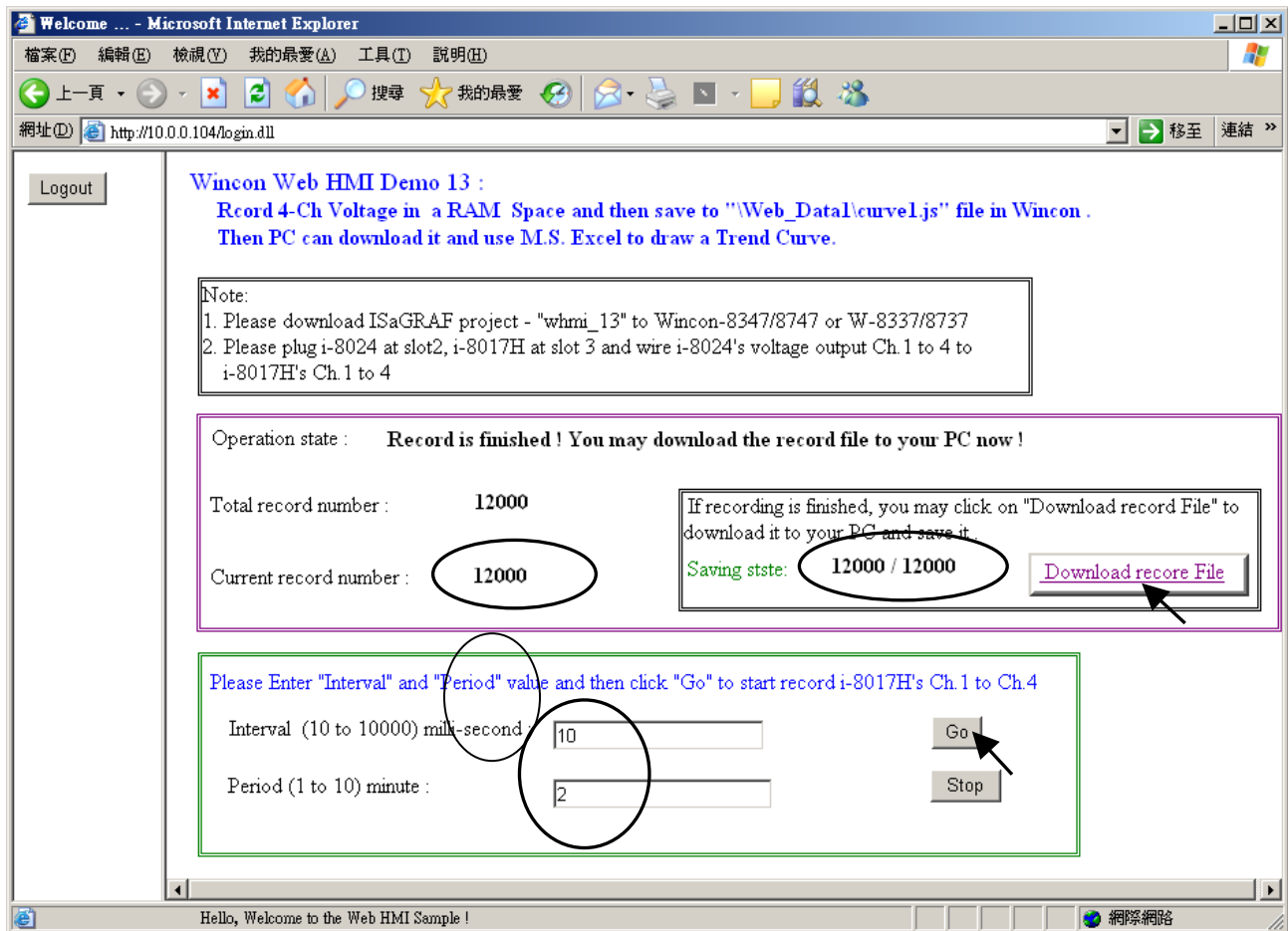
- PC run Internet Explorer (I.E. version should be 5.0 or later version). Enter W-8xx7 IP.
If connecting well, click on “Enter”.



- Then please enter proper “Interval” value. Unit is 0.001 second (1 milli-second). For example, if enter 10, it means to store one record every 10 ms. The “Period” is the time period to record. Unit is minute. Then please click on “Go” to start recording. W-8xx7 will then output different voltage in I-8024 Ch.1 to Ch.4.

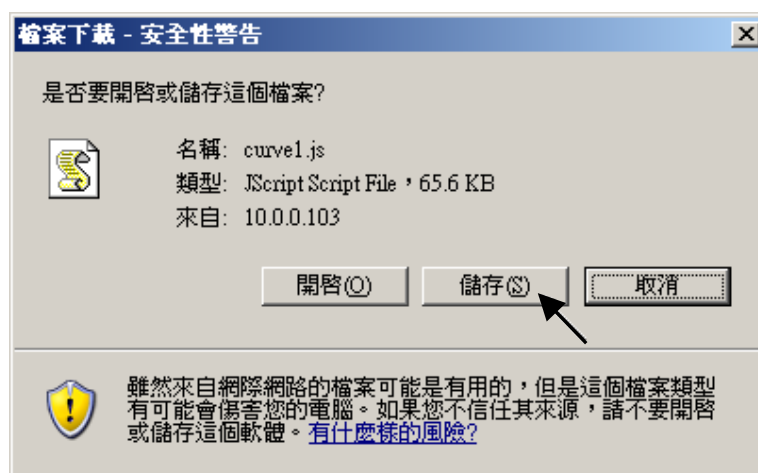
If user has finished procedure listed in step 1 – “connect Ch1. to Ch.4 voltage output to Ch1. to Ch.4 of I-8017H”, the I-8017H Ch1. to Ch.4 ‘s voltage input will also change during this period. And they will be recorded.

Classification	ISaGRAF English FAQ-057						
Author	Chun Tsai	Version	1.0.0	Date	Oct. 2010	Page	4 / 16



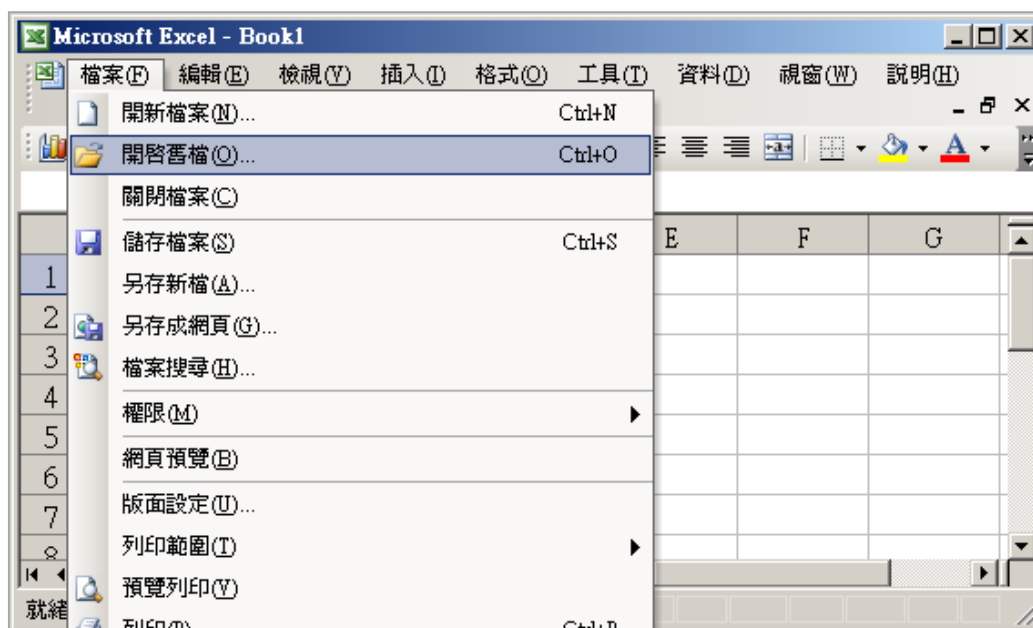
During the recording period, the “**Current record number**” value will count up. If it reaches the value of “**Total record number**”, it means recording is finished. Then the ISaGRAF program will store these records to a RAM file automatically. You can see the progress in “**Saving state**”.

If all done, please click on “**Download record File**” to download this record file to your PC.

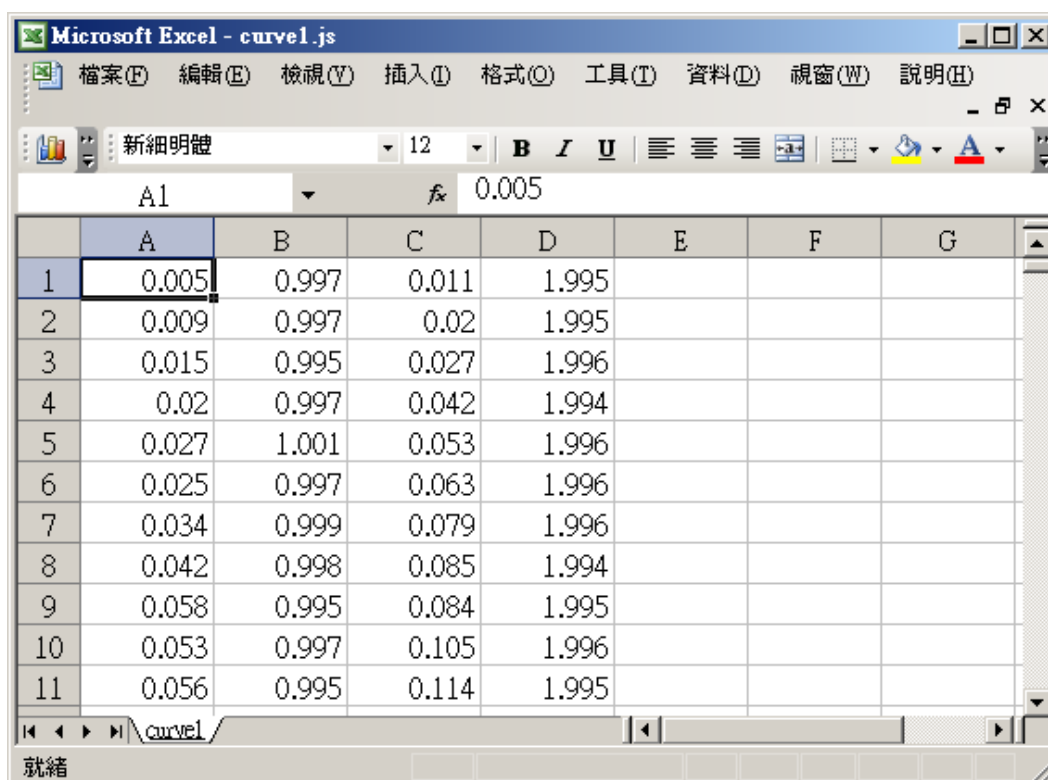


Classification	ISaGRAF English FAQ-057						
Author	Chun Tsai	Version	1.0.0	Date	Oct. 2010	Page	5 / 16

6. Then please open this record file - “curver1.js” on M.S. Excel.

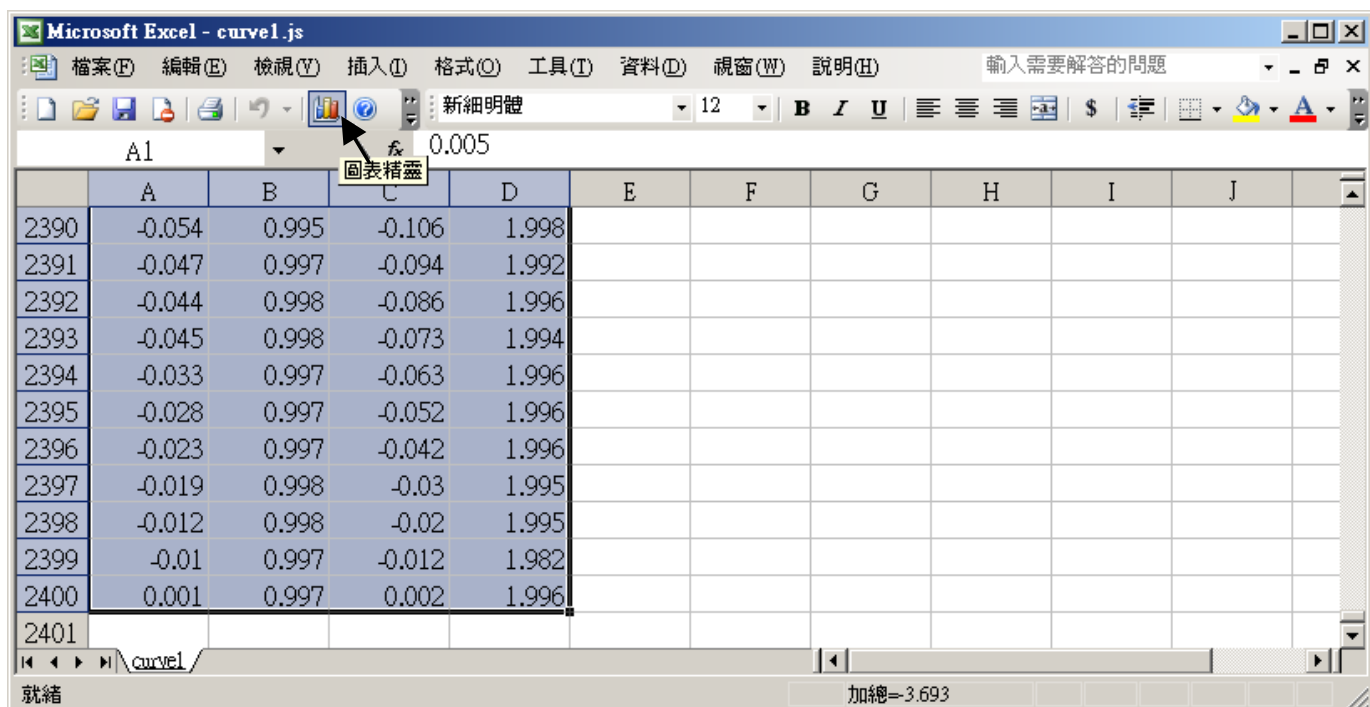


Please click on the first data at the left-top position. Then press and hold in “Shift”, and at the same time press “Ctrl” – “End”. You will see all data been selected.

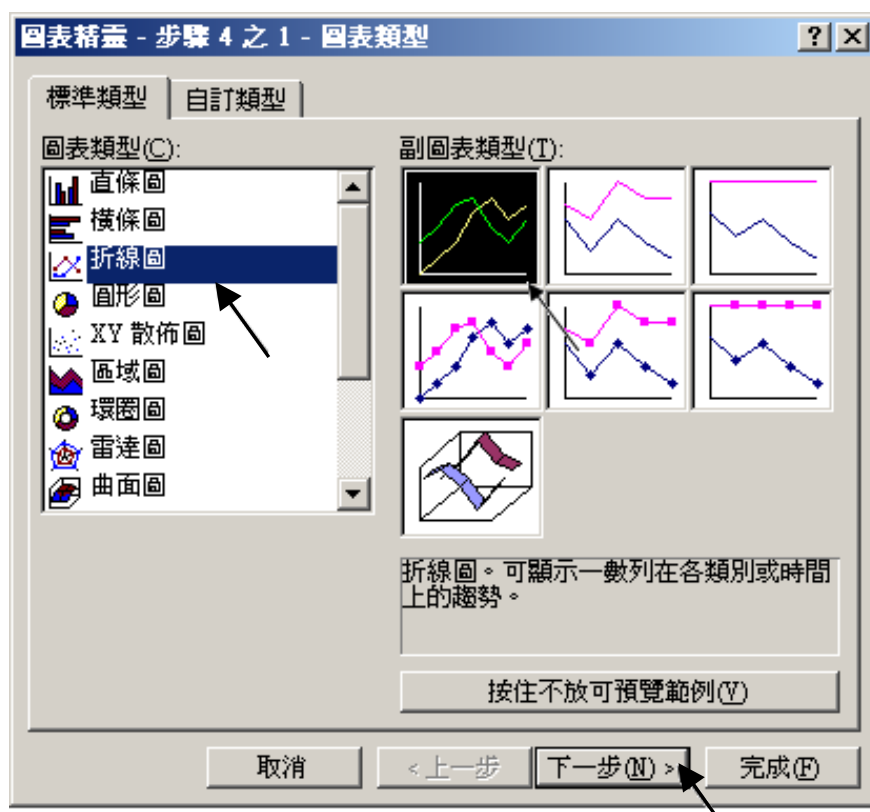


Classification	ISaGRAF English FAQ-057						
Author	Chun Tsai	Version	1.0.0	Date	Oct. 2010	Page	6 / 16

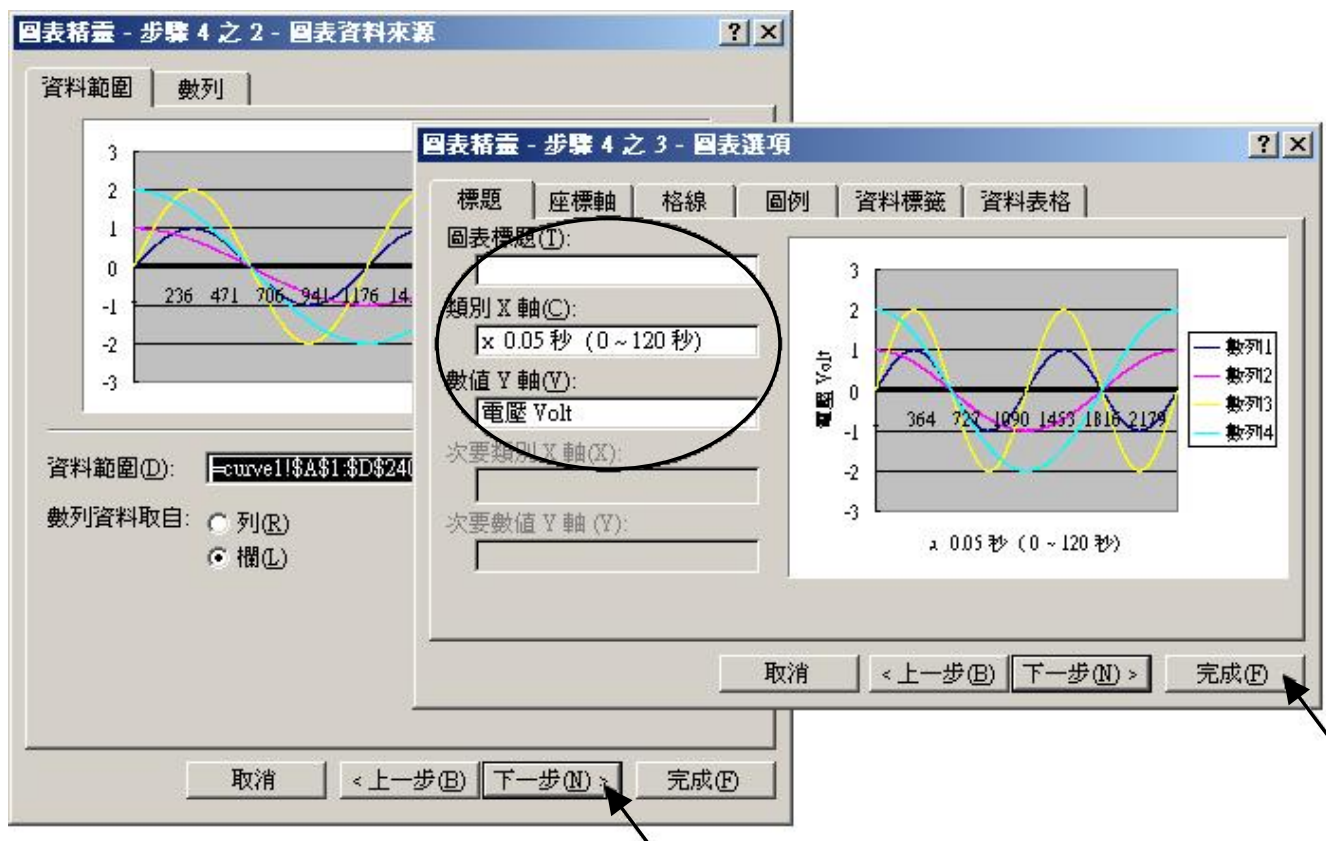
Then click on



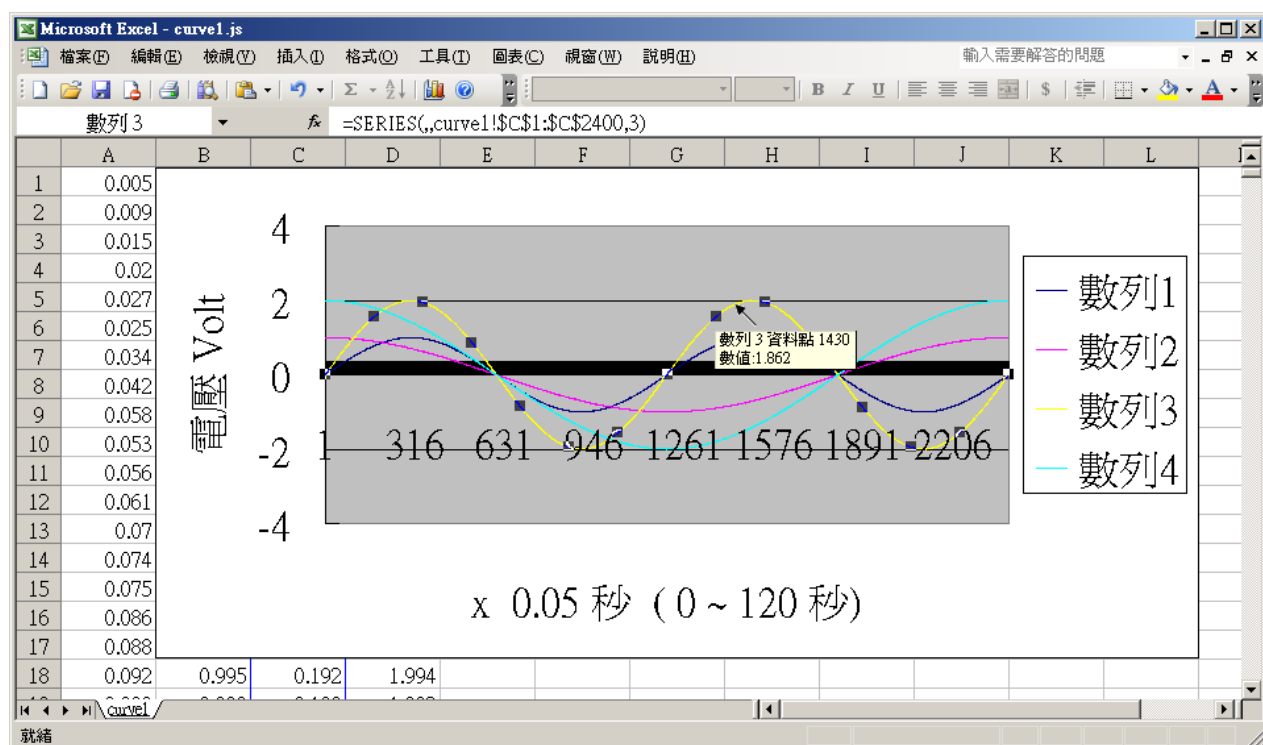
Please select the correct diagram on the left-hand side. And check the left-top type on the right-hand side. Then go Next .



Classification	ISaGRAF English FAQ-057						
Author	Chun Tsai	Version	1.0.0	Date	Oct. 2010	Page	7 / 16

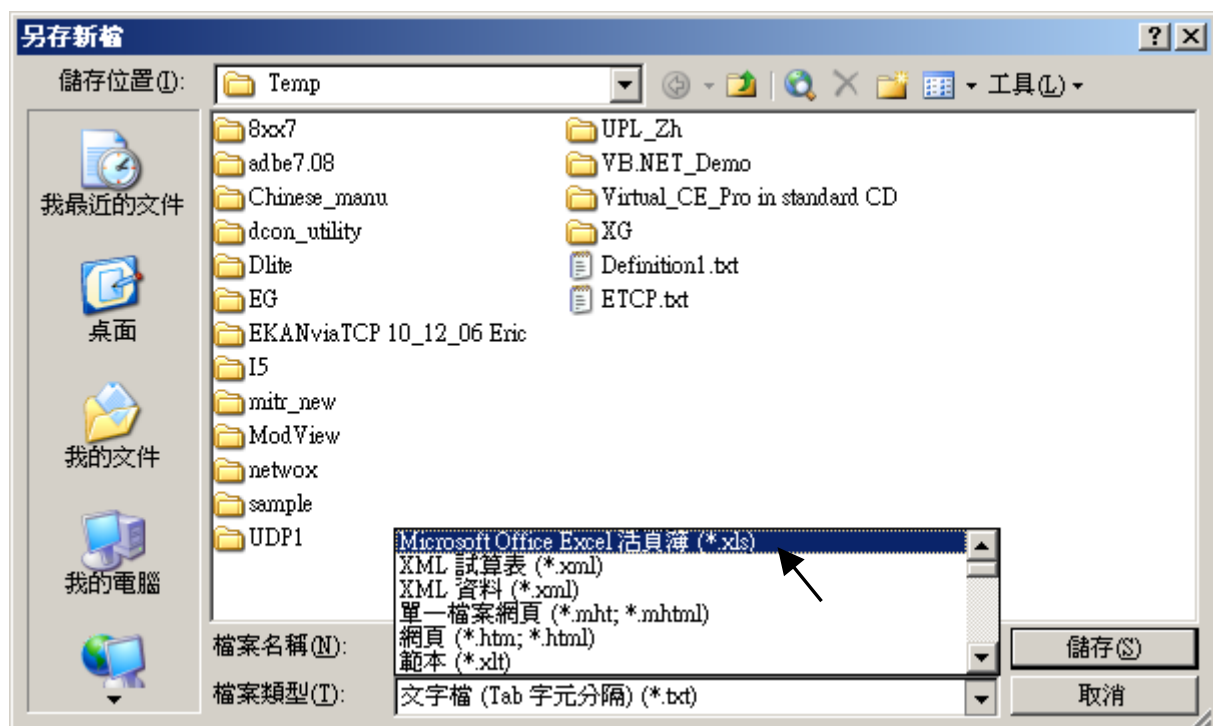
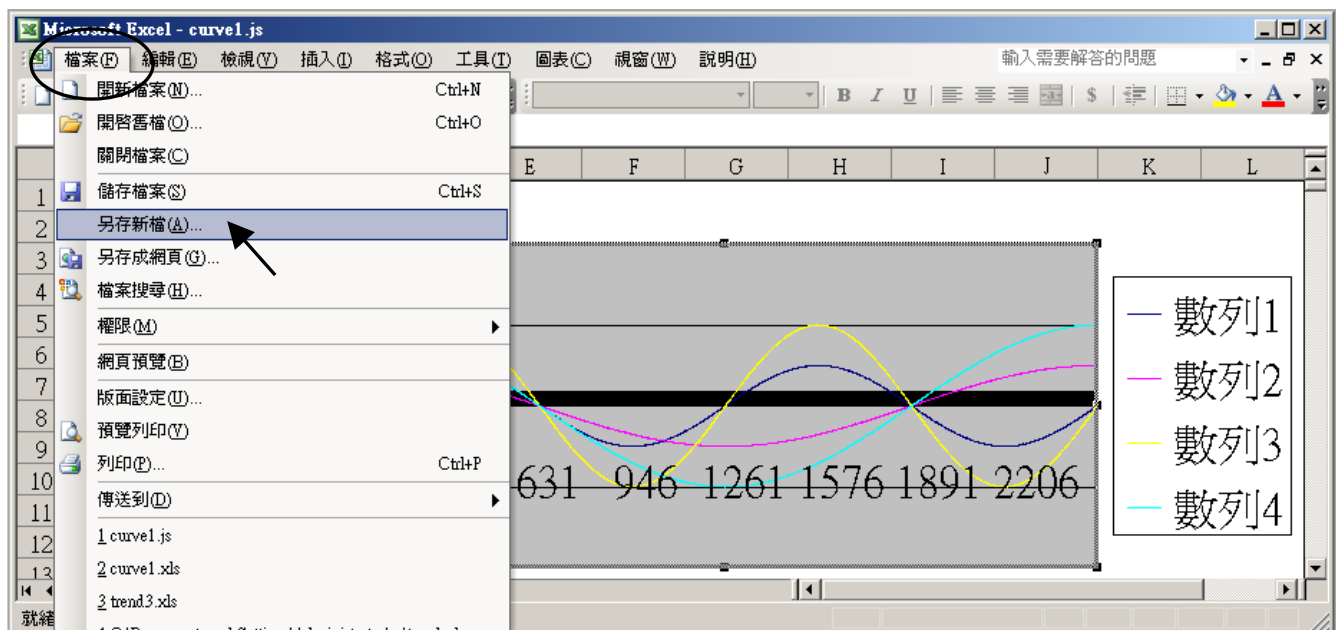


By the procedure, you will get the trend curve as the below window. You can modify its size, or check at any trend line. If you move your mouse to point at some position at the trend line, the related data is shown.



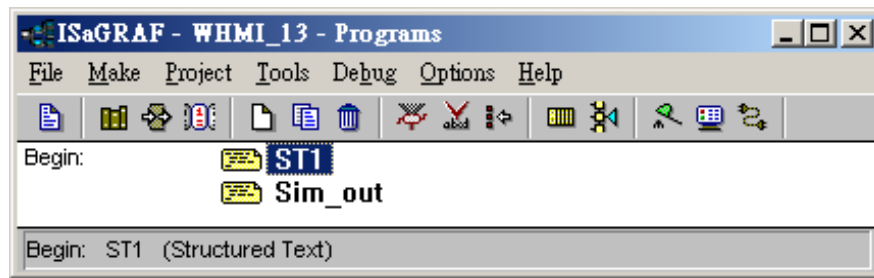
Classification	ISaGRAF English FAQ-057						
Author	Chun Tsai	Version	1.0.0	Date	Oct. 2010	Page	8 / 16

Please save this trend curve diagram as a “Microsoft Office Excel (*.xls)” format. Then at any later time, you can open it to display the trend curve directly.



Classification	ISaGRAF English FAQ-057						
Author	Chun Tsai	Version	1.0.0	Date	Oct. 2010	Page	9 / 16

ISaGRAF project architecture:



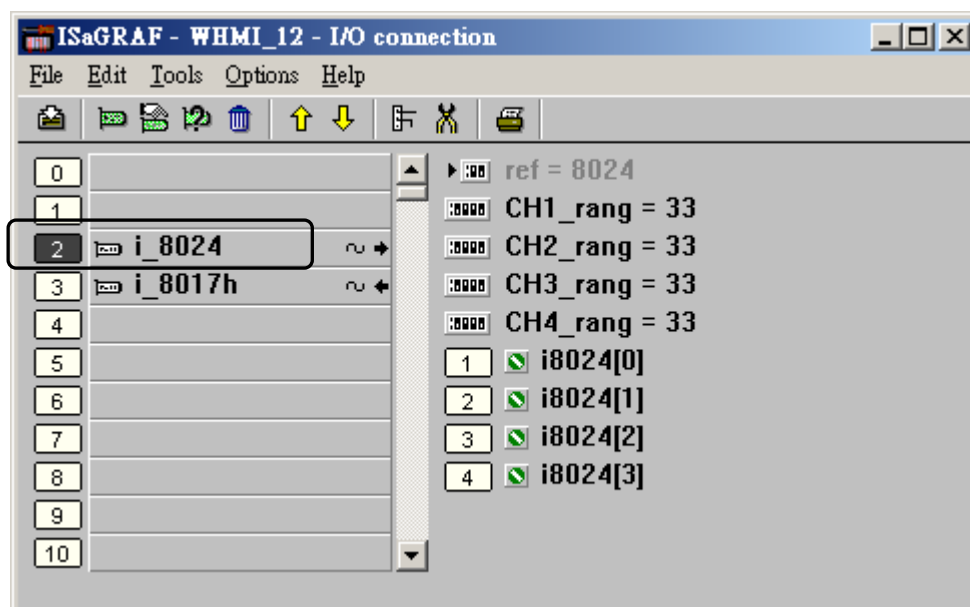
Variables :

Name	Type	Attribute	Description
Go1	Boolean	Internal	Set as True to start, addr defined as 21 (Hex. is 15)
Stop1	Boolean	Internal	Set as True to stop, addr defined as 22 (Hex. is 16)
TMP	Boolean	Internal	Internal use
INIT	Boolean	Internal	Init as True
Save_file1	Boolean	Internal	The IsaGRAF program will set this value to True to store records to a RAM Disk File
MUM_CH	Integer	Constant	How many chanel in I-8017H to record ? We use 4 channels in this demo (Ch.1 to 4)
File1	Integer	Internal	File ID
STEP1	Integer	Internal	Recording state. 0:No action , 1:recording , 2:finished
Period1	Integer	Internal	How long to record ? unit is minute, addr as 3
Interval1	Integer	Internal	How long to save a record ? unit is ms, addr as 1
Total_record1	Integer	Internal	How many records in this recording action? This value is calculated by the IsaGRAF program automatically. addr declared as 5
Record_cnt1	Integer	Internal	Current finished record count. addr declared as 7
ii & ii2	Integer	Internal	To use in “for” loops
i8017H[0..7]	Integer	Input	Variable array, Dim as 8. link to I-8017H ‘s Ch1 to Ch. 8
Volt1[0..7]	REAL	Internal	Variable array, Dim declared as 8. The voltage value converted from “i8017H[0..7]”
i8024[0..3]	Integer	Output	Variable array, Dim declared as 4. link to I-8024 ‘s Ch1 to Ch. 4
Save_cnt1	Integer	Internal	Current saving record amount in the RAM disk File, addr declared as 9
TMP_v	Integer	Internal	Internal use

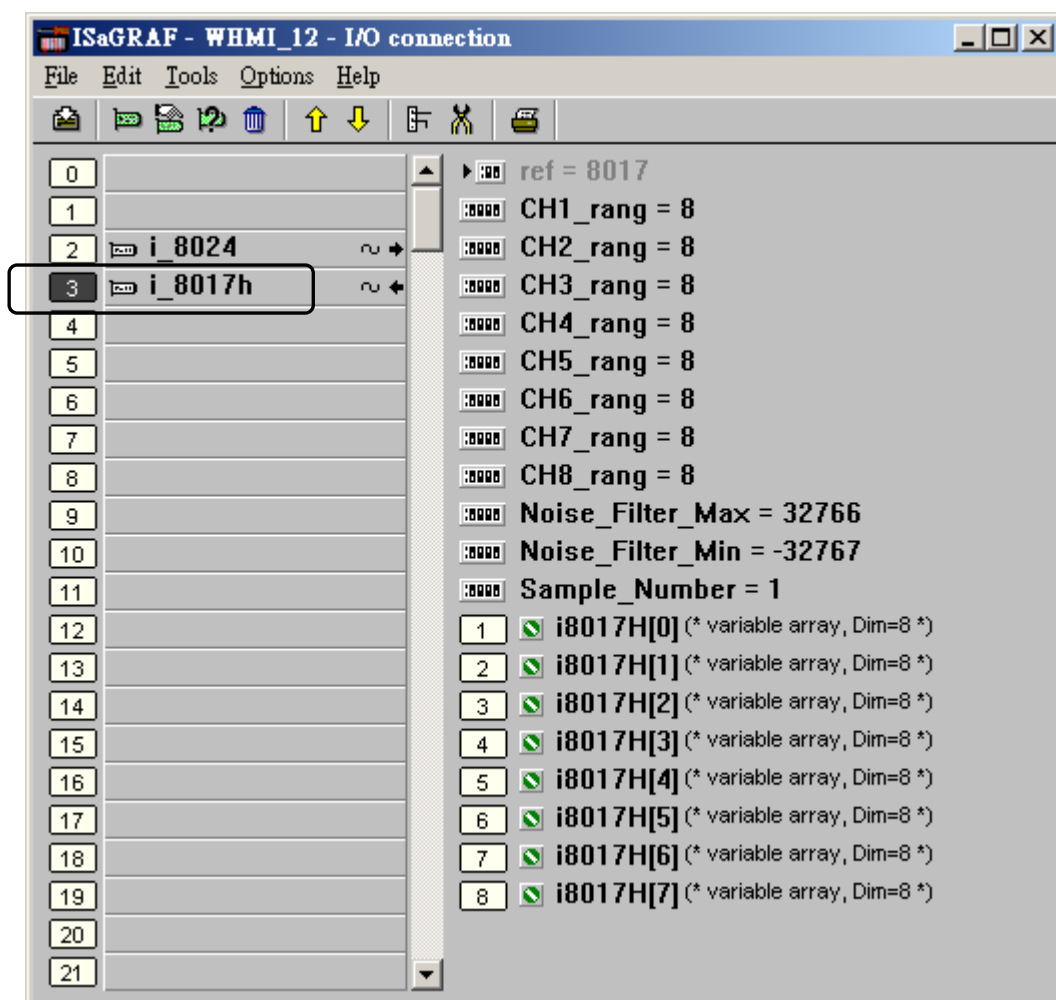
Classification	ISaGRAF English FAQ-057						
Author	Chun Tsai	Version	1.0.0	Date	Oct. 2010	Page	10 / 16

T1	Timer	Internal	For counting time
T1_next	Timer	Internal	The time to get and save next record
T1_interval	Timer	Internal	The interval time between two record
File_name1	Message	Internal	File name, Len is 64, init as \Web_Data1\curve1.js Web HMI support only RAM Disk File in \Web_Data1\ , If the file is in CompactFlash File, Web HMI support only in \CompactFlash\Temp\HTTP\Data\ (Please refer to section 11.2 of ISaGRAF user manual - Whmi_08 demo)
Msg1	Message	Internal	Operation state message, Len is 255, init as "No Action now", addr as 41 (Hex. is 29)
Str1	Message	Intenal	Len is 255, internal use

IO connection:



Classification	ISaGRAF English FAQ-057						
Author	Chun Tsai	Version	1.0.0	Date	Oct. 2010	Page	11 / 16



Classification	ISaGRAF English FAQ-057						
Author	Chun Tsai	Version	1.0.0	Date	Oct. 2010	Page	12 / 16

ST program – Sim_out

```
(* Output I-8024 's Ch1 to Ch4 as different voltage curve *)

(* 2 * Pi * T1 / 60000 = T1 * 1.047197E-4 *)
(* 2 * Pi * T1 / 120000 = T1 * 5.235985E-5 *)

i8024[0] := ANA( sin( REAL(T1) * 1.047197E-4 ) * 3276.8 ) ;
i8024[1] := ANA( cos( REAL(T1) * 5.235985E-5 ) * 3276.8 ) ;
i8024[2] := ANA( sin( REAL(T1) * 1.047197E-4 ) * 6553.6 ) ;
i8024[3] := ANA( cos( REAL(T1) * 5.235985E-5 ) * 6553.6 ) ;
```

ST program – ST1

```
(* W-8xx7 can have max. speed of 100Hz to record data ( minimum sample interval is 10 ms) *)
(* This example assume max. 8-Ch. , so 1 second will record 100 x 8 REAL value *)
(* 1 minute will record 100 x 8 x 60 = 48,000 REAL value *)
(* If period is set as 10 minute, we need 48,000 x 10 = 480,000 REAL value memory =
480,000 x 4 = 1,920,000 bytes *)

if INIT then
  INIT := False ;

  (* Allocate 500,000 integer (or 32-bit REAL) space to store records up to 10 minutes.
  total 500,000 x 4 = 2,000,000 bytes , W-8xx7 support only No.1 Arcreate( ) up to
  3,000,000 integer space, that is 12,000,000 bytes. The first parameter in ARcreate( )
  should be 1, it doesn't support 1st parameter as 0, 2, 3, ... , 15 *)

  (* Arcreate( ) can be called only once in the ISaGRAF program *)

  TMP_v := ARcreate(1, 500000) ;
  if TMP_v <> 1 then
    Msg1 := 'Parameter error or can not allocate memory by ARcreate( ) function!' ;
  end_if ;

  TMP := PLC_mode(-1) ;      (* Set W-8xx7 ISaGRAF driver running at fastest mode *)
end_if ;
```

Classification	ISaGRAF English FAQ-057					
Author	Chun Tsai	Version	1.0.0	Date	Oct. 2010	Page 13 / 16

(* If stop command is gived *)

if Stop1 then

Stop1 := False ;

STEP1 := 0 ; (* 0: no action *)

TStop(T1) ; (* stop T1 *)

T1 := T#0s ;

Msg1 := 'User stop recording !' ;

save_cnt1 := 0 ;

end_if ;

(* If start command is gived *)

if Go1 then

Go1 := False ;

(* STEP1 : 0: no action, 1: recording, 2: record finished *)

if STEP1=1 then

(* It is still recording now *)

Msg1 := 'It is still recording now ... Please wait' ;

else

(* Check interval valid or not *)

(* we assume 10 to 10000 ms is valid in this example *)

(* If your average PLC scan time is larger, for example, near 10 ms,
Please use Interval larger than 10 ms. Or the record time won't be correct *)

if (Interval1 < 10) or (Interval1 > 10000) then

Msg1 := 'Wrong Interval value, it should be in 10 to 10000 milli-second !' ;

(* Check period valid or not *)

(* we assume 1 to 10 minute is valid in this example *)

elsif (Period1 < 1) or (Period1 > 10) then

Msg1 := 'Wrong Period value, it should be in 1 to 10 minute !' ;

else

Classification	ISaGRAF English FAQ-057						
Author	Chun Tsai	Version	1.0.0	Date	Oct. 2010	Page	14 / 16

```

(* parameter is correct, start recording *)

total_record1 := (Period1 * 60000) / Interval1 ;  (* calculate total record number *)
record_cnt1 := 0 ;  (* reset current record count as 0 *)
STEP1 := 1 ;      (* set step as 1:recording *)
Msg1 := 'Recording now ... Please wait' ;

(* start ticking T1 from 0 second *)
T1 := T#0s ;
T1_Interval := TMR(Interval1) ;
T1_next := T1 + T1_Interval ;
TStart(T1) ;  (* ticking now *)
save_cnt1 := 0 ;
end_if ;
end_if ;
end_if ;

(* in reconrding state *)
if STEP1 = 1 then

  (* store one record *)
  if T1 >= T1_next then

    (* Re-calculate next T1 *)
    T1_next := T1_next + T1_Interval ;

    (* T1 will be overflow after T#23h59m59s999ms, so reset it at T#20h *)
    if T1 >= T#20h then
      T1 := T#0s ;
      T1_next := T1 + T1_Interval ;
    end_if ;

    (* record data *)
    for ii := 0 to NUM_CH-1 do
      Volt1[ii] := Real(i8017H[ii]) * 0.000305176 ;  (* convert to voltage *)
    end_for ;
  end_if ;
end_if ;

```

Classification	ISaGRAF English FAQ-057						
Author	Chun Tsai	Version	1.0.0	Date	Oct. 2010	Page	15 / 16

(* using Real_int() to map REAL value to become integer value & then store it by ARwrite() *)

TMP_v := ARwrite(1 , NUM_CH * record_cnt1 + ii , Real_int(Volt1[ii]));

(* check if ARwrite() correct *)

if TMP_v <> 1 then

Msg1 := 'Can not operate ARwrite() !' ;

STEP1 := 0 ; (* 0: no action *)

TStop(T1) ; (* stop T1 *)

T1 := T#0s ;

end_if ;

end_for ;

(* Check if record number reach the end *)

record_cnt1 := record_cnt1+1 ; (* current record count plus 1 *)

if (record_cnt1 >= total_record1) then

(* record is finished, prepare to save records to a RAM disk file in serval separate PLC scans *)

STEP1 := 0 ; (* set step as 0 at the beginning of saving *)

Tstop(T1) ;

T1 := T#0s ;

(* Create a new file *)

File1 := F_creat(File_name1) ;

if File1 = 0 then

(* Can not create file *)

Msg1 := 'Create File ' + 'File_nam1 Error !!!' ;

else

(* Because saving lots of data to file take lots of PLC scan time , we are not going to save all data in a single PLC scan. We will save it in serval separate PLC scans *)

Msg1 := ' Please wait ... Saving data to file : ' + File_name1 + ' ...' ;

save_file1 := True ; (* set as True to start saving RAM disk file *)

save_cnt1 := 0 ; (* from 0 to total_record1-1 *)

end_if ;

end_if ;

end_if ;

end_if ;

Classification	ISaGRAF English FAQ-057						
Author	Chun Tsai	Version	1.0.0	Date	Oct. 2010	Page	16 / 16

(* Because saving lots of data to file take lots of PLC scan time , we are not going to save all data in a single PLC scan. We will save it in serval separate PLC scans *)

(* save records to a RAM disk file in serval separate PLC scans *)

```

if save_file1 then
  for ii2 := 0 to 50 do      (* we limit one PLC scan can save max. 50 records *)
    if save_cnt1 < total_record1 then
      str1 := "" ;      (* init str1 as empty string *)
      for ii := 0 to NUM_CH - 1 do
        (* delimiter is <TAB> character *)
        str1 := str1 + Rea_Str2( Int_real(ARread(1, NUM_CH * save_cnt1 + ii)) , 3 ) + '$09' ;
      end_for ;
      str1 := str1 + '$0D$0A' ; (* add <CR> <LF> at the end of each row *)
      TMP := F_writ_s(File1 , str1) ;
      save_cnt1 := save_cnt1 + 1 ;
    else
      (* saving is finished *)
      save_file1 := False ;
      TMP := F_close(File1) ;      (* Close file *)
      STEP1 := 2 ;      (* 2: recond finished *)
      Msg1 := 'Record is finished ! You may download the record file to your PC now !' ;
    end_if ;
  end_for ;
end_if ;

```

Click the link for more ISaGRAF FAQ:

<http://www.icpdas.com/en/faq/index.php?kind=280#751>