

Classification	ISaGRAF English FAQ-052						
Author	Chun Tsai	Version	1.0.0	Date	Nov. 2006	Page	1 / 2

VB 6.0 Demo program using Modbus TCP/IP protocol to control ISaGRAF PACs?

[Download FAQ-052 Demo.](#)

Below ICP DAS ISaGRAF PACs support Modbus TCP/IP slave protocol. Visit the ISaGRAF website for more information of new products.

https://www.icpdas.com/en/product/guide+Software+Development__Tools+ISaGRAF#442

I-7188EG, I-8437-80 / I-8837-80 / I-8437 / 8837, uPAC-7186EG, and so on.

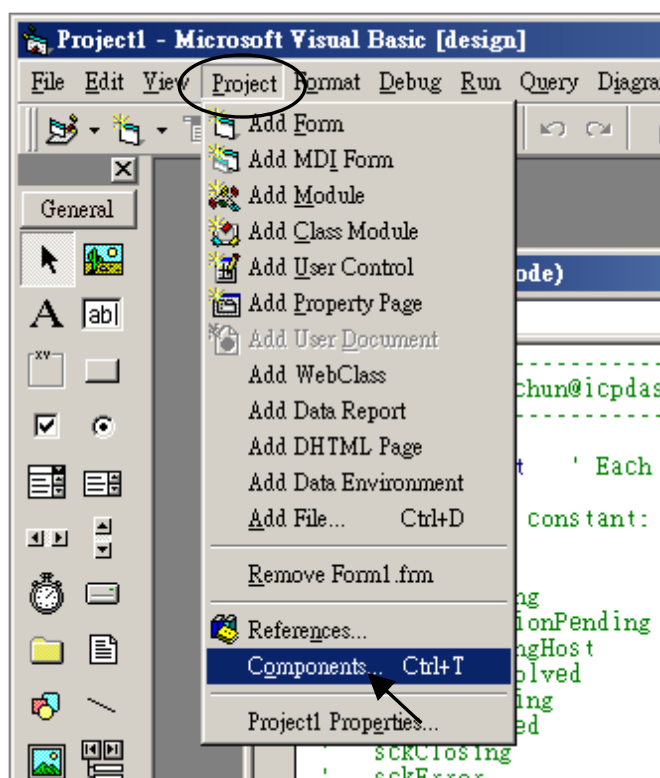
(These PAC have been phased out.)

WinCon-8037 / 8337 / 8737 / 8036 / 8336 / 8736

WinCon-8047 / 8347 / 8747 / 8046 / 8346 / 8746

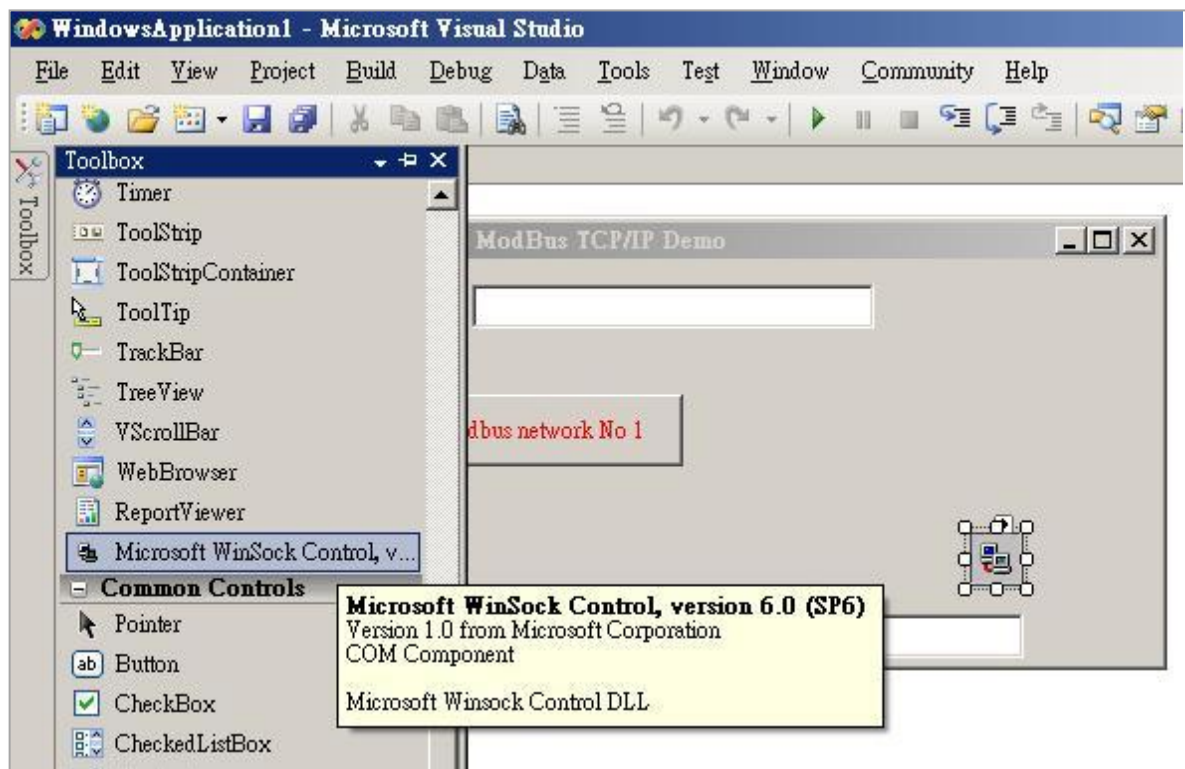
PC can run this "Demo_3" VB 6.0 demo program to access to the above ICP DAS PACs .

1. Please set a proper IP to your PAC and make sure your PC's IP is in the same IP domain as the PAC.
2. Please download "wdemo_48" ISaGRAF project to your ISaGRAF PAC.
(The "wdemo_48" ISaGRAF program and "Demo_3" VB 6.0 demo program can be download at <http://www.icpdas.com/en/faq/index.php?kind=280#751> - FAQ052)
3. Please run "Project" - "Components" to check the "Microsoft Winsock Control, ..." to insert the Winsock control.



Classification	ISaGRAF English FAQ-052						
Author	Chun Tsai	Version	1.0.0	Date	Nov. 2006	Page	2 / 2

4. Then add one Winsock control to your VB 6.0's form1.



5. Modify the IP to your PAC's IP in "form1" program, For example:

AxWinsock1.RemoteHost = "10.0.0.103"

6. Re-built this VB 6.0 demo project & run it.

Click the link for more ISaGRAF FAQ:

<http://www.icpdas.com/en/faq/index.php?kind=280#751>