

Classification	ISaGRAF English FAQ-051						
Author	Chun Tsai	Version	1.0.0	Date	Oct. 2006	Page	1 / 2

## VB.net 2005 Demo program using Modbus TCP/IP protocol to control ISaGRAF PACs?

[Download FAQ-051 Demo.](#)

Below ICP DAS ISaGRAF PACs support Modbus TCP/IP slave protocol. Visit the ISaGRAF website for more information of new products.

[https://www.icpdas.com/en/product/guide+Software+Development\\_\\_Tools+ISaGRAF#442](https://www.icpdas.com/en/product/guide+Software+Development__Tools+ISaGRAF#442)

I-7188EG, I-8437-80 / I-8837-80 / I-8437 / 8837, uPAC-7186EG, and so on.

(These PAC have been phased out.)

WinCon-8037 / 8337 / 8737 / 8036 / 8336 / 8736

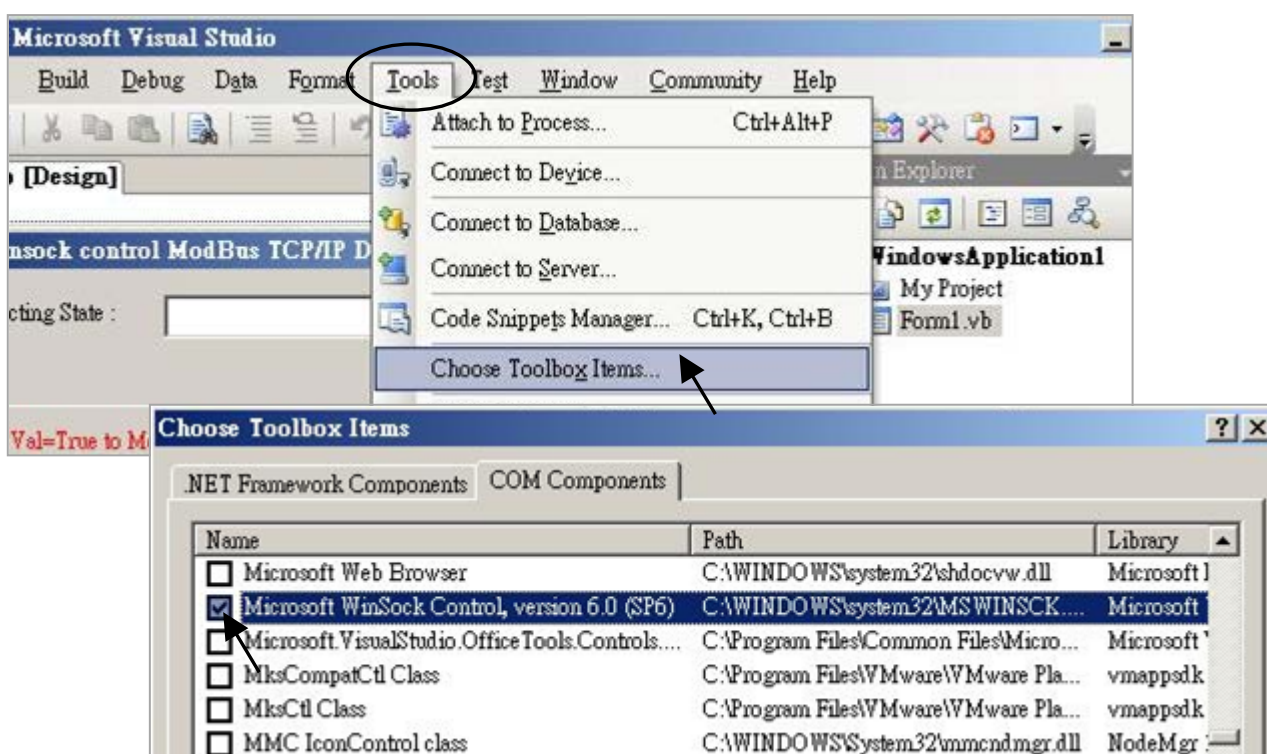
WinCon-8047 / 8347 / 8747 / 8046 / 8346 / 8746

PC with VS.net 2005 frame work installed can run this “MBTCP\_demo” VB.net 2005 demo program to access to the above ICP DAS PACs .

1. Please set a proper IP to your PAC and make sure your PC's IP is in the same IP domain as the PAC.
2. Please download “Wdemo\_48” ISaGRAF project to your ISaGRAF PAC.

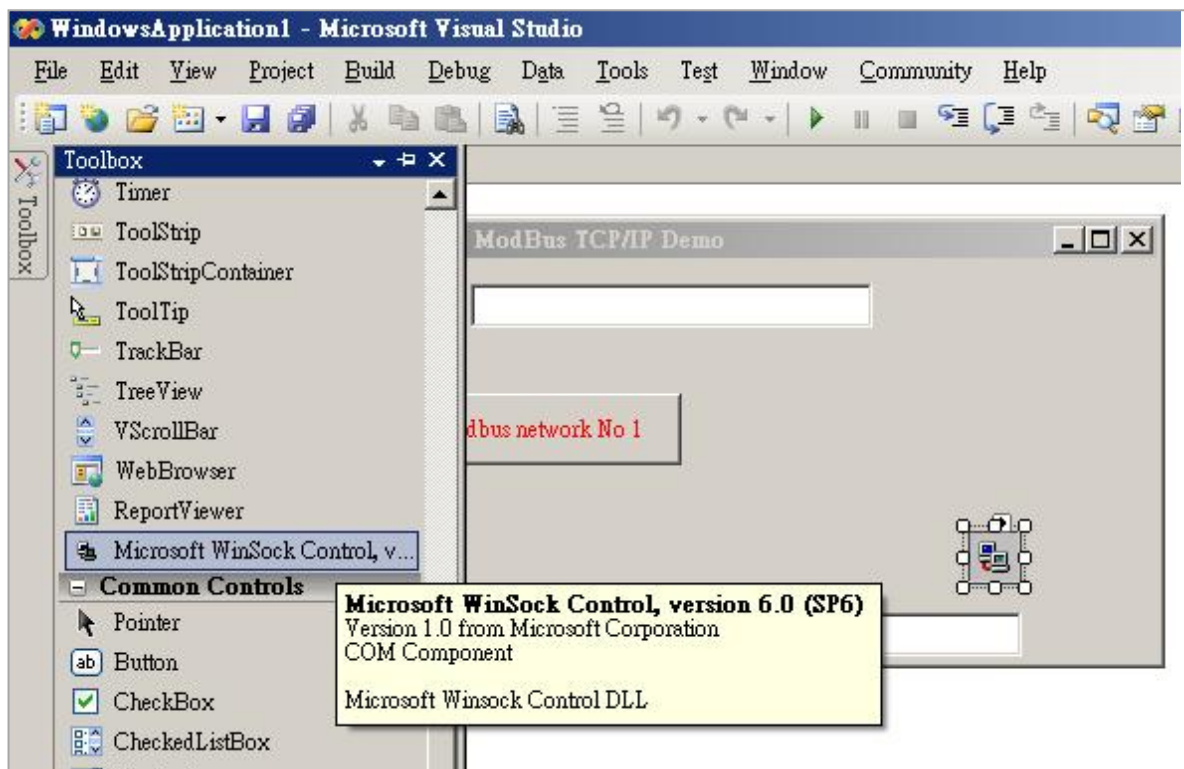
(The “Wdemo\_48” ISaGRAF program and “MBTCP\_demo” VB.net 2005 demo program can be download at <http://www.icpdas.com/en/faq/index.php?kind=280#751> - FAQ051)

3. Please run “Tools” - “Choose Toolbox Items” to check the “Microsoft Winsock Control, ...” to insert the Winsock control.



Classification	ISaGRAF English FAQ-051						
Author	Chun Tsai	Version	1.0.0	Date	Oct. 2006	Page	2 / 2

4. Then add one Winsock control to your VB.net 2005 's form1.



5. Modify the IP to your PAC's IP in "form1" program, For example:

`AxWinsock1.RemoteHost = "10.0.0.103"`

6. Re-built this VB.net 2005 demo project & run it.

Click the link for more ISaGRAF FAQ:

<http://www.icpdas.com/en/faq/index.php?kind=280#751>