

Classification	ISaGRAF English FAQ-047						
Author	Chun Tsai	Version	1.0.0	Date	Sep. 2006	Page	1 / 2

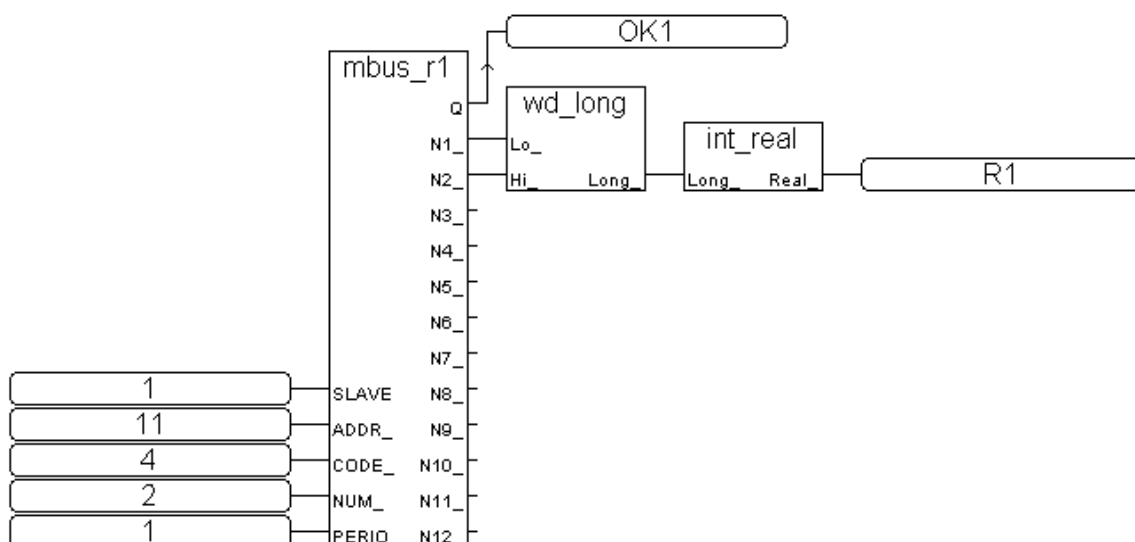
How to Read or Write Floating Point Value to Modbus RTU Slave device ?

[Download FAQ-047 Demo.](#)

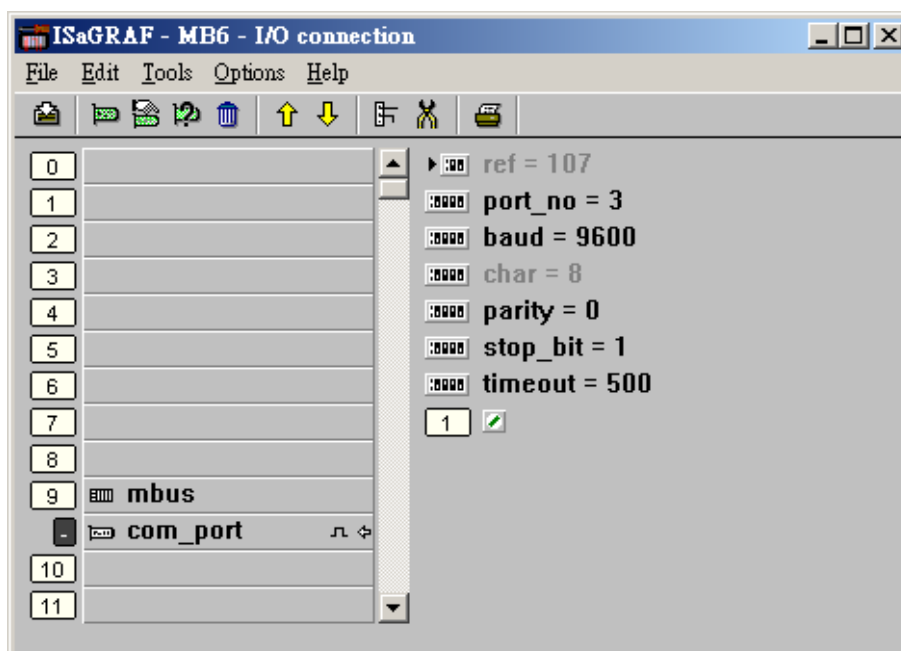
Visit [FAQ-027](#) and [FAQ-028](#) for more information about **Modbus RTU Master** functions.

1. Read floating point value (Real value), R1 is declared as internal Real. OK1 is internal Boolean.

Request 1 Real Val (2 words) every 1 second by using "Mbus_r1" from Modbus RTU slave device of NET-ID =1, Modbus addr starting from 11, using Modbus call 4



I/O connection: Please remember to connect "mbus" in the ISaGRAF I/O connection windows (or if your device support Modbus ASCII, please use "mbus_asc").

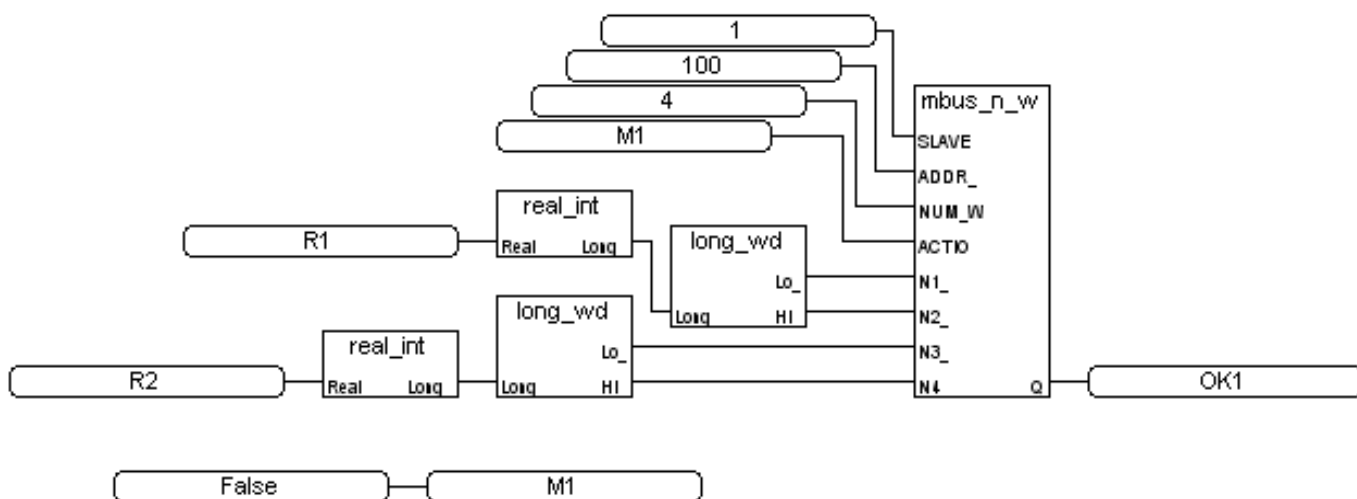


Classification	ISaGRAF English FAQ-047						
Author	Chun Tsai	Version	1.0.0	Date	Sep. 2006	Page	2 / 2

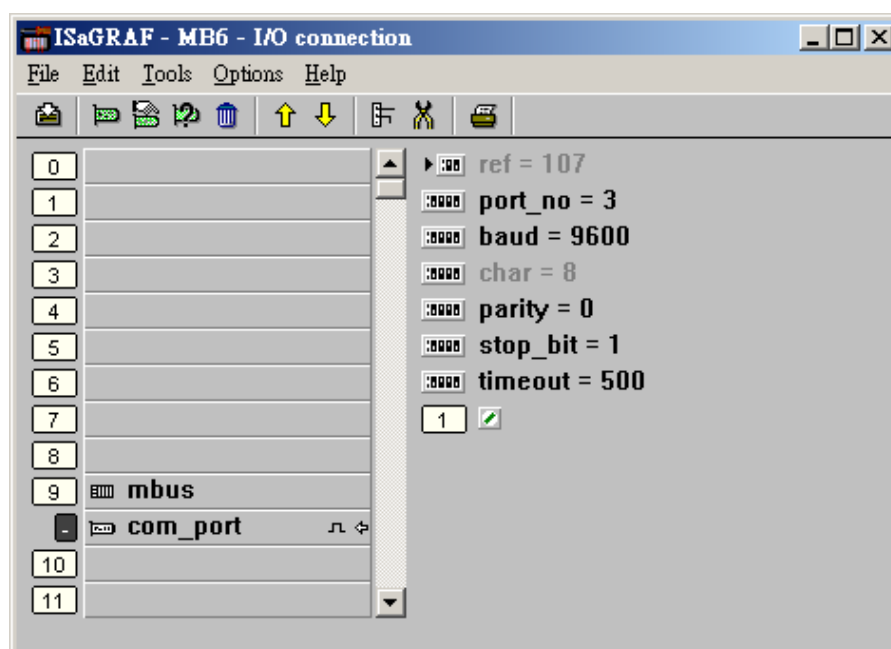
2. Write floating point value (Real value)

R1 & R2 are declared as internal Real, M1 & OK1 are internal Boolean.

Write 2 Real Value (4 words) to Modbus RTU device of Net-ID=1, Modbus address starting from 100, write once when M1 is set to True. "Mbus_n_w" using Modbus function call 16 to write 2 to 4 words. While function call 6 to write 1 word.



I/O connection: Please remember to connect "mbus" in the ISaGRAF I/O connection windows (or if your device support Modbus ASCII, please use "mbus_asc").



Click the link for more [ISaGRAF FAQ](#)