

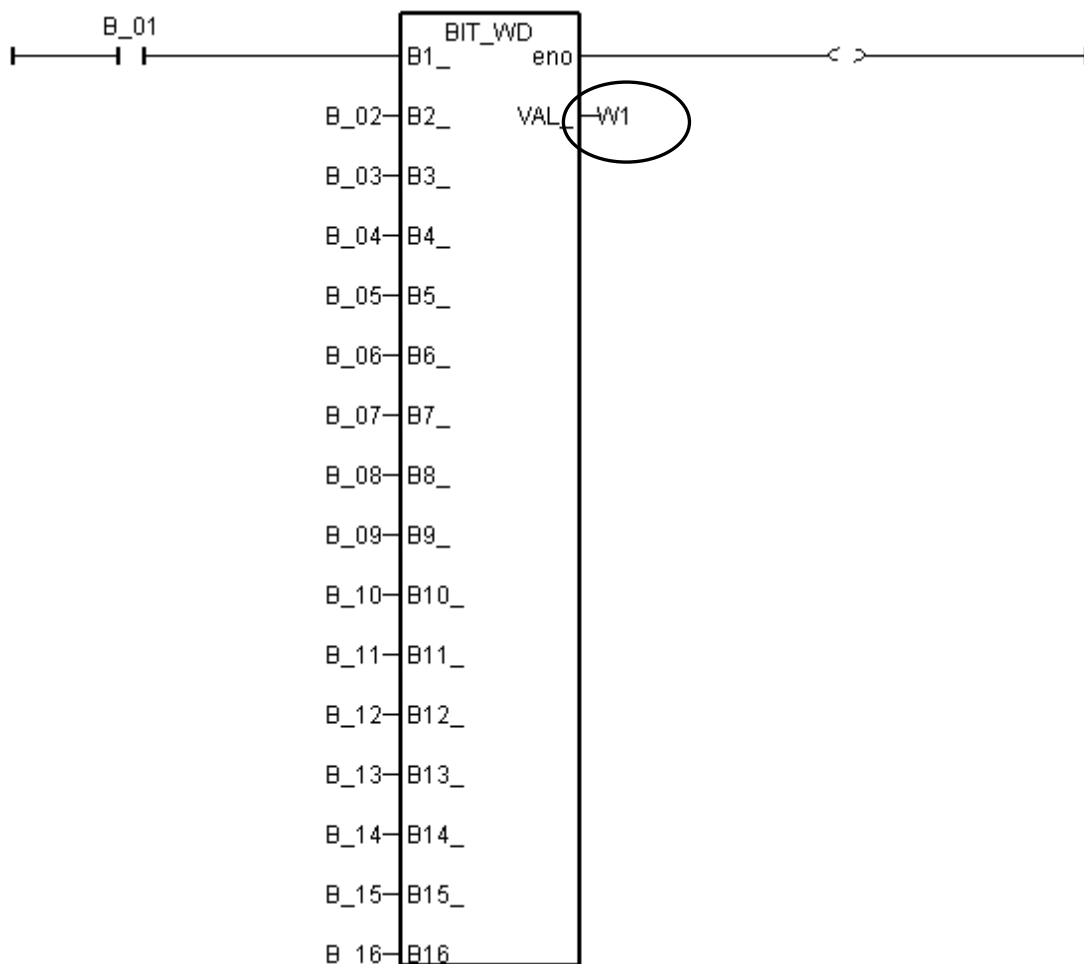
Classification	ISaGRAF English FAQ-046						
Author	Chun Tsai	Version	1.0.0	Date	Sep. 2006	Page	1 / 2

How to Write 16-bits to Modbus RTU devices by Mobus function call No. 6?

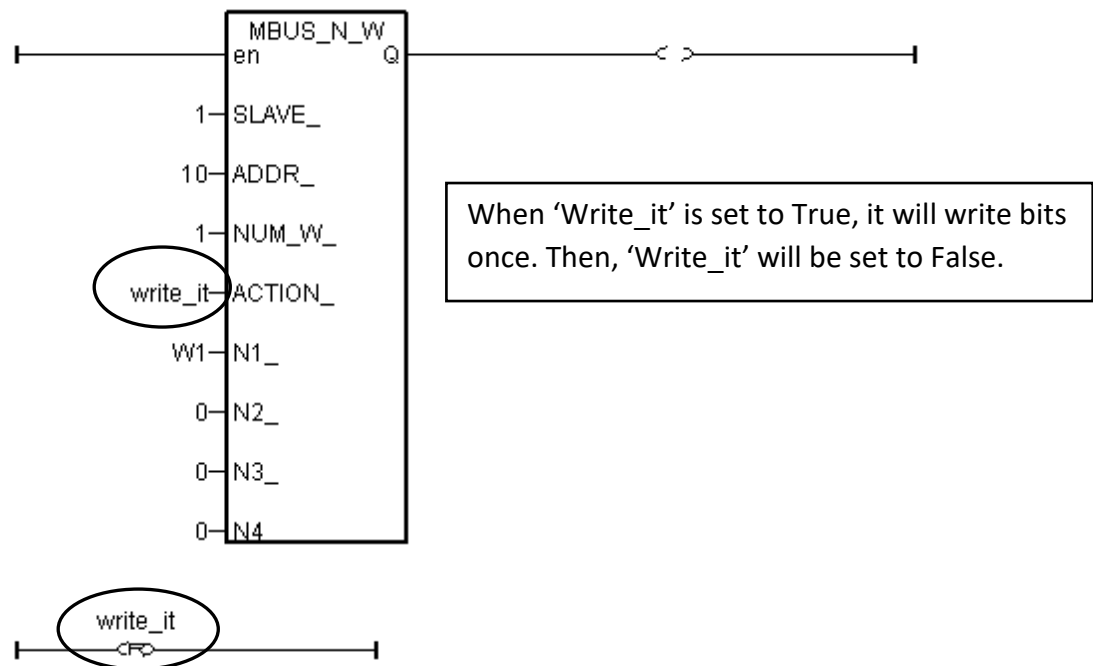
[Download FAQ-046 Demo.](#)

The standard Modbus function definition for writing bits is function call 5 & function call 15. Function call 5 write one bit only, while function call 15 write many bits.

If there is special device which supports writing bits command by function call 6, user may use the below program to do it. (**W1** is internal Integer, **B_01** to **B_16** & **Write_it** is internal Boolean)

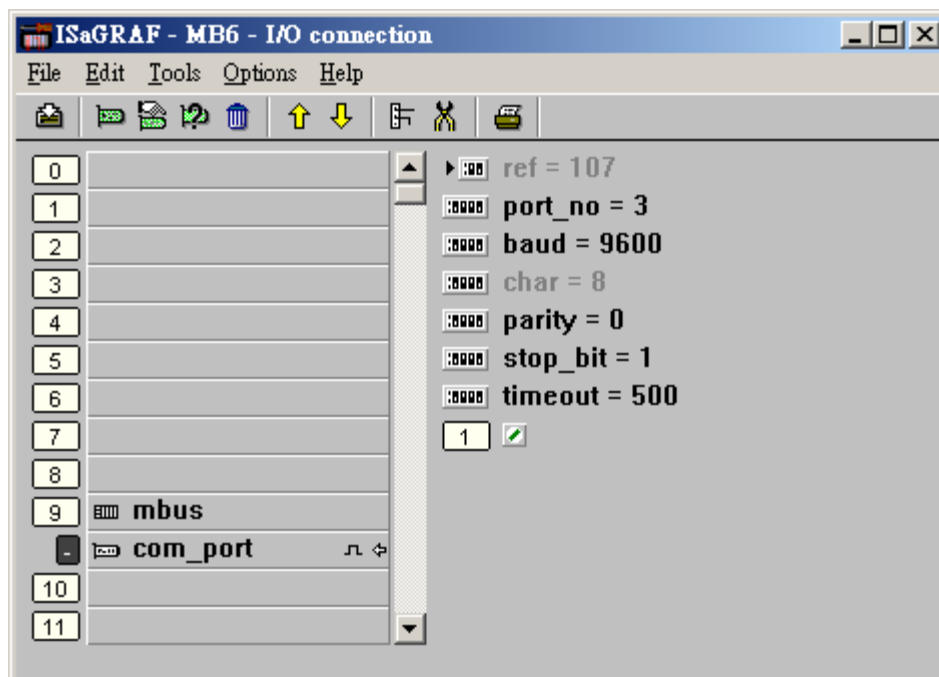


Classification	ISaGRAF English FAQ-046						
Author	Chun Tsai	Version	1.0.0	Date	Sep. 2006	Page	2 / 2



And remember to connect “mbus” in the ISaGRAF I/O connection windows (or if your device support Modbus ASCII, please use “mbus_asc”). Please set proper port_no , baud, parity, stop_bit & timeout.

Also visit [FAQ-027](#) and [FAQ-028](#) for more information about Modbus RTU Master functions.



Click the link for more ISaGRAF FAQ:

<http://www.icpdas.com/en/faq/index.php?kind=280#751>