

Classification	ISaGRAF English FAQ-037						
Author	Chun Tsai	Version	1.0.0	Date	Aug. 2007	Page	1 / 1

I-7188EG/XG support remotely downloads via Modem Link

ANS:

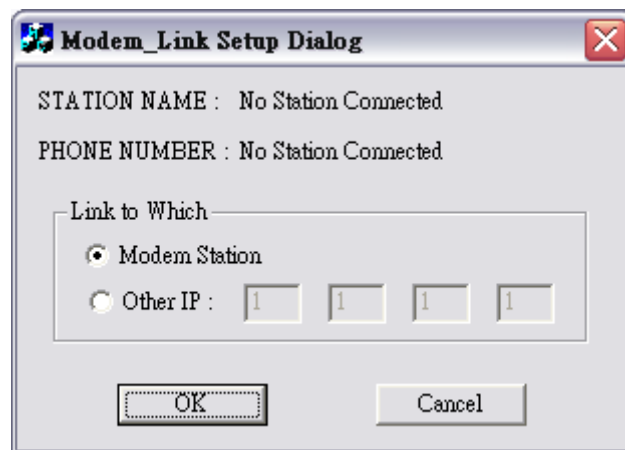
I-7188EG/XG has to install the X504 because only COM4 of X504 supports full modem signals.

It has embedded the Modem Link protocol for remotely download and monitoring since the I-7188EG driver version of 2.10 & I-7188XG driver version of 2.08.

Please visit the ISaGRAF Download Center to get the latest version of PAC driver.

<https://www.icpdas.com/en/download/index.php?nation=US&kind1=&model=&kw=isagraf>

Only the "Modem station" can connect to I-7188EG/XG.



Connect a RS232 cable between I-7188EG/XG's COM4 to Modem

I-7188EG/XG (Com4 of X504)		Modem (9-pin Dsub)
DCD 4	_____	1 DCD
RXT 4	_____	2 RXD
TXD 4	_____	3 TXD
DTR 4	_____	4 DTR
GND 4	_____	5 GND
DSR 4	_____	6 DSR
RTS 4	_____	7 RTS
CTS 4	_____	8 CTS
RI 4	_____	9 RI

More detail information refer to section 13 of the ISaGRAF user manual.

Click the link for more ISaGRAF FAQ:

<http://www.icpdas.com/en/faq/index.php?kind=280#751>