

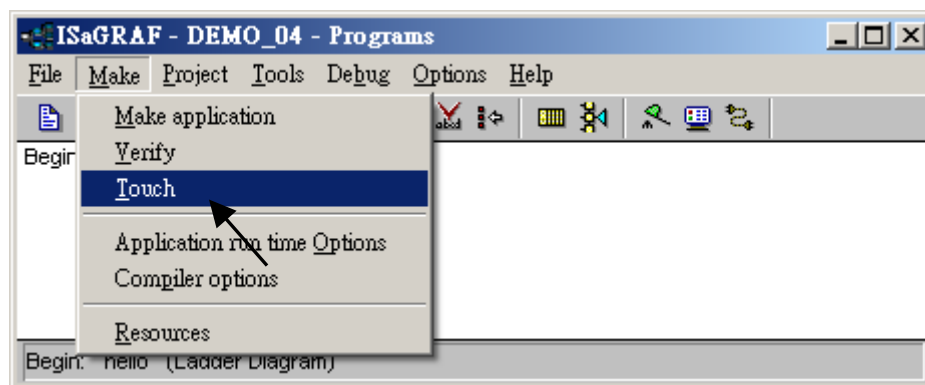
Classification	ISaGRAF English FAQ-034						
Author	Chun Tsai	Version	1.0.0	Date	Apr. 2006	Page	1 / 1

Compiling error result in different ISaGRAF version?

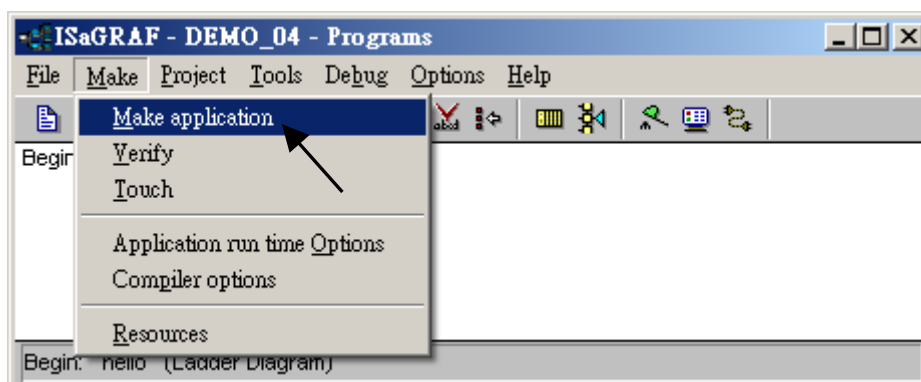
[Download FAQ-034 Demo.](#)

In the recent four years since 2003, all the ISaGRAF example programs provided on the ISaGRAF FAQ webpage are written in ISaGRAF workbench version of 3.46. If your ISaGRAF workbench is version of 3.51 or later version, it may generate error when you re-compile these example programs.

To erase this kind of error in different ISaGRAF workbench version, please run “Make” – “Touch” once. And then re-compile this example project.



The “Make” – “Touch” command will reset all files that have been successfully compiled to become “Not compiled yet”. Then the next “Make” – “Make application” command will re-compile all of them.



Click the link for more ISaGRAF FAQ:

<http://www.icpdas.com/en/faq/index.php?kind=280#751>