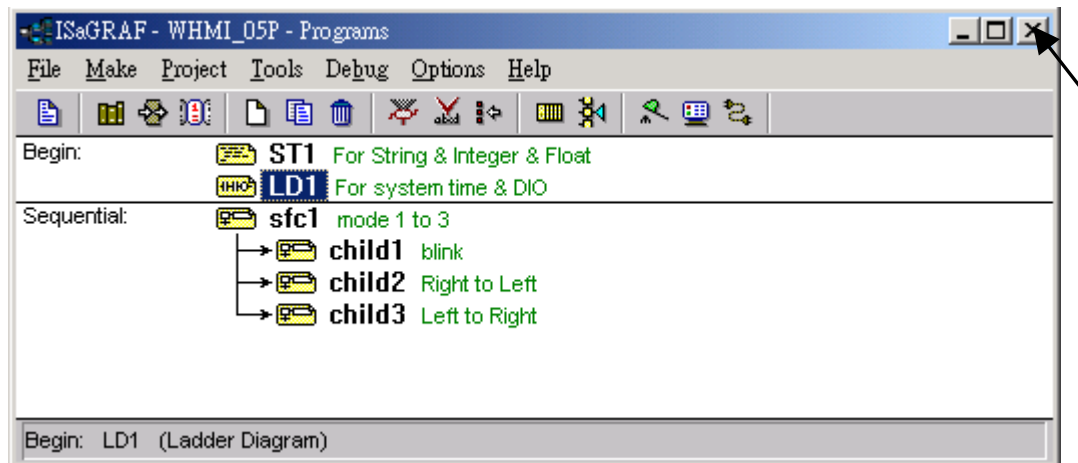


Classification	ISaGRAF English FAQ-021						
Author	Chun Tsai	Version	1.0.0	Date	Aug. 2007	Page	1 / 2

When closing my ISaGRAF window, it holds for long time. Why?

Please This problem usually happens on the window 2000. When you close some ISaGRAF windows by clicking on the "X", it holds about 20 to 40 seconds (No response).



This "hold" behavior is caused by the "CTFMON.EXE" process. We still don't know the reason yet. You may stop this process by click on the "Ctrl" & "Alt" & "Del" at the same time to open the window Task Manager, and then stop it.

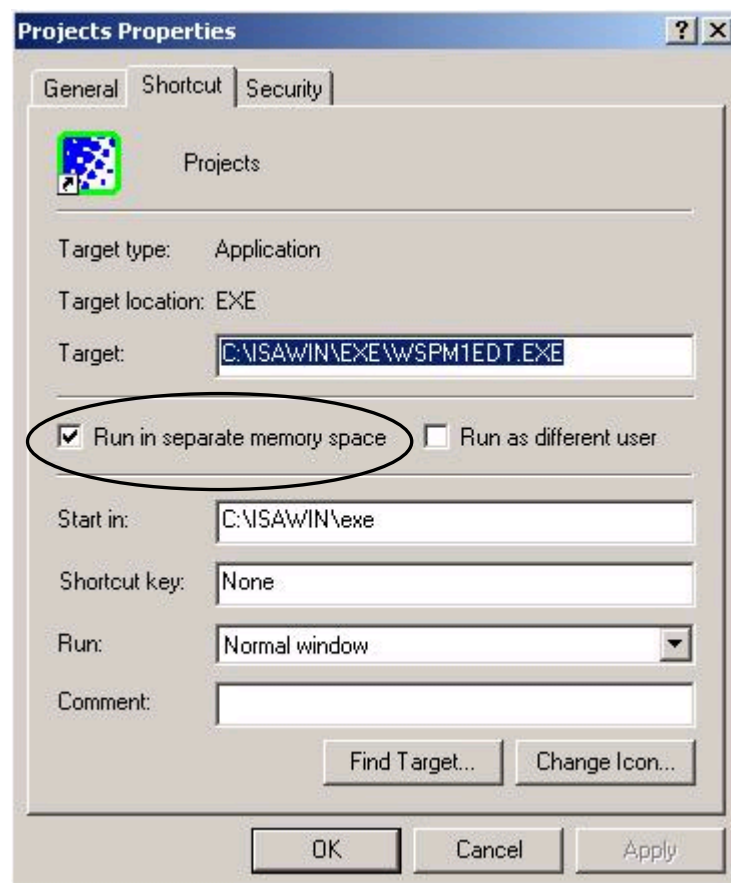


Classification	ISaGRAF English FAQ-021						
Author	Chun Tsai	Version	1.0.0	Date	Aug. 2007	Page	2 / 2

However you will find the “CTFMON.EXE” still load to run when you reboot your PC. So you need to stop it every time when your windows 2000 is rebooted. If you want to know more about the “CTFMON.EXE”, please visit www.microsoft.com & search “CTFMON.EXE”.

One Quick Way To Avoid “hold” problem on windows 2000.

You may create a short cut for the “ISaGRAF project manager. And then check on "run in separate memory space" option in the shortcut property.



Click the link for more ISaGRAF FAQ:

<http://www.icpdas.com/en/faq/index.php?kind=280#751>