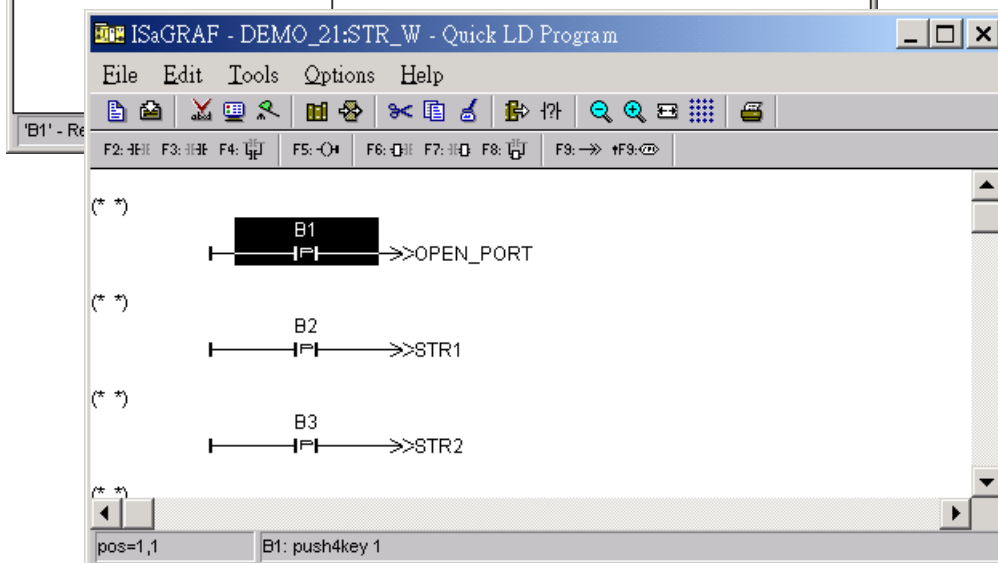
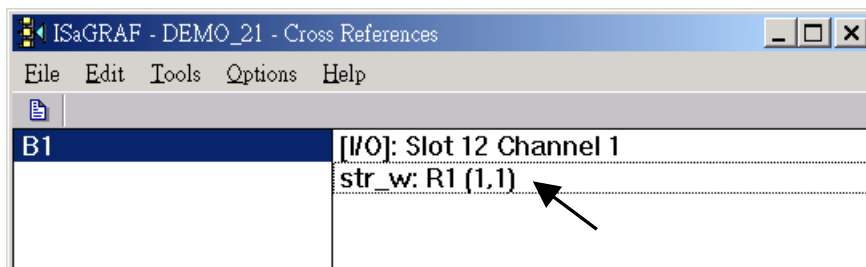
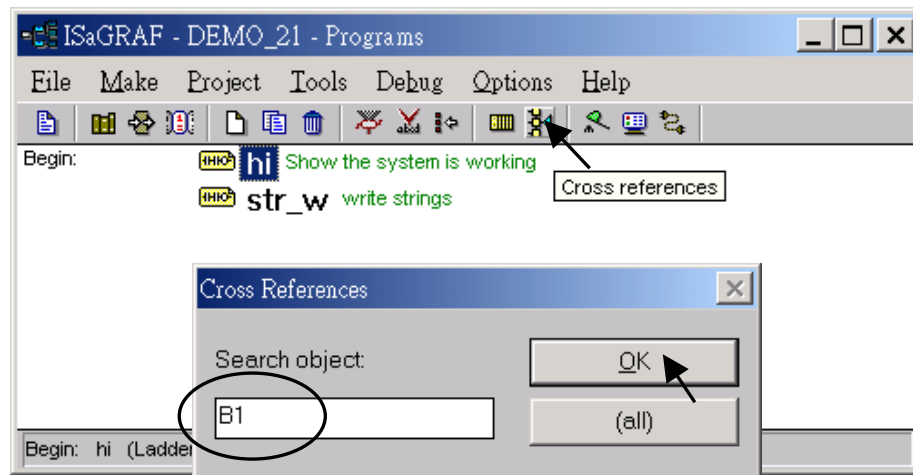


Classification	ISaGRAF English FAQ-020						
Author	Chun Tsai	Version	1.0.0	Date	Aug. 2007	Page	1 / 1

How to search a variable name in an ISaGRAF project?

Please click on “**Cross references**” and then entering the name you would like to search. The location will appear on the right hand side. Just click on it to get into it.



Click the link for more ISaGRAF FAQ:

<http://www.icpdas.com/en/faq/index.php?kind=280#751>