

Classification	ISaGRAF English FAQ-010						
Author	Chun Tsai	Version	1.0.0	Date	Aug. 2007	Page	1 / 2

I want to email my ISaGRAF program to someone. How can I archive one ISaGRAF project to a single file?

Click the link for more [ISaGRAF FAQ](#).

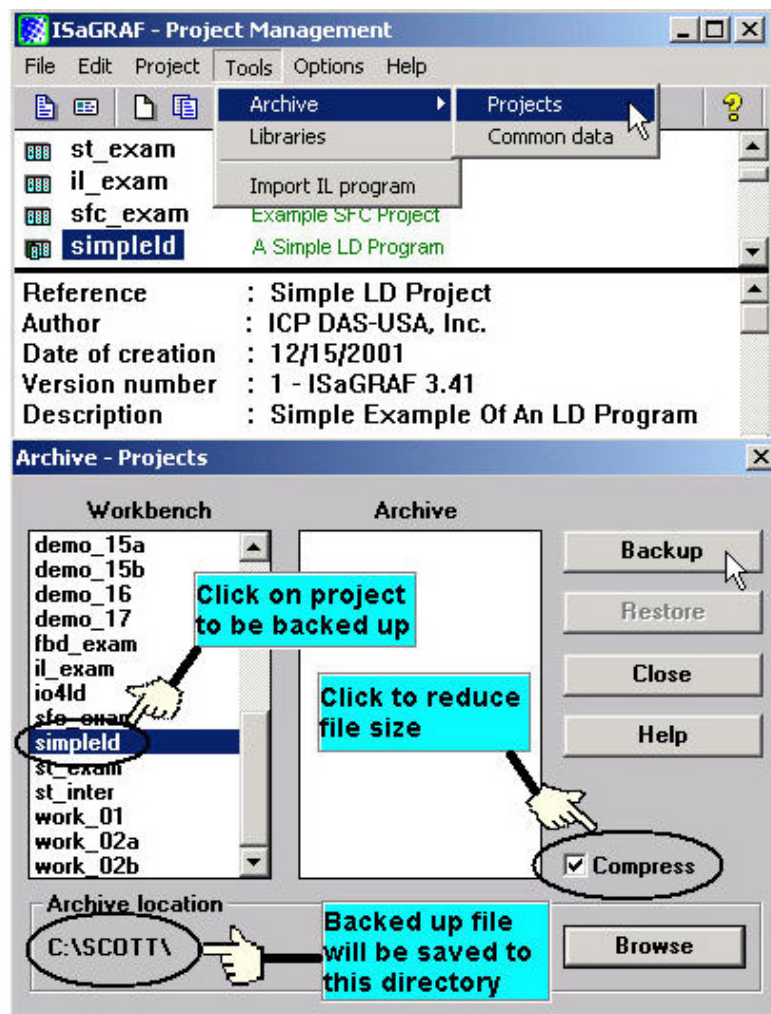
Ans:

For archiving purposes you can "Back Up" and "Restore" an ISaGRAF Workbench project.

Backing Up An ISaGRAF Project:

Open the "ISaGRAF Project Management" window, select "Tools" from the menu bar, click on "Archive", and then click on "Projects". An "Archive Projects" window will open which allows you to designate where you want to save the ISaGRAF project to.

Click on the name of the ISaGRAF project you want to backup, and then click on the "Backup" button. You can compress the size of the file you have backed up by clicking on the "Compress" checkbox BEFORE you click on the "Backup" button.



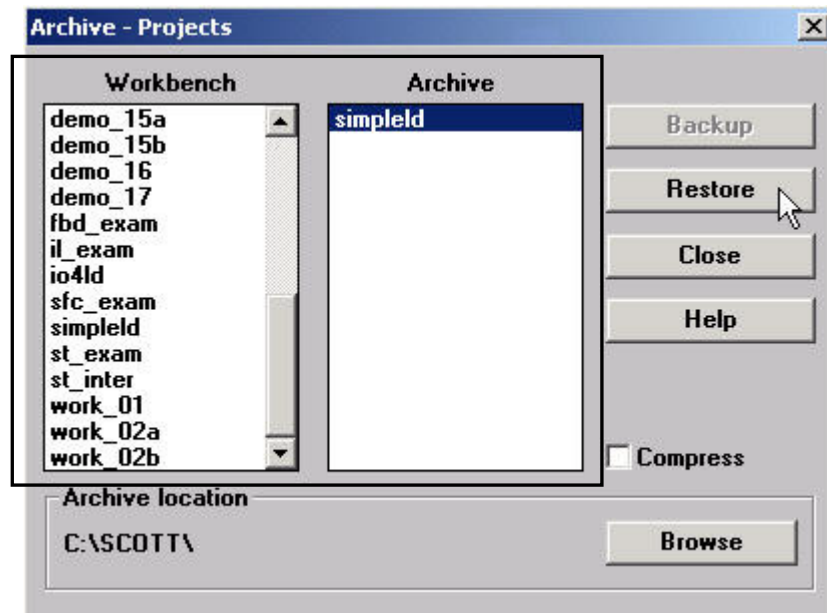
You will now find the backed up ISaGRAF project file in the "Archive" location you have designated. In the example above, the name of the backed up file is "simpleld.pia".

Classification	ISaGRAF English FAQ-010						
Author	Chun Tsai	Version	1.0.0	Date	Aug. 2007	Page	2 / 2

Restoring An ISaGRAF Project:

To restore an ISaGRAF project from a backed up file, use the same method as above to access to the "Archive Projects" window.

Then click on the name of the project you want to restore from the "Workbench" window, then click on the name of the backed up file from the "Archive" window, then click on the "Restore" button. The ISaGRAF project will now be restored to the sub-directory you designated.



You can now open, edit and download the restored ISaGRAF project file.

Click the link for more ISaGRAF FAQ:

<http://www.icpdas.com/en/faq/index.php?kind=280#751>