

Classification	ISaGRAF English FAQ-007						
Author	Chun Tsai	Version	1.0.0	Date	Aug. 2007	Page	1 / 5

Can I write my own protocol or third-party protocol to apply on ISaGRAF PACs?

Ans: Yes. COM3/COM4 of I-8xx7, & COM 2 of I-7188EG/XG can do that (refer to table in FAQ-006).
 Additionally, If you have purchased extra serial port modules (I-8112/8114/8142/8144), I-8xx7 can use up to COM20, while I-7188EG/XG can use up to COM8 (X503 to X514).
 Please use functions with name of COMxxxx to access to these COM port. For example, OMOPEN or COMREADY.

ICP DAS ISaGRAF PACs support below Serial COM Port (RS-232/422/485) protocols:

Modbus RTU Slave	Refer to Chapter 4 of the ISaGRAF user manual & respective getting started manual
I-7000 and I-87xxx RS-485 I/O	Refer to Chapter 6 of the ISaGRAF user manual
Modbus RTU Master (M-7000)	Refer to Chapter 8 and 21 of the ISaGRAF user manual
Modbus ASCII Master	Refer to Chapter 8 of the ISaGRAF user manual
Modem Link	Refer to Chapter 13 of the ISaGRAF user manual
MMICON	Refer to Chapter 16 of the ISaGRAF user manual
SMS : Short Message Service	Refer to Chapter 17 of the ISaGRAF user manual

User can apply below COM functions to operate other protocols or 3rd party protocols.
 (Please refer to Appendix A.4 of the ISaGRAF user's manual for description of these COM functions)

COMOPEN	Open Serial COM Port (without "Flow control" parameter)
COMOPEN2	Open Serial COM Port (with "Flow control" parameter, not for I-8xx7)
COMREADY	Test if any byte come in
COMARY_R	Read all bytes which already come in to a byte array
COMARY_W	Write many bytes in a byte array to COM Port
COMREAD	Read one bytes (Please call "COMREADY" to test first, if there is data, then "COMREAD" can be called)
COMCLEAR	Clear all received bytes in the receiving buffer
COMARY_NW	Write one signed long Integer to COM Port, format is Binary, 4-byte
COMARY_WW	Write one signed Word to COM Port, format is Binary, 2-byte
COMSTR_W	Write one string to COM Port
COMWRITE	Write one byte to COM Port
COMCLOSE	Close Serial COM Port

Visit to the ISaGRAF Download Center:

<http://www.icpdas.com/en/download/index.php?nation=US&kind1=&model=&kw=isagrap>

Classification	ISaGRAF English FAQ-007						
Author	Chun Tsai	Version	1.0.0	Date	Aug. 2007	Page	2 / 5

Note:

1. The default shipping of I-8xx7 PAC has set its COM1 and COM2 (COM2: RS-485 is only for I-8417/8817) as Modbus RTU Slave Port. User can choose to switch off the COM1: Modbus RTU Slave function to become a freely used COM port by the above listed COM functions. (Please refer to Appendix C.1).

To use i-8xx7 's COM5 to COM20, refer to Chapter 1.8 to install I-8112/8114/8142/ 8144 serial expansion boards.

2. WinCon-8xx7 / 8xx6 's COM2 / COM3 can be switched ON as a Modbus RTU Slave Port. Or Switch Off for freely used. (Refer to Appendix A.2 of its Getting Started manual delivered with the hardware).

To use WinCon's COM5 to COM14 at I-8112/8114/8142/8144 serial expansion boards, please refer to Appendix E of the "Getting Started: WinCon ISaGRAF PAC" manual.

3. COM1 of I-7188EG / 7186EG is set as Modbus RTU Slave port when shipping. User may switch it OFF to freely use it by COM port functions. (Please refer to its "Getting Started Manual" delivered with its hardware). However I-7188XG 's COM1 can not be switch OFF, it is always Modbus RTU Slave port.

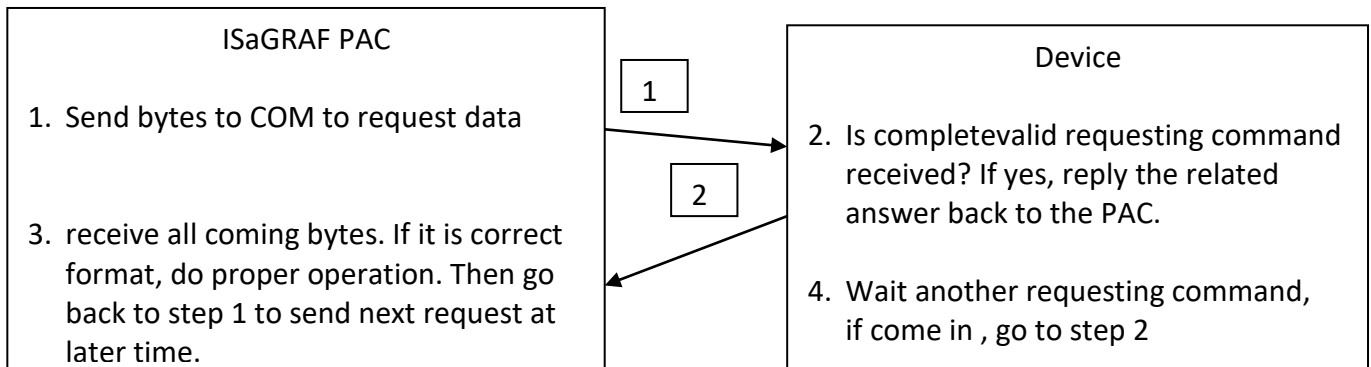
If user want to use COM3 to COM8 of I-7188EG/XG and 7186EG, please plug one extra X-5xx expansion I/O board inside it.

http://www.icpdas.com/en/product/guide+Remote__I_O__Module__and__Unit+PAC__%EF%BC%86amp;__Local__I_O__Modules+X-board

Classification	ISaGRAF English FAQ-007						
Author	Chun Tsai	Version	1.0.0	Date	Aug. 2007	Page	3 / 5

24.1: Controller send 1 request and get 1 reply from device

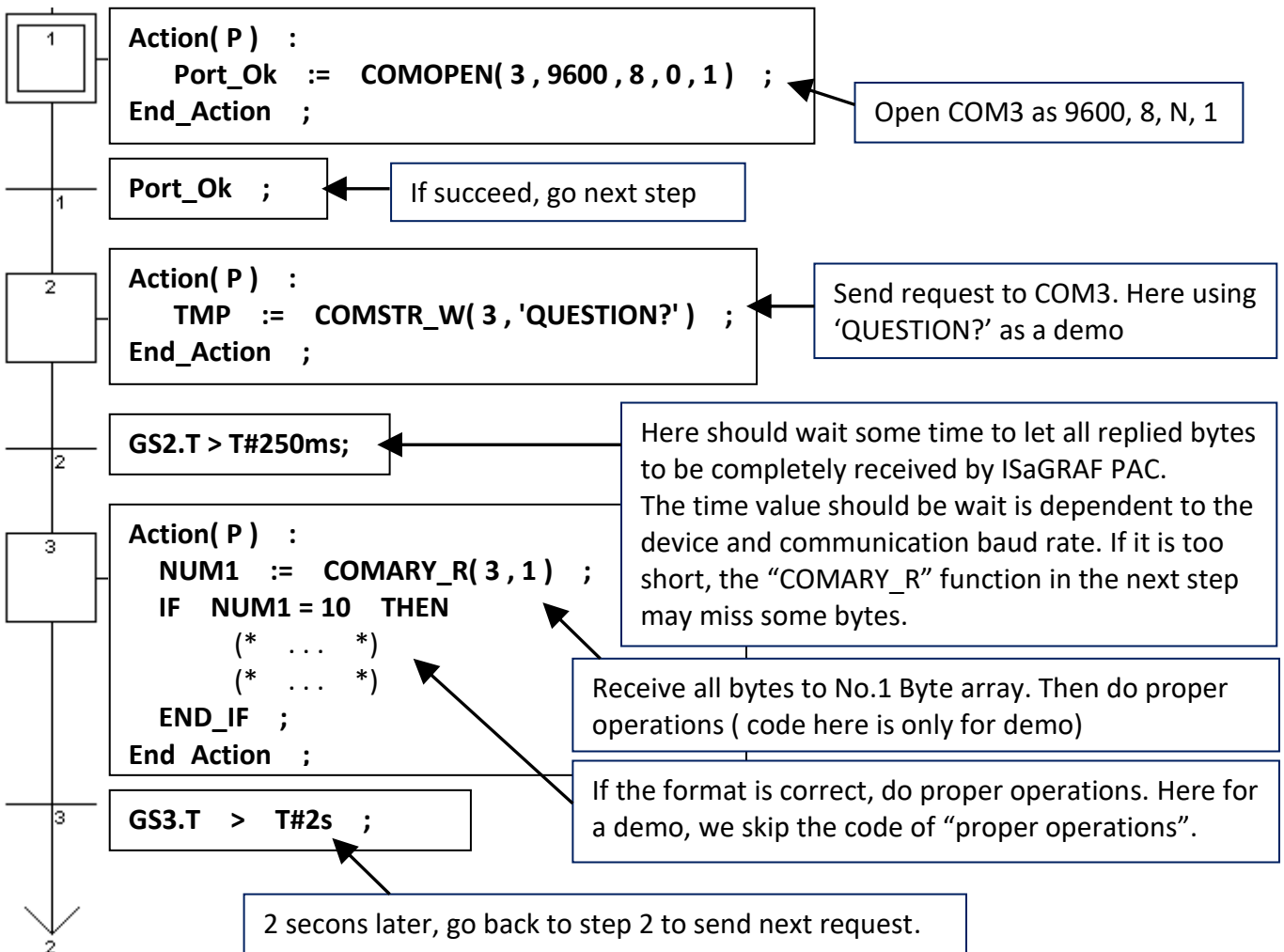
Below figure lists the most common RS-232 / 422 / 485 application.



User can use the below code or similar code to do it.

Below example will send a string "QUESTION?" to device via COM3 , then waiting device to reply the related answer. And then 2 seconds later, send next same question to device , ...

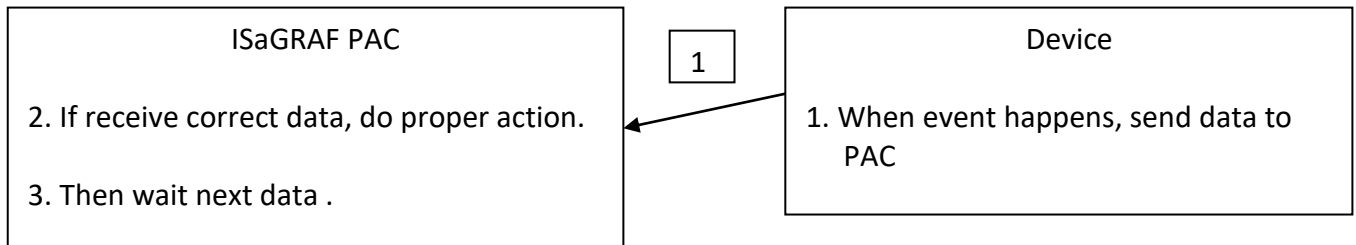
SFC program: ("Port_OK" & "TMP" is Boolean Internal , "NUM1" is Integer Internal)



Classification	ISaGRAF English FAQ-007						
Author	Chun Tsai	Version	1.0.0	Date	Aug. 2007	Page	4 / 5

24.2: PAC just wait data from the remote device

This kind of application is very common in the store. Like the device of “Bar code reader”, when it reads bar code on the product, it will send the related data to the PAC via RS-232/422/485. The PAC just receive it, not necessary to send any byte to device. (Please visit the [ISaGRAF website](#) for demo program and more information.)



ST program:

```

IF INIT THEN
  INIT := FALSE ;
  Port_Ok := COMOPEN( 3 , 9600 , 8 , 0 , 1 ) ;
  T1 := T#0s ;
  STEP := 0 ;
END_IF ;
  
```

Variable declaration

“INIT” is Boolean Internal, init as TRUE
 “Port_Ok” & “TMP” is Boolean Internal
 “T1” is Timer Internal
 “STEP” & “NUM1” is Integer Internal

Open COM3 as 9600, 8, N,1

```

IF Port_Ok = False THEN
  Return ;
END_IF ;
  
```

If open fail, just quit this ST program

CASE STEP OF

```

0 : IF COMREADY(3) THEN
  STEP := 1 ;
  T1 := T#0s ;
  Tstart(T1) ;
END_IF ;
  
```

STEP=0 means “waiting state”, it should check if any byte come in. If “COMREADY” returns TRUE, it means there is at least one byte come in. Then set “STEP” to 1 and start timer “T1” to tick.

```

1 : IF T1 > T#250ms THEN
  Tstop(T1) ;
  T1 := T#0s ;
  STEP := 0 ;
  NUM1 := COMARY_R(3, 1) ;
  
```

STEP=1 means “data is coming”, when “T1” tick to the specified waiting time, call “COMARY_R” to receive all bytes to No.1 byte array (this will make sure all bytes from the “device” all well received). This waiting time is dependent with the “Device” and the communication baud rate. Here we use 0.25 second as a demo. (If setting too short than your device should have, some bytes may be missing) Remember to set “STEP” to 0 to wait next data.

```

  IF NUM1=10 THEN
    (* ... *)
  
```

```

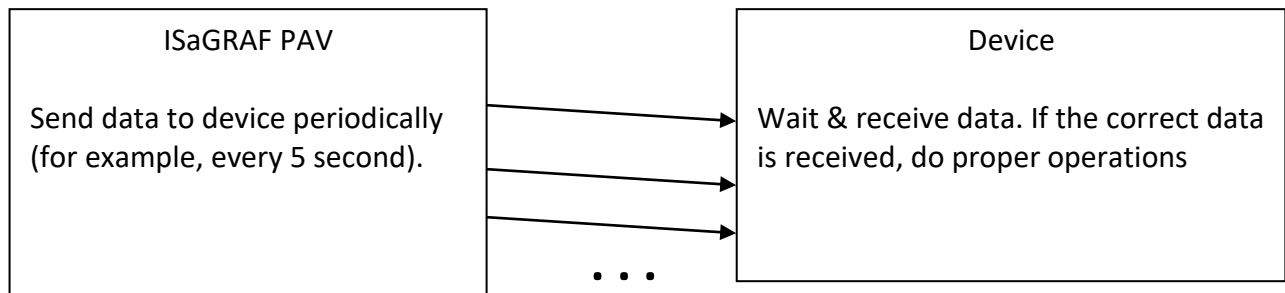
  END_IF ;
END_IF ;
  
```

END_CASE ;

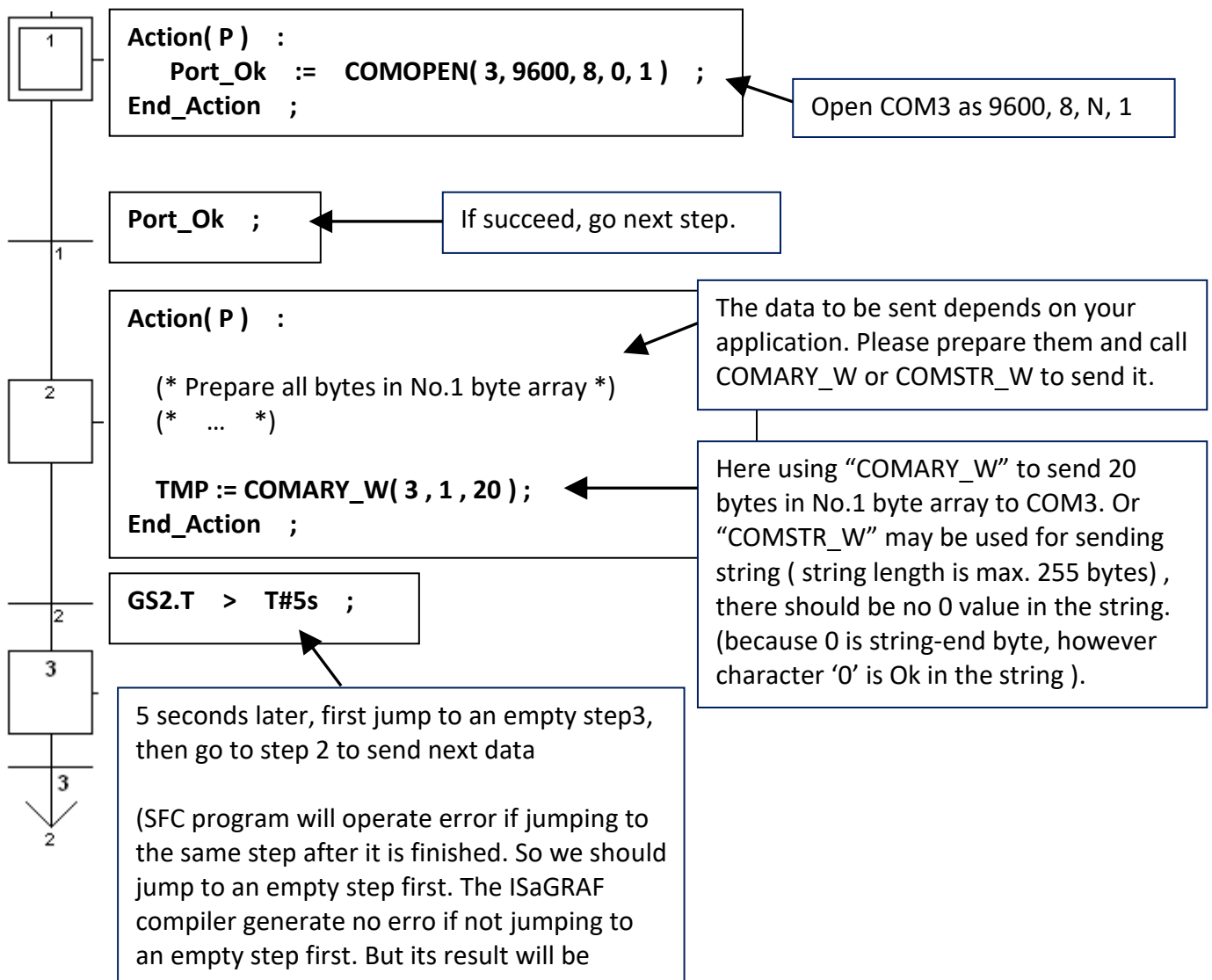
Do proper operation if receive correct data. The code listed here is only for demo. (It is depend with your application, we just assume the correct data has 10 bytes here.)

Classification	ISaGRAF English FAQ-007						
Author	Chun Tsai	Version	1.0.0	Date	Aug. 2007	Page	5 / 5

24.3: Report data to remote device periodically



SFC program: (Please declare "TMP" & "Port_Ok" as Boolean Internal)



24.4: PAC send data when event happens

Please refer to Chapter 11.3.5 of [the ISaGRAF user Manual](#).

Click the link for more [ISaGRAF FAQ](#).