

Classification	ISaGRAF English FAQ-002						
Author	Chun Tsai	Version	1.0.0	Date	Aug. 2007	Page	1 / 2

How to search I/O boards and declare variables automatically for I-8xx7?

Before you can use Auto-scan I/O utility, make sure the “ICP DAS Utilities For ISaGRAF” has been installed. (please refer to section 1.2 of ISaGRAF user’s manual)

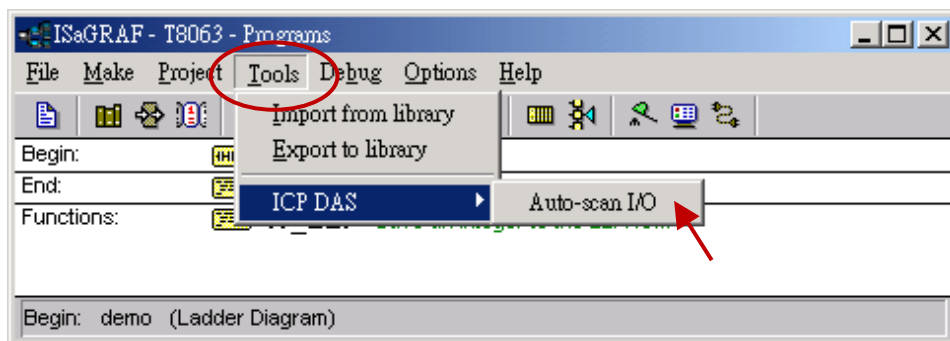
What is Auto-scan I/O :

It’s a tool for ISaGRAF to easily configure your I/O connection and automatically declare variables for each I/O channel in I-8xx7 and WinCon-8xx7 PACs. (I-7188EG/XG doesn’t support Auto-scan I/O)

How to use ?

A. Open your ISaGRAF program.

B. Click on “Tools/ICP DAS/Auto-scan I/O” to run Auto-scan.

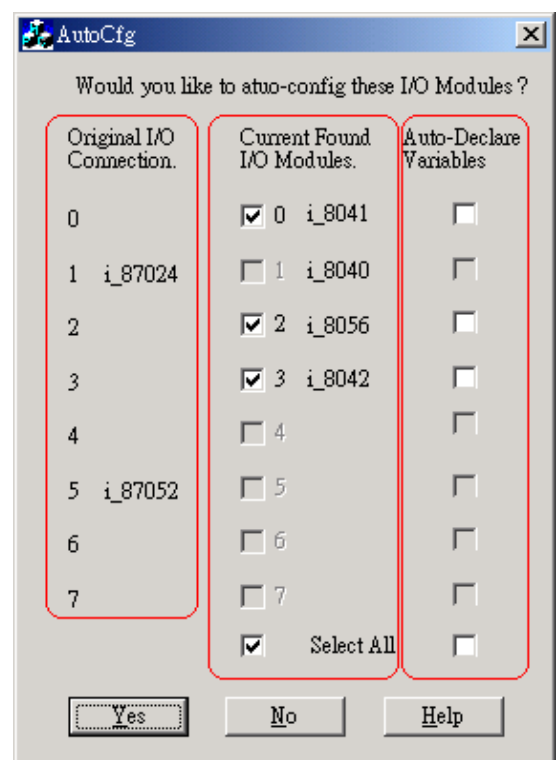


C. The Auto-scan I/O is divided into three area.

Original I/O Connection shows the modules that already exist in your I/O connection at the first eight slots of your ISaGRAF project.

Current Found I/O Modules shows the I/O modules that detected in your PAC (By RS232 or TCP/IP).

Auto-Declare Variables shows what modules that you want Auto-scan to automatically declare variables for you also.



Classification	ISaGRAF English FAQ-002						
Author	Chun Tsai	Version	1.0.0	Date	Aug. 2007	Page	2 / 2

D. In the “Current Found I/O Modules.” area:

The check box will be enable only when an I/O module is detected in the PAC and the slot is **not used** by original I/O connection.

E. In the “Auto-Declare Variables”:

The check box can be enable only when one I/O module **is checked** in the current found area.

F. You can check the “Select All” to check all available boxes in the respective area.

What is necessary for Auto-scan I/O ?

A. Make sure the “Link setup” parameter is correct.

B. Plug in I/O boards first before your ISaGRAF can detect them.

Naming rules of automatically declared variables

Name format: Type_Slot_Channel

Type:

Digital Input: DI
Digital Output: DO
Analog Input: AI
Analog Output: AO

Slot: one digital slot number.
Channel : two digital channel number.

For example,

DI_0_02 , Digital Input channel at channel No.2 of slot 0.

AI_5_06 , Analog Input channel at channel No.6 of slot 5.

DO_2_12, Digital Output channel at channel No.12 of slot 2.

AO_1_03, Analog Output channel No. 3 of slot 1.

Note:

I-8xx7 & WinCon-8xx7 supports “Auto-Scan”, however I-7188EG/XG doesn’t support it.

Click the link for more ISaGRAF FAQ:

<http://www.icpdas.com/en/faq/index.php?kind=280#751>