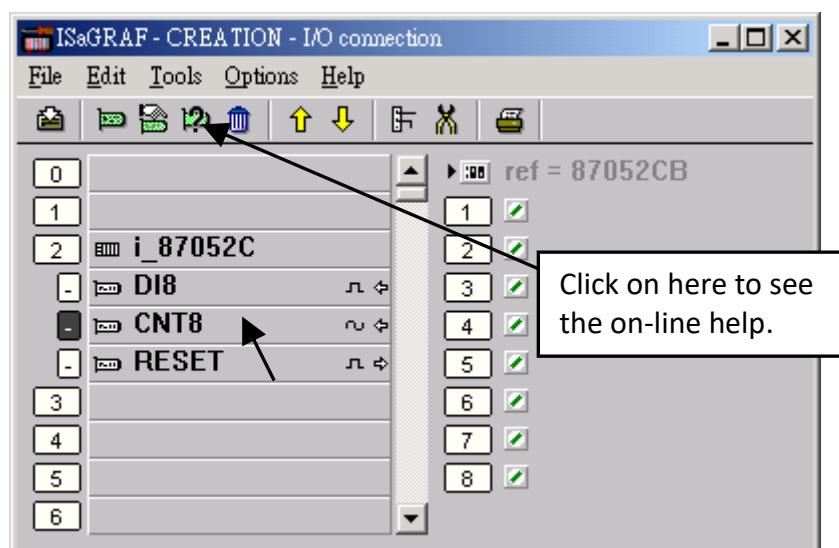
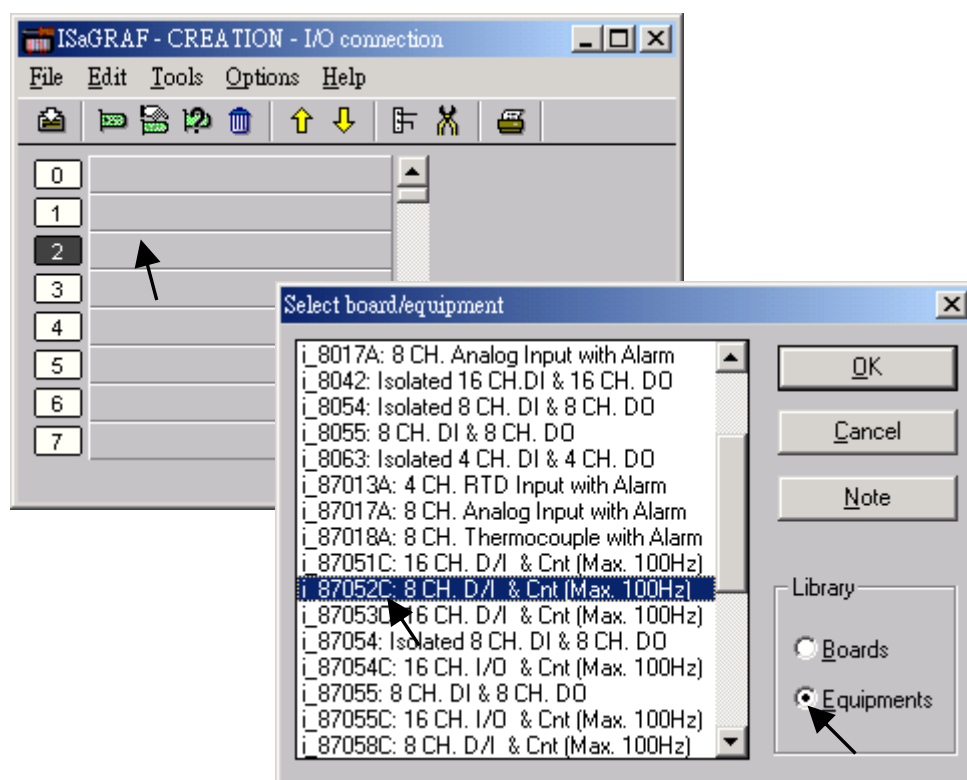


Classification	ISaGRAF English FAQ-001						
Author	Chun Tsai	Version	1.0.0	Date	Aug. 2007	Page	1 / 2

## How to get counter value built in I-7000 & I-87K remote I/O modules?

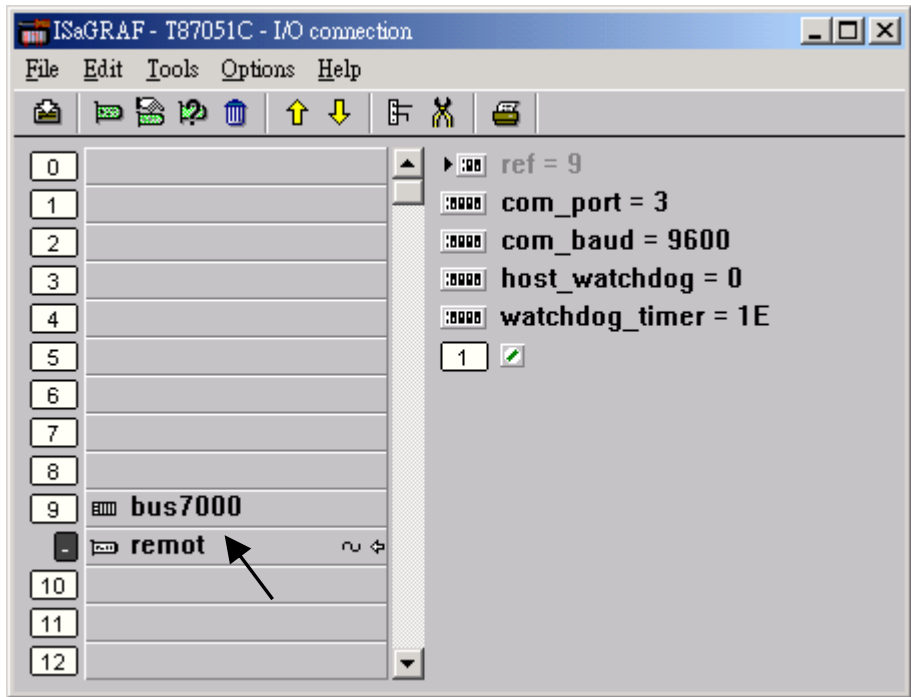
87051, 87052, 87053, 87054, 87055, 87058 & 87063 have built-in low speed D/I counters associated with each D/I channel. The max counter speed of these modules is 100Hz. The counter value is ranging from 0 to 65535 and can be reset to 0.

To use these D/I counters, connect these I/O modules with a last character – “C”. For ex. “i\_87052C”.

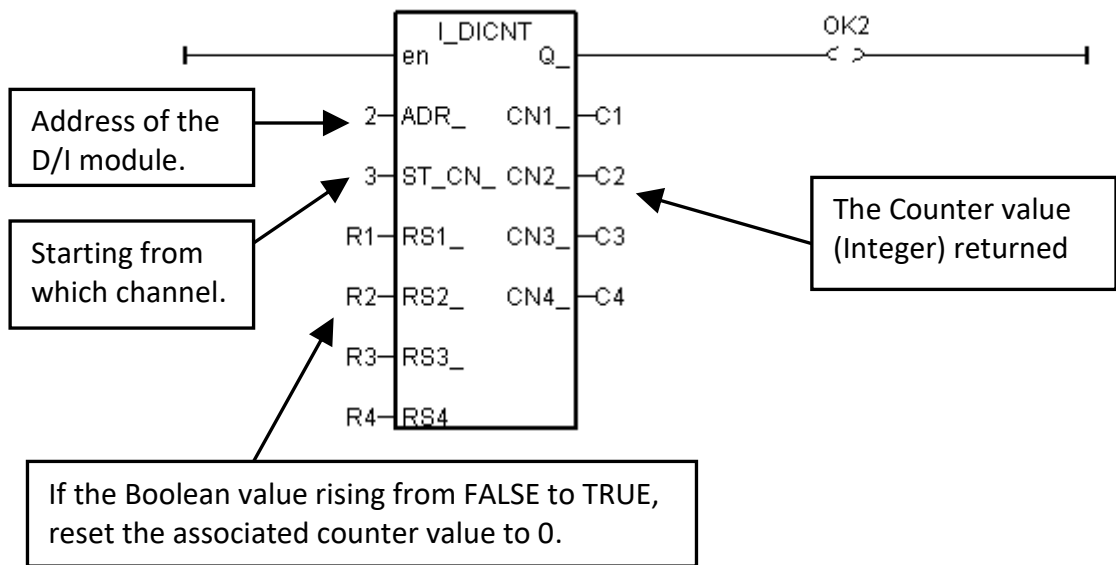


Classification	ISaGRAF English FAQ-001					
Author	Chun Tsai	Version	1.0.0	Date	Aug. 2007	Page 2 / 2

If the I-87xxx D/I Module is plugged in the 87K4, 87K5, 87K8 & 87K9 extension base module, or the I-7000 D/I module is used, Please refer to Chapter 6 to use “7000 utility” to set the appropriate address, baud rate , then connect “Bus7000” on the “I/O connection” window.



Then using “I\_DiCnt” block to get the “D/I Counter” value. Each “I\_DiCnt” can get 4 counters.



Click the link for more ISaGRAF FAQ:

<http://www.icpdas.com/en/faq/index.php?kind=280#751>