

分類/Classification	<input type="checkbox"/> tDS/tGW/tSH	<input type="checkbox"/> PETL/tET/tPET	<input type="checkbox"/> DS/PDS/PPDS	<input type="checkbox"/> tM-752N
	<input type="checkbox"/> I/O Card	<input type="checkbox"/> VXC Card	<input checked="" type="checkbox"/> TouchPAD/HMIWorks	<input type="checkbox"/> VxComm
作者/Author		日期/Date		編號/NO.

Q: How do I migrate project from VPD-13x-H to VPD-13x-H2?

Due to the unstable LCD supply situation, the VPD-13x-H series products will be replaced by the new VPD-13x-H2 series, the details information are as follows.

Selection guide

VPD-130(N)-H and VPD-130(N)-H2 will be on sale at the same time , please refer to the following table for cross reference information.

Model Name	VPD-130-H VPD-130N-H	VPD-130-H2 VPD-130N-H2
Product Status	Depend on the LCD supply situation	Available
CPU	32-bit RISC CPU	32-bit RISC CPU
Memory Expansion	16 MB SDRAM/ 16 MB Flash	16 MB SDRAM/ 16 MB Flash
RTC	Yes	Yes
Buzzer	Yes	Yes
Rotary Switch (0~9)	Yes	Yes
LCD	3.5 TFT (Resolution 240 x 320 x 16)	3.5 TFT (Resolution 240 x 320 x 16)
Serial Port	1 X RS-232/RS-485	1 X RS-232/RS-485
Firmware updates	USB 1.1 Client	USB 1.1 Client
Ethernet	No	No
Rubber Keypad	Yes , only supports VPD-130-H	Yes , only supports VPD-130-H2

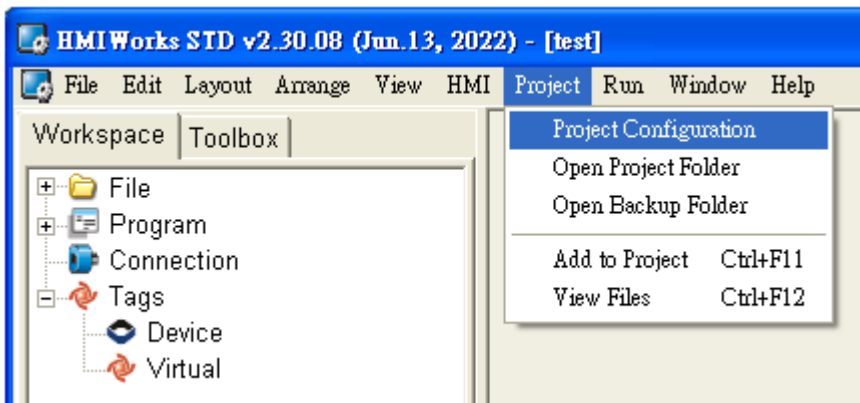
VPD-132(N)-H and VPD-133(N)-H will be discontinued and End of Life (EOL), it is recommended that use VPD-133(N)-H2, please refer to the following table for cross reference information.

Model Name	VPD-132-H VPD-132N-H	VPD-133-H VPD-133N-H	VPD-133-H2 VPD-133N-H2
Product Status	While Supply Last	While Supply Last	Available
CPU	32-bit RISC CPU	32-bit RISC CPU	32-bit RISC CPU
Memory Expansion	16 MB SDRAM/ 16 MB Flash	16 MB SDRAM/ 16 MB Flash	16 MB SDRAM/ 16 MB Flash
RTC	Yes	Yes	Yes
Buzzer	Yes	Yes	Yes
Rotary Switch (0~9)	Yes	Yes	Yes
LCD	3.5 TFT (Resolution 240 x 320 x 16)	3.5 TFT (Resolution 240 x 320 x 16)	3.5 TFT (Resolution 240 x 320 x 16)
Serial Port	1 X RS-232/RS-485 1 X RS-485	1 X RS-232/RS-485 1 X RS-485	1 X RS-232/RS-485 1 X RS-485
Firmware updates	USB 1.1 Client	USB 1.1 Client or Ethernet	USB 1.1 Client or Ethernet
Ethernet	No	RJ-45 x 1, 10/100 Base-TX	RJ-45 x 1, 10/100 Base-TX
Powered from PoE	No	IEEE 802.3af, Class1 (48 V)	IEEE 802.3af, Class1 (48 V)
Rubber Keypad	Yes , only supports VPD-132-H	Yes , only supports VPD-133-H	Yes , only supports VPD-133-H2

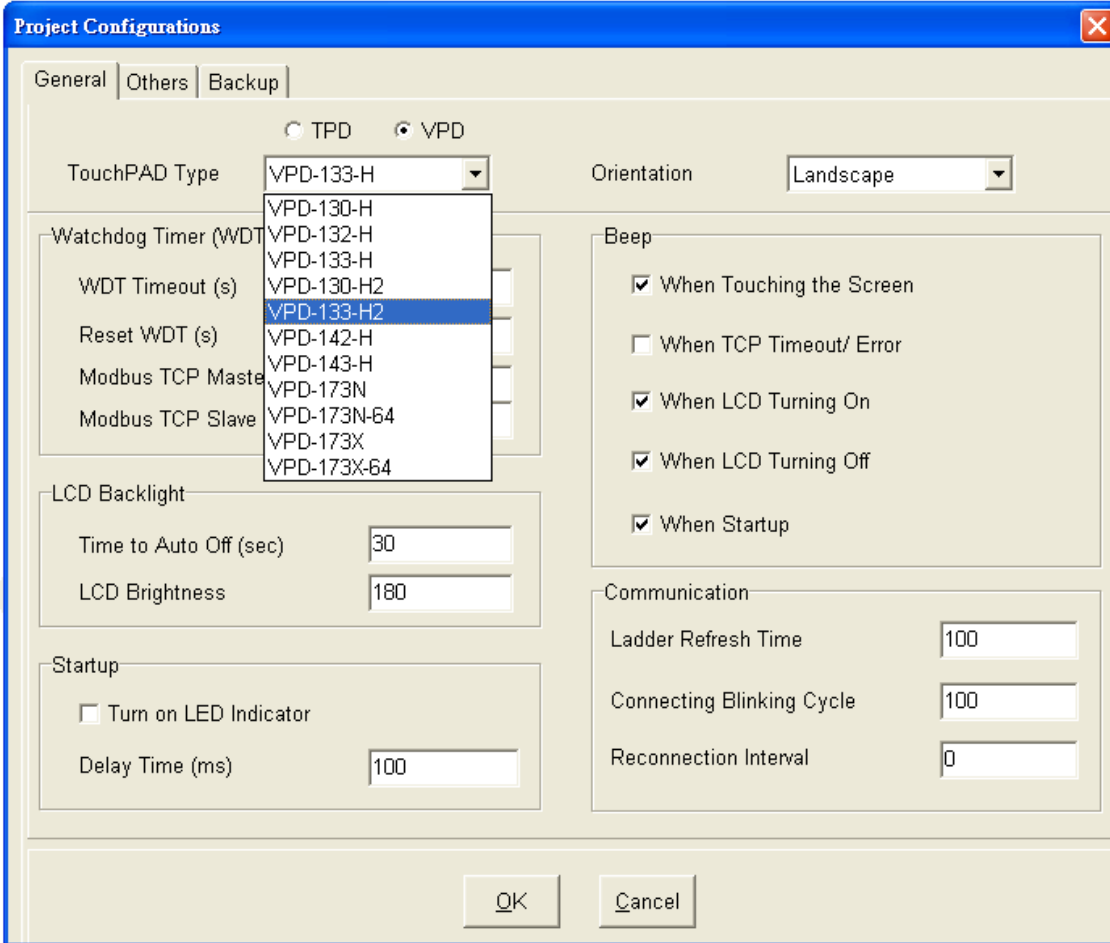
Migrate Project

VPD-13x-H's source code is 100% compatible with VPD-13x-H2 but needs to choose -H2 model name while compiling the project file via HMIworks. Please refer to the following steps to migrate your project to VPD-13x-H2.

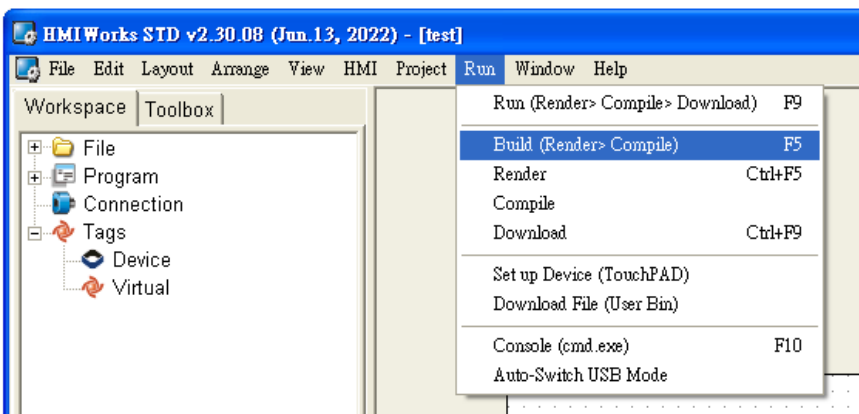
1. Open original project by using HMIWorks v2.30.08 or last version.
2. Click the HMIWorks menu item " **Project/Project Configuration** ".



3. Click the **"General"** page.
4. Change the **"TouchPAD Type"** to your module name, e.g. **VPD-133-H2**.
5. Click **"OK"** button.



6. Click the HMIWorks menu item **"Run/Build (Render>Compile)"** to rebuild project or press **F5**.



For more information, please visit the link below:

https://www.icpdas.com/en/product/guide+Panel_Products+TouchPAD+TPD_Series#884