

Classification	NAPOPC_XPE FAQ				No.	1-010-E	
Author	James	Version	1.0.0	Date	2010/7/12	Page	1/4

## How to use ZigBee modules in NAPOPC\_XPE?

*Applies to:*

Platform	OS version	NAPOPC version
XPAC	XPE	NAPOPC_XPE v1.12

Assume that we now have a group of Zigbee modules:

**ZB-2550 (Host Converter)**

**ZB-2052 (DI)**

**ZB-2060 (DIO)**

If we can connect NAPOPC\_XPE to ZB-2550, then we can exchange data with ZB-2052/ZB-2060 further.

We have two ways to establish communication:

Search (Automatic) / Add device (Manual)

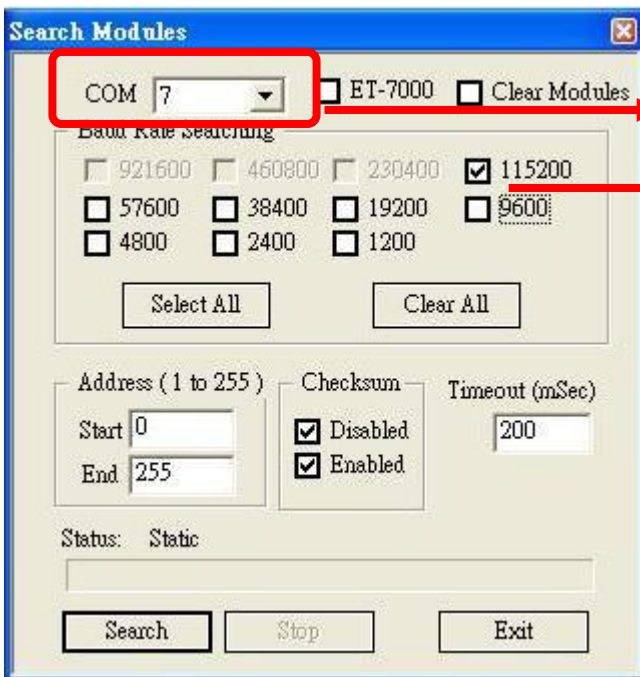
**Search (Automatic)**

**Step 1**



Click "Search" on the Toolbar to scan modules connected with your XPAC. It will show you the dialog as below. After setting up, just click "search".

Classification	NAPOPC_XPE FAQ				No.	1-010-E	
Author	James	Version	1.0.0	Date	2010/7/12	Page	2/4

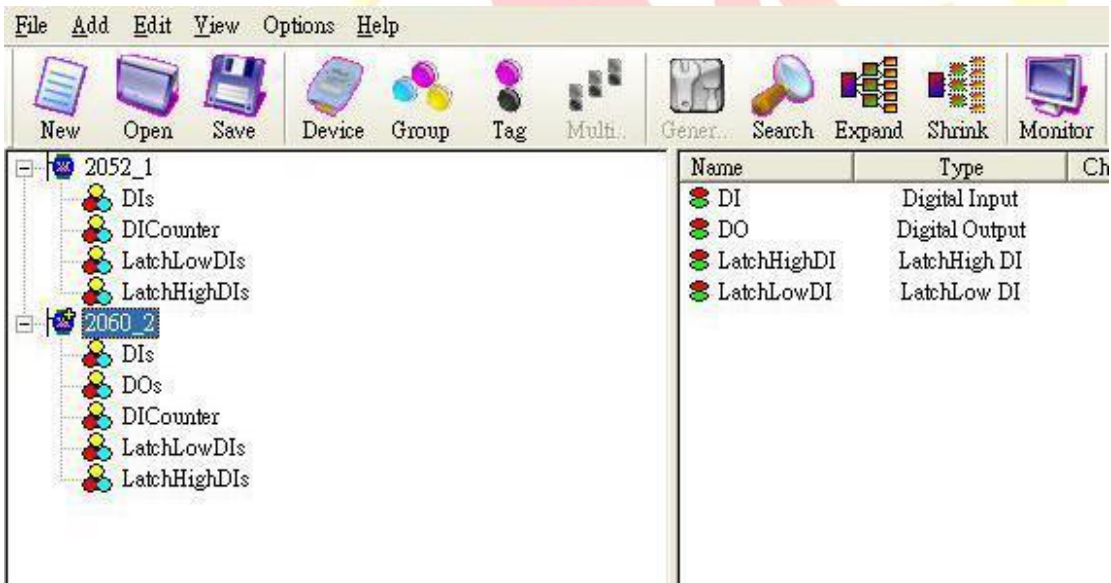


**COM port connected with ZB-2550**

**Baud rate between PC and ZB-2550**

## Step 2

After searching, NAPOPC\_XPE is able to communicate with ZB-2052 and ZB-2060.



Classification	NAPOPC_XPE FAQ				No.	1-010-E	
Author	James	Version	1.0.0	Date	2010/7/12	Page	3/4

## Add device (Manual) (DCON)

### Step 1



Click “Device” on the Toolbar, it will show you the dialog as below. Check the options which are marked, then click “OK” to add device.

The screenshot shows the 'Select Device' dialog box with several elements highlighted by red boxes and yellow callout boxes:

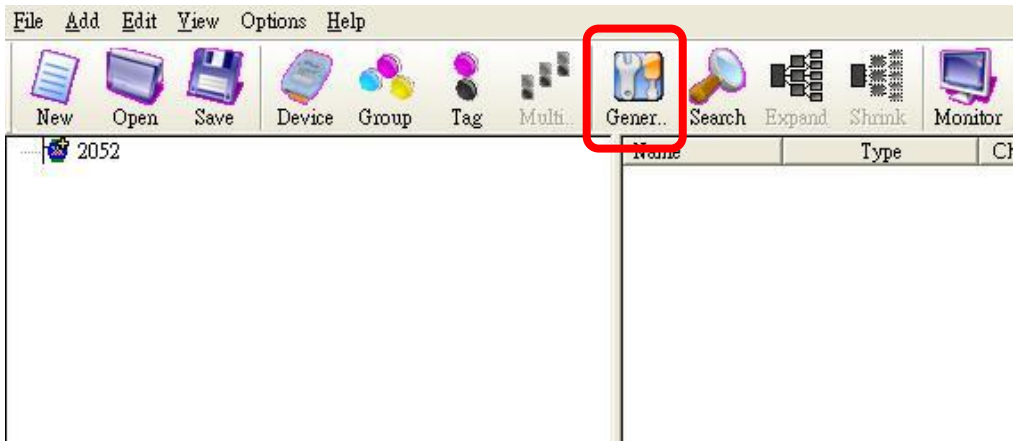
- Protocol between XPAC and ZB-2550:** A yellow callout box points to the 'DCON' radio button, which is also highlighted with a red box.
- Module name:** A yellow callout box points to the 'ZB-2K' dropdown menu in the 'Module Setting' section, which is highlighted with a red box.
- Address of ZB-2550:** A yellow callout box points to the 'Address' text box containing the value '1', which is highlighted with a red box.
- COM port connected with ZB-2550 Baud rate between XPAC and ZB-2550:** A yellow callout box points to the 'COM' dropdown menu in the 'COM Port Setting' section, which is highlighted with a red box.

Other visible settings in the dialog include: Device Name: 2052; I-7K/I-8K/I-87K/ZB-2K I/O Module; Remote selected; 7K selected; Slot: 0; Checksum: Disable; COM: 7; Baud Rate: 115200; Parity: None; Data Bits: 8; Stop Bits: 1; IP Address: 192.168.0.1; Pending Time: 1000 ms.

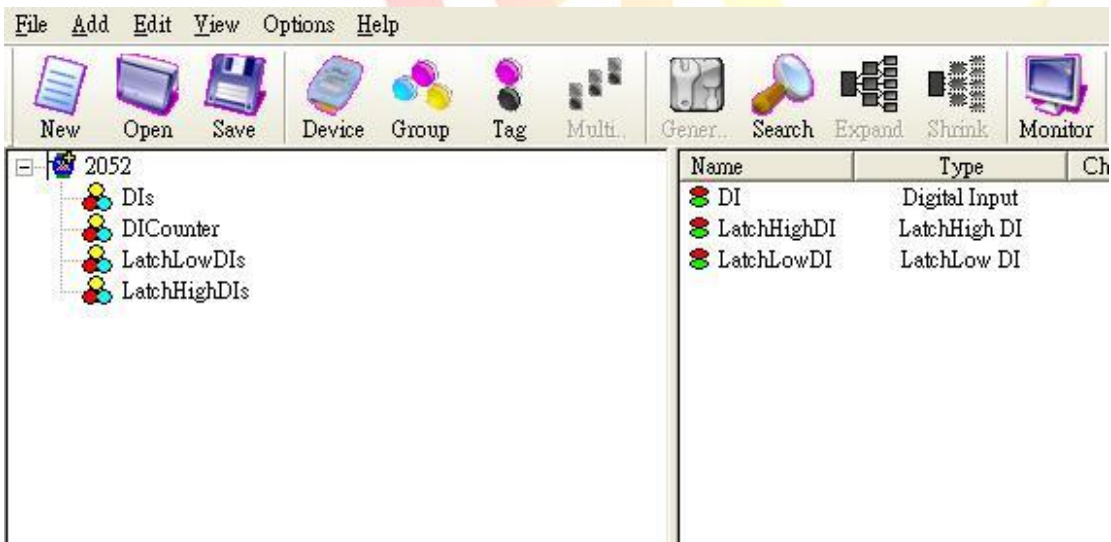
Classification	NAPOPC_XPE FAQ				No.	1-010-E	
Author	James	Version	1.0.0	Date	2010/7/12	Page	4/4

### Step 2

ZB-2052 is added :



Click “**Generate Tag**” on the Toolbar, it will add all tags for you according to ZB-2052 specification.



### Step 3

Use the same procedure to establish ZB-2060. And then NAPOPC\_XPE will be able to communicate with ZB-2052 and ZB-2060.