

Classification	NAPOPC_CE6 FAQ				No.	1-004-E	
Author	James	Version	1.0.0	Date	2010/7/12	Page	1/4

How to use ZigBee modules in NAPOPC_CE6?

Applies to:

Platform	OS version	NAPOPC version
XP-8000-CE6	CE6	NAPOPC_CE6 v1.00

Assume that we now have a group of Zigbee modules:

ZB-2550 (Host Converter)

ZB-2052 (DI)

ZB-2060 (DIO)

If we can connect NAPOPC_CE6 to ZB-2550, then we can exchange data with ZB-2052 / ZB-2060 further.

We have two ways to establish communication:

Search (Automatic) / Add device (Manual)

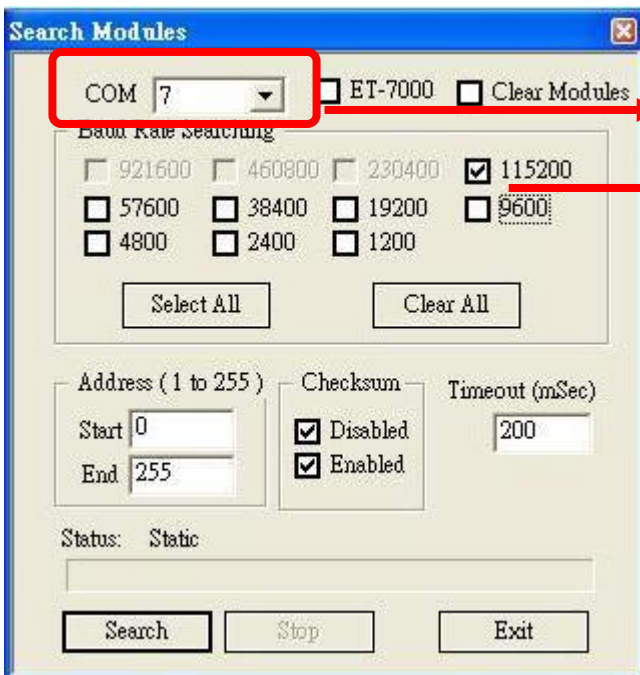
Search (Automatic)

Step 1



Click "**Search**" on the Toolbar to scan modules connected with your PC. It will show you the dialog as below. After setting up, just click "search".

Classification	NAPOPC_CE6 FAQ				No.	1-004-E	
Author	James	Version	1.0.0	Date	2010/7/12	Page	2/4

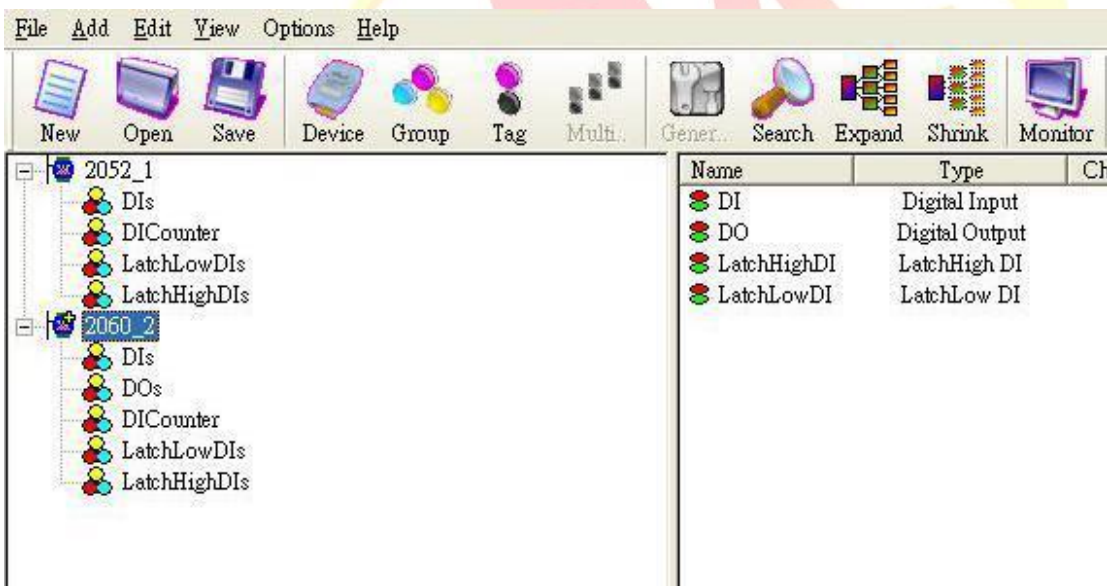


COM port connected with ZB-2550

Baud rate between PC and ZB-2550

Step 2

After searching, NAPOPC_CE6 is able to communicate with ZB-2052 and ZB-2060.



Classification	NAPOPC_CE6 FAQ				No.	1-004-E	
Author	James	Version	1.0.0	Date	2010/7/12	Page	3/4

Add device (Manual) (DCON)

Step 1



Click "Device" on the Toolbar, it will show you the dialog as below. Check the options which are marked, then click "OK" to add device.

Select Device

DCON Protocol between XP-8000-CE6 and ZB-2550

Device Name: 2052

I-7K/I-8K/I-87K/ZB-2K I/O Module

Module Setting:

Remote 7K ZB-2K 2052 Module name

With Controller Controller: 87K

8K

Address: 1 Address of ZB-2052

Slot: (0~7 for 8K Modules) Checksum: Disable

COM Port Setting:

COM: 7 Parity: None

Baud Rate: 115200 Data Bits: 8

Stop Bits: 1

RPC

Controller Setting:

IP Address: 192.168

Simulate I/O (does not access the RS-485/Modbus device)

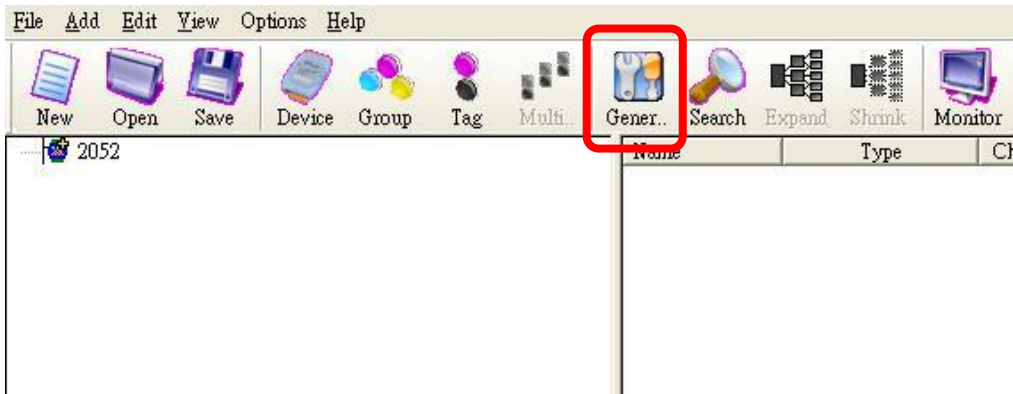
Pending Time: 1000 ms

OK Cancel

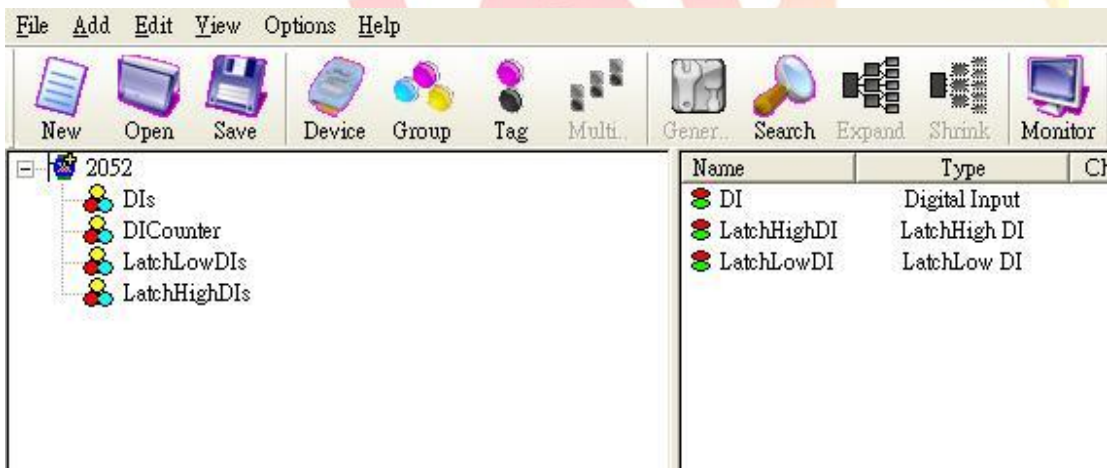
Classification	NAPOPC_CE6 FAQ				No.	1-004-E	
Author	James	Version	1.0.0	Date	2010/7/12	Page	4/4

Step 2

ZB-2052 is added :



Click "Generate Tag" on the Toolbar, it will add all tags according to the ZB-2052 specification.



Step 3

Use the same procedure to establish ZB-2060. And then NAPOPC_CE6 will be able to communicate with ZB-2052 and ZB-2060.