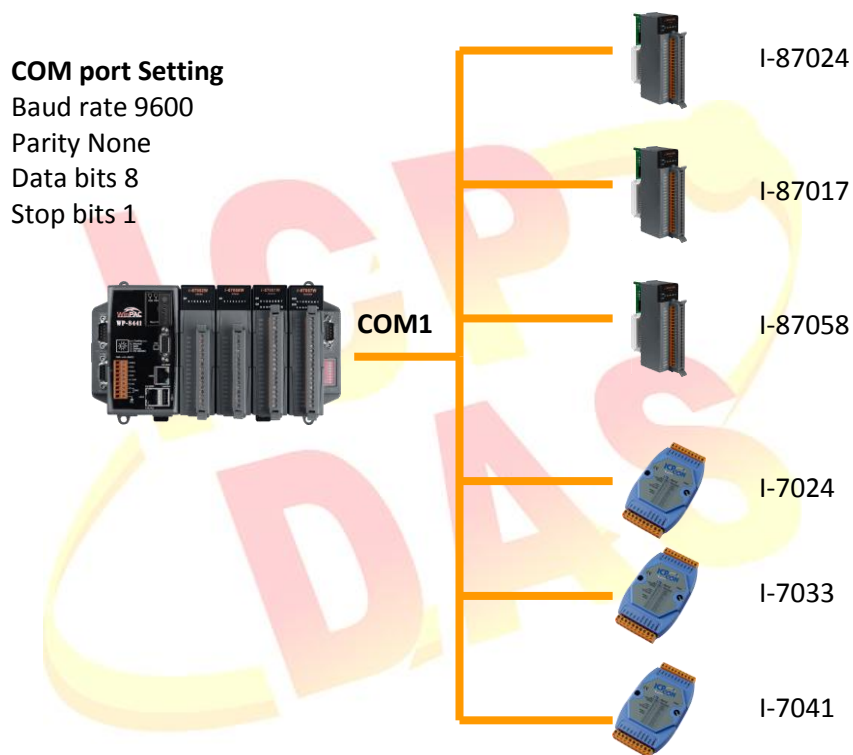


Classification	NAPOPC_CE5 FAQ				No.	1-004-E	
Author	James	Version	1.0.0	Date	2010/7/12	Page	1/3

## How to optimize communication performance in NAPOPC\_CE5?

Applies to:

<i>Platform</i>	<i>OS version</i>	<i>NAPOPC version</i>
WinPAC/ViewPAC	CE5	NAPOPC_CE5 v2.20

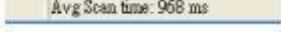


**Here is an assumed architecture:**

We connect to I-87024/I-87017/I-87058/I-7024/I-7033/I-7041 via COM1 of WinPAC. Search all modules via COM1, and then we could get these modules in NAPOPC\_CE5 Server.

<ul style="list-style-type: none"> <li>+ 87024</li> <li>+ 87017</li> <li>+ 87058</li> <li>+ 7033</li> <li>+ 7041</li> <li>- 7024</li> <li>  AOs</li> </ul>	<table border="1"> <thead> <tr> <th>Name</th> <th>Type</th> </tr> </thead> <tbody> <tr> <td>Ch00</td> <td>Analog Output</td> </tr> <tr> <td>Ch01</td> <td>Analog Output</td> </tr> <tr> <td>Ch02</td> <td>Analog Output</td> </tr> <tr> <td>Ch03</td> <td>Analog Output</td> </tr> </tbody> </table>	Name	Type	Ch00	Analog Output	Ch01	Analog Output	Ch02	Analog Output	Ch03	Analog Output
Name	Type										
Ch00	Analog Output										
Ch01	Analog Output										
Ch02	Analog Output										
Ch03	Analog Output										

Classification	NAPOPC_CE5 FAQ				No.	1-004-E	
Author	James	Version	1.0.0	Date	2010/7/12	Page	2/3

Click any one module, and we could see “Average Scan Time”  on the status bar of NAPOPC\_CE5 window. Now Average Scan Time we get is 968 ms.

	COM1					
<b>Module</b>	I-87024	I-87017	I-87058	I-7033	I-7041	I-7024
<b>Avg Scan Time</b>	968ms					

So far, the Access-Interval of Each module is 968 ms.

If we intend to set the Access-Interval as below:

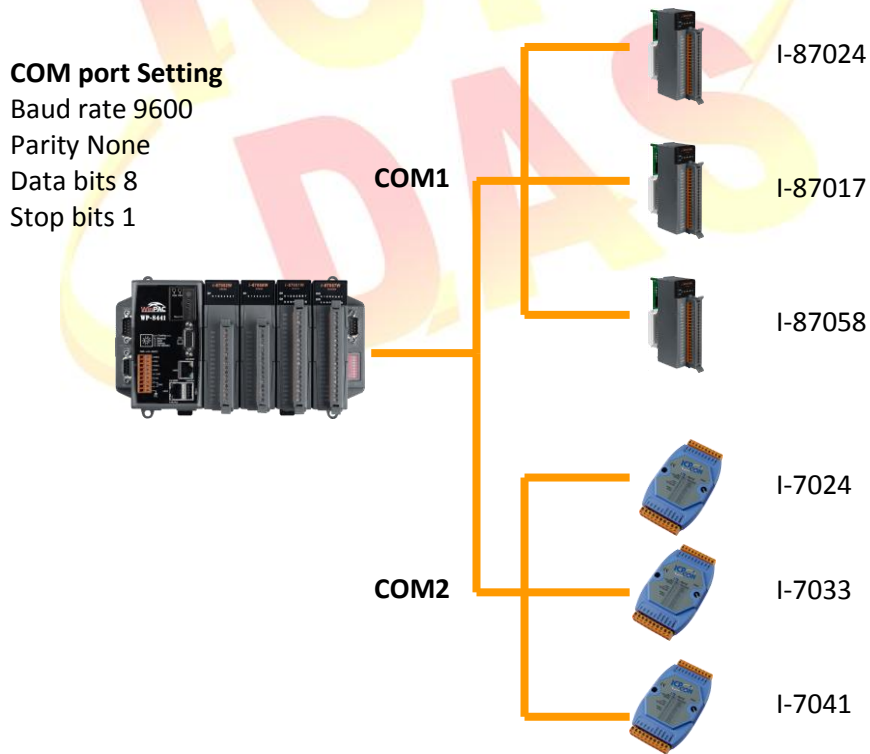
I-87024/I-7024: 1 Second

I-87058/I-7041: 3 Second

I-87017/I-7033: 100ms

**We could operate as following steps:**

1. Divide these modules into two different COM ports. Connect I-87024/I-87017/I-87058 to COM1, and connect I-7024/I-7033/I-7041 to COM2.



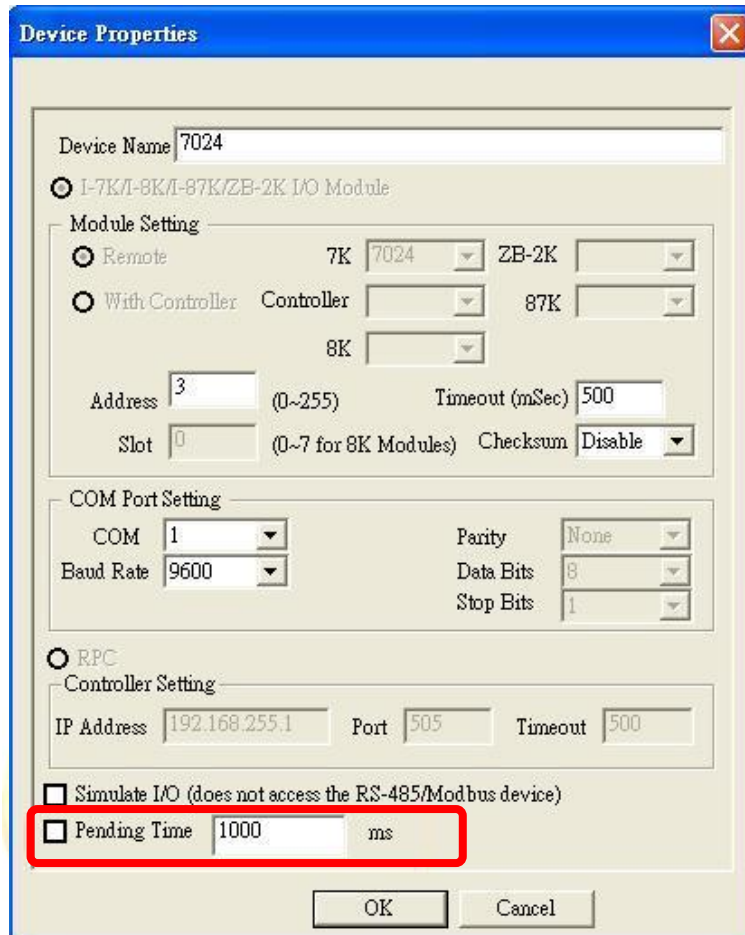
2. Search modules via COM1/COM2 again, and then check “Average Scan Time”.

We will find “Average Scan time” has been getting faster:

Classification	NAPOPC_CE5 FAQ				No.	1-004-E	
Author	James	Version	1.0.0	Date	2010/7/12	Page	3/3

	COM1			COM2		
<b>Module</b>	I-87024	I-87017	I-87058	I-7033	I-7041	I-7024
<b>Avg Scan Time</b>	391 ms			516 ms		

3. We could adjust “Pending Time” to enhance the performance of communication further. Enter the Controller Setting table to look for the “Pending Time” option.



According to our requirement, change the “Pending Time” as following

	I-7033	I-7041	I-7024
<b>Pending Time</b>	—	<b>2000</b>	<b>800</b>

	I-87024	I-87017	I-87058
<b>Pending Time</b>	<b>800</b>	—	<b>2000</b>

After we accomplish it, we could get better “Average Scan Time” as 62ms and 31ms.

Finally, we have improved Access-Interval and set different intervals for different modules.

	COM 1			COM2		
<b>Module</b>	I-87024	I-87017	I-87058	I-7033	I-7041	I-7024
<b>Avg Scan Time</b>	<b>62 ms</b>			<b>31 ms</b>		