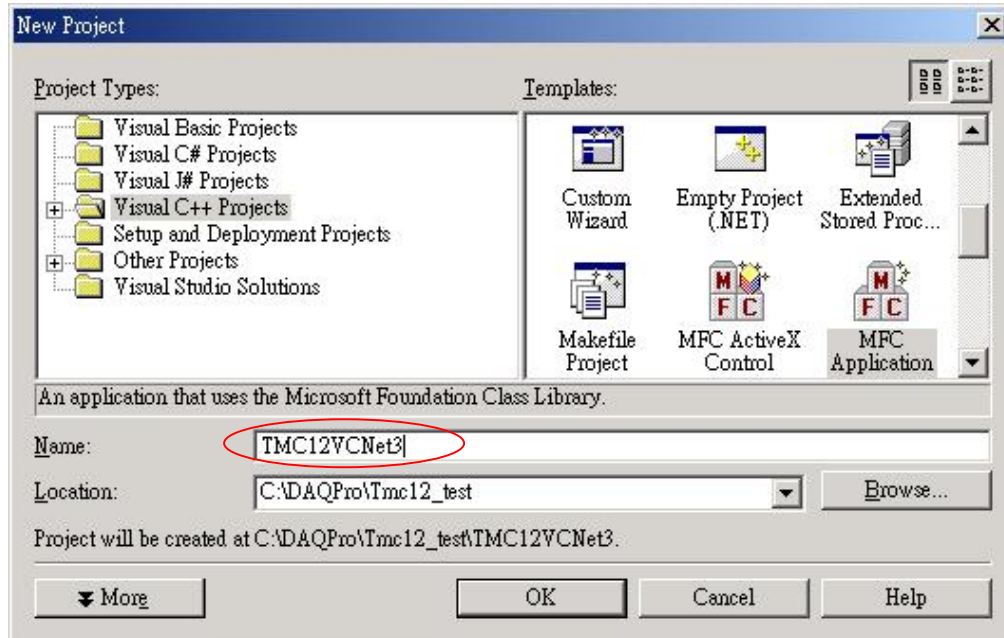
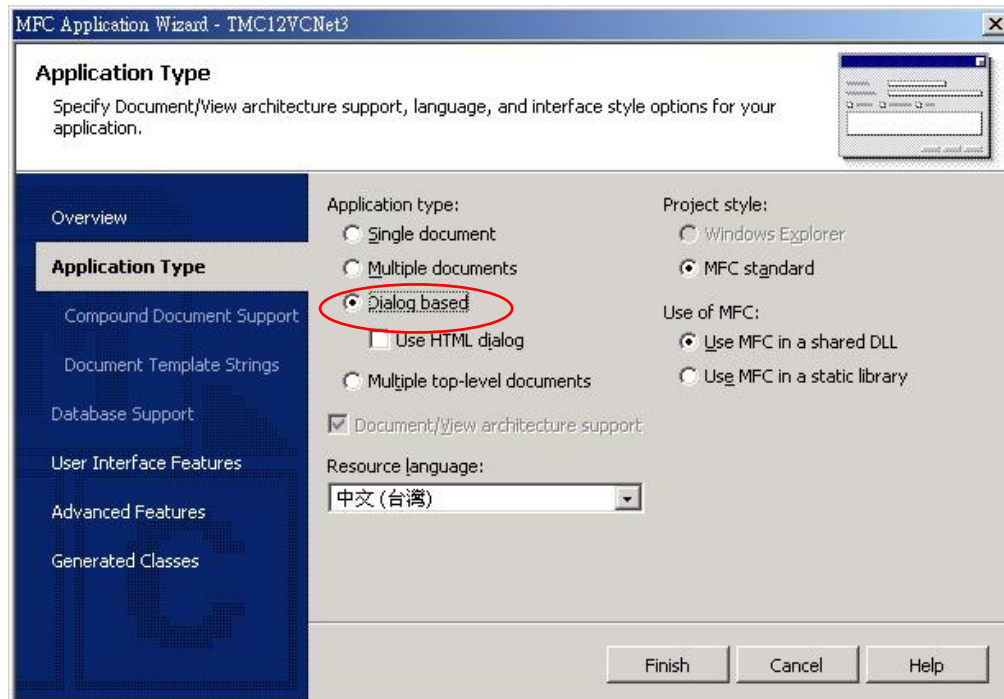


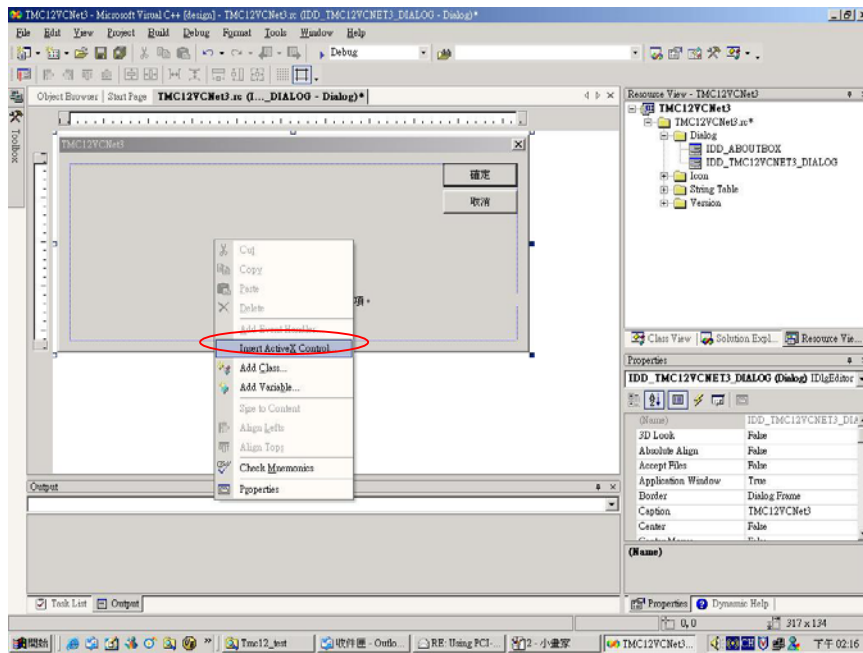
1. Open Microsoft Visual Studio .Net 2003.
2. Select **Visual C++ Projects, MFC Application**, type your project's name and then click **“OK”**



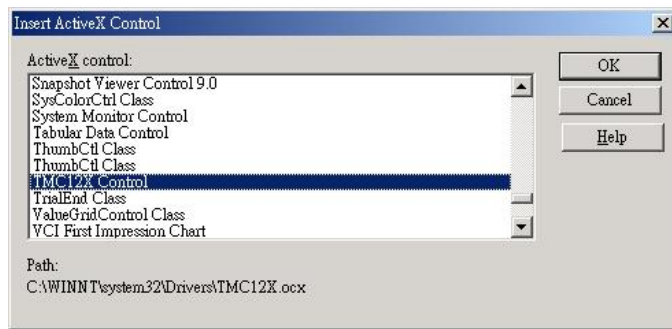
3. In the **Application Type** page, select **“Dialog based”** and click **“Finish”**.



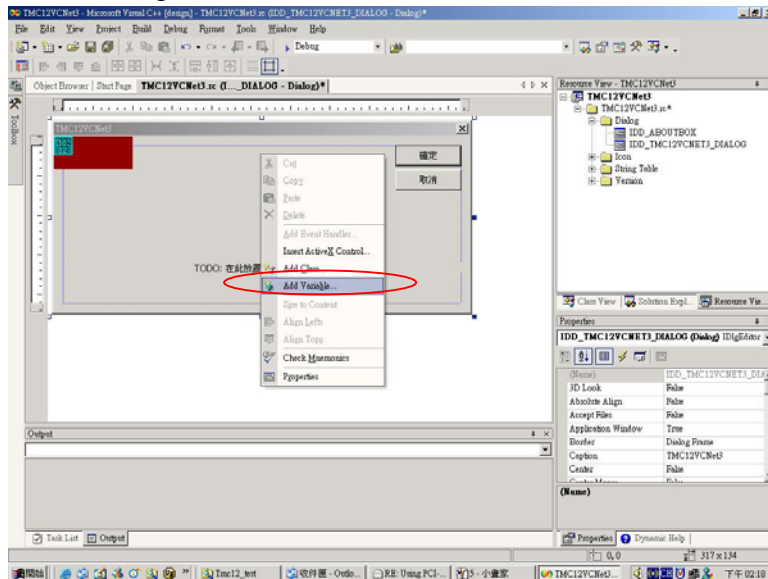
4. Mouse right click and select **“Insert ActiveX Control”**.



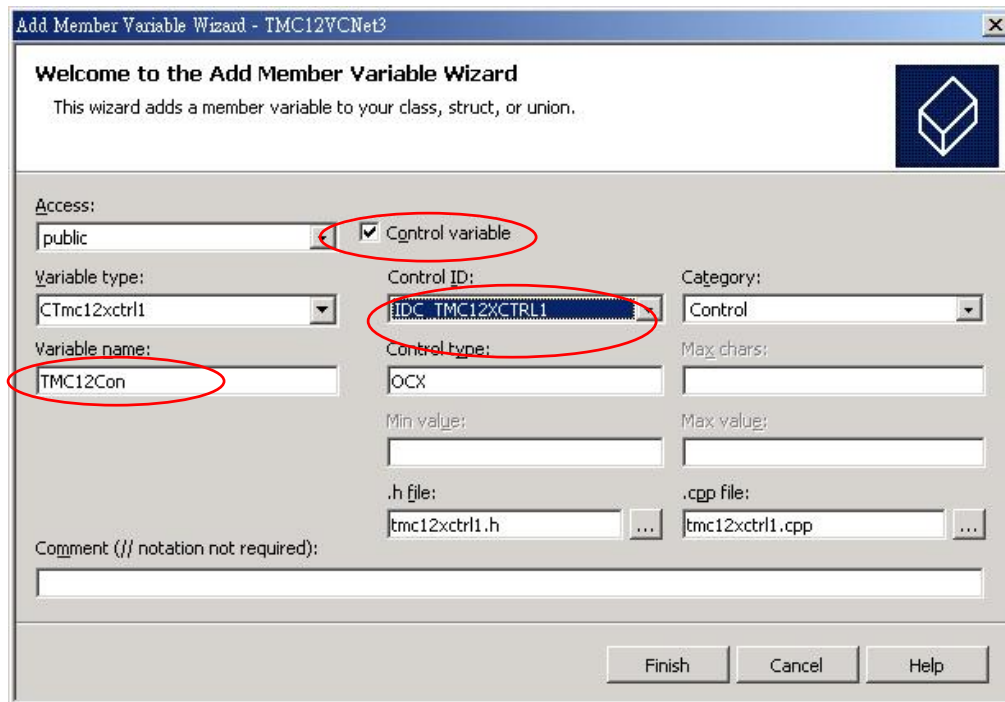
5. Select **TMC12X Control** and click **“OK”**.



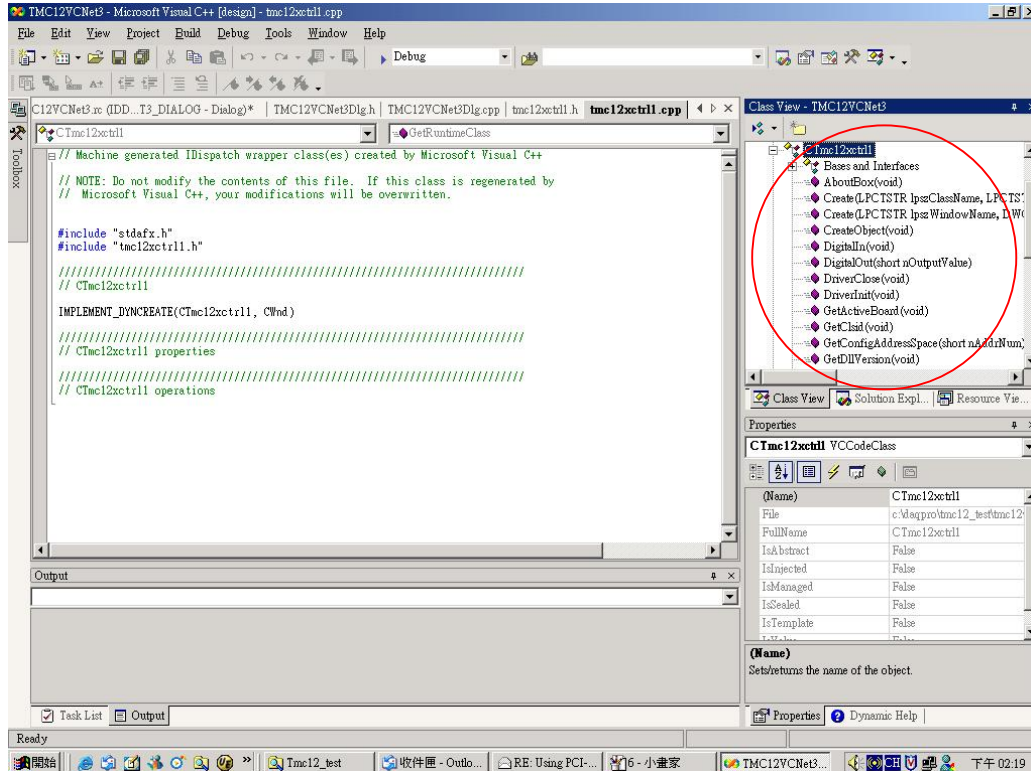
6. Mouse right click and select **“Add Variable”**.



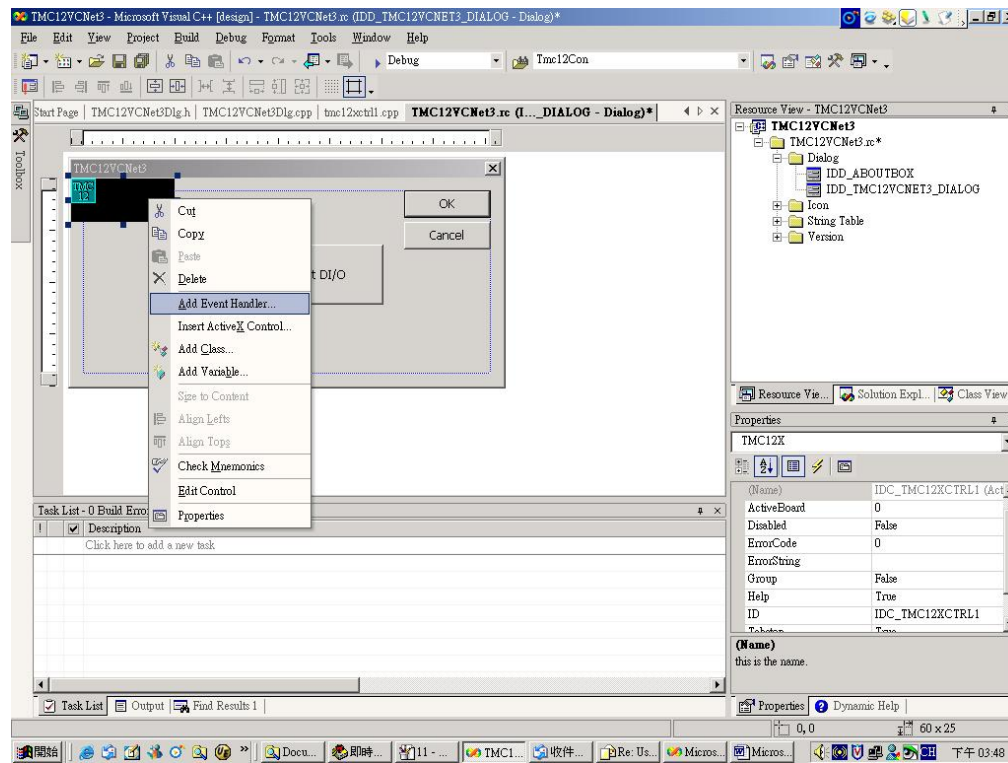
7. Check “**Control variable**”, select the “**IDC_TMC12XCTRL1**” Control ID, enter a **variable name** for this control object, and then click “**Finish**”.



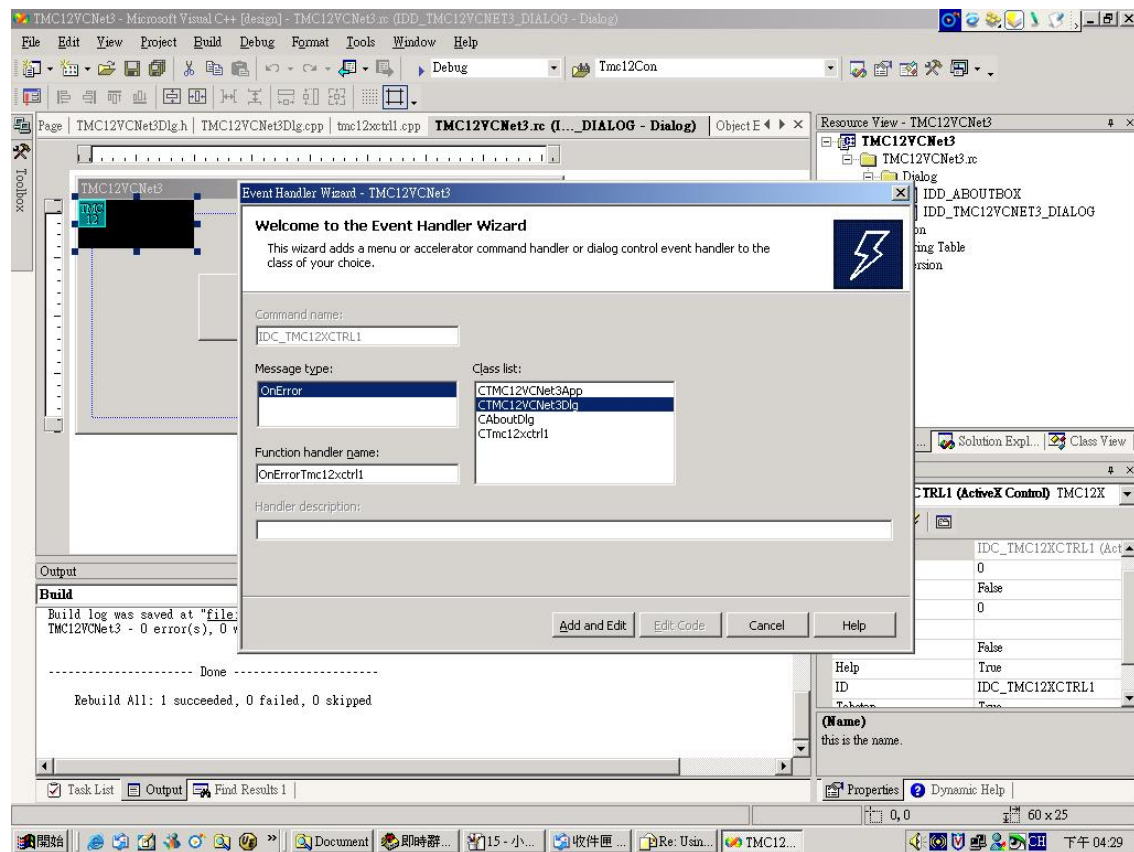
8. You can look **CTmc12xctrl1** contained many members in Class View



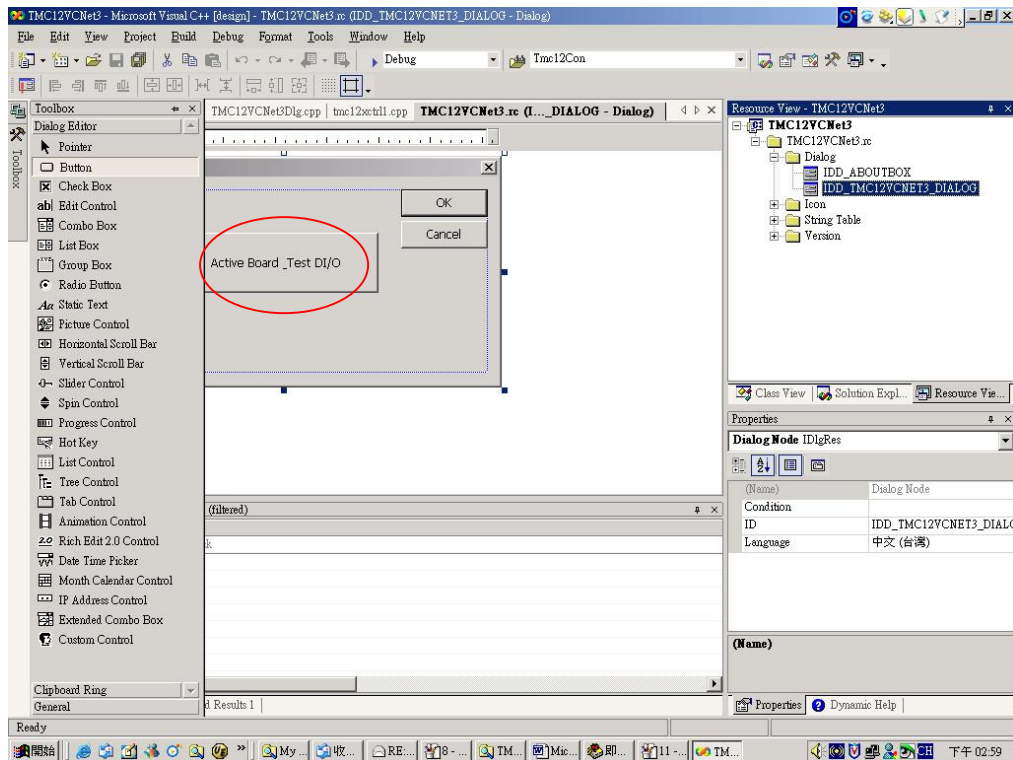
9. Move mouse to TMC12 ActiveX control and mouse right click, select “Add Event Handle”



10. Select CTMC12VCNet3Dlg then click “Add and Edit”



11. Insert **Button1** on the dialog.



12. Insert code in the **OnBnClickedButton1** function.

Example code:

```
short TotalBoard=0;

short J;

TotalBoard=TMC12Con.DriverInit() ;

if (TotalBoard==0) return;

TMC12Con.SetActiveBoard(0) ;

TMC12Con.DigitalOut(0x0f);

J=TMC12Con.DigitalIn();

if (J!=0x0f)

{

    MessageBox("Output Error",NULL,MB_OK);

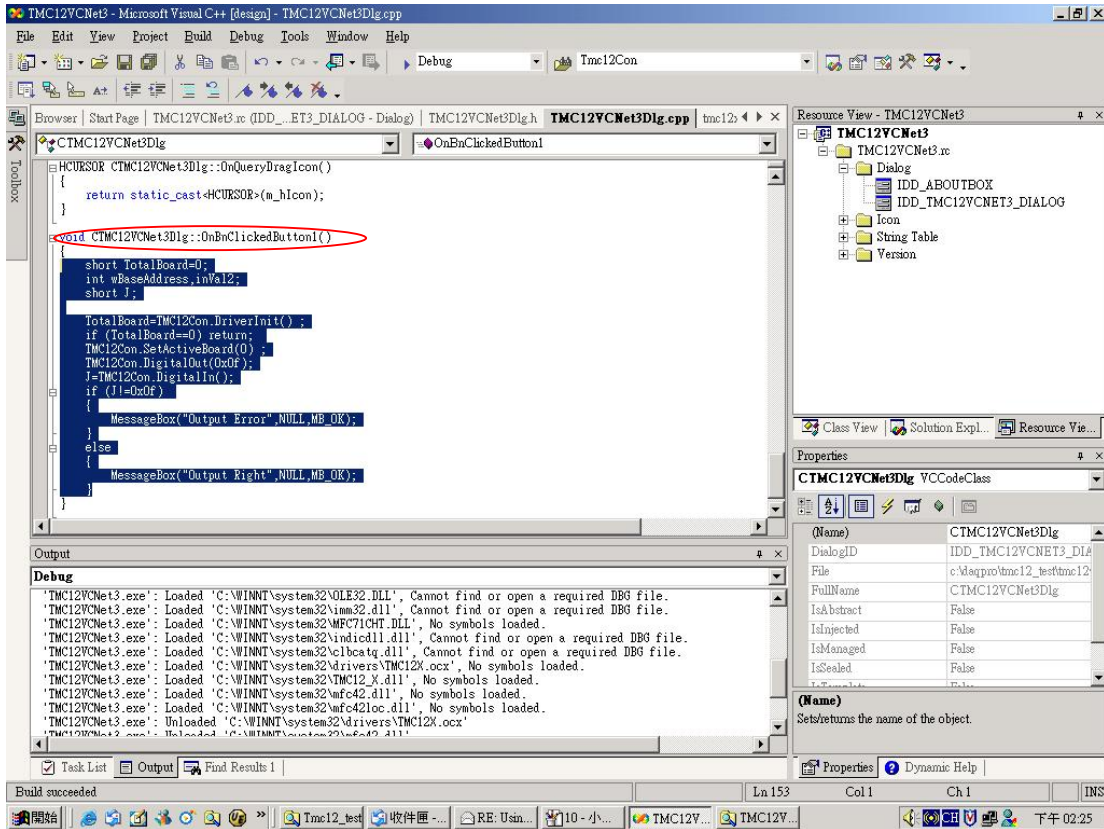
}

else

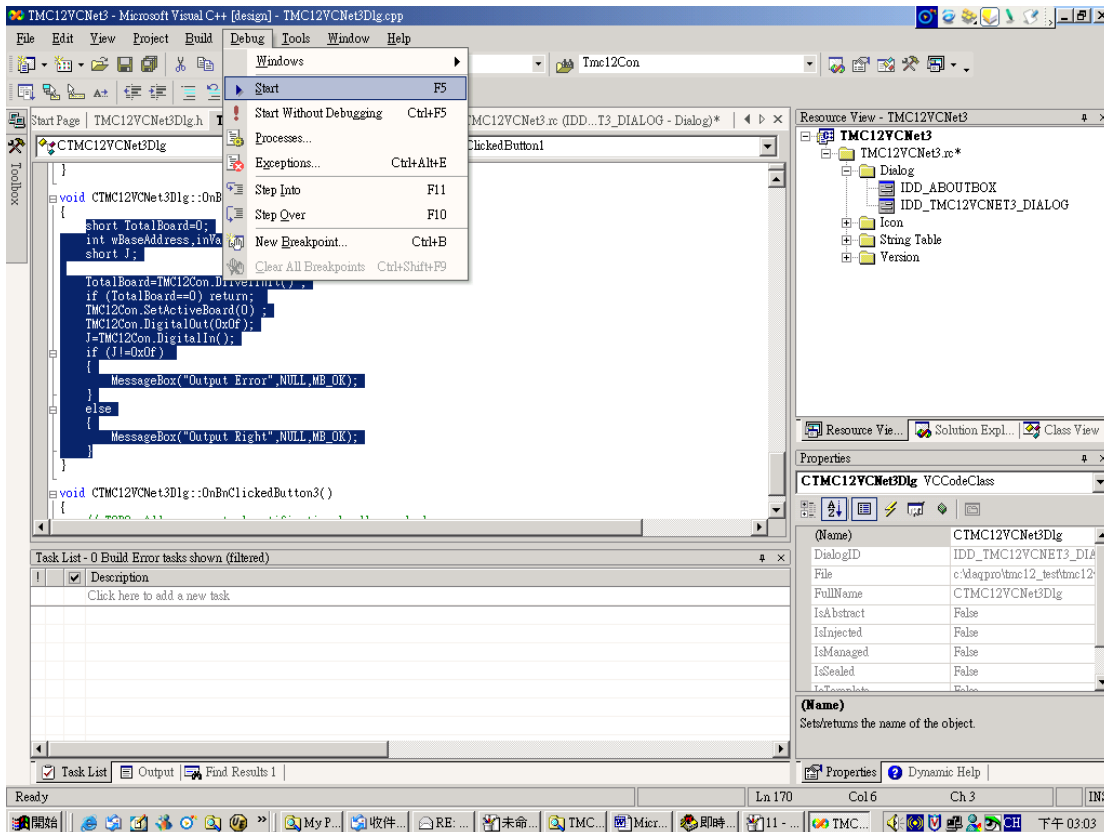
{

    MessageBox("Output Right",NULL,MB_OK);

}
```



13. Click the “**Debug / Start**” menu item.



14. Click “Yes”.

