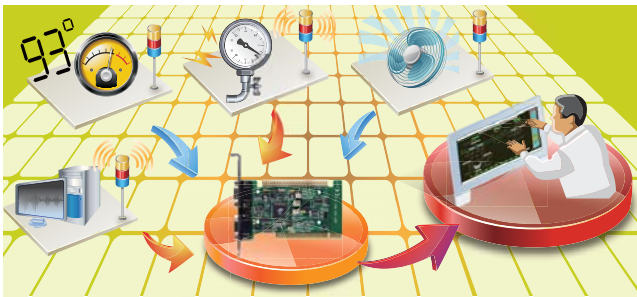




WDT-03
Intelligent Watchdog Timer Board

Introduction

It's a fact that the PC hardware and software may fail. To prevent the failure, many different solutions are proposed. However, none of these solutions offer a 100% assurance. Since it's hard to prevent the failure, to detect the failure becomes more and more important. The WDT-03 is used to detect the failure of the software and hardware. It can be used to reduce the risk of PC failure. The WDT-03 is useful even for those systems with built-in watchdog circuit.



The WDT-03 is equipped with two RS-232 ports, one is master port and another one is slave port. The master RS-232 port is designed to communicate with the local host-PC. The local host-PC can enable/disable/refresh/read-back the watchdog timer through the master RS-232 port. The slave RS-232 is used to send information to the remote Host-PC for monitoring. SO the remote HOST will get information immediately if the local host-PC has any software or hardware problem, even the power is failure



Pin Assignments

| Pin Assignment | Terminal No. | Pin Assignment | Terminal No. | Pin Assignment | | | |
|----------------|--------------|----------------|--------------|----------------|----|----|------|
| GND | 01 | 09 | NC | GND | 01 | 09 | DO_3 |
| NC | 02 | 08 | NC | DO_2 | 02 | 08 | DO_1 |
| RxD | 03 | 07 | NC | Power | 03 | 07 | DI_1 |
| TxD | 04 | 06 | NC | TxD | 04 | 06 | DI_2 |
| NC | 05 | | | DI_3 | 05 | | |

CN1 (RS-232) 9-pin Male D-sub Connector

CN2 (RS-232) 9-pin Male D-sub Connector

Features

- Support the +3.3/+5 V PCI bus
- 512 KB MRAM Onboard
- Non-volatile Random-access Memory Technology
- Retains Data when Power is Turned Off
- Unlimited Write Endurance
- 16 channels Digital Input
- 16 channels Digital Output



Software

Drivers

- 32/64-bit Windows 10/11
- Linux
- DOS

Specifications

| Software | |
|------------------------|---|
| Utility | Support Utility for DOS, 95/98/Me/2000/NT |
| Memory | |
| Type | EEPROM |
| Size | 63 bytes for user read/write, read/write cycles : 100,000 times |
| Watchdog | |
| Watchdog Timer | Software enable/disable watchdog timer; From 0.03 second to 1966.05 seconds |
| Bus Voltage Monitoring | 3.3V , 5V , 12V , -5V , -12V |
| Temperature Monitoring | 3 channels |
| Fan Speed Monitoring | 3 channels |
| COM Ports | |
| Ports | 1 x RS-232 (local CPU) 1 x RS232 (remote HOST(monitor the local CPU)) |
| Baud Rate | 2.4K, 4.8K, 9.6K, 19.2K, 38.4K, 57.6K, 115.2K |
| Data Format | N,8,1 |
| Protocol | DCON Protocol |
| PC Bus | |
| Type | ISA/PCI bus for PC and any System with RS-232 interface |
| Power | |
| Consumption | 2 W |
| Mechanical | |
| Dimensions (mm) | 140 mm x 70 mm |
| Environmental | |
| Operating Temperature | 0 ~ +60°C |
| Storage Temperature | -20 ~ +75°C |

Ordering Information

| | |
|---------------|---|
| WDT-03 | Intelligent Watchdog Timer Card (RoHS) Includes one CA-0205 (2-pin Black and Red Cable, 0.5 m) and one CA-0910F (9-pin Female-Female D-sub Cable, 1.0 m) |
|---------------|---|