

Classification	System and Application FAQ on WinCE PAC				No.	4-01-01	
Author	Tunglu-Yu	Version	1.0.0	Date	2018/04/27	Page	1/7

Q: How to update OS image by CAB file?

Applies to:

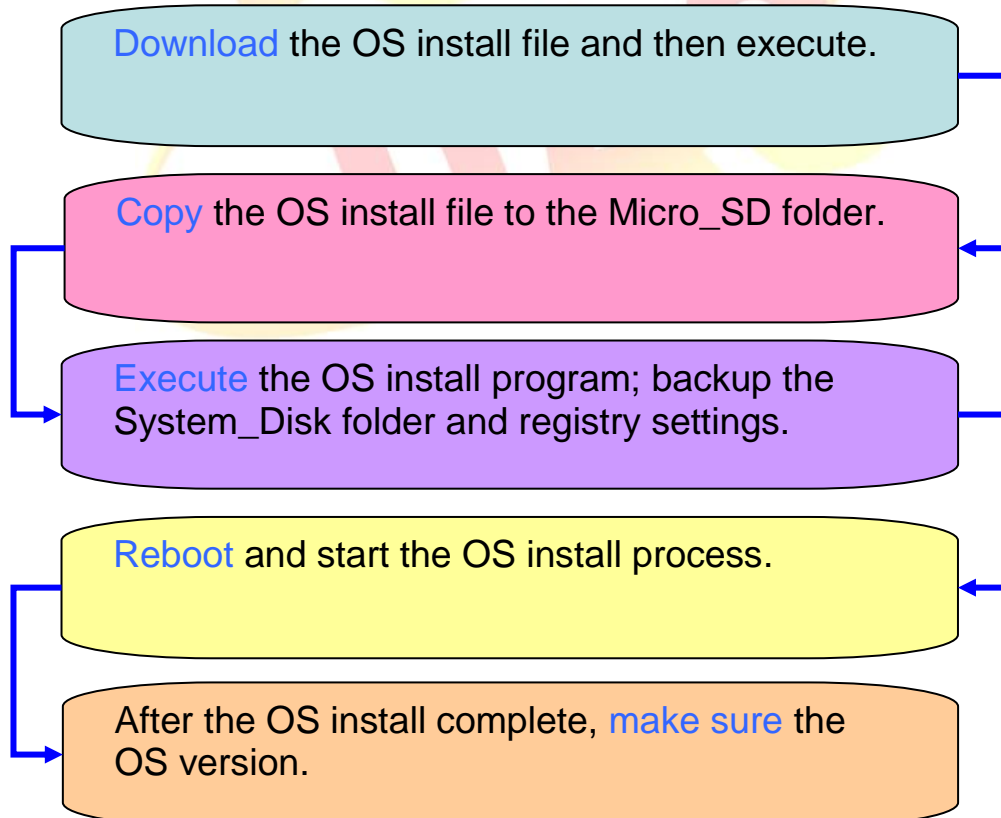
Platform	OS Version	PAC Utility Version
WinPAC	All Versions	All Versions
ViewPAC	All Versions	All Versions

Before updates OS, Please do below acts.

1. Preparation of below devices.

- Monitor/VGA line
- USB Hub
- USB Mouse
- USB Keyboard
- Micro_SD

The process of OS Update.



To update OS image by CAB file, please perform the following steps:

Classification	System and Application FAQ on WinCE PAC				No.	4-01-01	
Author	Tunglu-Yu	Version	1.0.0	Date	2018/04/27	Page	2/7

PC side

Step 1: Get the later installation package file from the follow URL.

Copy this file to System_Disk or MicroSD of the WinPAC.

http://ftp.icpdas.com/pub/cd/winpac_am335x/wp-5231/os_image/update_from_file/ (***Note1**)

Note1: Other platform OS install files locate at:

WP-8x2x: http://ftp.icpdas.com/pub/cd/winpac_am335x/wp-8x2x/os_image/wp-8x2x-ce7/update_from_file/

WP-9000: http://ftp.icpdas.com/pub/cd/winpac_am335x/wp-9000/os_image/wp-9x21-ce7/update_from_file/

VP-1231 : http://ftp.icpdas.com/pub/cd/winpac_am335x/vp-x231/os_image/vp-123x/update_from_file/

VP-x231 : http://ftp.icpdas.com/pub/cd/winpac_am335x/vp-x231/os_image/vp-423x/update_from_file/

ftp.icpdas.com - /pub/cd/winpac_am335x/wp-5231/os_image/update_from_file/

[\[To Parent Directory\]](#)

5/10/2017 10:27 AM 79869212 [wp523x_20170320_ver.1.0.1.5_ml_256mb.cab](#)

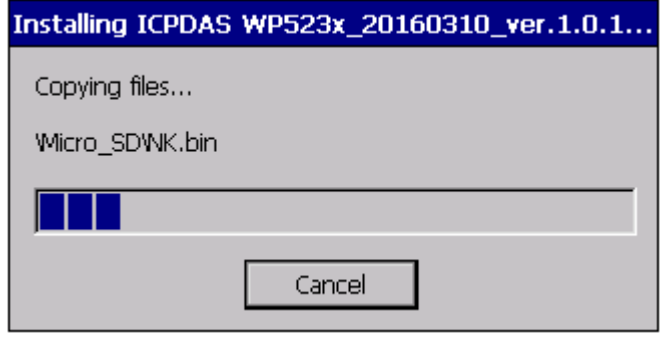
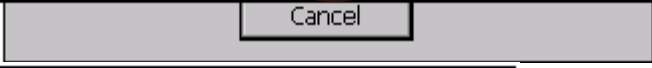
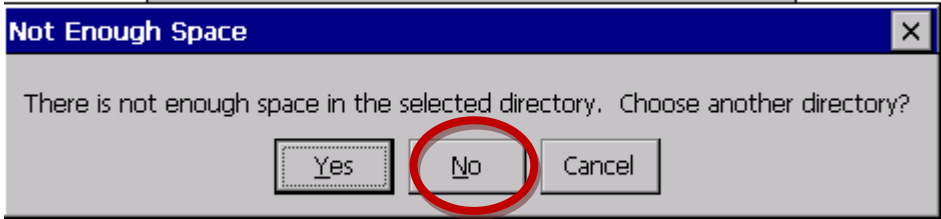
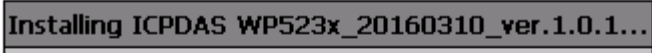
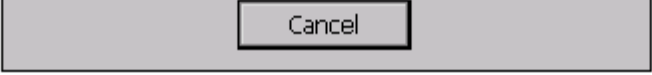
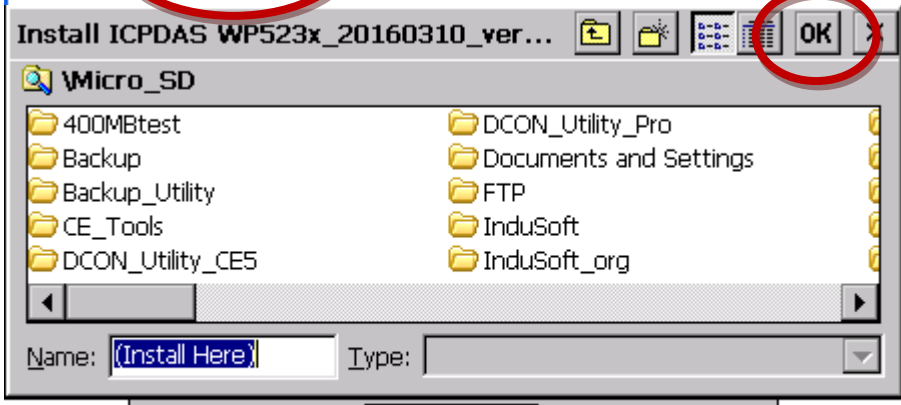
5/10/2017 10:29 AM 79869208 [wp523x_20170320_ver.1.0.1.5_ml_512mb.cab](#)



Classification	System and Application FAQ on WinCE PAC				No.	4-01-01	
Author	Tunglu-Yu	Version	1.0.0	Date	2018/04/27	Page	3/7

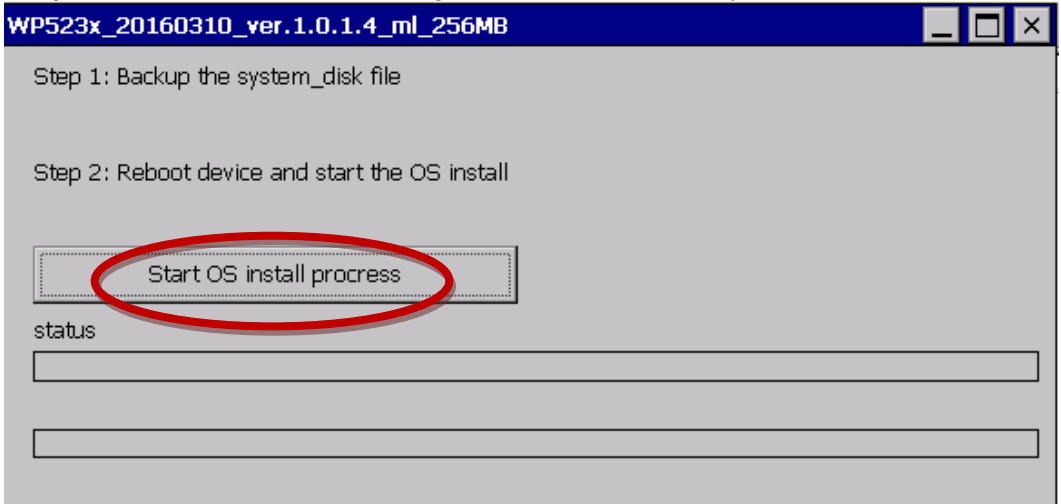
PAC side

Step 2: Execute the installation package file and then click "OK" button.

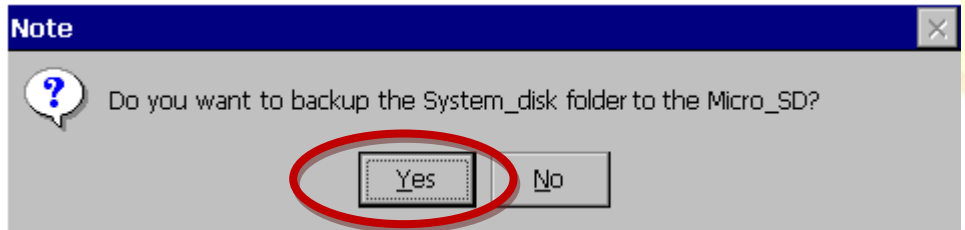


Classification	System and Application FAQ on WinCE PAC				No.	4-01-01	
Author	Tunglu-Yu	Version	1.0.0	Date	2018/04/27	Page	4/7

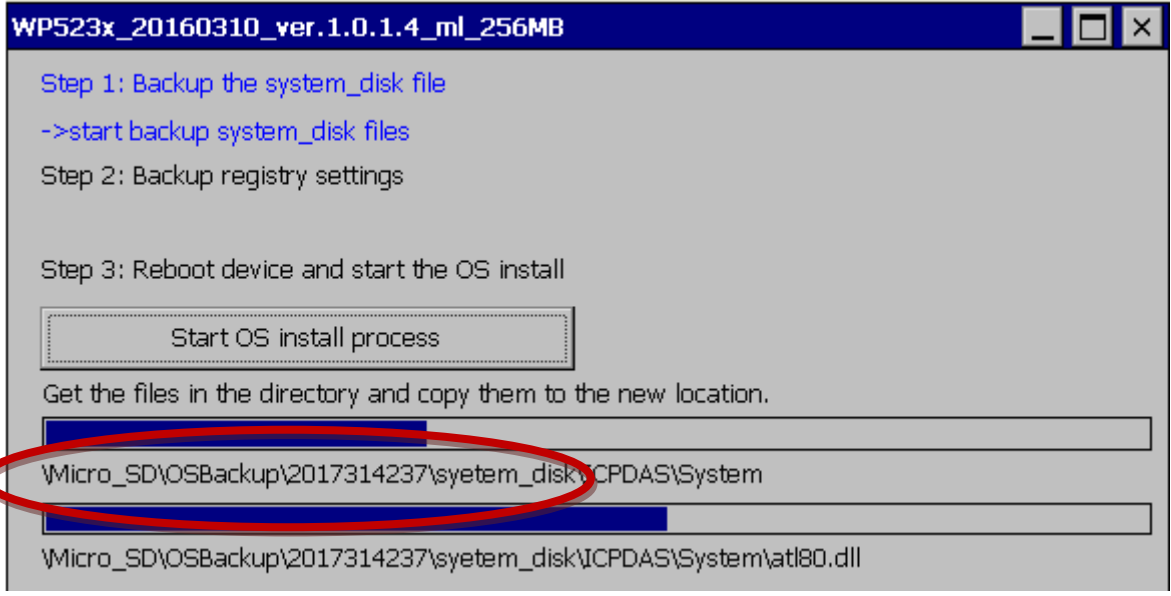
Step 3: Click "Start OS install process" to start the process.



Backup the system_disk folder or not.



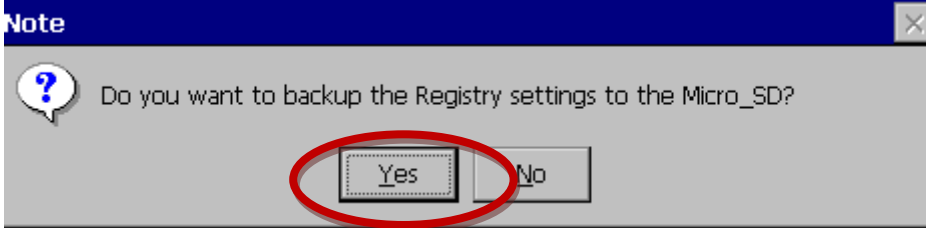
System_disk backup files locate at: \Micro_SD\OSBackup\yyyyMMddhhmm\system_disk



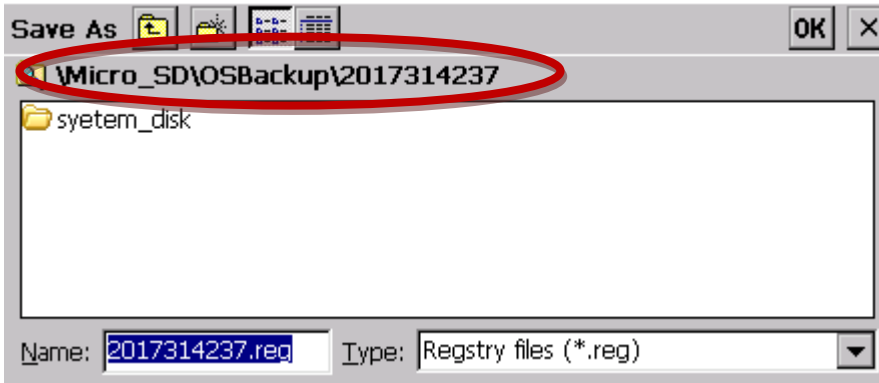
Classification	System and Application FAQ on WinCE PAC				No.	4-01-01	
Author	Tunglu-Yu	Version	1.0.0	Date	2018/04/27	Page	5/7

Backup the registry settings file or not.

Note: The registry settings file can restore the system settings of WinPAC.

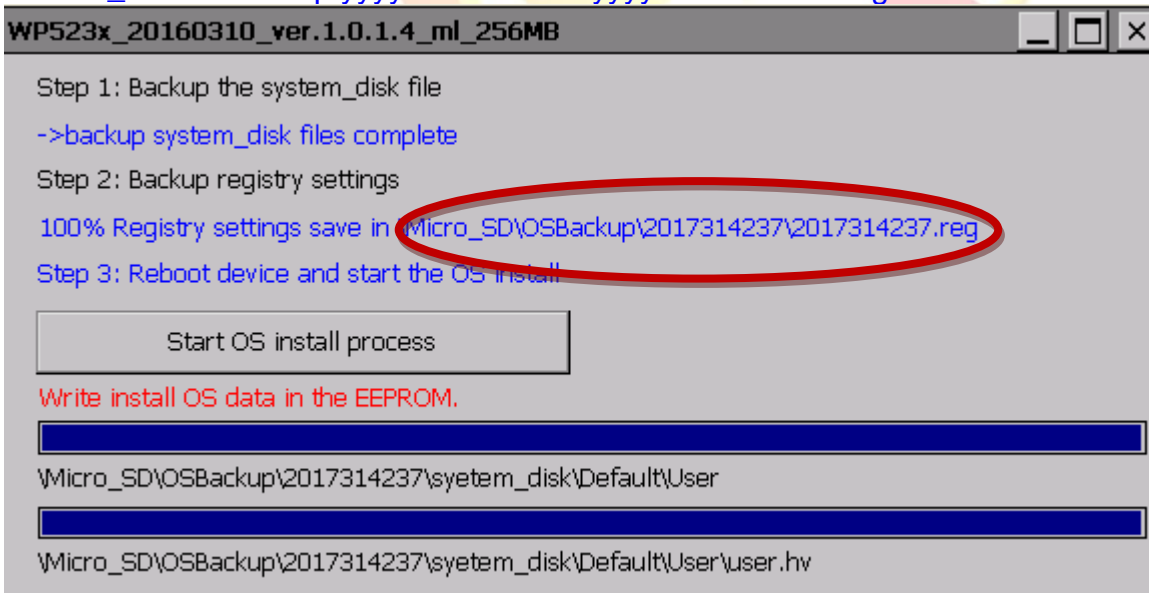


Select the Registry settings backup file save place.

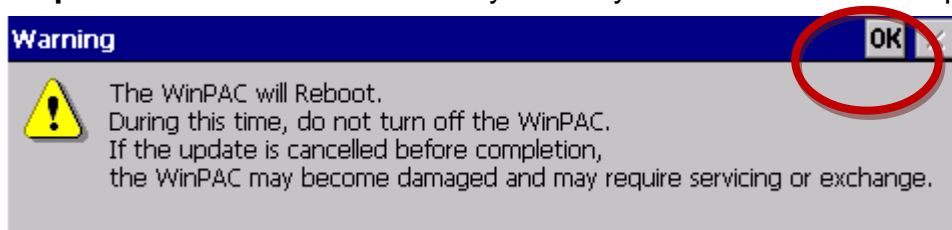


Registry settings backup file locate at :

[\Micro_SD\OSBackup\yyyyMMddhmm\yyyyMMddhmm.reg](#)

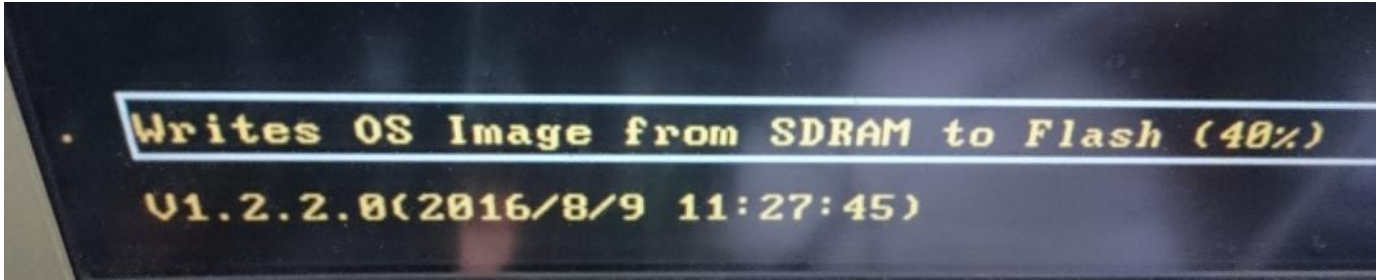


Step 4: Click "OK" to make sure you ready to start the OS install process after reboot.



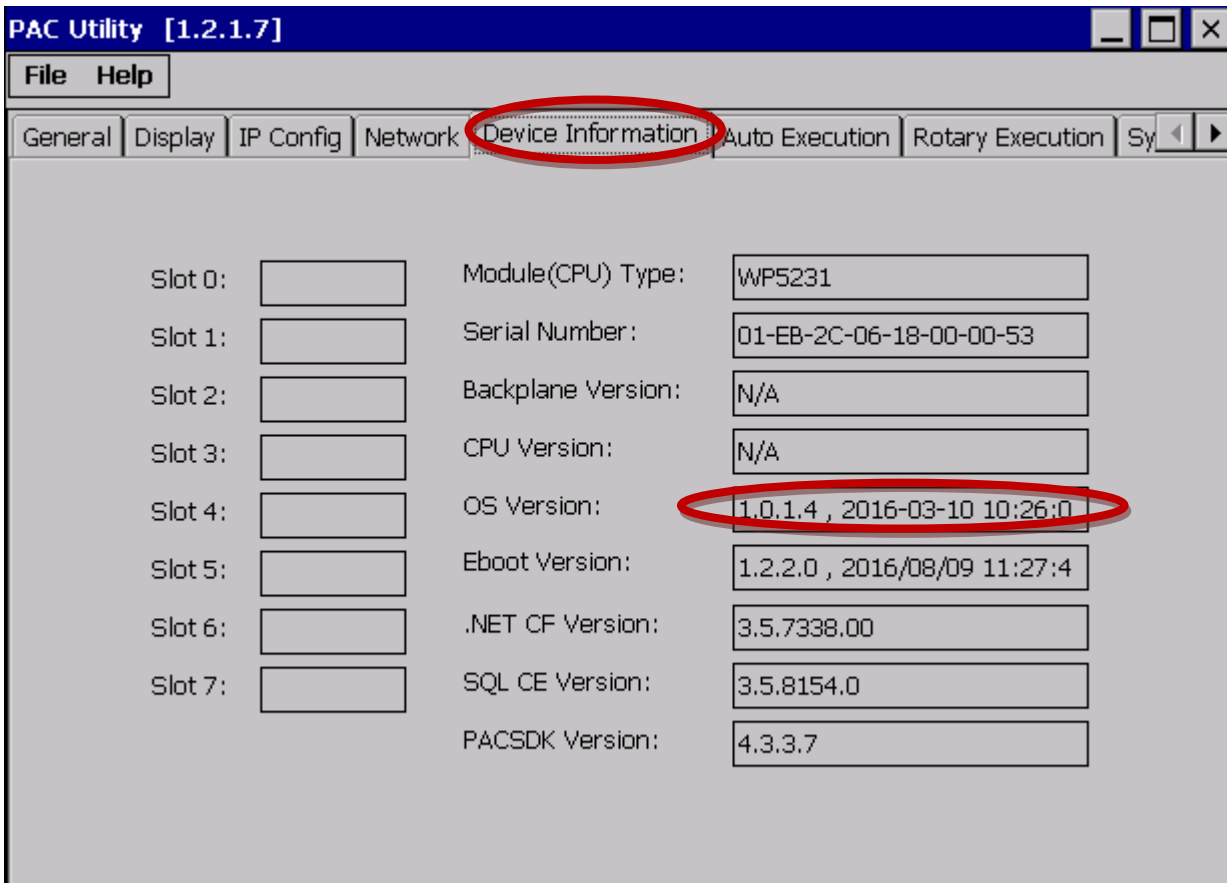
Classification	System and Application FAQ on WinCE PAC				No.	4-01-01	
Author	Tunglu-Yu	Version	1.0.0	Date	2018/04/27	Page	6/7

Step 5: OS will start install process after reboot.



Step 6: Check the WinPAC OS version

Start the PAC Utility on the desktop, and then select the “System Information” tab to check the current OS version.

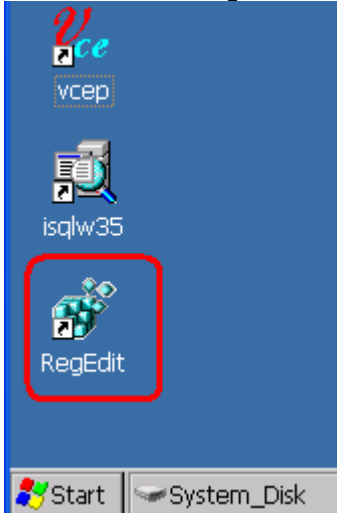


Classification	System and Application FAQ on WinCE PAC				No.	4-01-01	
Author	Tunglu-Yu	Version	1.0.0	Date	2018/04/27	Page	7/7

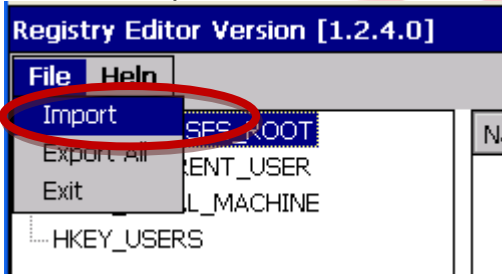
Step 7: Restore PAC utility settings.

Note: If you reinstall the OS, that do not need restore the registry setting

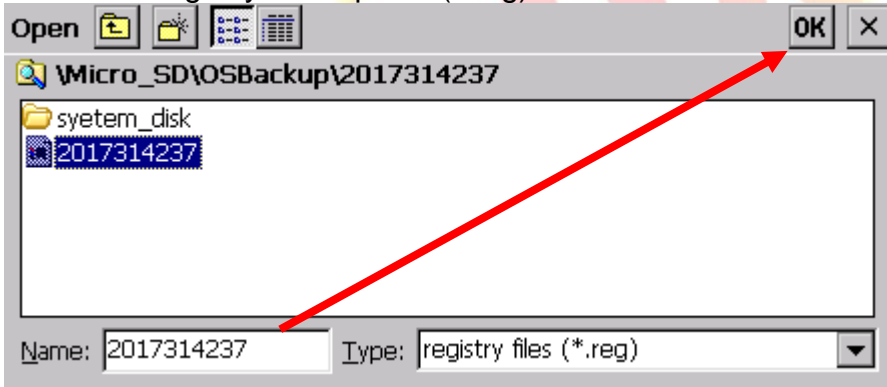
Execute the "RegEdit.exe" on the desktop, and then restore the registry.



Click the Import menu.



Select the registry backup file. (*.reg)



Please reboot the device after the registry settings restore complete.