

Classification	System and Application FAQ on WinCE PAC				No.	4-001-03	
Author	Tunglu-Yu	Version	1.0.0	Date	2018/04/27	Page	1/5

How to update OS image and Eboot by Micro_SD_card_english

Applies to:

<i>Platform</i>	<i>OS Version</i>	<i>PAC Utility Version</i>
<i>WinPAC</i>	<i>All Versions</i>	<i>All Versions</i>
<i>ViewPAC</i>	<i>All Versions</i>	<i>All Versions</i>

Before updates OS, Please do below acts.

1. Preparation of below devices.

- Monitor/VGA line
- USB Hub
- USB Mouse
- USB Keyboard
- Micro_SD

2. The registry of OS will return to the default value after update the OS image, please remember all settings in the WinPAC. (e.g. PWM 、 Desktop 、 Time Zone 、 screen resolution 、 SNTP 、 Ethernet settings 、 Auto execute 、 UI language.....)

3. Backup the System_ disk files in the Micro_SD folder.

Warnings



The System_ disk will be formatted after update the OS image, please remember backup the System_ disk files in the Micro_SD folder.

Classification	System and Application FAQ on WinCE PAC				No.	4-001-03	
Author	Tunglu-Yu	Version	1.0.0	Date	2018/04/27	Page	2/5

Update WinPAC OS

To update OS image and Eboot by Micro_SD card, please perform the following steps:

Step 1: Download the OS install file to the PC side.

OS Image:

http://ftp.icpdas.com/pub/cd/WinPAC_AM335x/Wp-5231/OS_Image/ (***Note1**)

Note1: The OS image files of other platform:

IWS-x231: http://ftp.icpdas.com/pub/cd/WinPAC_AM335x/IWS-x231/OS_Image/

VP-x231: http://ftp.icpdas.com/pub/cd/WinPAC_AM335x/VP-x231/OS_Image/

There are six files in the OS installation file (*.Zip):

MLO
 XLDRSD.nb0
 XLDRNAND.nb0
 EBOOTND.nb0
 EBOOTSD.nb0
 NK.bin

EBOOTND.nb0	256 KB
EBOOTSD.nb0	256 KB
MLO	84 KB
NK.bin	68,408 KB
XLDRNAND.nb0	128 KB
XLDRSD.nb0	84 KB


Unzip the Zip file to the appropriate location. e.g. C:\AM335x_O....

Step 2: Copy the six files to the \Micro_SD folder on the PC side.

MLO
 XLDRSD.nb0
 XLDRNAND.nb0
 EBOOTND.nb0
 EBOOTSD.nb0
 NK.bin

Classification	System and Application FAQ on WinCE PAC				No.	4-001-03	
Author	Tunglu-Yu	Version	1.0.0	Date	2018/04/27	Page	3/5

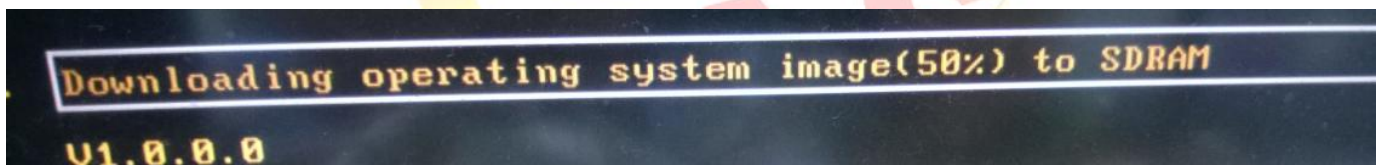
Step 3: Insert the Micro_SD card to the WinPAC, and then turn the rotary switch to the “5” position. Reboot the WinPAC.

	Rotary switch position	Modes of operation
	0	Normal
	1	Safe
	2	Debug
	3	OS update (By Eshell)
	4	Reserved
	5	OS update (By Micro_SD)
	6	Reserved
	7~9	Normal (User define)

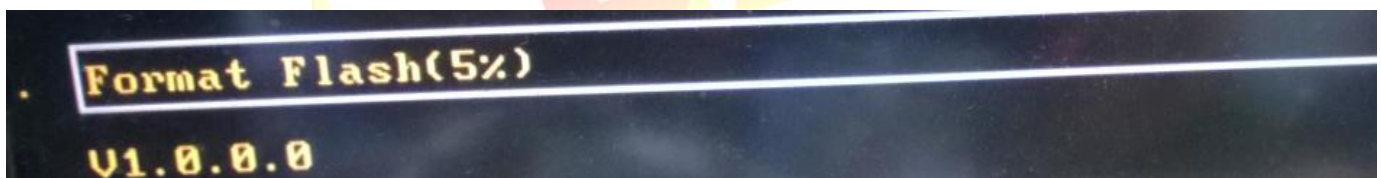
Step 4: Wait 5 minutes for WinPAC OS and Eboot install progress complete.

WinPAC side will show the installation progress.

1. The WinPAC will download the NK.bin file from Micro_SD card to the SDRAM.



2. Erase and Format the OS Flash.



3. Write the OS image (NK.bin) from SDRAM to OS flash.



4. Update complete.

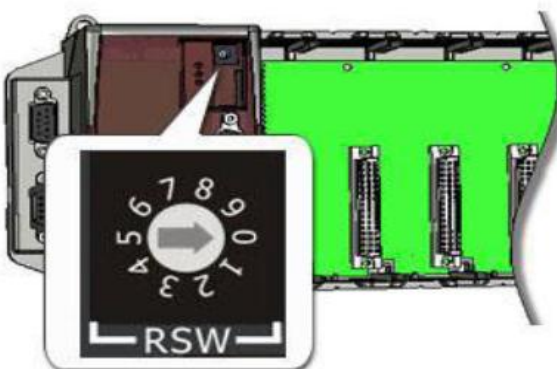


Classification	System and Application FAQ on WinCE PAC				No.	4-001-03	
Author	Tunglu-Yu	Version	1.0.0	Date	2018/04/27	Page	4/5

The desktop will be displayed after OS update complete.

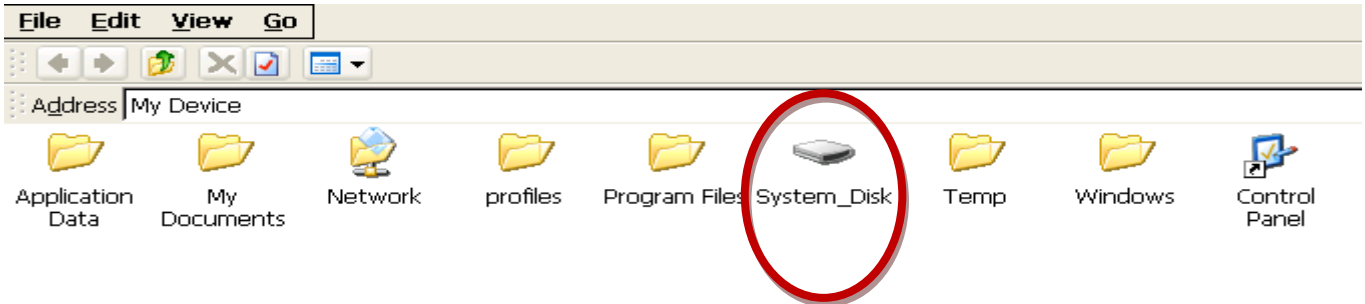


Step 5: Turn the rotary switch to the "0".



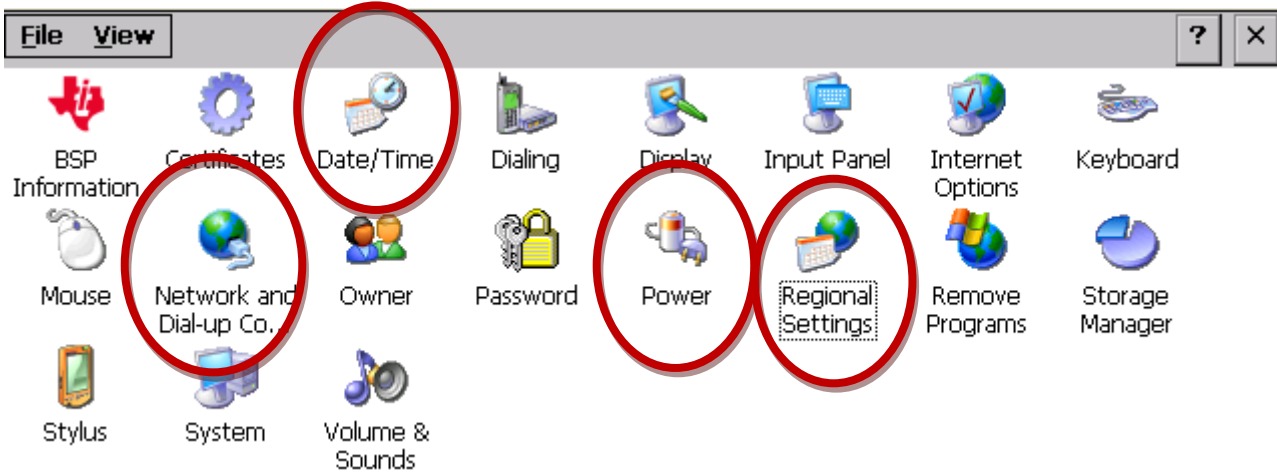
Classification	System and Application FAQ on WinCE PAC				No.	4-001-03	
Author	Tunglu-Yu	Version	1.0.0	Date	2018/04/27	Page	5/5

Step 6: Restore the System_disk files form the Micro_SD folder.



Step 7: Restore your WinPAC settings.

(e.g. PWM 、 Desktop 、 Time Zone 、 screen resolution 、 SNTP 、 Ethernet settings 、 Auto execute 、 UI language.....)



Step 8: Check the WinPAC OS version.

Start the PAC Utility on the desktop, and then select the “Device Information” tab to check the current OS version.

