

Classification	WinPAC Troubleshooting FAQ				No.	7-002-00	
Author	Tunglu-Yu	Version	1.0.1	Date	2018/04/23	Page	1/3

How to solve monitor display problems

Applies to:

<i>Platform</i>	<i>OS Version</i>	<i>PAC Utility Version</i>
<i>WinPAC</i>	<i>All Versions</i>	<i>All Versions</i>
<i>ViewPAC</i>	<i>All Versions</i>	<i>All Versions</i>

The WinPAC default display settings do not support the monitor types, so you may encounter any or all of the problems described below:

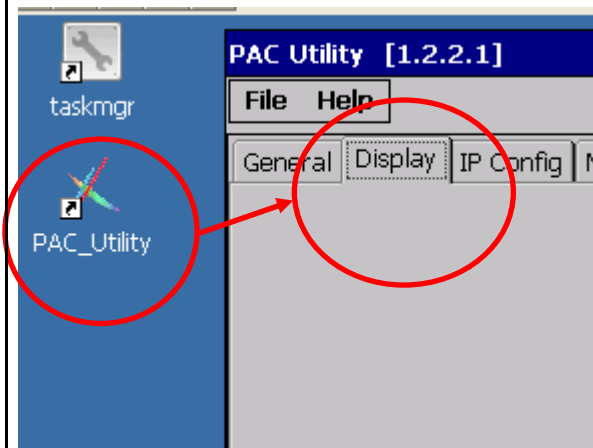
1. Moire
2. No display
3. The screen cannot be displayed properly. (too bigger or too smaller)

Should you encounter any of these issues, perform the following procedure to resolve the problem.

Step 1: Press the auto adjust button on the monitor.

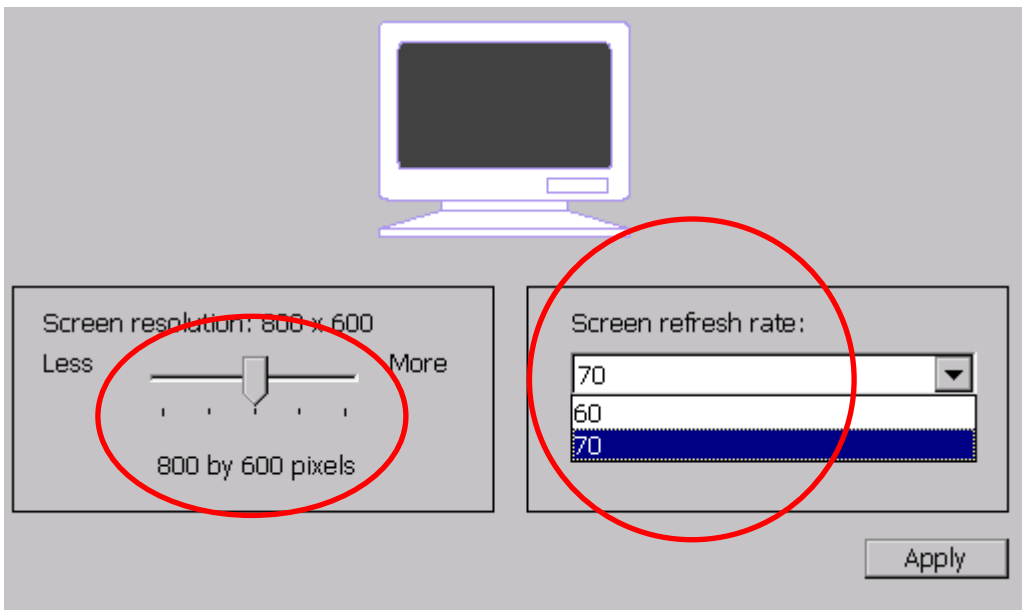
Step 2: If pressing the auto adjust button does not solve the problem, change the display frequency using the PAC Utility.

Step3: Execute the PAC_utility from the desktop, them click the system settings tab.

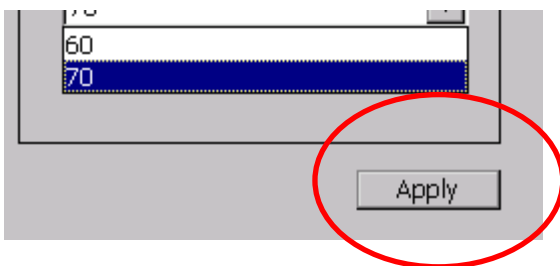


Classification	WinPAC Troubleshooting FAQ				No.	7-002-00	
Author	Tunglu-Yu	Version	1.0.1	Date	2018/04/23	Page	2/3

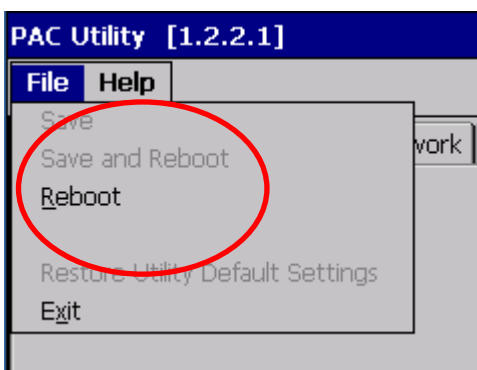
Step 4: From the frequency drop-down combo box, select the required frequency.



Step 5: Click the settings button to save your changes.



Step 6: Click "Reboot" from the "File" menu.



Classification	WinPAC Troubleshooting FAQ				No.	7-002-00	
Author	Tunglu-Yu	Version	1.0.1	Date	2018/04/23	Page	3/3

Step 7: If the new frequency settings still cause problems, repeat step 3 to try other frequencies until the display appears normal.

Note:

Some monitors may not support certain frequencies. Before attempting to adjust the frequency in an effort to solve display problems, it is recommended that you set the VCEP (Remote Desktop Connection) auto execute to remote control the WinPAC. For more details about how to use the VCEP, please refer to the document "w2-001_how_to_use_VCEP_to_remotely_control_WinCE_PAC_english.pdf".