

Classification	System and Application FAQ on WinCE PAC				No.	1-007-01	
Author	Eric_Shiu	Version	1.0.0	Date	2018/4/27	Page	1/8

## How to label serial ports on I-8112/I-8114/I-8142/I-8144 with COMx

Applies to:

Platform	OS version	PAC utility version
WP-9xxx	All versions	All versions
WP-8x2x	All versions	All versions
VP-x231	All versions	All versions

**N/A:** Not applicable to this platform and OS.

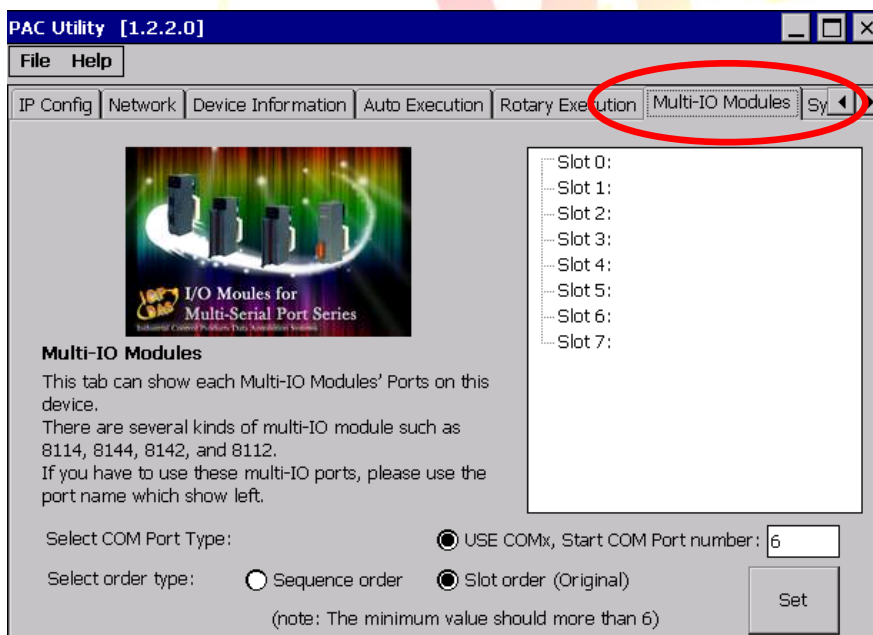
Serial communication modules are designed for use with intelligent devices such as bar code readers, serial printers, intelligent sensors, instrumentation equipment, computers, and almost any device providing the RS-232 or RS-422/485 serial communication.

### To set up a communication module

**Step 1:** Install the multi-serial port module driver.

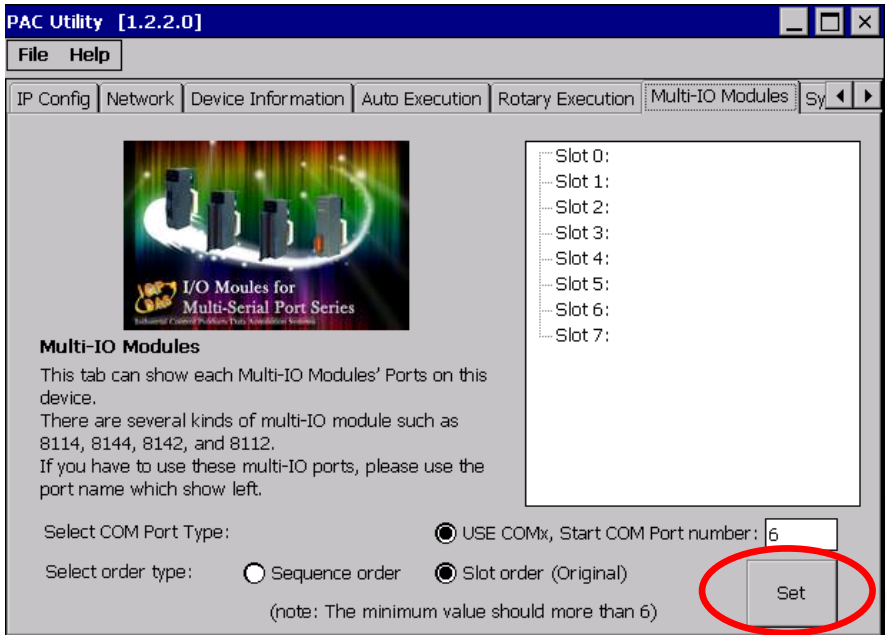
1.1. Insert the module into any slot

1.2. Start the PAC utility on the desktop, and then click the **“Multi-serial port wizard”** index page.

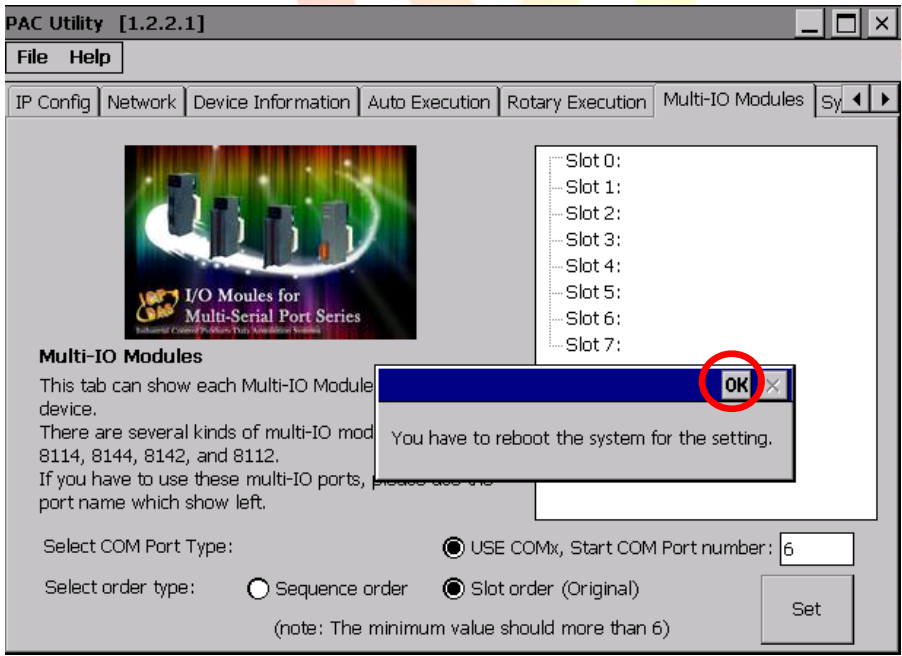


Classification	System and Application FAQ on WinCE PAC				No.	1-007-01	
Author	Eric_Shiu	Version	1.0.0	Date	2018/4/27	Page	2/8

1.5. Press “Set” .

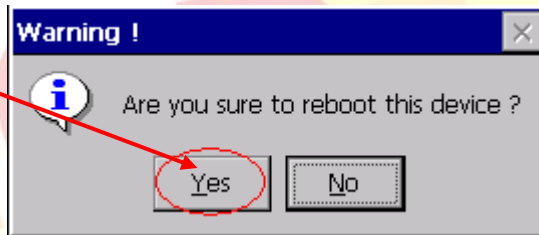
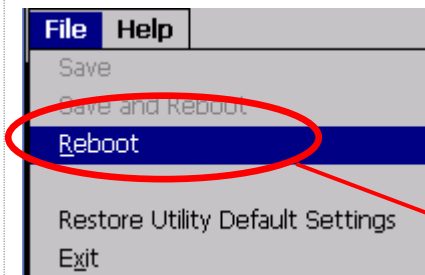
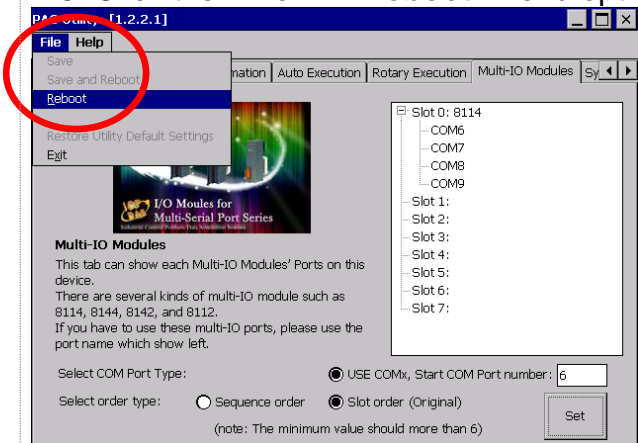


1.6. Press “OK” .

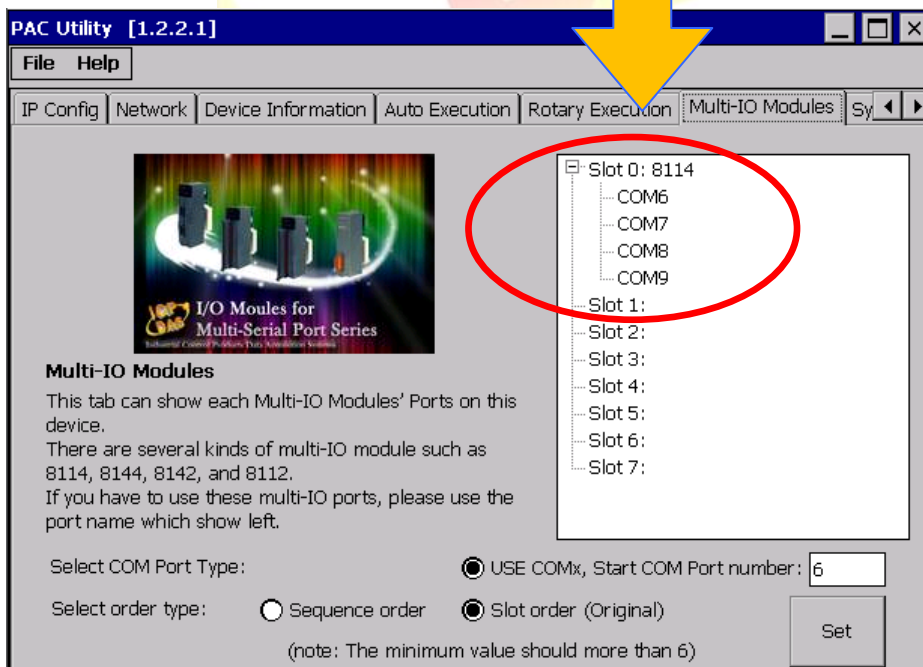


Classification	System and Application FAQ on WinCE PAC				No.	1-007-01	
Author	Eric_Shiu	Version	1.0.0	Date	2018/4/27	Page	3/8

1.6. Click the “File” → “Reboot” menu option.



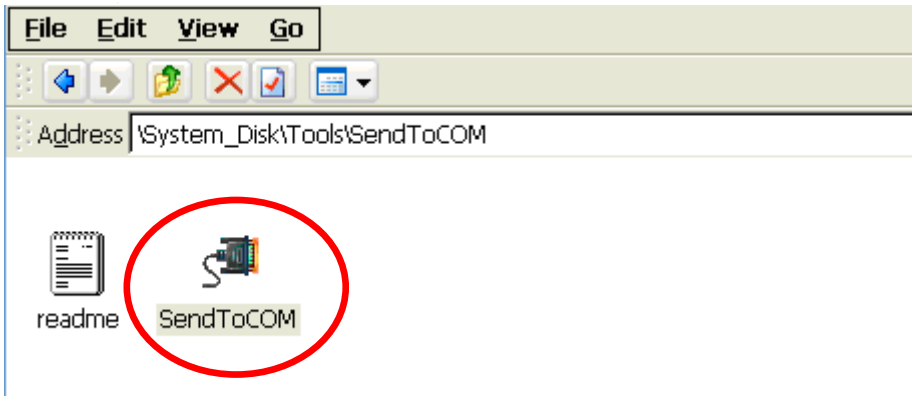
The driver is installed and enabled after rebooting.



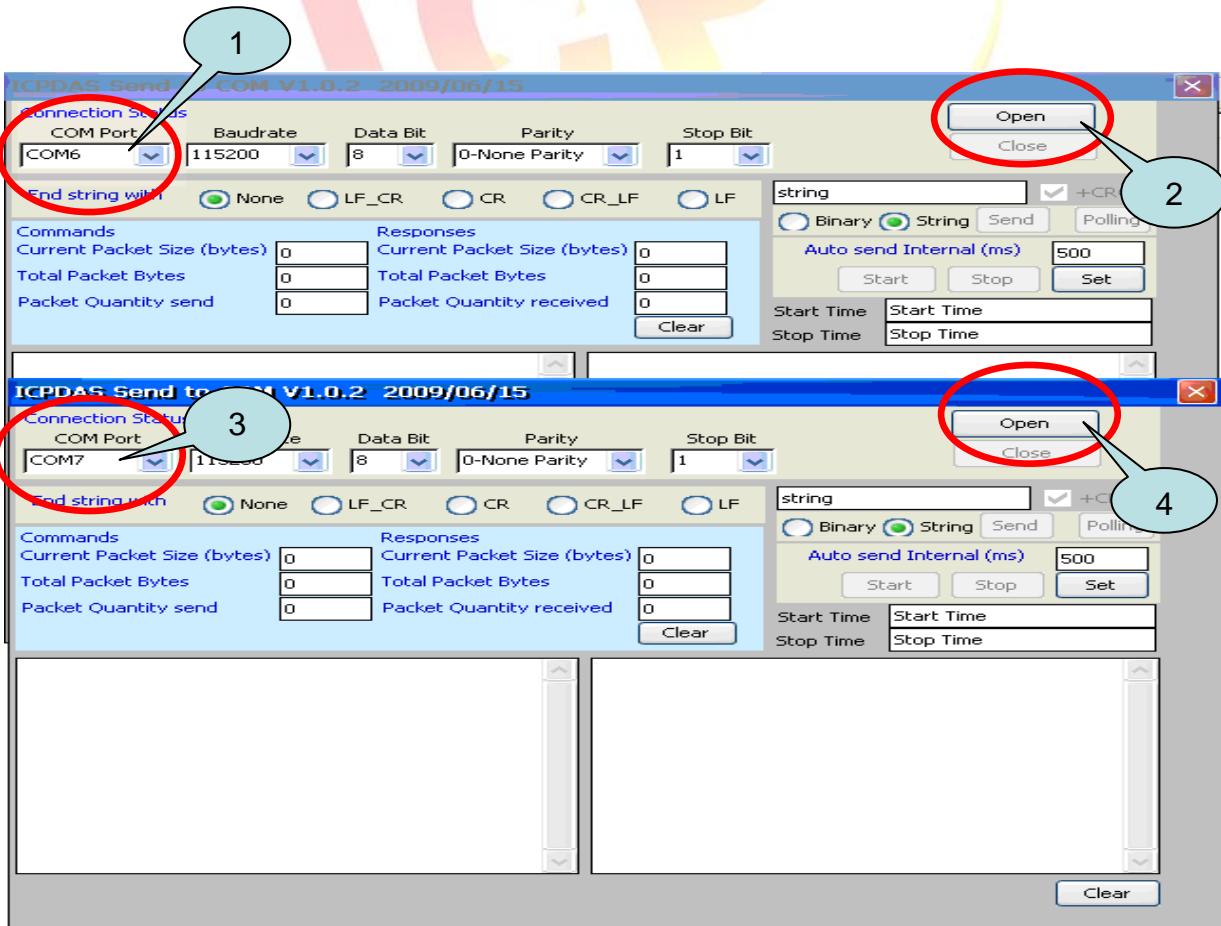
Classification	System and Application FAQ on WinCE PAC				No.	1-007-01	
Author	Eric_Shiu	Version	1.0.0	Date	2018/4/27	Page	4/8

**Step 2:** Test the multi-serial port module(s).

2.1. Connect the two ports of I-8142 and execute the **SendToCOM.exe** file located in “**System\_Disk\Tools\SendToCOM**”.

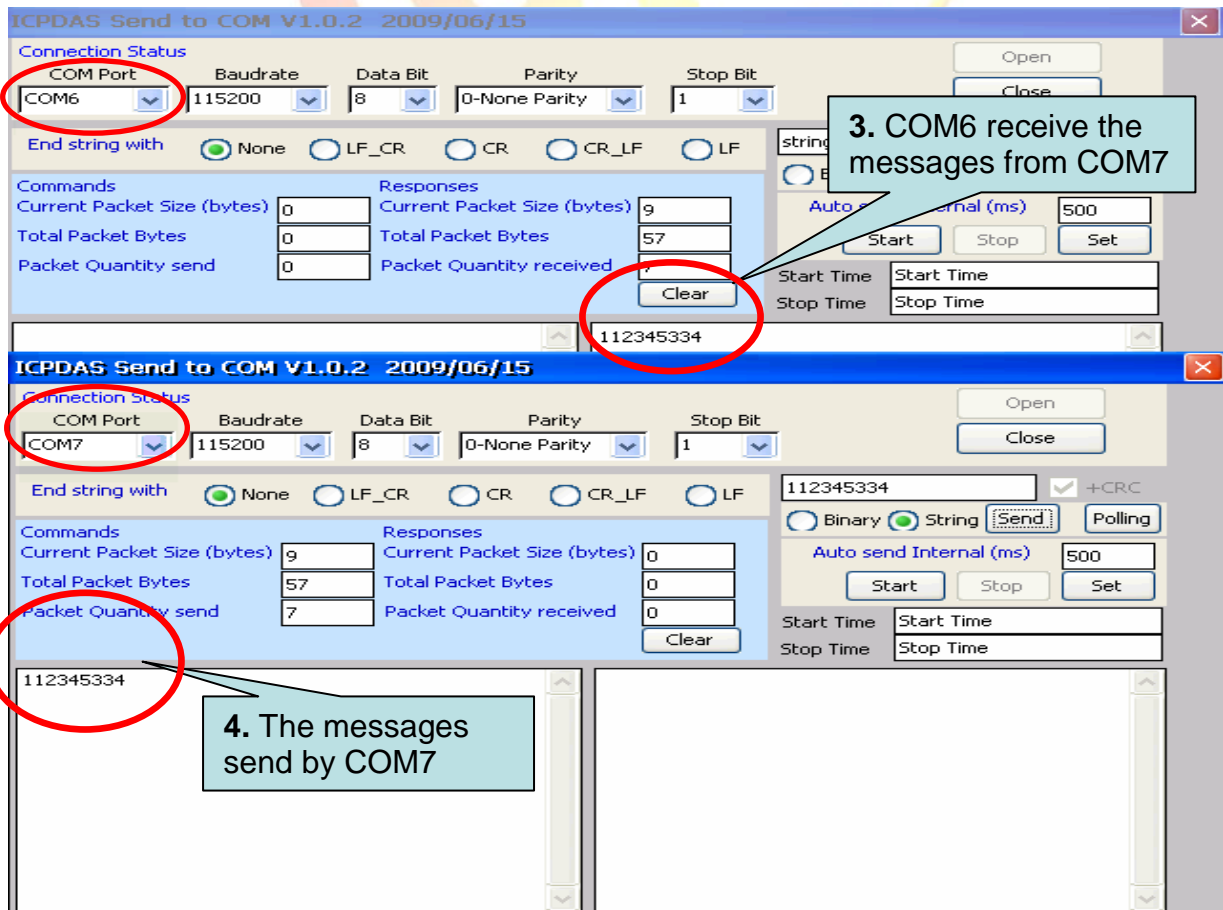
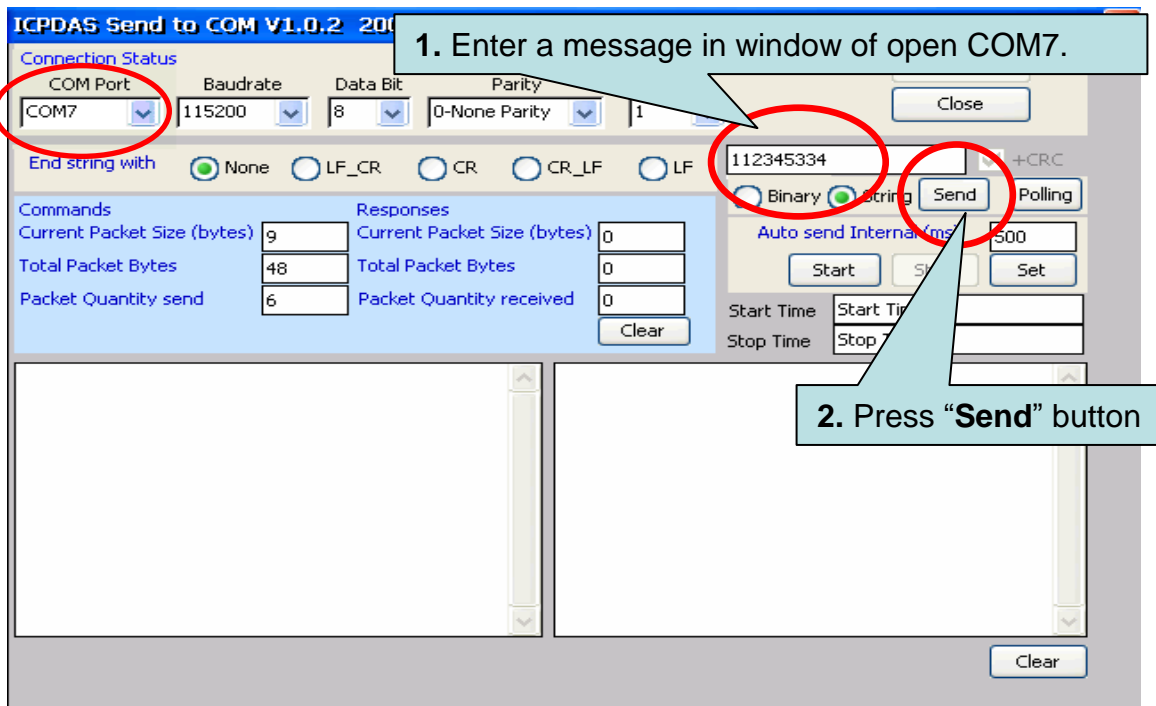


2.2. Execute the SendToCOM.exe files again, now two SendToCOM.exe are running; and then open COM Ports “**COM6**” and “**COM7**” (each corresponding to a real COM port).



Classification	System and Application FAQ on WinCE PAC				No.	1-007-01	
Author	Eric_Shiu	Version	1.0.0	Date	2018/4/27	Page	5/8

2.3. Use COM7 to send a message to COM6 and check the result.



Classification	System and Application FAQ on WinCE PAC				No.	1-007-01	
Author	Eric_Shiu	Version	1.0.0	Date	2018/4/27	Page	6/8

## How to get the name of COM Ports

### Overview

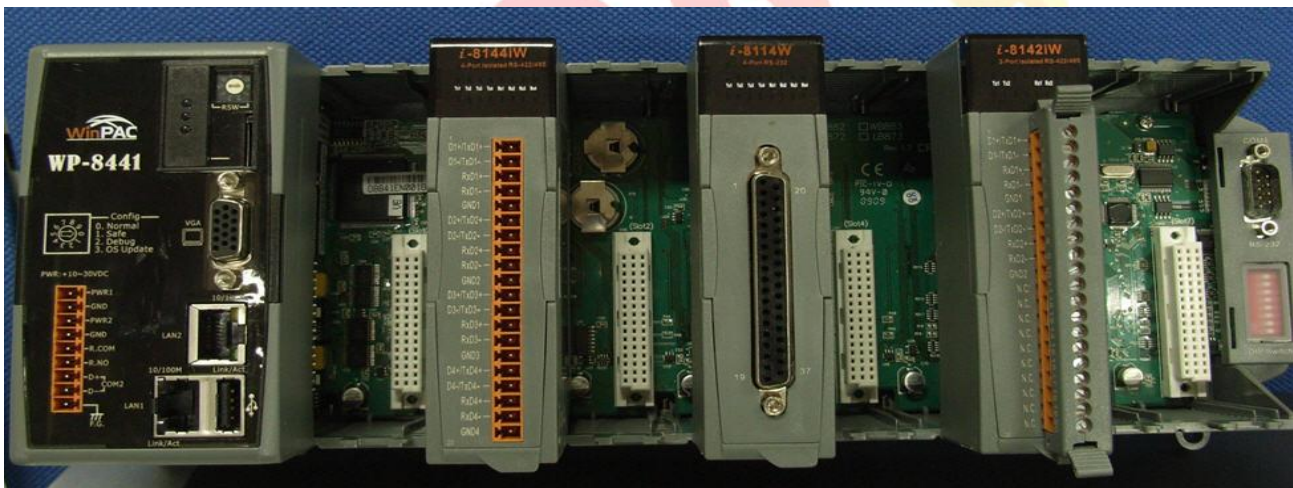
The maximum number of expanded COM port on communication modules supported is up to 16 (WP-8x2x). The 16 COM ports will be named in order of **COM6~COM21** since the driver installed.

To use the COM ports, you need assign the com port name as belows:

**VB.net:** Dim port As SerialPort = New SerialPort("COM6")

**C#:** System.IO.Ports.SerialPort port = new System.IO.Ports.SerialPort("COM6");

**EVC:** HANDLE hport=CreateFile(\_T("COM6:"),.....);

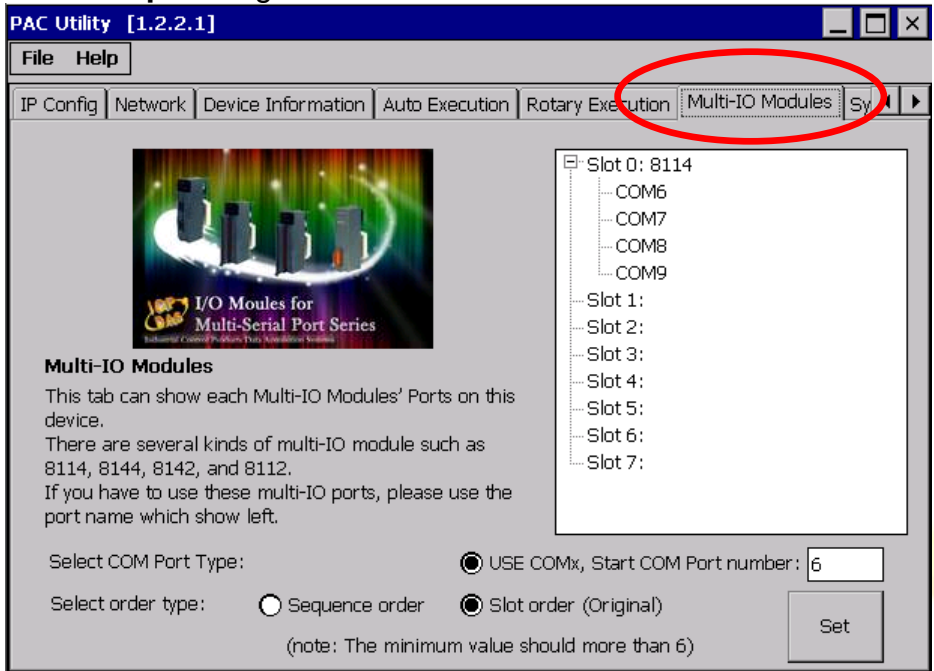


The following are the steps of getting the name of each COM Port:

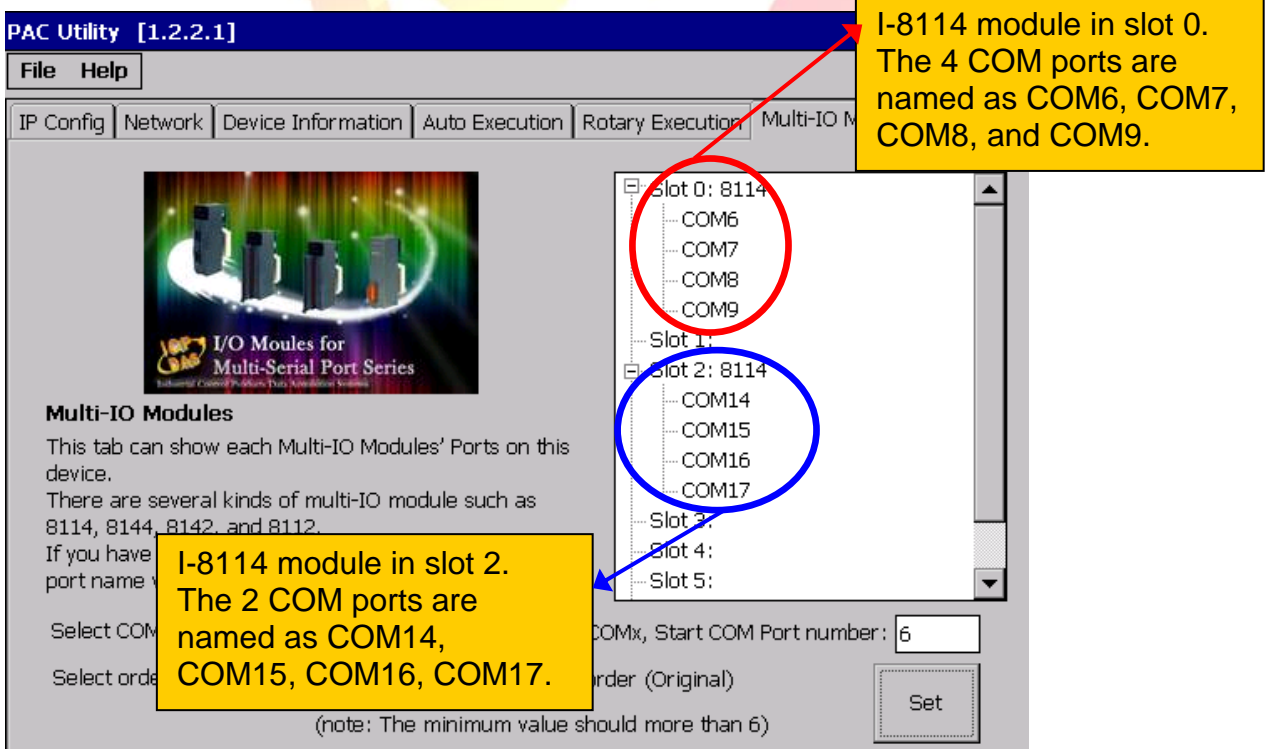


Classification	System and Application FAQ on WinCE PAC				No.	1-007-01	
Author	Eric_Shiu	Version	1.0.0	Date	2018/4/27	Page	7/8

**Step 1:** Start the PAC Utility on the desktop, and then click the “Multi-serial port” tag.



The COM ports are grouped in the slot that the module plugged.



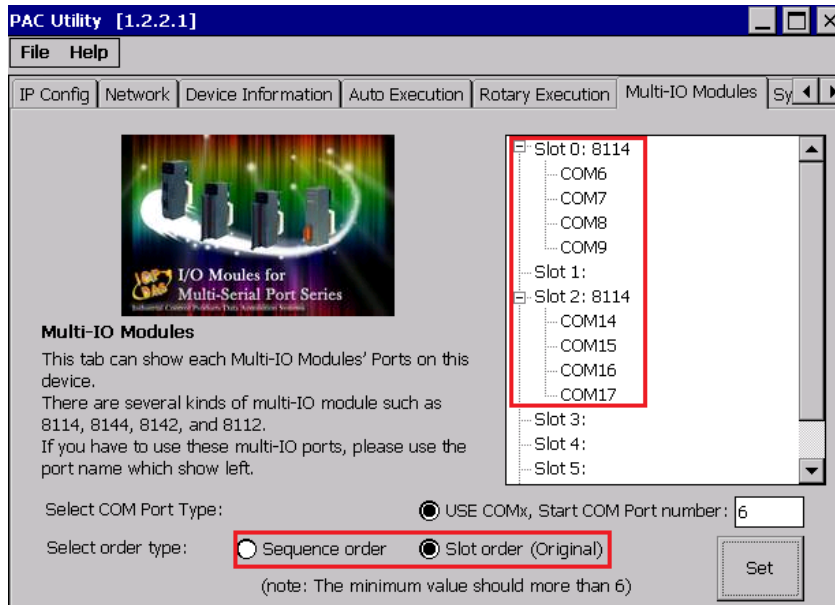
Classification	System and Application FAQ on WinCE PAC				No.	1-007-01	
Author	Eric_Shiu	Version	1.0.0	Date	2018/4/27	Page	8/8

Click the right option, COM Port will follow

Slot0 : COM6 、 COM7 、 COM8 、 COM9

Slot1 : COM10 、 COM11 、 COM12 、 COM13

Slot2 : COM14 、 COM15 、 COM16 、 COM17.....



Click the left option, COM Port will follow

→COM6 、 COM7 、 COM8 、 COM9 、 COM10 、 COM11.....

