

Classification	System and Application FAQ on WinCE PAC				No.	1-004-01	
Author	Tunglu-Yu	Version	1.0.1	Date	2013/8/06	Page	1/5

How to set up an Egalax USB touch panel

Applies to:

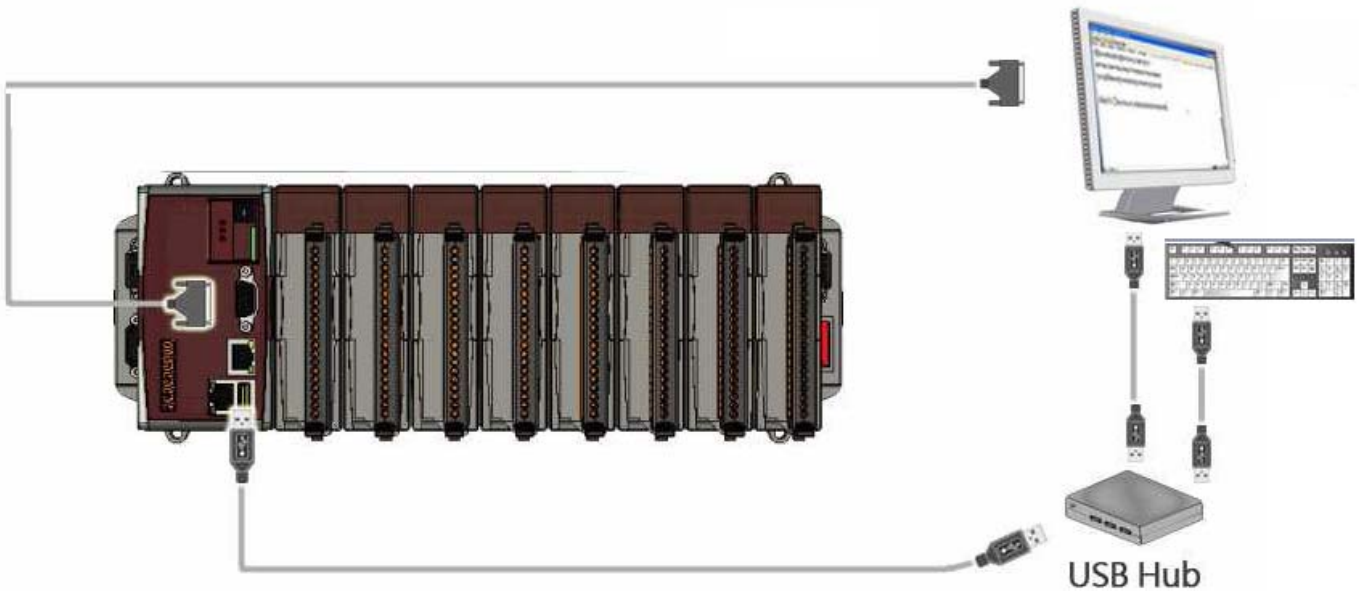
<i>Platform</i>	<i>OS version</i>	<i>WinPAC/ViewPAC utility version</i>
<i>WP-8x3x/ WP-8x4x</i>	<i>All versions</i>	<i>All versions</i>
<i>WP-5000</i>	<i>All versions</i>	<i>All versions</i>
<i>VP-23W1/ VP-25W1</i>	<i>N/A</i>	<i>N/A</i>
<i>VP-4131</i>	<i>N/A</i>	<i>N/A</i>

N/A: Not applicable to this platform and OS.

Tips & Warnings



To use a touch panel and a keyboard at the same time on WP-8x4x, you need a USB hub to expand the single USB port into several.



Classification	System and Application FAQ on WinCE PAC				No.	1-004-01	
Author	Tunglu-Yu	Version	1.0.1	Date	2013/8/06	Page	2/5

To use an Egalax USB touch panel, perform the following steps:

Step 1: Locate the driver.

The **Egalax_USB_TOUCH_V20100507.CAB** file is located at

1. **WinPAC file path:** \Micro_SD\External_device_driver\
2. CD: \napdos\wp-8x4x_ce50\Micro_SD\External_device_driver\
3. ftp://ftp.icpdas.com/pub/cd/winpac/napdos/wp-8x4x_ce50/Micro_SD/
external_device_driver/

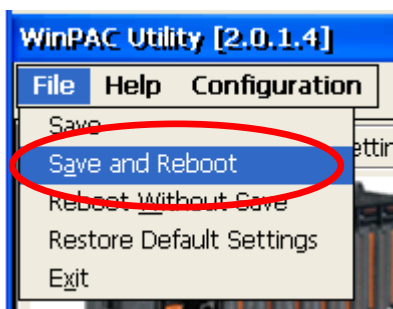
Step 2: Install the driver.

- 2.1. Double click the **Egalax_USB_TOUCH_V20100507.CAB** file, and then click "OK".



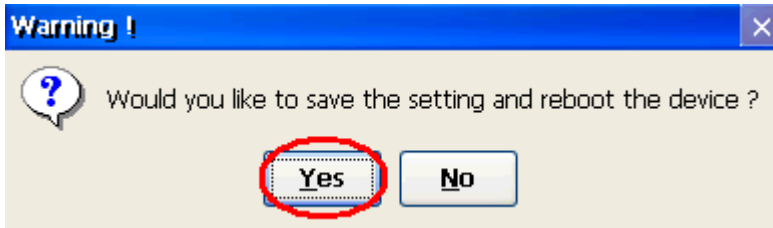
Step 3: Save and Reboot your WinPAC.

- 3.1. Start the Win PAC utility. Click the "File" → "Save and Reboot" menu option.



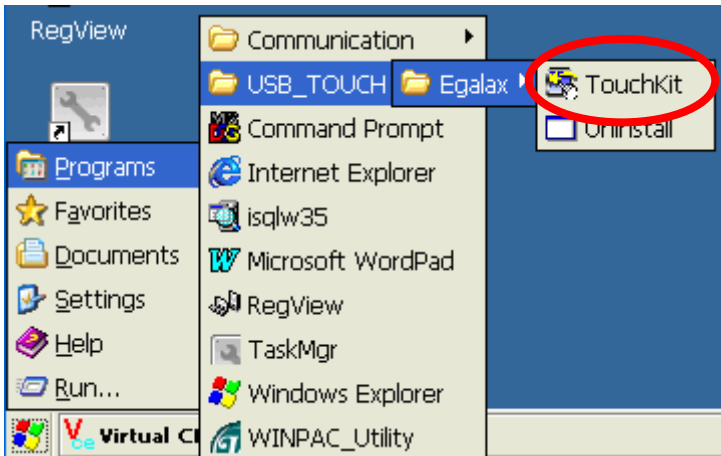
Classification	System and Application FAQ on WinCE PAC				No.	1-004-01	
Author	Tunglu-Yu	Version	1.0.1	Date	2013/8/06	Page	3/5

3.2. Click the “**Yes**” button and wait for reboot.



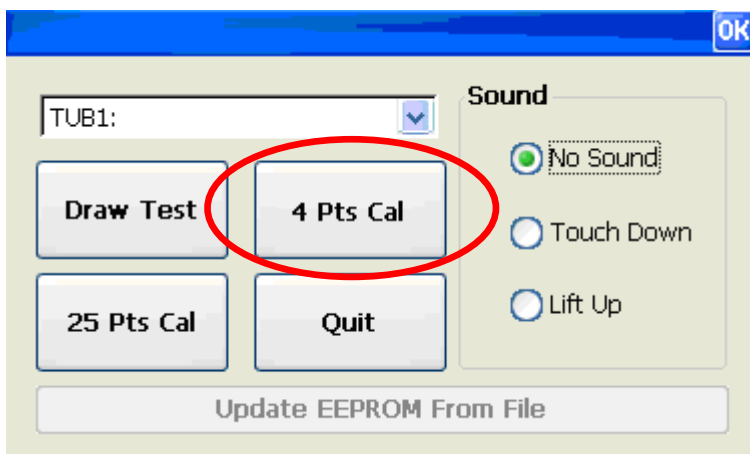
Step 4: Calibrate the touch panel.

4.1. After rebooting, click Start → Programs → USB_TOUCH → Egalax → TouchKit.



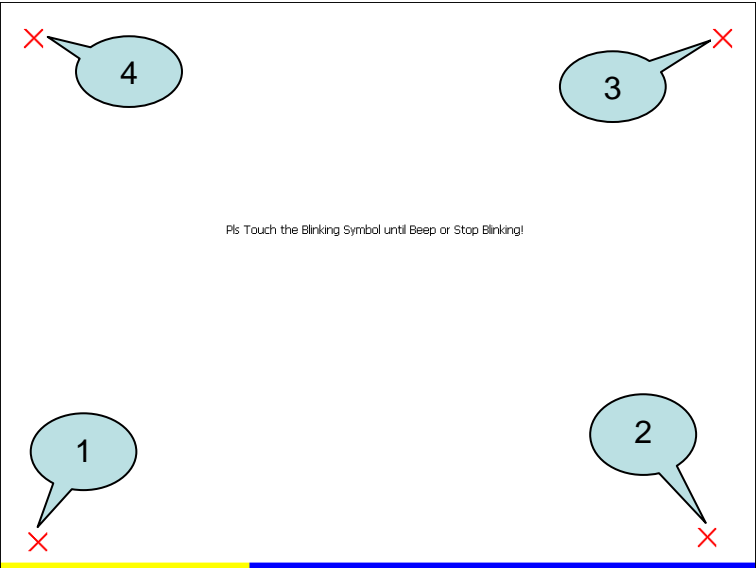
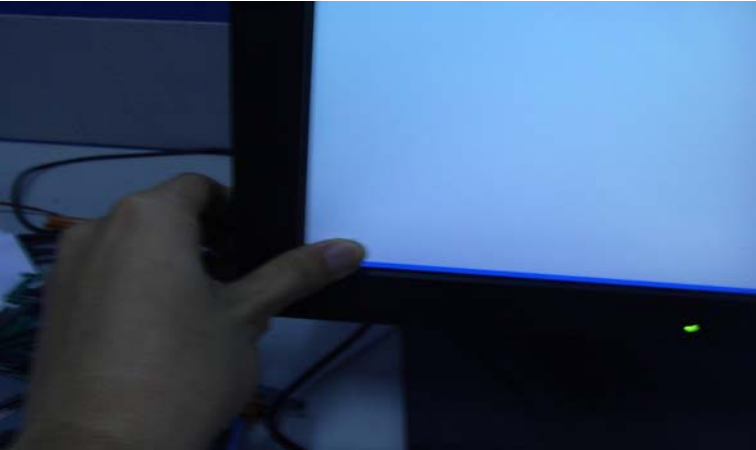
4.2. Click the “**4 Pts Cal**” button.

(Clicking the “25 Pts Cal” button could run a more accurate calibration process)



Classification	System and Application FAQ on WinCE PAC				No.	1-004-01	
Author	Tunglu-Yu	Version	1.0.1	Date	2013/8/06	Page	4/5

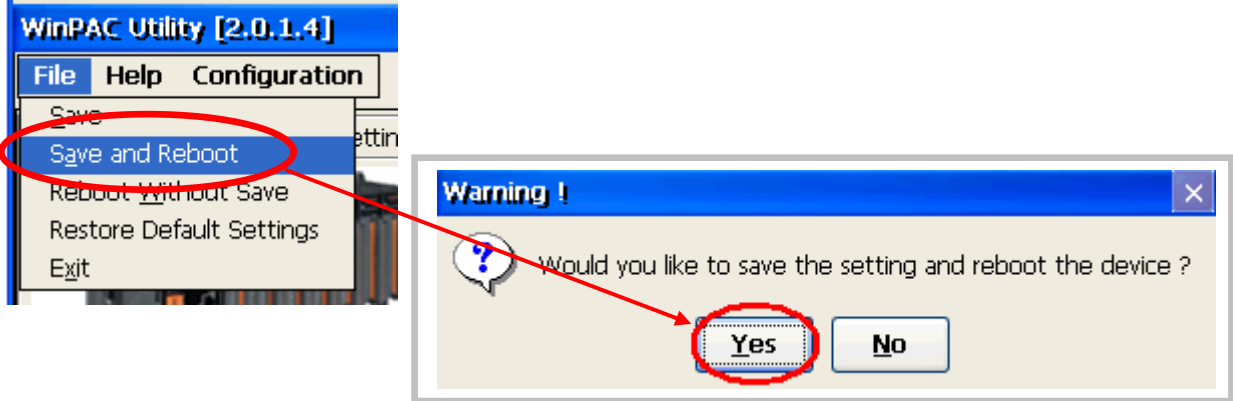
4.3. Touch the “X” icons on the monitor one by one to perform the calibration process.



Step 5: Save the settings.

5.1. Start the Win PAC utility; click the “File” → “Save and Reboot” menu option.

5.2. Click the “Yes” button and wait for reboot.



Classification	System and Application FAQ on WinCE PAC				No.	1-004-01	
Author	Tunglu-Yu	Version	1.0.1	Date	2013/8/06	Page	5/5

Revision History

Revision	Date	Description
1.0.1	2013/08/06	NEW: Added support information for WP-5000 series
1.0.0	2010/02/12	Initial release