

Classification	System and Application FAQ on WinCE PAC				No.	2-013-00	
Author	Tunglu-Yu	Version	1.0.1	Date	2013/08/06	Page	1/4

How to set the taskbar always on top?

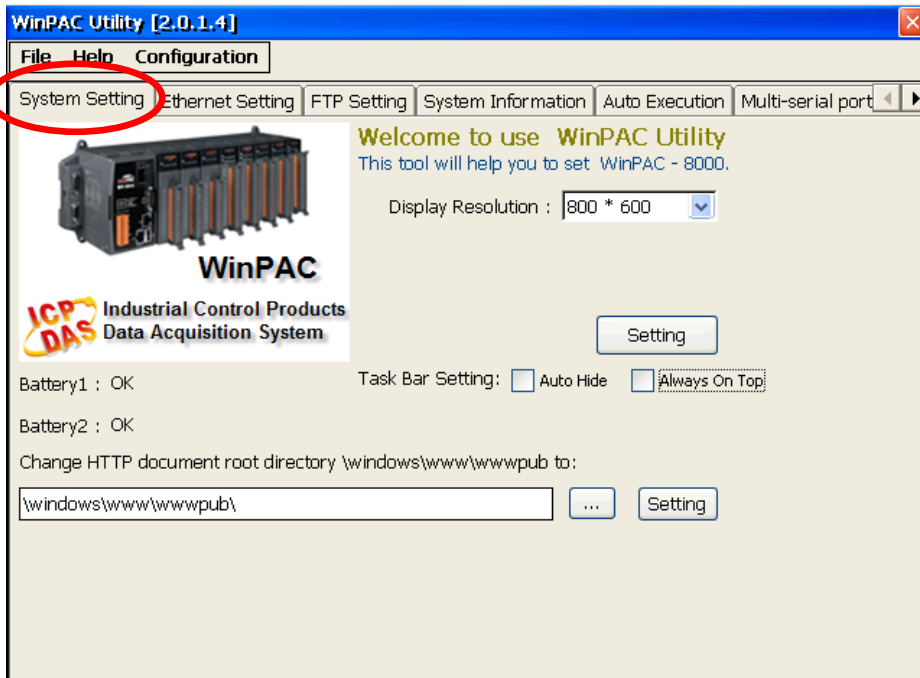
Applies to:

Platform	OS version	WinPAC/ViewPAC utility version
WP-8x3x/ WP-8x4x	All versions	All versions
WP-5000	All versions	All versions
VP-23W1/ VP-25W1	All versions	All versions
VP-4131	All versions	All versions

Depending on your preferences, you may want to set the taskbar to be always on top; it means that the taskbar is not shielded by other windows. To set the taskbar to be always on top, perform the following steps:

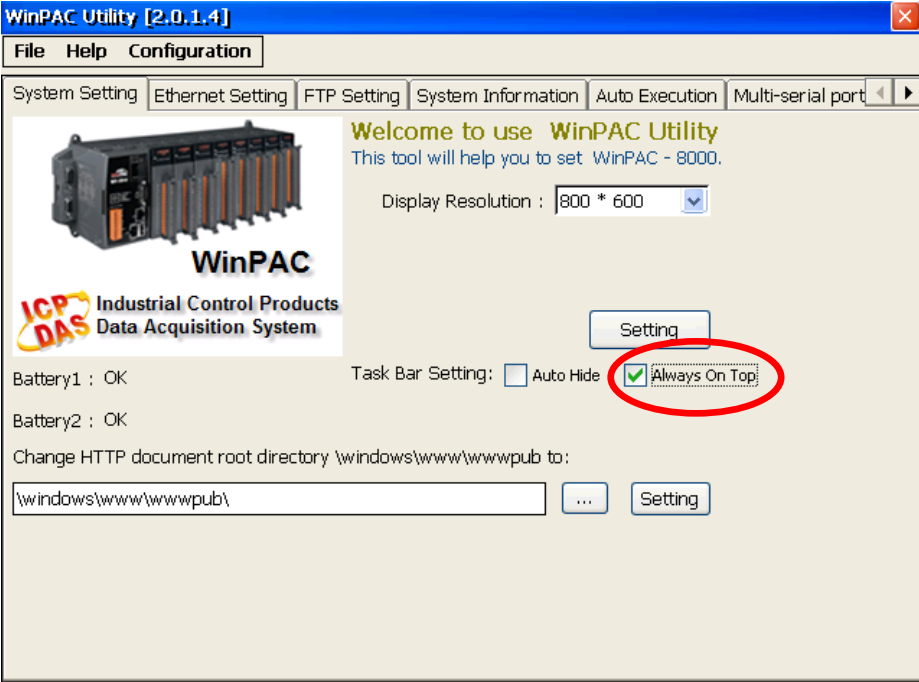
Step 1: Set the taskbar on top.

- 1.1. Start the WinPAC/ViewPAC Utility on the desktop, and then click the “**System Setting**” tab.



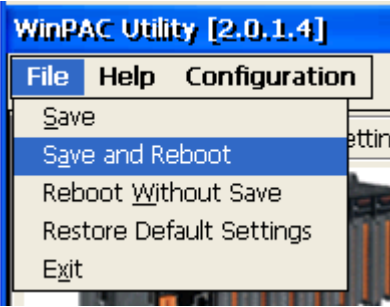
Classification	System and Application FAQ on WinCE PAC				No.	2-013-00	
Author	Tunglu-Yu	Version	1.0.1	Date	2013/08/06	Page	2/4

1.2. Check the “Always On Top” option.

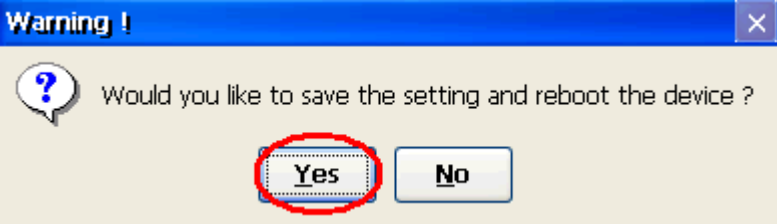


Step 2: Save the setting.

2.1. Click the “File” → “Save and Reboot” menu option.

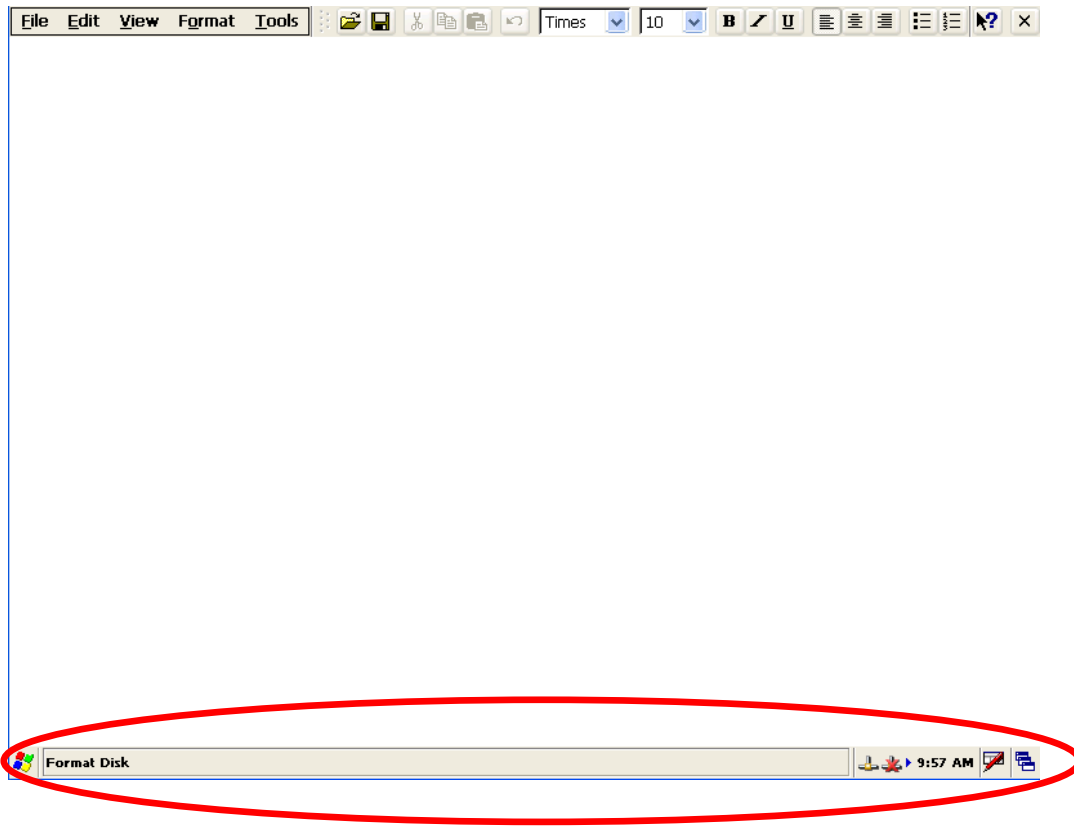


2.2. Click the “Yes” button and wait for the device to reboot.



Classification	System and Application FAQ on WinCE PAC				No.	2-013-00	
Author	Tunglu-Yu	Version	1.0.1	Date	2013/08/06	Page	3/4

After rebooting, the taskbar will not be covered by any other windows.



Classification	System and Application FAQ on WinCE PAC				No.	2-013-00	
Author	Tunglu-Yu	Version	1.0.1	Date	2013/08/06	Page	4/4

Revision History

Revision	Date	Description
1.0.1	2013/08/06	NEW: Added support information for WP-5000 and VP-4131.
1.0.0	2010/02/12	Initial release