

Classification	System and Application FAQ on WinCE PAC				No.	2-003-00	
Author	Tunglu-Yu	Version	1.0.1	Date	2013/08/16	Page	1/5

How to set the startup programs on WinCE PAC

Applies to:

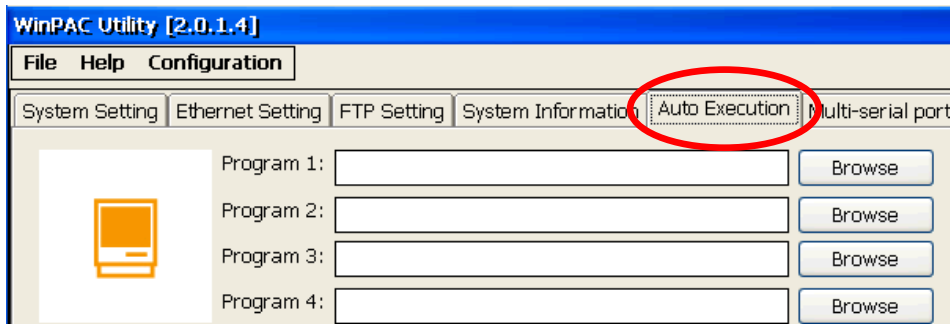
Platform	OS version	WinPAC/ViewPAC utility version
WP-8x3x/ XP-8x4x	All versions	All versions
WP-5000	All versions	All versions
VP-23W1/ VP-23W1	All versions	All versions
VP-4131	All versions	All versions

In WinPAC (and ViewPAC) utility, it offers an easy-to-use interface to manage the startup programs. The programs which are set in the utility will run automatically at system startup.

Here we illustrate the steps of how to set the startup programs and clear those settings.

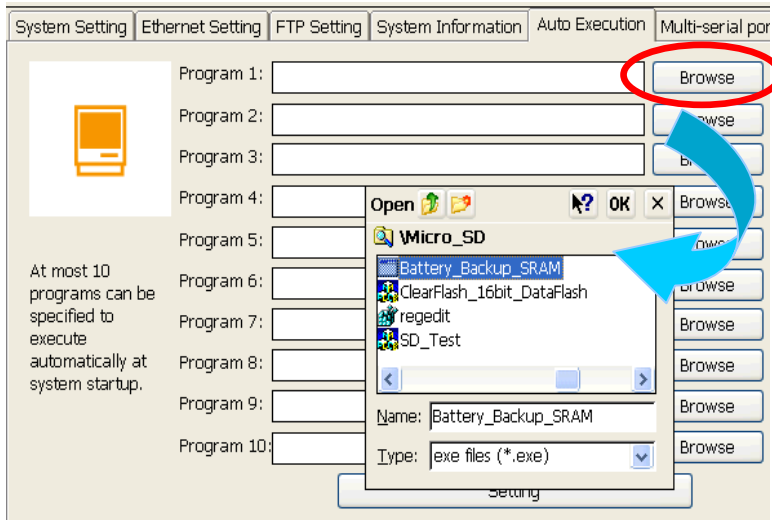
Part 1. Set the startup programs

Setp1. Start the WinPAC/ViewPAC Utility on the desktop and then click the "Auto Execution" tab.

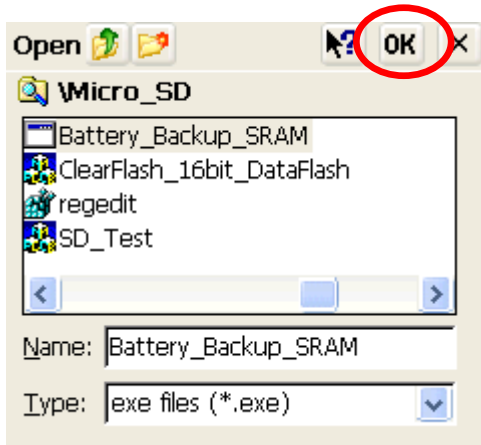


Classification	System and Application FAQ on WinCE PAC				No.	2-003-00	
Author	Tunglu-Yu	Version	1.0.1	Date	2013/08/16	Page	2/5

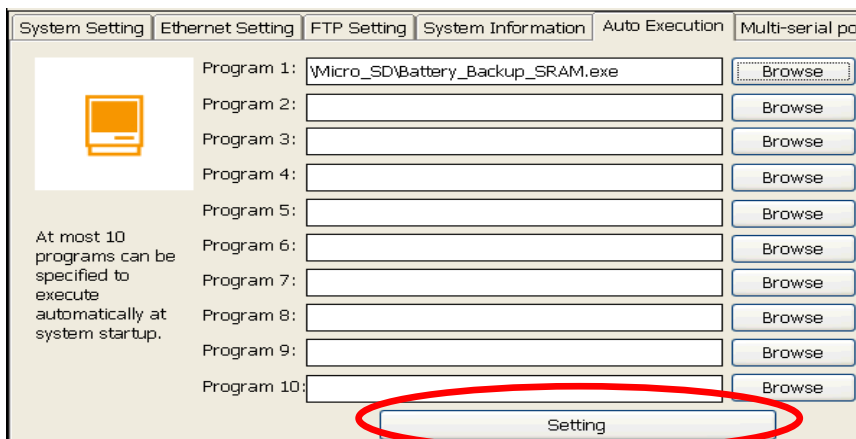
Step2. Click the “Browse” button and then select the program you want to run automatically after PAC boot-up.



Step3. Click the “OK” button.

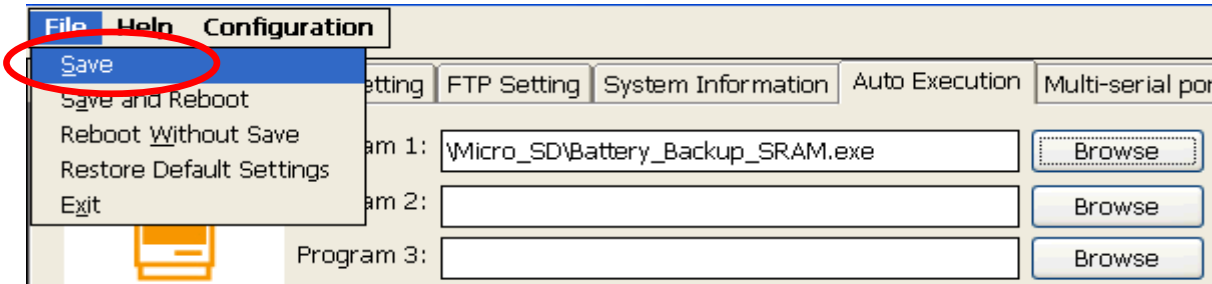


Step4. Click the “Setting” button.

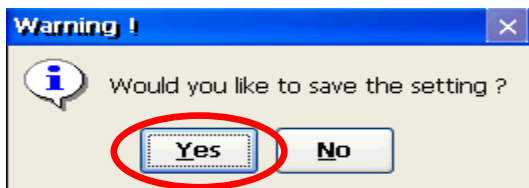


Classification	System and Application FAQ on WinCE PAC				No.	2-003-00	
Author	Tunglu-Yu	Version	1.0.1	Date	2013/08/16	Page	3/5

Step5. Click “**File**” and then click “**Save**” to save the setting.



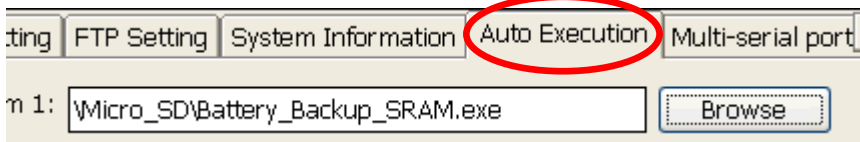
Step6. Click the “**Yes**” button.



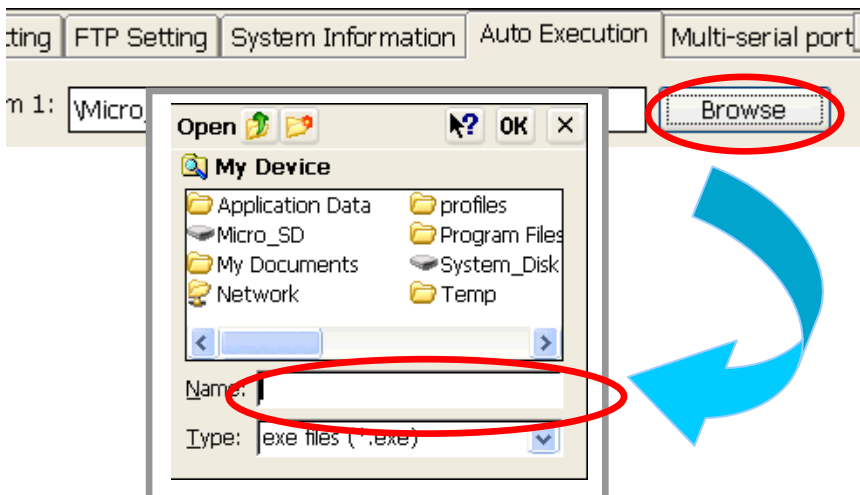
Step7. Reboot the PAC, the specified programs will run automatically.

Part 2. Clear the startup programs settings

Step1. Start the WinPAC/ViewPAC Utility click the “Auto Execution” tab.

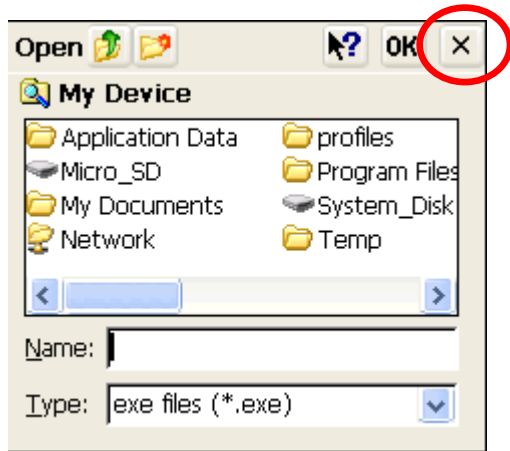


Step2. Click the “**Browse**” button and leave the Name column empty.

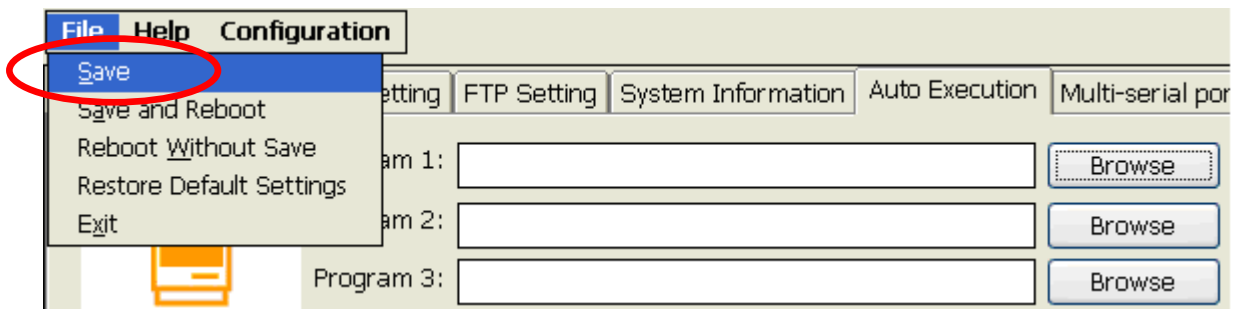


Classification	System and Application FAQ on WinCE PAC				No.	2-003-00	
Author	Tunglu-Yu	Version	1.0.1	Date	2013/08/16	Page	4/5

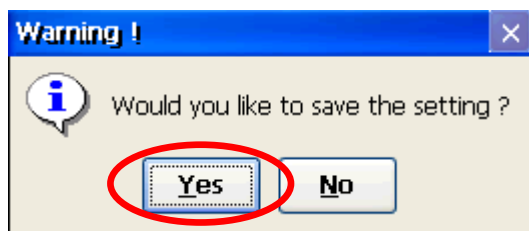
Step3. Click the "X" button.



Step4. Click the "File" item and then click "Save" to save the settings.



Step5. Click the "Yes" button.



Classification	System and Application FAQ on WinCE PAC				No.	2-003-00	
Author	Tunglu-Yu	Version	1.0.1	Date	2013/08/16	Page	5/5

Revision History

Revision	Date	Description
1.0.1	2013/08/06	NEW: Added support information for WP-5000 and VP-4131.
1.0.0	2010/02/12	Initial release