

Classification	System and Application FAQ on WinCE PAC				No.	2-004-00	
Author	Tunglu-Yu	Version	1.0.1	Date	2013/08/16	Page	1/5

## How to edit the registry

### Applies to:

Platform	OS version	WinPAC/ViewPAC utility version
WP-8x3x/ WP-8x4x	All versions	All versions
WP-5000	All versions	All versions
VP-23W1/ VP-25W1	All versions	All versions
VP-4131	All versions	All versions

## Tips & Warnings



Editing the registry may result in unexpected errors.



After finishing the editing, refer to section 4 to save those modifications

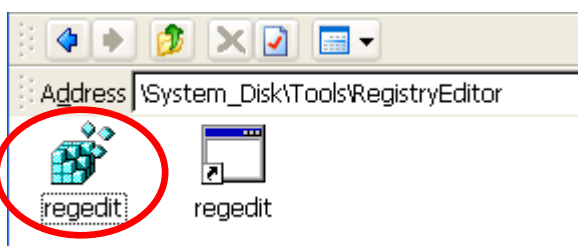
This article shows you how to edit the registry, how to add a new key and delete it; after you finish the editing, refer to section 4 to save those modifications.

The edit tool “**regedit.exe**” is located at

1. The “\System\_Disk\Tools\RegistryEditor” folder on the WinPAC/ViewPAC device.
2. [ftp://ftp.icpdas.com/pub/cd/winpac/napdos/wp-8x4x\\_ce50/system\\_disk/tools/registryeditor](ftp://ftp.icpdas.com/pub/cd/winpac/napdos/wp-8x4x_ce50/system_disk/tools/registryeditor)

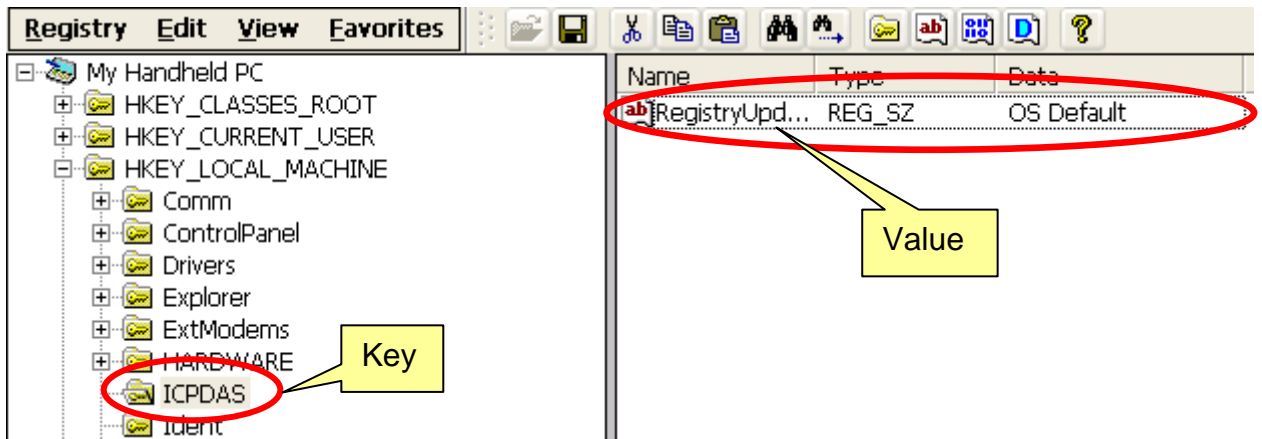
## 1. Editing the registry.

Step1. Double click the regedit.exe icon.

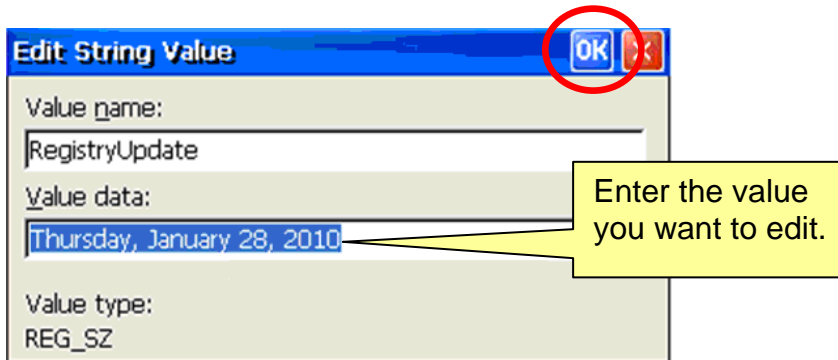


Step2. Select the key or value you want to edit.

Classification	System and Application FAQ on WinCE PAC				No.	2-004-00	
Author	Tunglu-Yu	Version	1.0.1	Date	2013/08/16	Page	2/5

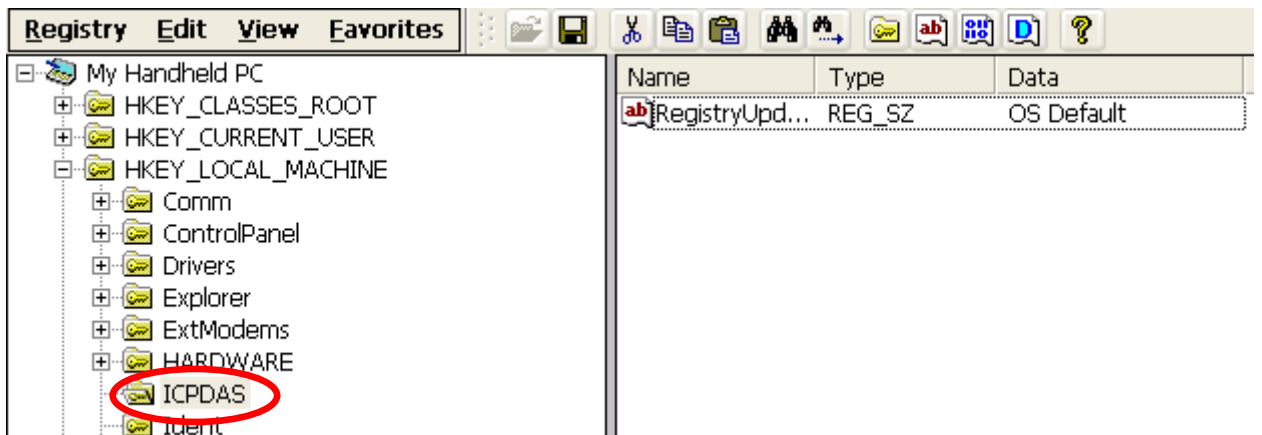


Step3. Double click the value you want to edit, enter the new value and then click “OK”.



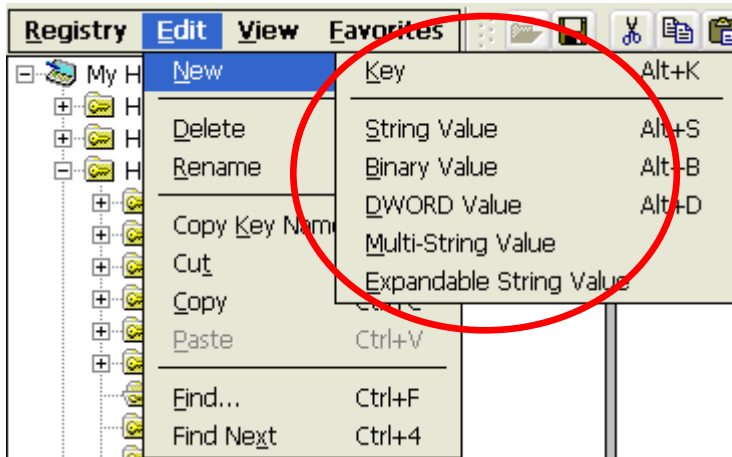
## 2. Adding a new sub key or value.

Step1. Go to the “Path” where you want to add a new sub key or value.

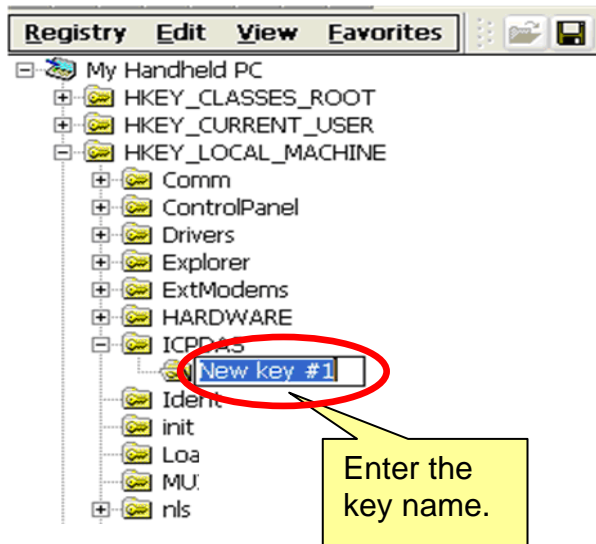


Step2. Click “Edit” → “New” on the menu and select an item you need.

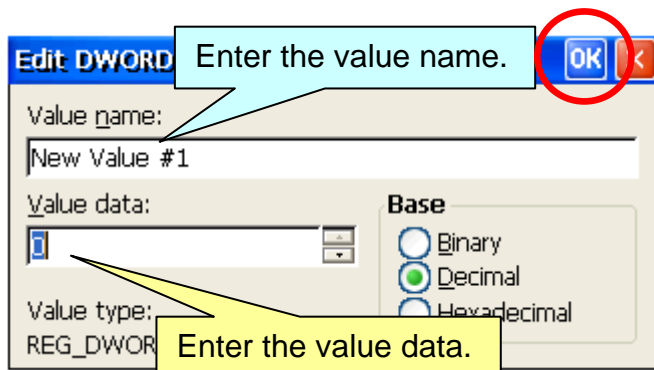
Classification	System and Application FAQ on WinCE PAC				No.	2-004-00	
Author	Tunglu-Yu	Version	1.0.1	Date	2013/08/16	Page	3/5



Step3. Enter the key name.



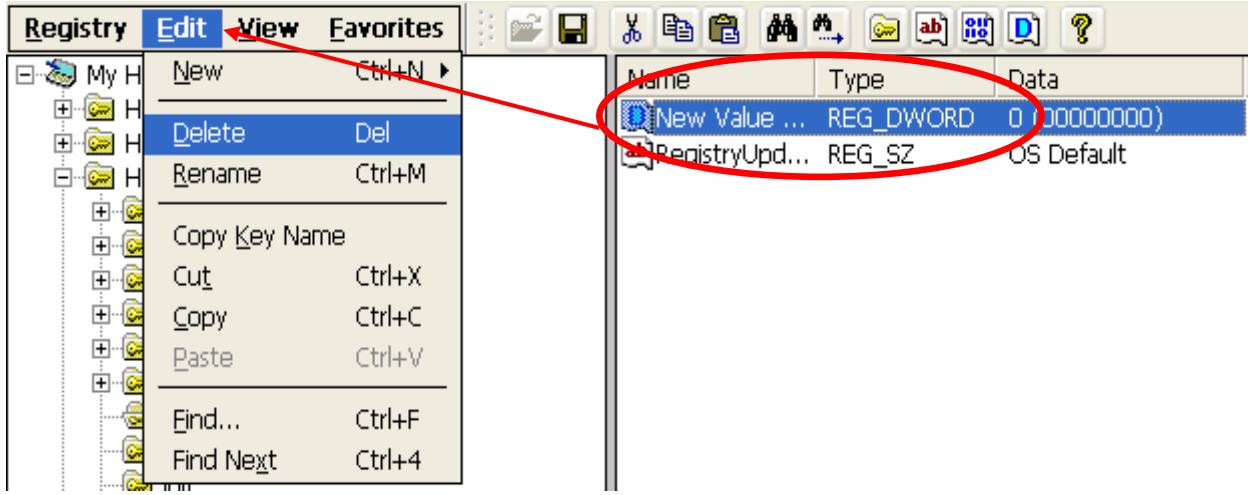
Step4. Key in the value name and value data, and then click "OK".



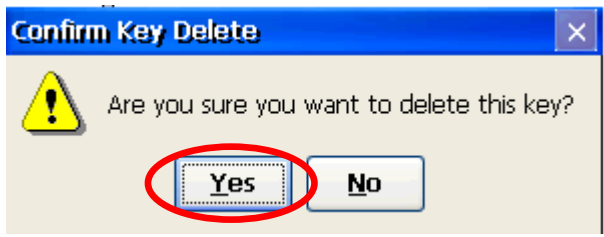
Classification	System and Application FAQ on WinCE PAC				No.	2-004-00	
Author	Tunglu-Yu	Version	1.0.1	Date	2013/08/16	Page	4/5

### 3. Deleting a key or value.

Step1. Click the key or value you want to delete, and then click **“Edit”** → **“Delete”**.

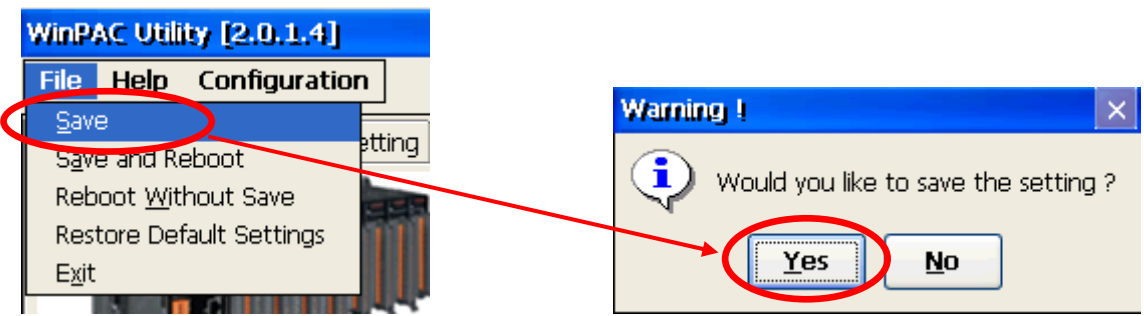


Step2. Click **“Yes”** to confirm deletion.



### 4. Saving the registry modification

Step1. Start the WinPAC/ViewPAC Utility, click **“File”** → **“Save”**.



Step2. Click the **“Yes”** button.

Classification	System and Application FAQ on WinCE PAC				No.	2-004-00	
Author	Tunglu-Yu	Version	1.0.1	Date	2013/08/16	Page	5/5

## Revision History

Revision	Date	Description
1.0.1	2013/08/06	NEW: Added support information for WP-5000 and VP-4131.
1.0.0	2010/02/12	Initial release