

Classification	System and Application FAQ on WinCE PAC				No.	2-014-00	
Author	Tunglu-Yu	Version	1.0.1	Date	2013/05/16	Page	1/5

How to configure a Windows PC as an authoritative time server in LAN

Applies to:

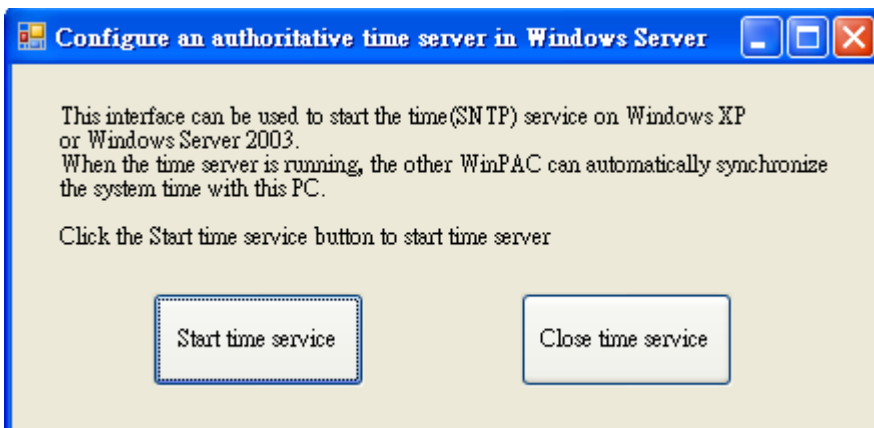
Platform	OS version	WinPAC/ViewPAC utility version
WP-8x3x	V1.2.0.2 and later	V2.0.2.0 and later
WP-8x4x	V1.5.0.2 and later	V2.0.2.0 and later
VP-25W1	V2.0.0.1 and later	V2.0.2.0 and later
VP-23W1	V2.1.0.0 and later	V2.0.2.0 and later
WP-5000	All versions	All versions
VP-4131	All versions	All versions

The system time on the WinPAC is not always accurate, so you may need to use an authoritative time server in order to synchronize the system time on WinPAC. However, many people rely on the time server in a closed network for security reasons. To overcome this, ICP DAS provides a program to set a Windows XP or Windows 2000 PC as the authoritative time server, so that you can synchronize the system time on WinPAC in a closed LAN.

To configure an authoritative time server in Windows XP or Windows 2000, perform the following steps:

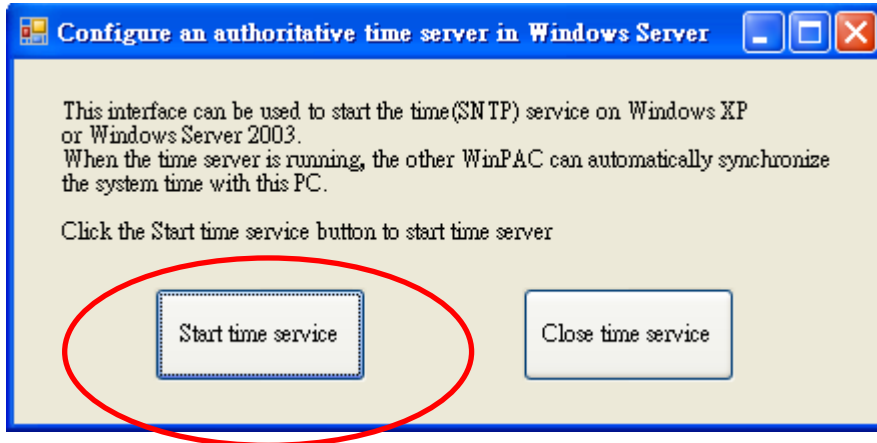
On the PC Side

Step 1: Execute the `SNTP_server_interface.exe` program on the PC.
(The `SNTP_server_interface.exe` program is located at `CD:\\napdos\\wp-8x4x_ce50\\PC_Tools\\SNTP_server_interface`)

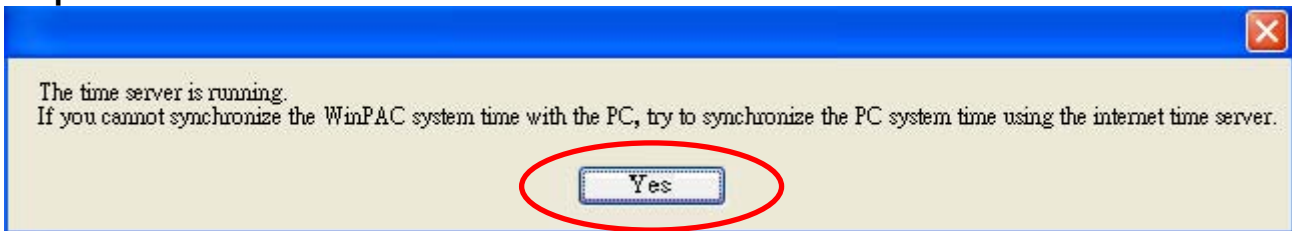


Classification	System and Application FAQ on WinCE PAC				No.	2-014-00	
Author	Tunglu-Yu	Version	1.0.1	Date	2013/05/16	Page	2/5

Step 2: Click the “Start time service” button.
(If you want to close the time service, click the “Close time service” button)



Step 3: Click the “Yes” button to start the time server.



Tips & Warnings



Before you synchronize the WinPAC system time with the time server, make sure the WinPAC and time server are well connected to the LAN network.

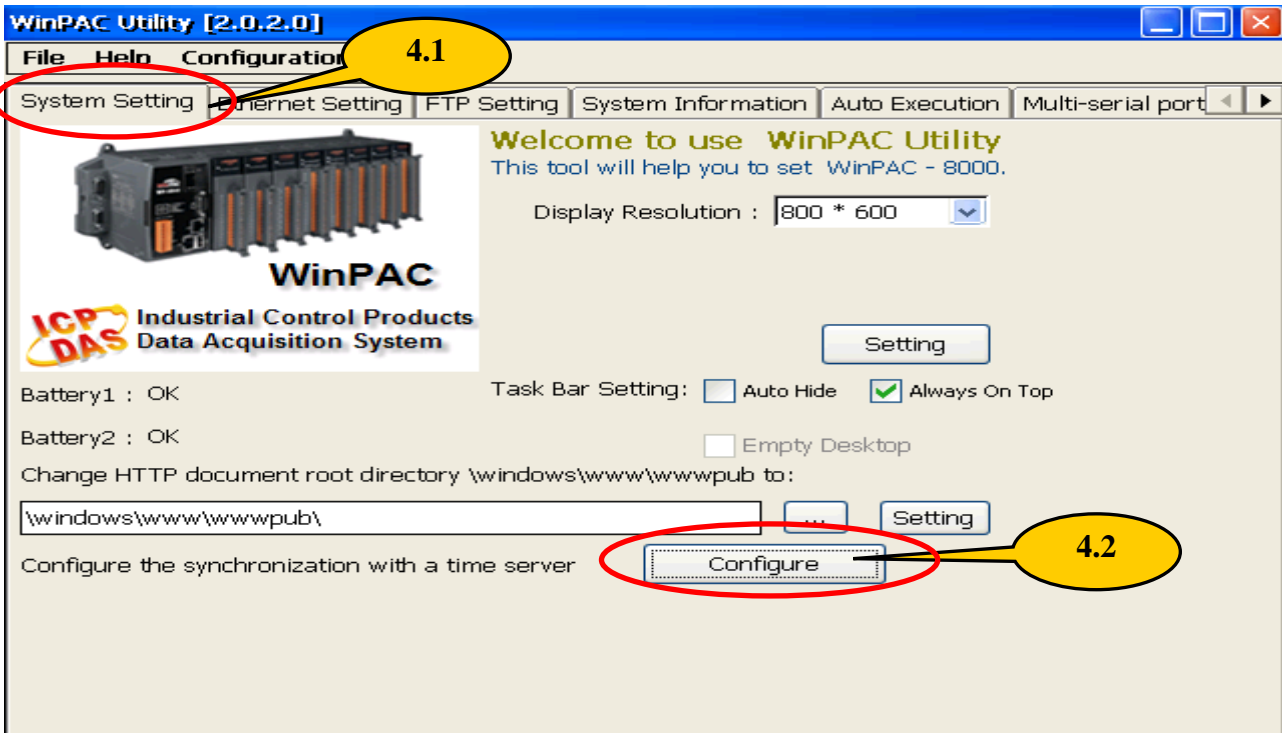
Classification	System and Application FAQ on WinCE PAC				No.	2-014-00	
Author	Tunglu-Yu	Version	1.0.1	Date	2013/05/16	Page	3/5

On the WinPAC/ViewPAC Side

Step 4: Synchronize the time on the WinPAC system with the time server.

4.1: Execute the WinPAC utility on the desktop and click the "System Settings" page.

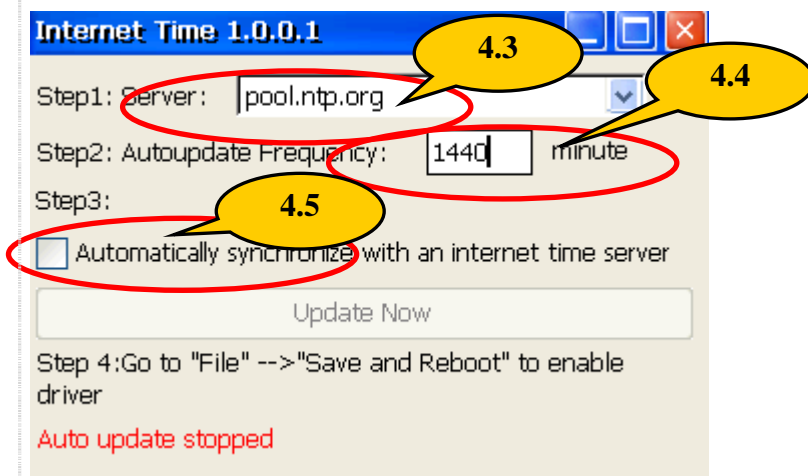
4.2: Click the "Configure" button.



4.3: Enter the IP address for the LAN time server.

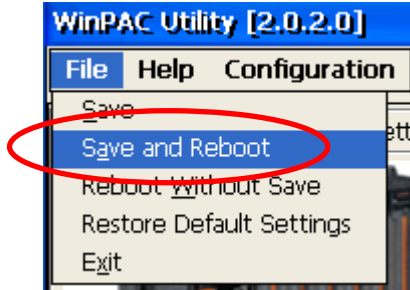
4.4: Enter a value for the Synchronization frequency.

4.5: Check the "Automatically synchronize with an internet time server" check box.



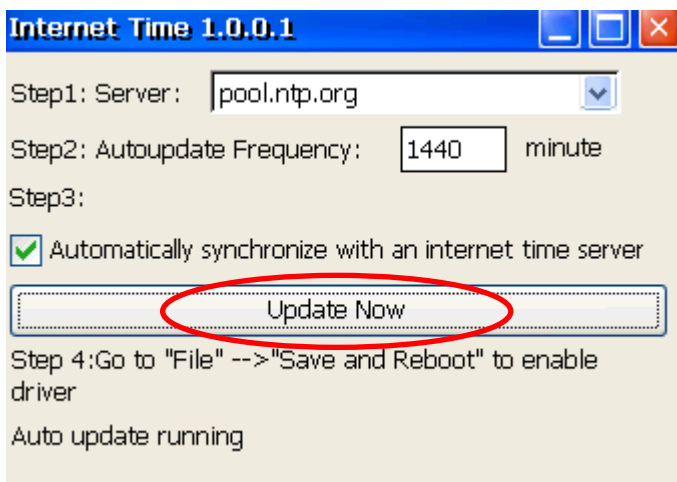
Classification	System and Application FAQ on WinCE PAC				No.	2-014-00	
Author	Tunglu-Yu	Version	1.0.1	Date	2013/05/16	Page	4/5

4.6: Click the "File->Save and Reboot" menu option.



4.7: After rebooting, automatically synchronizing with the internet time server will execute since it connects to the internet.

4.8: Click the "Update Now" button to immediately update the system time.



Classification	System and Application FAQ on WinCE PAC				No.	2-014-00	
Author	Tunglu-Yu	Version	1.0.1	Date	2013/05/16	Page	5/5

Revision History

Revision	Date	Description
1.0.1	2013/05/16	NEW: Added support information for WP-5000 and VP-4131.
1.0.0	2010/10/21	Initial release