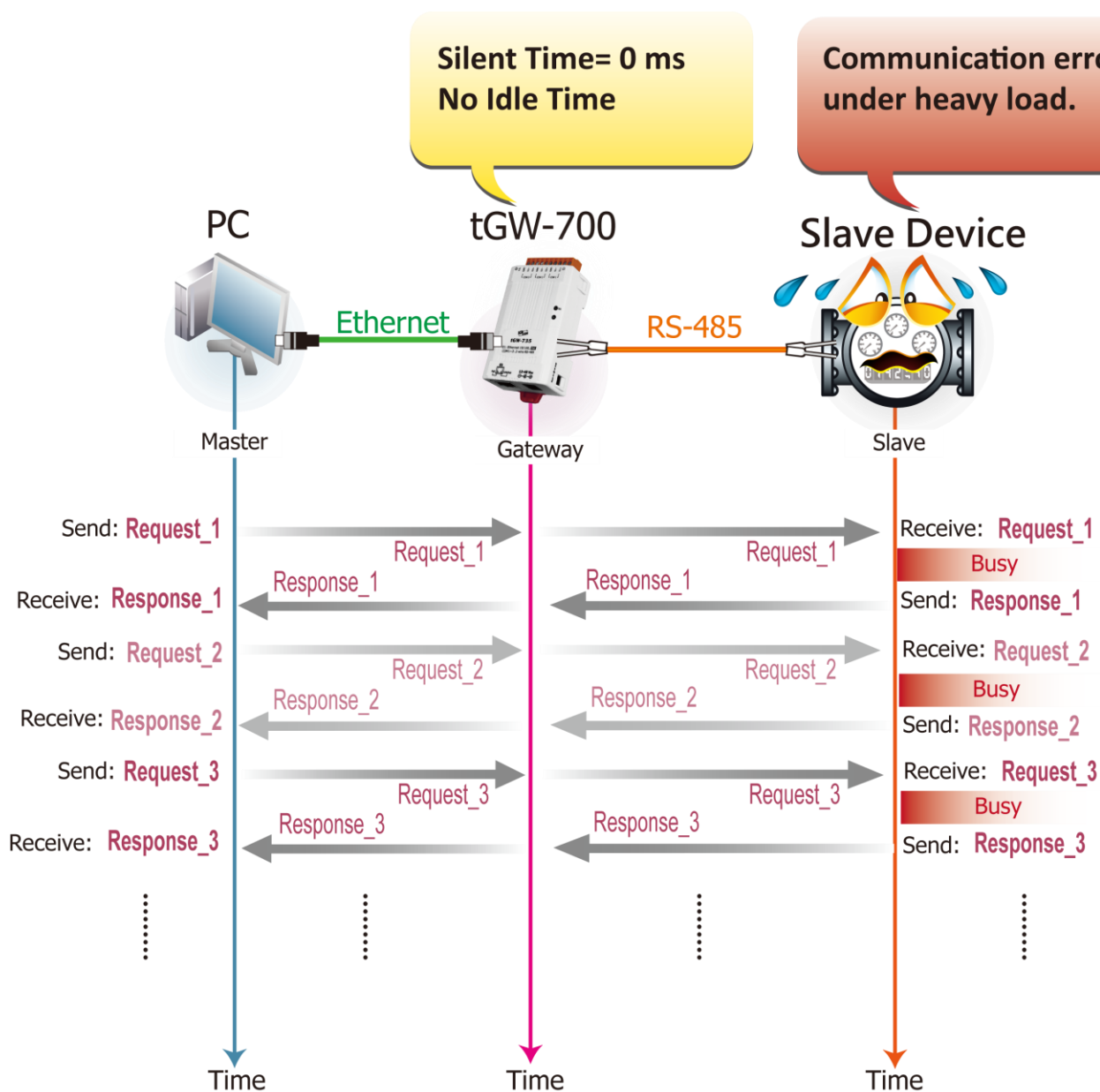


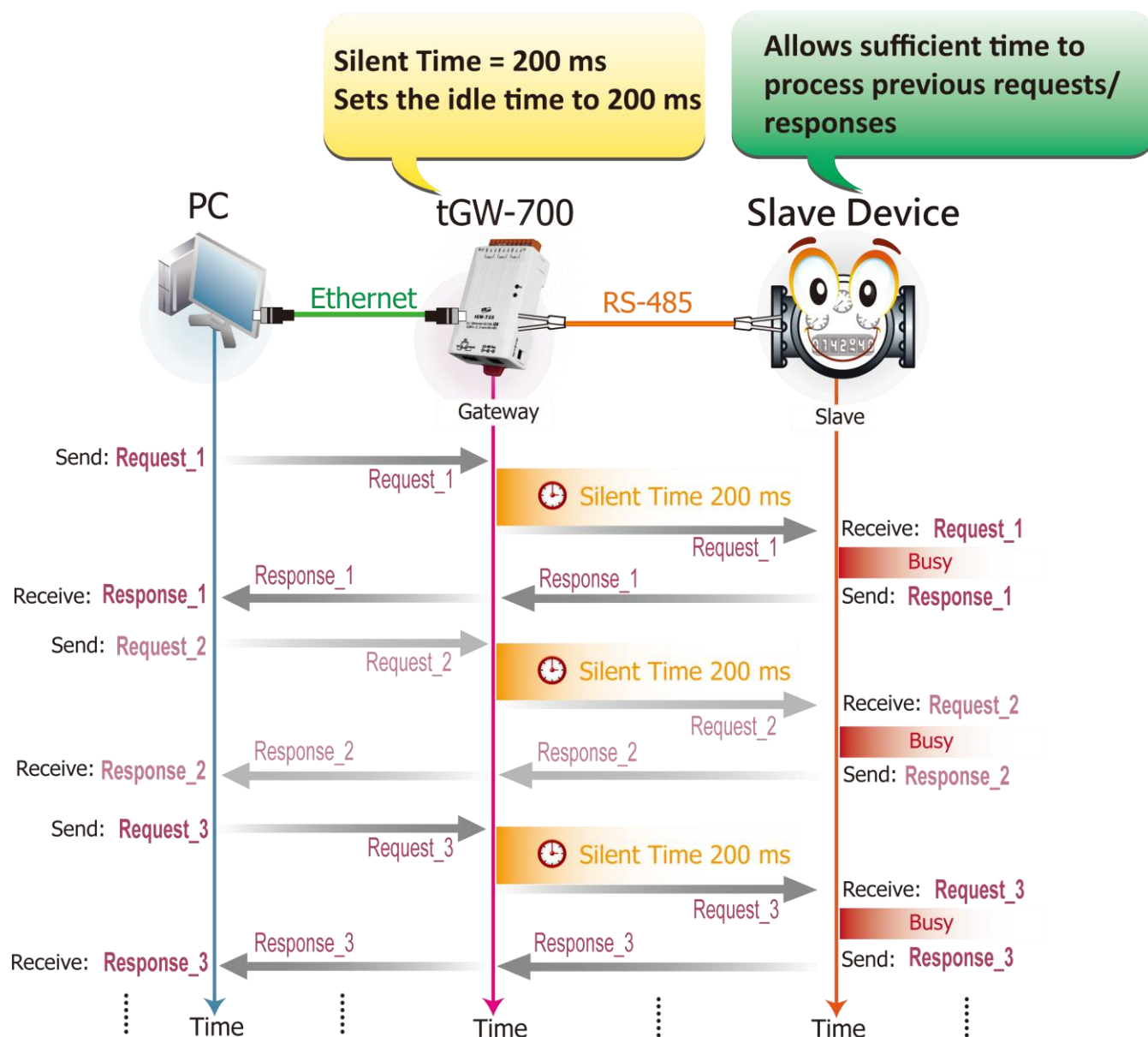


Q. What is the Silent Time function on the tGW-700?

A: If the processing capability of the slave device is poor, it will not be able to process too many communication requests within a short period of time. Consequently, this can lead to communication errors when the loading on the device is heavy.



The Silent Time function can be used to set the idle time that should elapse before sending each request to the serial port. This forces the serial bus to be "silent" during the specified time, and allows slower slave devices to process any previous requests or responses, thereby reducing communication problems.

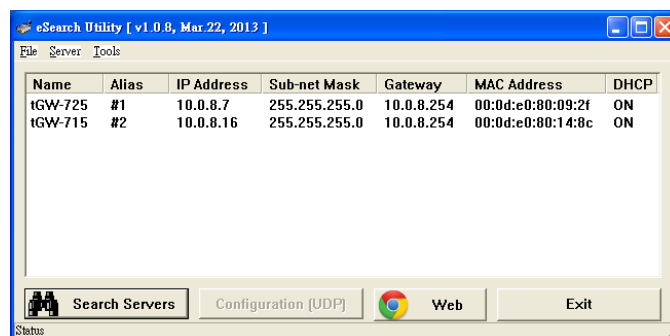


Follow the procedure described below to enable the Silent Time function on the tGW-700:

Step 1: Confirm that both the Ethernet connection and the tGW-700 series module are functioning correctly. For detailed information regarding how to install, configure and operate your tGW-700 series module, refer to the tGW-700 Quick Start Guide, which can be downloaded from:



[Download the Quick Start Guide.](#)



Step 2: Execute the eSearch Utility to search for any tGW-700 modules connected to the network, and then click the name of the tGW-700 module to select it.

Step 3: Click the **“Web”** button to log in to the web configuration pages for the tGW-700 module (use the default password **“admin”**), or enter the URL address of the tGW-700 in the address bar of the browser.

Step 4: Click the **“Port1”** tab to display the **Port1 Settings** page.

Step 5: Specify the **silent time** in the **Silent Time (ms)** field (for example, 200 ms), and then click the **“Submit”** button to complete the configuration.

Settings:

Port Settings	Current	Updated
Baud Rate (bps)	9600	9600 bits/S
Data Size (bits)	8	8 bits/character
Parity	None	None
Stop Bits (bits)	1	1
Silent Time (ms)	0	200 (0, 10, 20... 65530, Default: 0)
Silent Time (ms)	0	0 (0, 10, 20... 65530, Default: 0)
Read Cache (ms)	980	980 (10, 20... 65530, Disable: 0)
Local TCP Port	502	502 (Default: 502)
TCP Timeout (seconds)	180	180 (1 ~ 65535, Default: 180, Disable: 0)
Modbus Protocol	Modbus RTU	Modbus RTU
Pair-Connection Settings (Master/Slave Mode)	Current	Updated
Server Mode	Client	Client (Server=Slave, Client=Master)
Modbus Protocol	TCP	TCP
Remote Server IP	10.0.8.49	10 . 0 . 8 . 49
Remote TCP Port	502	502
RTU Slave ID (1~247)	7	7 (0: Bypass, No check)
TCP Slave ID (1~247)	1	1 (0: Same as RTU)
		Submit