

# 如何用 SIMATIC TIA portal 設定 I-7580 組態?

請參考下列步驟來設定專案。

## Step 1: 建立專案

- ◆ 雙擊 TIA 圖示來啟動 Step 7 V11

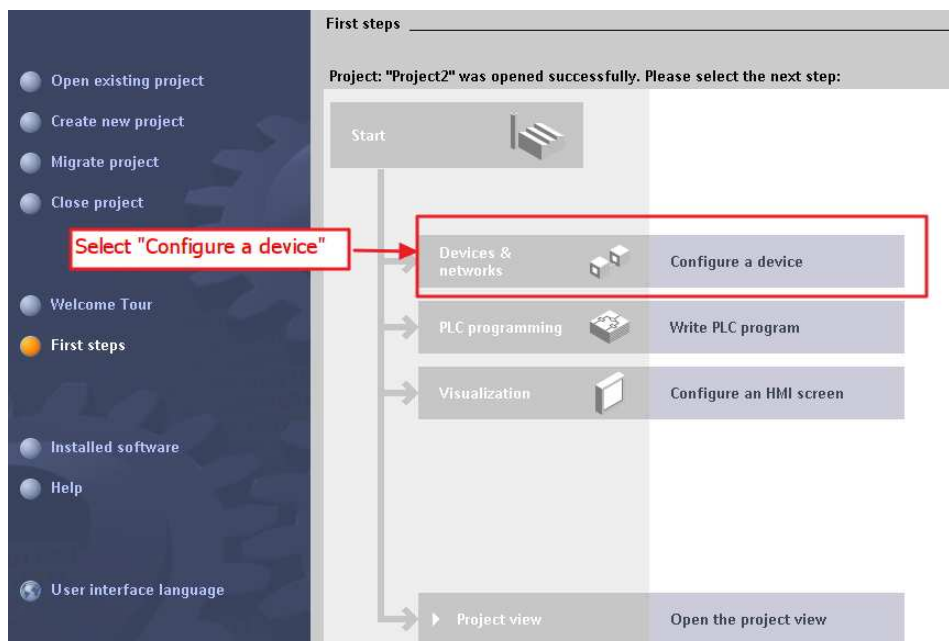


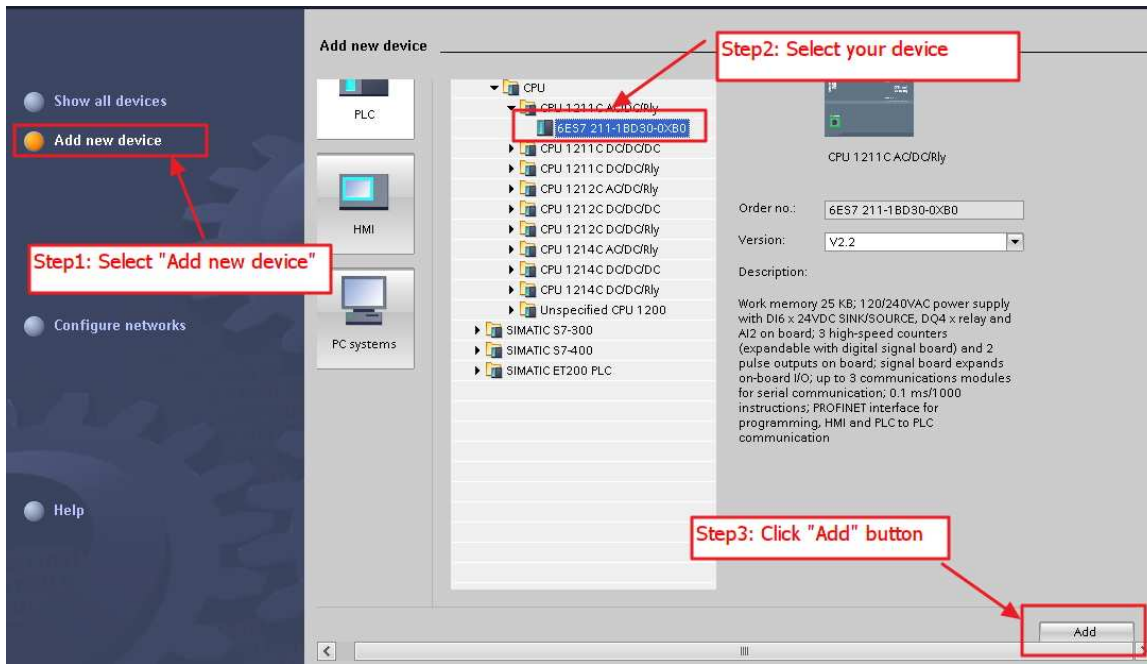
- ◆ 建立專案



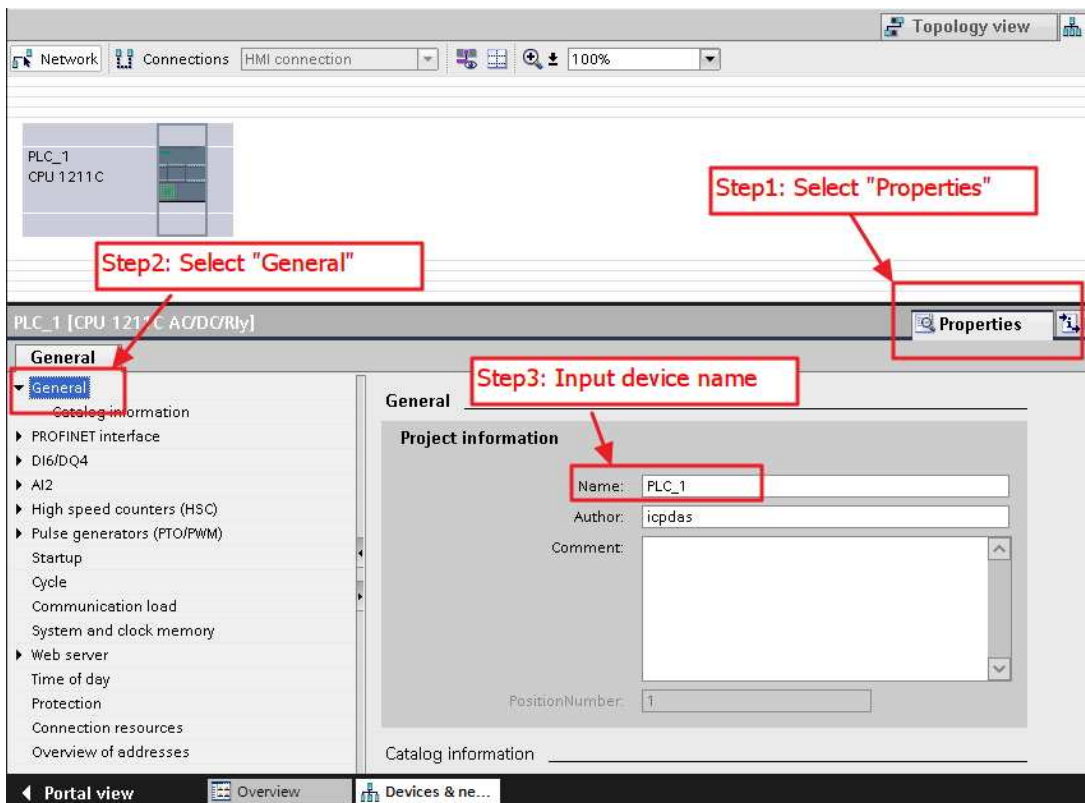
## Step 2: 專案配置

- ◆ 配置一個 PLC 裝置

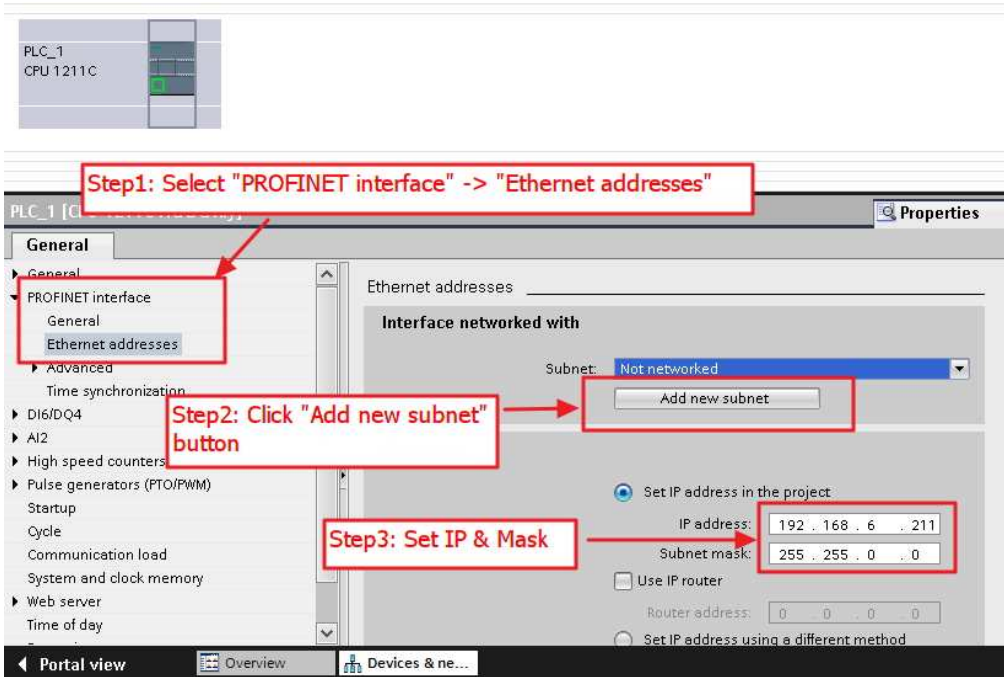




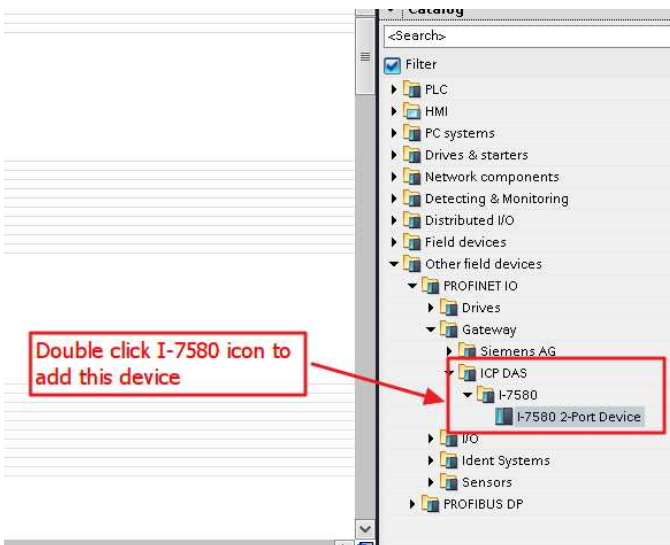
◆ 設定 PLC 的裝置名稱爲: PLC\_1



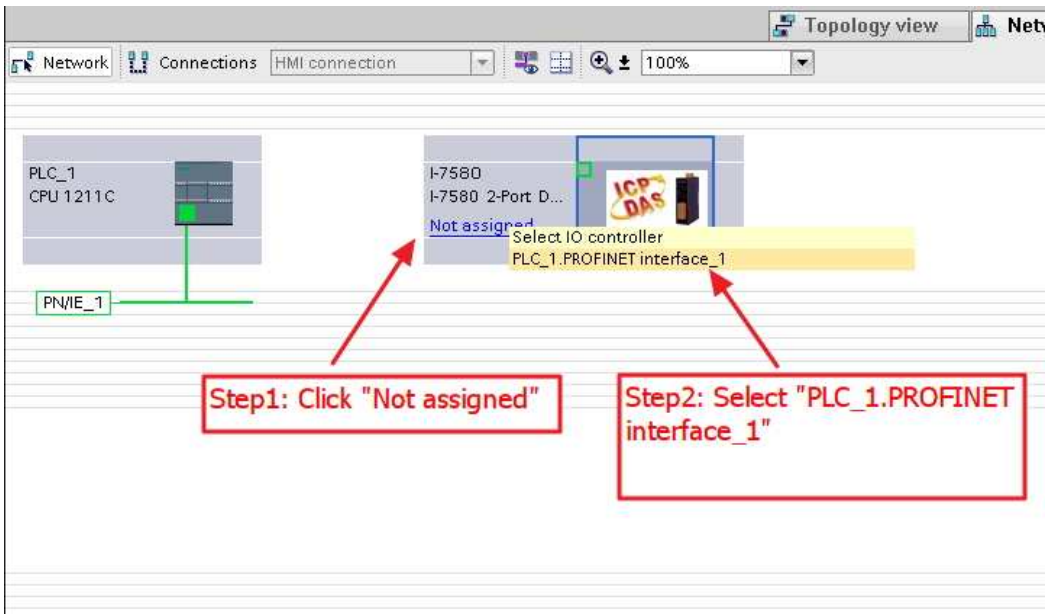
◆ 設定 PLC 的 IP 地址與網路遮罩並建立一個新的子網



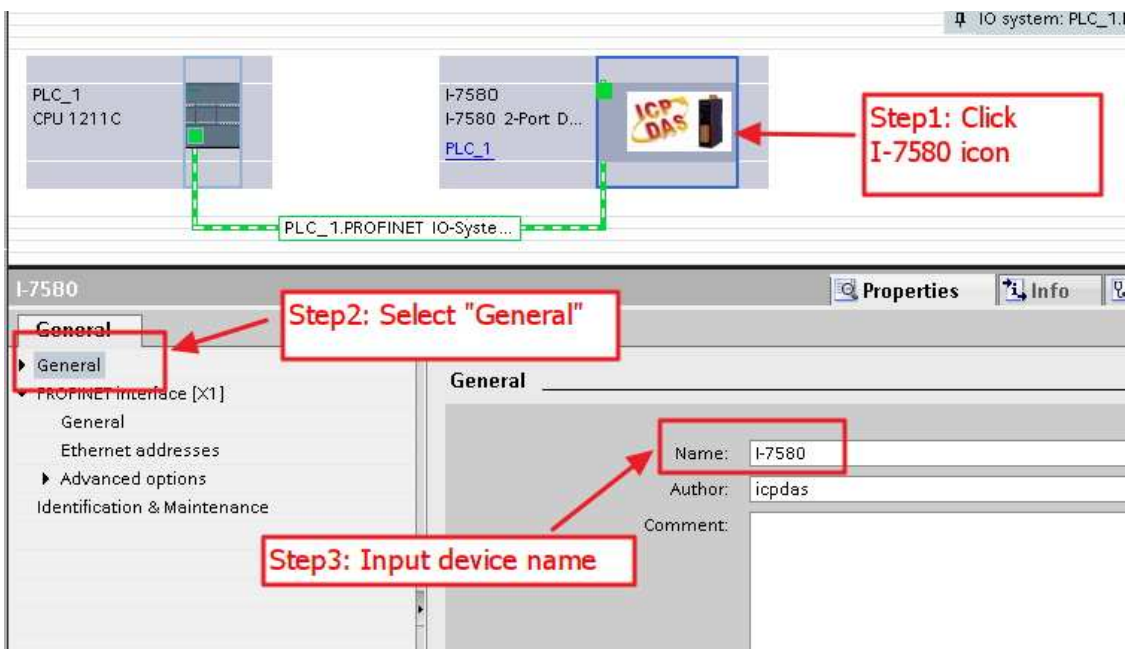
◆ 加入 I-7580 模組



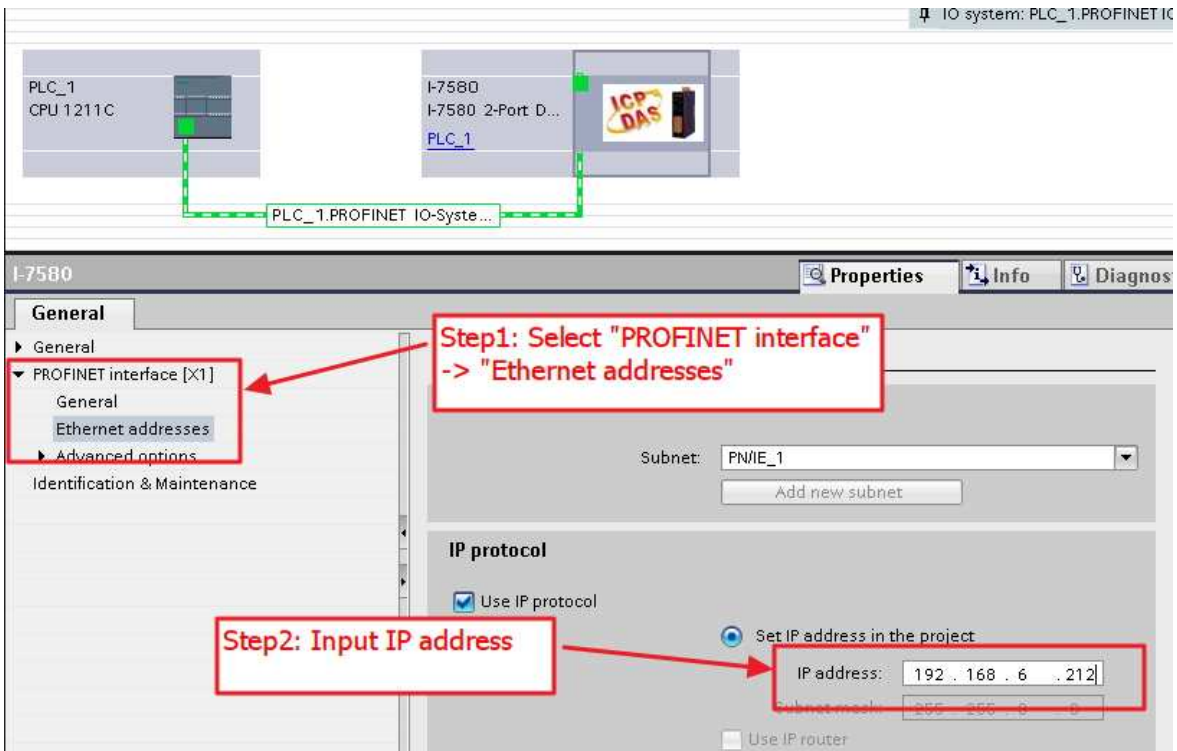
## ◆ 選擇 PROFINET 介面



## ◆ 設定裝置名稱爲“i-7580”



## ◆ 設定 I-7580 模組的 IP 地址



IO system: PLC\_1.PROFINET IO

PLC\_1 CPU 1211C

I-7580 I-7580 2-Port D... PLC\_1

PLC\_1.PROFINET IO-System...

I-7580 Properties Info Diagnos

**General**

- General
- PROFINET interface [X1]
  - General
  - Ethernet addresses**
  - Advanced options
- Identification & Maintenance

Subnet: PN/IE\_1

Add new subnet

**IP protocol**

Use IP protocol

Set IP address in the project

IP address: 192 . 168 . 6 . 212

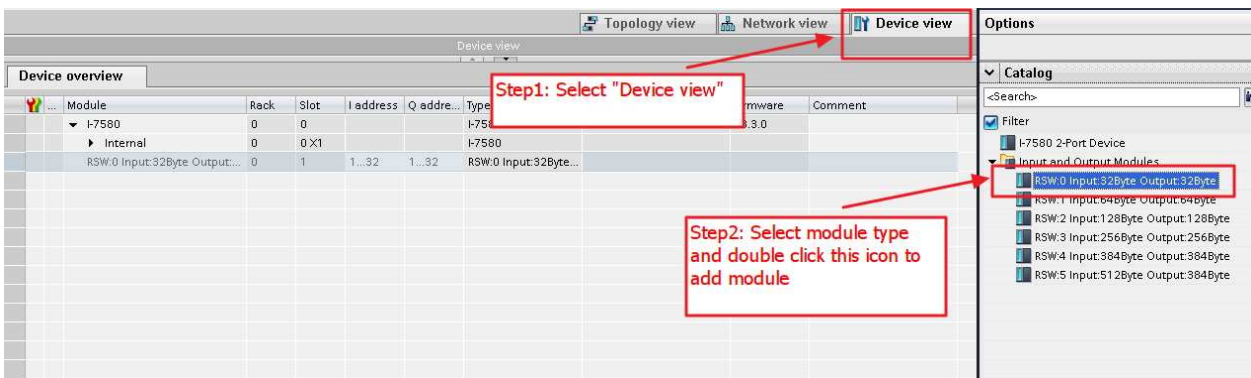
Subnet mask: 255 . 255 . 0 . 0

Use IP router

**Step1: Select "PROFINET interface" -> "Ethernet addresses"**

**Step2: Input IP address**

## ◆ 選擇 I-7580 模組的模組類型



Topology view Network view **Device view** Options

Device overview

| Module                        | Rack | Slot | I address | Q address | Type                  | Firmware | Comment |
|-------------------------------|------|------|-----------|-----------|-----------------------|----------|---------|
| I-7580                        | 0    | 0    |           |           | I-7580                | 3.0      |         |
| Internal                      | 0    | 0 X1 |           |           | I-7580                |          |         |
| RSW.0 Input:32Byte Output:... | 0    | 1    | 1...32    | 1...32    | RSW.0 Input:32Byte... |          |         |

**Step1: Select "Device view"**

**Step2: Select module type and double click this icon to add module**

**Options**

Catalog

<Search>

Filter

I-7580 2-Port Device

Input and Output Modules

- RSW.0 Input:32Byte Output:32Byte**
- RSW.1 Input:64Byte Output:64Byte
- RSW.2 Input:128Byte Output:128Byte
- RSW.3 Input:256Byte Output:256Byte
- RSW.4 Input:384Byte Output:384Byte
- RSW.5 Input:512Byte Output:384Byte

◆ 設定 I-7580 模組的模組參數

**Step1: Click module**

| Module                        | Rack | Slot | I address | Q address | Type                  | Order no. | Firmware | Comment |
|-------------------------------|------|------|-----------|-----------|-----------------------|-----------|----------|---------|
| I-7580                        | 0    | 0    |           |           | I-7580 2-Port Device  | I-7580    | v3.3.0   |         |
| Internal                      | 0    | 0 X1 |           |           | I-7580                |           |          |         |
| RSW:0 Input:32Byte Output:... | 0    | 1    | 1...32    | 1...32    | RSW:0 Input:32Byte... |           |          |         |

**Step2: Click "Module parameters"**

**Step3: Set Module parameters**

**Module parameters - General parameters**

- Baud rate: 115200
- Parity: None
- Data bit: 8 data bit
- Stop bit: 1 stop bit
- End char of input data: None
- Input fixed length data: Disable
- Unit of timeout value: 1 ms
- Diagnosis of time out: None

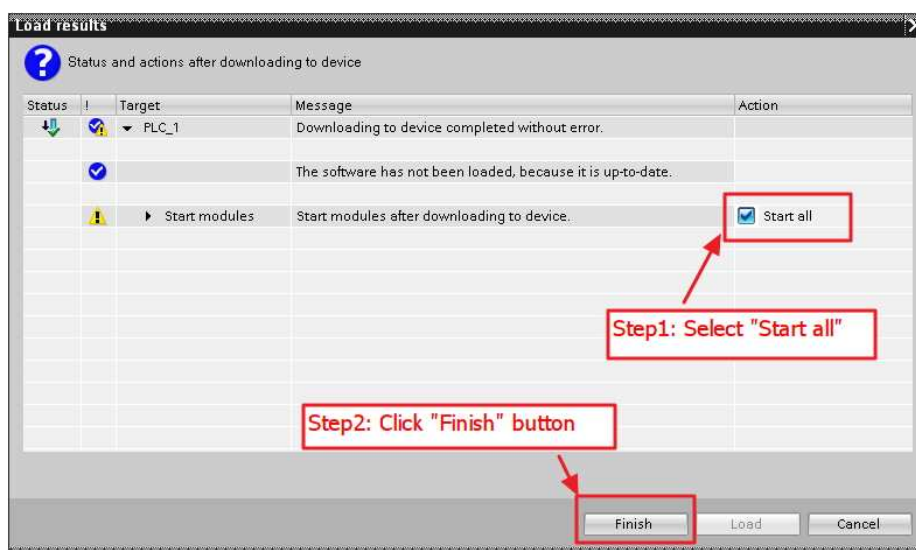
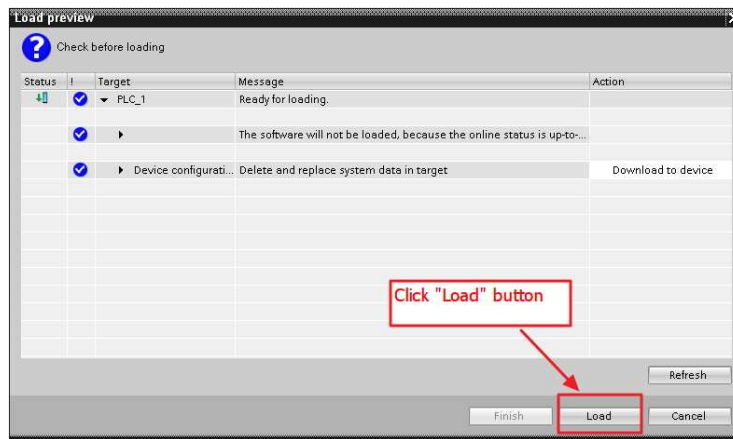
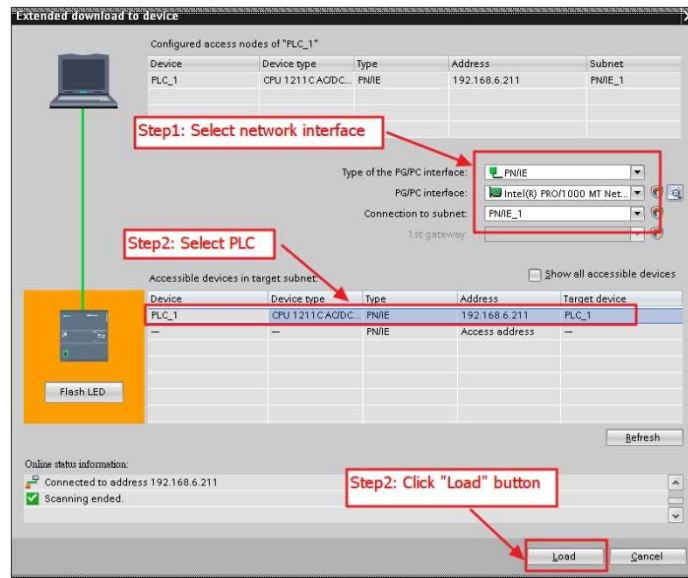
◆ 專案編譯並下載至裝置

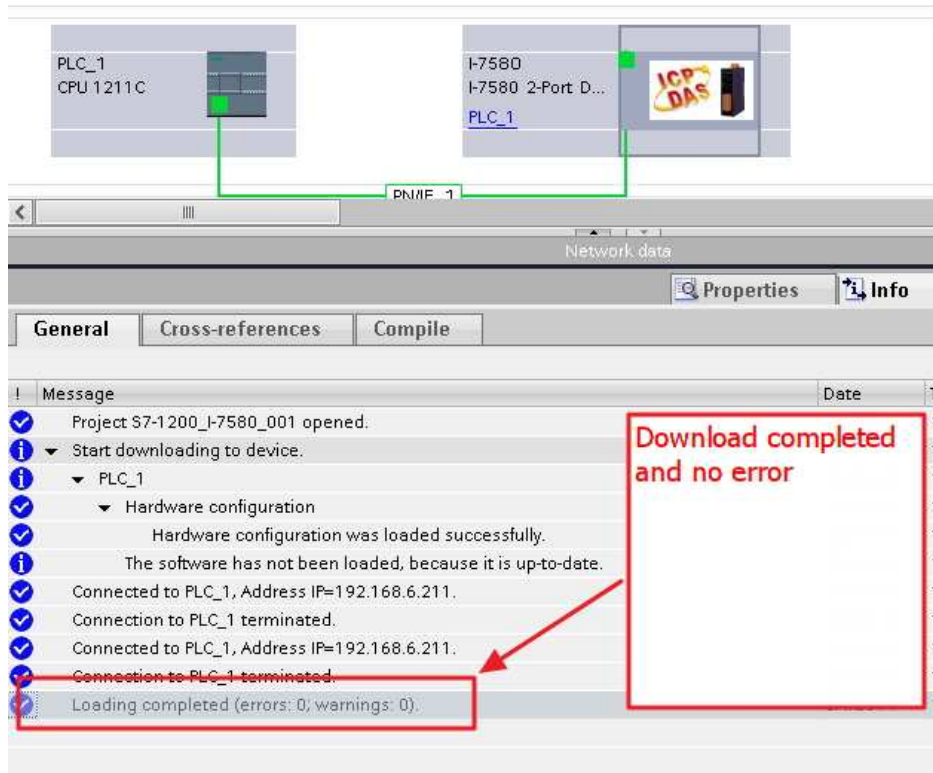
**Step1: Select PLC's icon**

**Step2: Click "Edit" -> "Compile"**

**Step3: Click "Online" -> "Download to device"**







I-7580 模組的 AP LED 指示燈會恆亮，BOOT LED 與 ERR LED 指示燈會恆滅，這表示 PLC 與 I-7580 模組間的通訊連線已經建立。

